



PARTS CATALOGUE

RIGGING-STEERING



1R601-10SEA

()

RIGGING-STEERING
PARTS CATALOGUE

©2017 by Yamaha Motor Co., Ltd.
1st edition, October 2017

All rights reserved.

Any reprinting or unauthorized use
without the written permission of

Yamaha Motor Co., Ltd.

is expressly prohibited.

Printed in Japan.

FOREWORD

This Parts Catalogue is related to the parts for the model(s) on the cover page. When you are ordering replacement parts, please refer to this Parts Catalogue and quote both part numbers and part names correctly.

1. Modifications or additions which have been made after the issue of the Parts Catalogue will be announced in the Parts News.
It is advisable that you make the necessary corrections to the Parts Catalogue according to the Parts News.
2. Abbreviations
The following abbreviations are used in this Parts Catalogue.
“UR” Use specified parts number.
“UN” Use as many as needed.
“AP” Alternate Parts
“LM” Locally Made (Parts need to be ordered locally)
“F#” Frame No. (Applicable machine No.)
“O/S” Over Size
3. The number of components for assembly
 - Parts, which are to be supplied in an assembly, are listed with a dot (.) in front of the part name as shown below.
 - The numeral appearing to the right of each component part indicates the quantity of parts for each assembly unit.

PART NO.	DESCRIPTION	Q'TY	REMARKS
2F5-83310-60	FRONT FLASHER LIGHT ASSY	2	
115-83311-60	.BULB (6V-18W)	1	

4. Applicable colours of graphics are represented in the “REMARKS” as shown below.

PART NO.	DESCRIPTION	Q'TY	REMARKS
2N4-24110-00-X5	FUEL TANK COMP.	2	MXR
3J1-24240-10	.GRAPHIC, FUEL TANK	1	FOR MXR

5. Note that the illustrations for reference in finding parts numbers are not to be used for assembling. When assembling, please use the applicable service manual.

6. The asterisk (*) before a reference number indicates modified items after the first edition.

CONTENTS

BASE HANDLE - ALL.....	1
BASE HANDLE ELECTRICAL 1.....	4
BASE HANDLE ELECTRICAL 2.....	5
TILLER HANDLE KIT 1.....	6
TILLER HANDLE KIT 2.....	9
FITTING KIT 1.....	10
FITTING KIT 2.....	11
STEERING FRICTION 1.....	12
FITTING KIT 3.....	13
STEERING FRICTION 2.....	14
FITTING KIT 4.....	15
STEERING FRICTION 3.....	16
FITTING KIT 5.....	17
FITTING KIT 6.....	18
FITTING KIT 7.....	19
STEERING FRICTION 4.....	20
STEERING FRICTION 5.....	21
STEERING FRICTION 6.....	22
STEERING FRICTION 7.....	23
STEERING FRICTION 8.....	24
STEERING FRICTION 9.....	25
STEERING FRICTION 10.....	26
STEERING FRICTION 11.....	27

INDEX

NUMERICAL INDEX.....	28
----------------------	----

Application Model

PART NO. / PART NAME																	
FIG.NO.																	
FOR US																	
FOR EU & ANZ																	
MODEL CODE	MODEL NAME	SERIAL NO.	6X4-42103-56 TILLER HANDLE KIT	6X4-42103-0B TILLER HANDLE KIT	6X4-42102-C0 FITTING KIT	6X4-42102-11 FITTING KIT	6X4-42102-23 FITTING KIT	6X4-42102-71 FITTING KIT	6X4-42102-E0 FITTING KIT	6X4-42103-66 TILLER HANDLE KIT	6X4-42102-C0 FITTING KIT	6X4-42102-A1 FITTING KIT	6X4-42102-91 FITTING KIT	6X4-42102-81 FITTING KIT	6X4-42102-B1 FITTING KIT	6X4-42102-F0 FITTING KIT	6X4-42102-G0 FITTING KIT
			FIG.1, 2	FIG.4, 5, 17	FIG.6, 8	FIG.7, 8	FIG.9, 10	FIG.11, 12	FIG.14, 23	FIG.1, 3	FIG.6, 8	FIG.7, 8	FIG.9, 10	FIG.11, 12	FIG.13, 8	FIG.14, 23	FIG.15, 8
6BPA	F25A-2017 F25B-2017	6BPK-1039270-		*													
6EK4	F115B F115B-2017	6EK-1040464-	*		*					*	*						
6FN3	F115C VF115A-2017	6FN-1005411-	*		*					*	*						
6EM3	F130A F130A-2017	6EM-1003203-	*		*					*	*						
6D6E	F75B F75A-2017	62P-1015767-	*			*				*		*					
6D8E	F90A-2017	61P-1089115-	*			*				*		*					
6C1E	F50H F50B-2017	6C1-1070858-	*				*			*			*				
6C5E	F60F F60B-2017	6C5-1076993-	*					*		*			*				
6C2E	FT50J T50B-2017	6C2-1024295-	*					*		*			*				
6C6E	FT60G T60B-2017	6C6-1029232-	*					*		*			*				
6CJ8	F70A F70A-2017	6CJ-1065670-	*					*		*			*				
6BTA	F30B F30A-2017	6BT-1014966-	*						*	*				*			
6BGA	F40F F40A-2017	6BG-1061339-	*						*	*				*			
6D7E	F80B F80A-2017	6D7-1019284-								*		*					
6D9E	F100D F100A-2017	6D9-1028870-								*		*					
68VH	F115A	68V-1170172-								*					*		
6GX1	F20F	6GXX-1000001-								*						*	
6FM1	F25G F25C-2017	6FMK-1000001-	*						*	*						*	
6HW1	F75B-2017	6HW-1000001-								*							*
6HV1	F80D	6HV-1000001-								*							*
6FP1	F90B-2017	6FP-1000001-								*							*
6HJ1	F100F	6HJ-1000001-								*							*

6X4 TILLER HANDLE KIT (F20F-F130A)

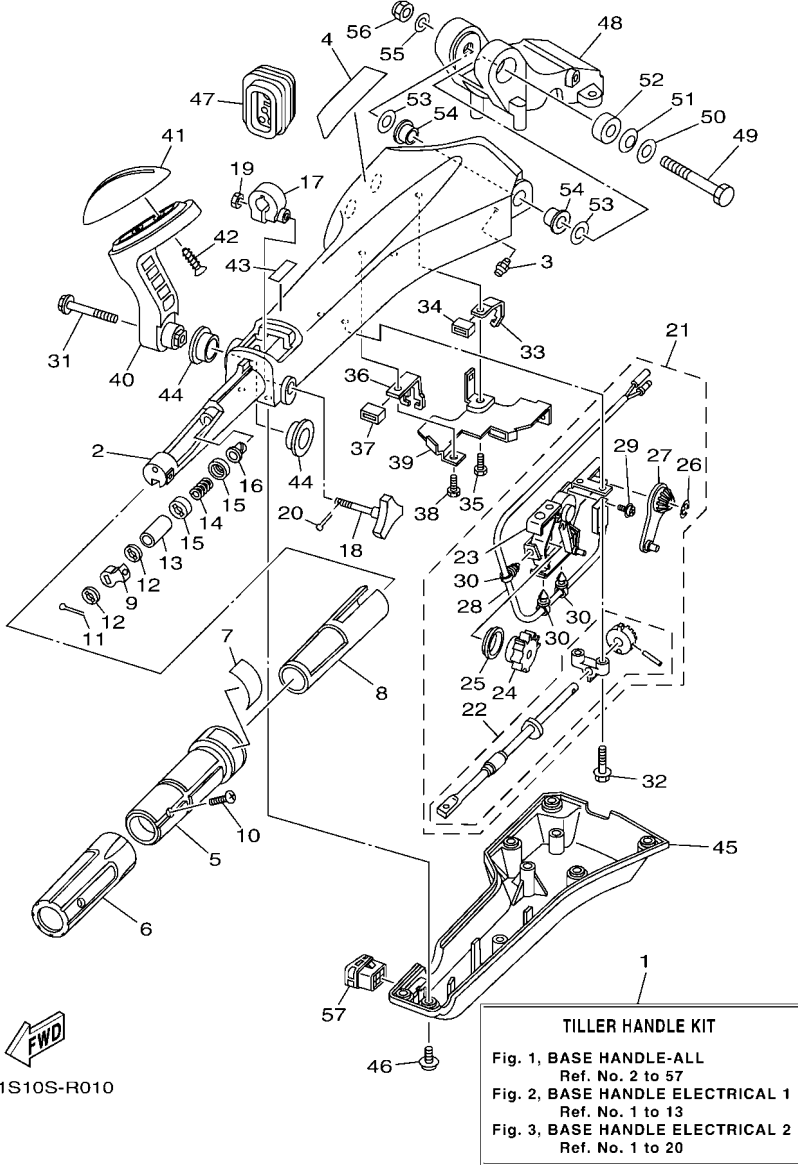
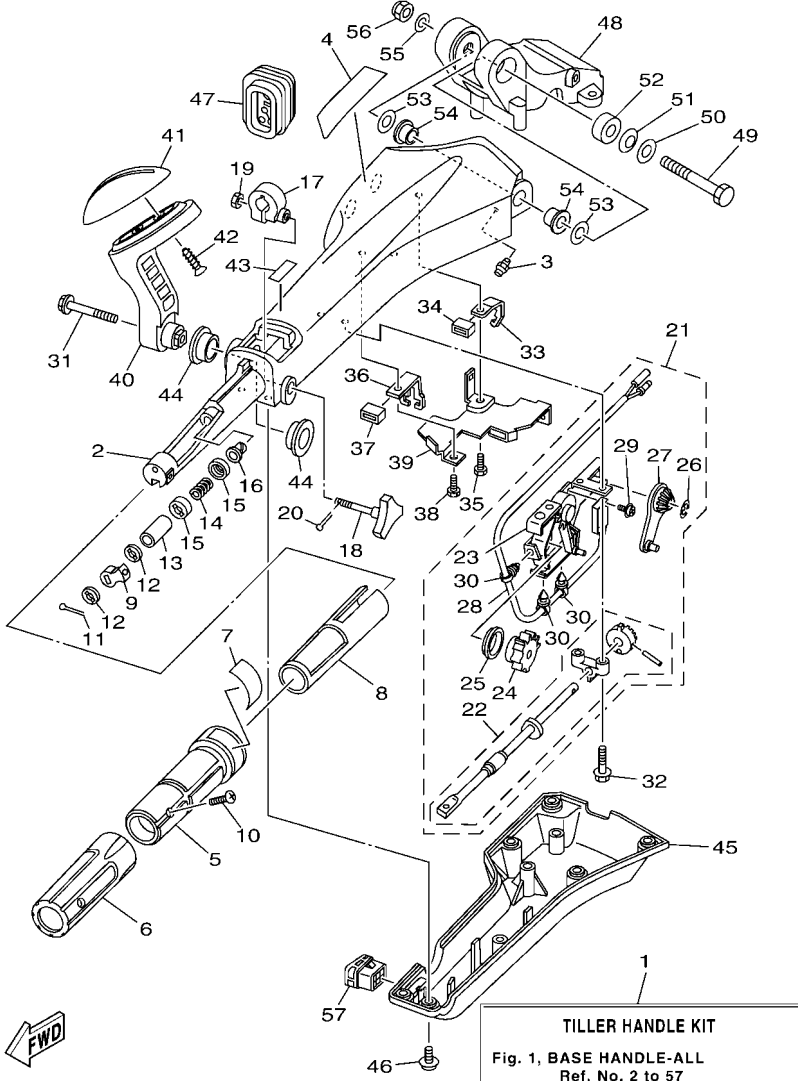


FIG. 1 BASE HANDLE - ALL

REF. NO.	PART NO.	DESCRIPTION	601S				REMARKS
1	6X4-42103-56	TILLER HANDLE KIT	1				LM FOR US
	6X4-42103-66	TILLER HANDLE KIT	1				LM FOR EU & ANZ
2	6X4-42111-02-8D	HANDLE, STEERING	1				
3	93700-06M03	NIPPLE, GREASE	1				
4	6X4-48215-00	GRAPHIC	1				
5	6X4-42119-01	GRIP, STEERING HANDLE	1				
6	6X4-42177-00	RUBBER, HANDLE	1				
7	6X4-42137-00	INDICATOR, THROTTLE	1				
8	6X4-41291-00	BUSHING	1				
9	6X4-44139-01	COLLAR	1				
10	90152-05007	SCREW, COUNTERSUNK	1				
11	91490-20010	PIN. COTTER	1				
12	6X4-44177-00	WASHER	2				
13	6X4-42128-00	COLLAR, DISTANCE 1	1				
14	90501-23215	SPRING, COMPRESSION	1				
15	6X4-44188-00	WASHER	2				
16	90386-08032	BUSH	1				
17	63D-42126-00	FRICTION, STEERING HANDLE GRIP	1				
18	6X4-48154-00	KNOB, THROTTLE	1				
19	95380-06600	NUT, HEXAGON	1				
20	91490-20010	PIN. COTTER	1				
21	6X4-44100-01	SHIFT LINK ASSY	1				
22	6X4-42115-00	.SHAFT, STEERING HANDLE	1				
23	6X4-44102-00	.SHIFT ASSIST ASSY.	1				
24	6X4-47731-01	.GEAR, DRIVE	1				
25	6X4-44132-00	.BUSHING	1				
26	6X4-14137-00	.CLIP	1				

6X4 TILLER HANDLE KIT (F20F-F130A)

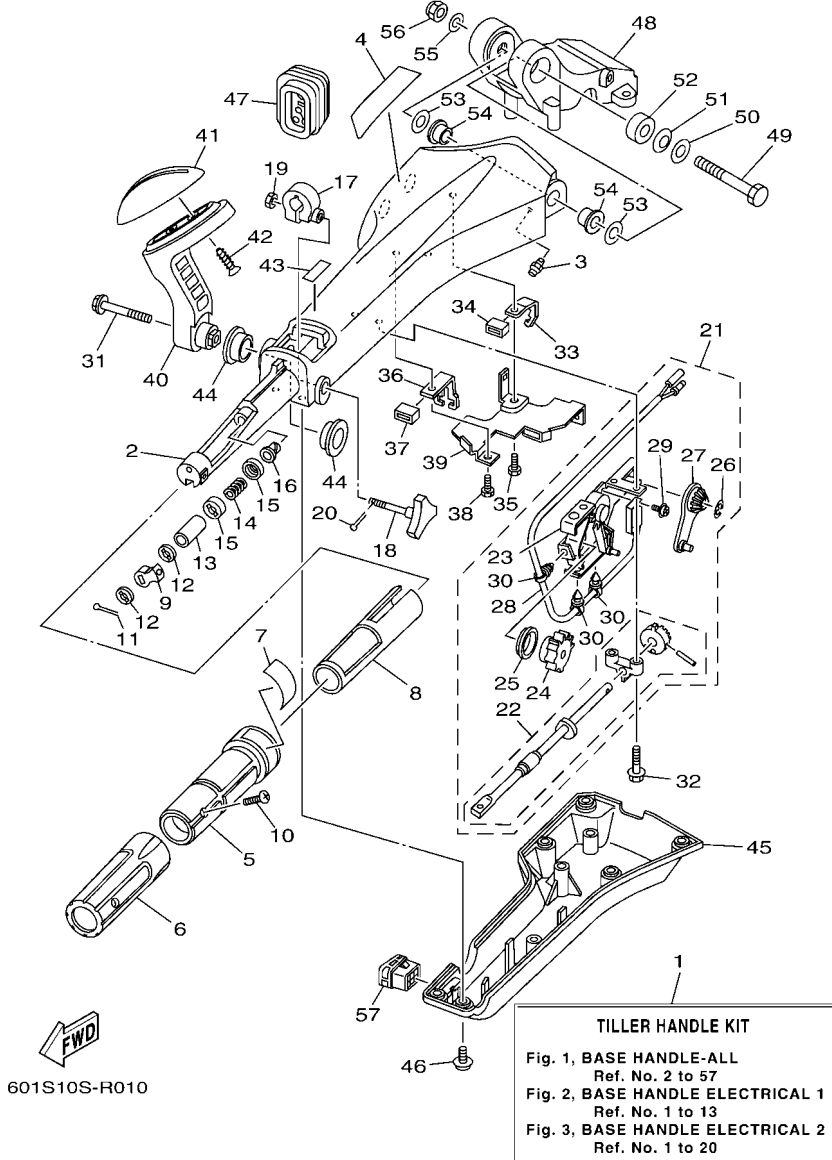


601S10S-R010

FIG. 1 BASE HANDLE - ALL

REF. NO.	PART NO.	DESCRIPTION	QTY	REMARKS
27	6X4-48261-00	.ARM, THROTTLE	1	
28	6X4-82540-00	.NEUTRAL SWITCH ASSY	1	
29	703-48129-00	.SCREW 3	2	
30	6X4-42821-00	.BAND, CLAMP	3	
31	97595-08540	BOLT, WITH WASHER	1	
32	97595-06530	BOLT, WITH WASHER	2	
33	6X4-48538-00	CLAMP, CABLE 1	1	
34	6X4-26367-00	PROTECTOR	1	
35	97095-06014	BOLT	1	
36	6X4-48538-10	CLAMP, CABLE 1	1	
37	6X4-26367-00	PROTECTOR	1	
38	97095-06014	BOLT	1	
39	6X4-42159-00	STAY	1	
40	6X4-44159-00-8D	HANDLE, GEAR SHIFT	1	
41	6X4-44173-00	LEVER, SHIFT CONTROL	1	
42	97780-60920	SCREW, TAPPING	2	
43	6G8-44191-00	INDICATOR, SHIFT	1	
44	90386-26MA3	BUSH	2	
45	6X4-42131-01	COVER, HANDLE STEERING	1	FOR US
	6X4-42131-11	COVER, HANDLE STEERING	1	FOR EU & ANZ
46	97985-06216	SCREW, WITH WASHER	6	
47	6X4-42725-01	GROMMET	1	
48	63D-42121-22-8D	BRACKET	1	
49	90101-12014	BOLT	1	
50	92990-12200	WASHER, PLAIN	1	
51	90206-12M22	WASHER, WAVE	1	
52	90387-12M02	COLLAR	1	

6X4 TILLER HANDLE KIT (F20F-F130A)



601S10S-R010

FIG. 1 BASE HANDLE - ALL

REF. NO.	PART NO.	DESCRIPTION	601S					REMARKS
53	90201-12035	WASHER, PLATE	2					
54	90386-12003	BUSH	2					
55	92990-12600	WASHER, PLATE	1					
56	90185-12M12	NUT, SELF-LOCKING	1					
57	6X4-42728-10	CAP	1					

6X4 TILLER HANDLE KIT (F25C-F130A FOR US)

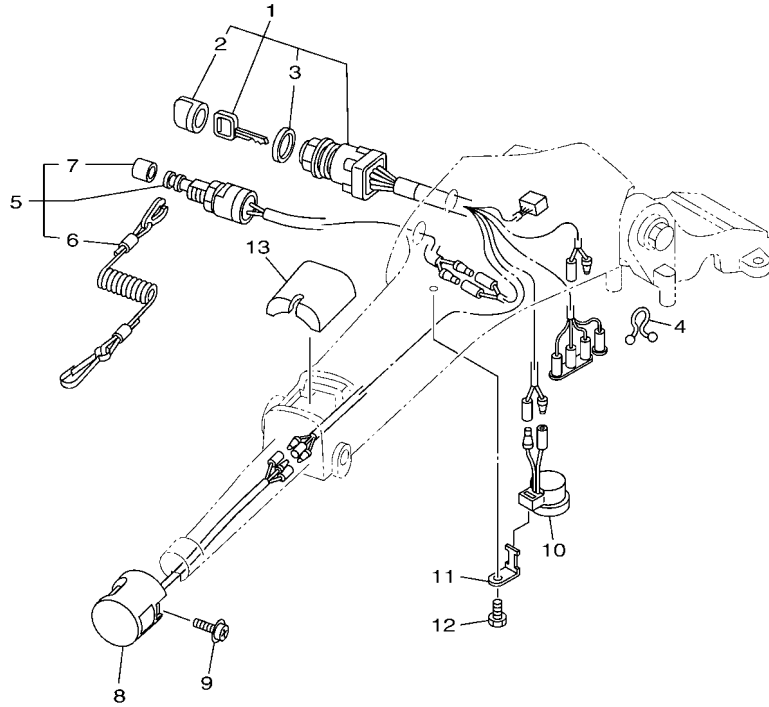


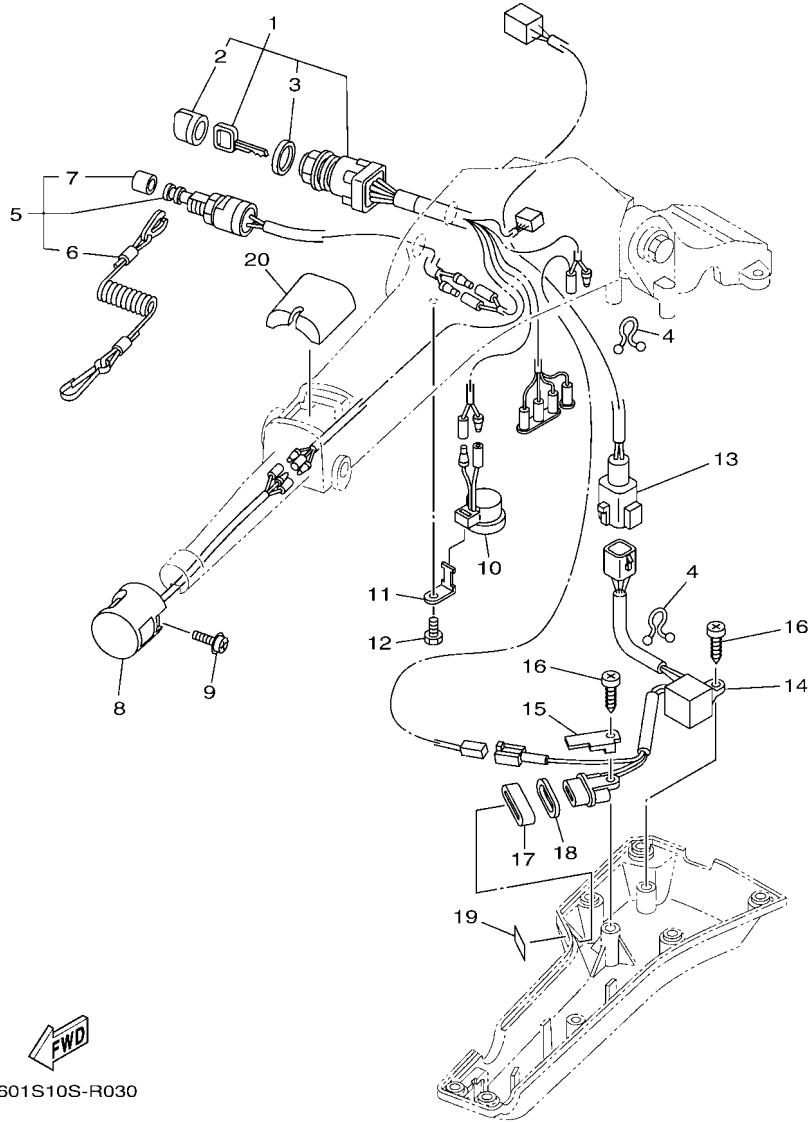
FIG. 2 BASE HANDLE ELECTRICAL 1

REF. NO.	PART NO.	DESCRIPTION	601S				REMARKS
1	6X4-82510-01	MAIN SWITCH ASSY	1				
2	676-82577-01	.CAP, KEY	1				
3	703-82532-00	.CAP	1				
4	90464-08M07	CLAMP	1				
5	69W-82575-00	ENGINE STOP SWITCH ASSY	1				
6	682-82556-00	.LANYARD, STOP SWITCH	1				
7	689-8257Y-00	.CAP	1				
8	6X4-82563-01	TRIM & TILT SWITCH ASSY	1				
9	97980-06216	SCREW, WITH WASHER	1				
10	6X4-83383-00	BUZZER	1				
11	6X4-83386-00	STAY, BUZZER	1				
12	97095-06014	BOLT	1				
13	6X4-81942-01	COVER	1				



601S10S-R020

6X4 TILLER HANDLE KIT (F20F-F130A FOR EU&ANZ)



601S10S-R030

FIG. 3 BASE HANDLE ELECTRICAL 2

REF. NO.	PART NO.	DESCRIPTION	601S				REMARKS
1	6X4-82510-41	MAIN SWITCH ASSY	1				
2	676-82577-01	.CAP, KEY	1				
3	703-82532-00	.CAP	1				
4	90464-08M07	CLAMP	2				
5	69W-82575-00	ENGINE STOP SWITCH ASSY	1				
6	682-82556-00	.LANYARD, STOP SWITCH	1				
7	689-8257Y-00	.CAP	1				
8	6X4-82563-01	TRIM & TILT SWITCH ASSY	1				
9	97980-06216	SCREW, WITH WASHER	1				
10	6X4-83383-00	BUZZER	1				
11	6X4-83386-00	STAY, BUZZER	1				
12	97095-06014	BOLT	1				
13	6X4-83653-20	WIRE, LEAD (L:700MM)	1				
14	6C5-84301-00	PILOT LIGHT ASSY 1	1				
15	6X4-44114-00	STOPPER	1				
16	97780-60620	SCREW, TAPPING	2				
17	6X4-42727-00	GROMMET	1				
18	6H4-83589-00	GASKET	1				
19	6X4-85415-00	MARK, SIGNAL LAMP	1				
20	6X4-81942-01	COVER	1				

6X4 TILLER HANDLE KIT (F25A,F25B)

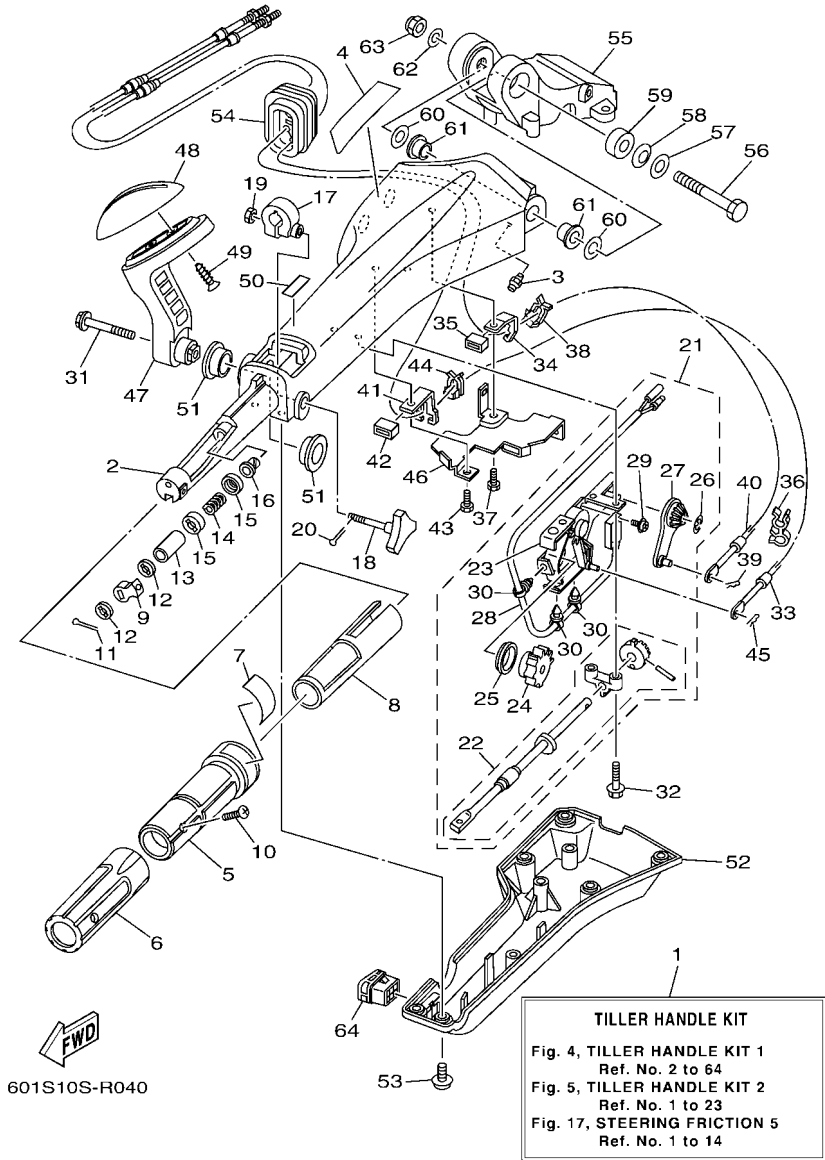


FIG. 4 TILLER HANDLE KIT 1

REF. NO.	PART NO.	DESCRIPTION	QTY	REMARKS
1	6X4-42103-0B	TILLER HANDLE KIT	1	LM
2	6X4-42111-02-4D	HANDLE, STEERING	1	
3	93700-06M03	NIPPLE, GREASE	1	
4	6X4-48215-00	GRAPHIC	1	
5	6X4-42119-01	GRIP, STEERING HANDLE	1	
6	6X4-42177-00	RUBBER, HANDLE	1	
7	6X4-42137-00	INDICATOR, THROTTLE	1	
8	6X4-41291-00	BUSHING	1	
9	6X4-44139-01	COLLAR	1	
10	90152-05007	SCREW, COUNTERSUNK	1	
11	91490-20010	PIN, COTTER	1	
12	6X4-44177-00	WASHER	2	
13	6X4-42128-00	COLLAR, DISTANCE 1	1	
14	90501-23215	SPRING, COMPRESSION	1	
15	6X4-44188-00	WASHER	2	
16	90386-08032	BUSH	1	
17	63D-42126-00	FRICTION, STEERING HANDLE GRIP	1	
18	6X4-48154-00	KNOB, THROTTLE	1	
19	95380-06600	NUT, HEXAGON	1	
20	91490-20010	PIN, COTTER	1	
21	6X4-44100-01	SHIFT LINK ASSY	1	
22	6X4-42115-00	.SHAFT, STEERING HANDLE	1	
23	6X4-44102-00	.SHIFT ASSIST ASSY.	1	
24	6X4-47731-01	.GEAR, DRIVE	1	
25	6X4-44132-00	.BUSHING	1	
26	6X4-14137-00	.CLIP	1	
27	6X4-48261-00	.ARM, THROTTLE	1	

6X4 TILLER HANDLE KIT (F25A,F25B)

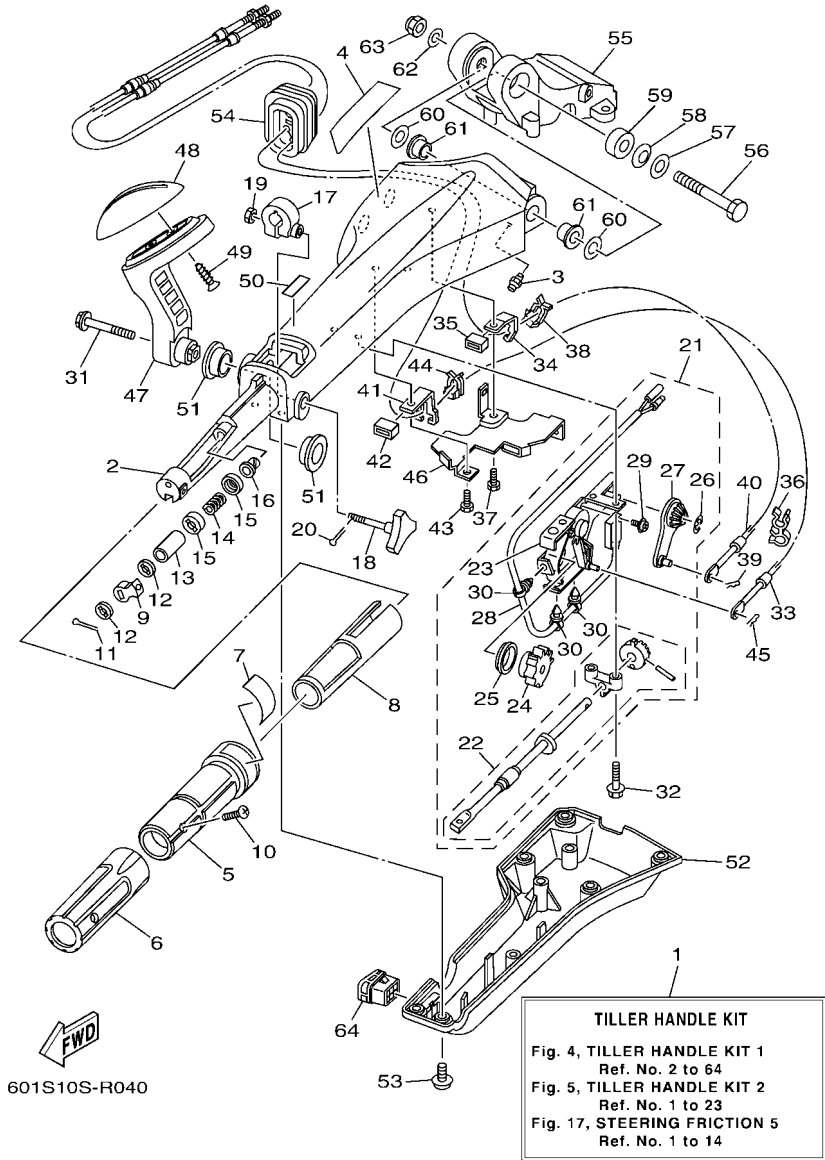
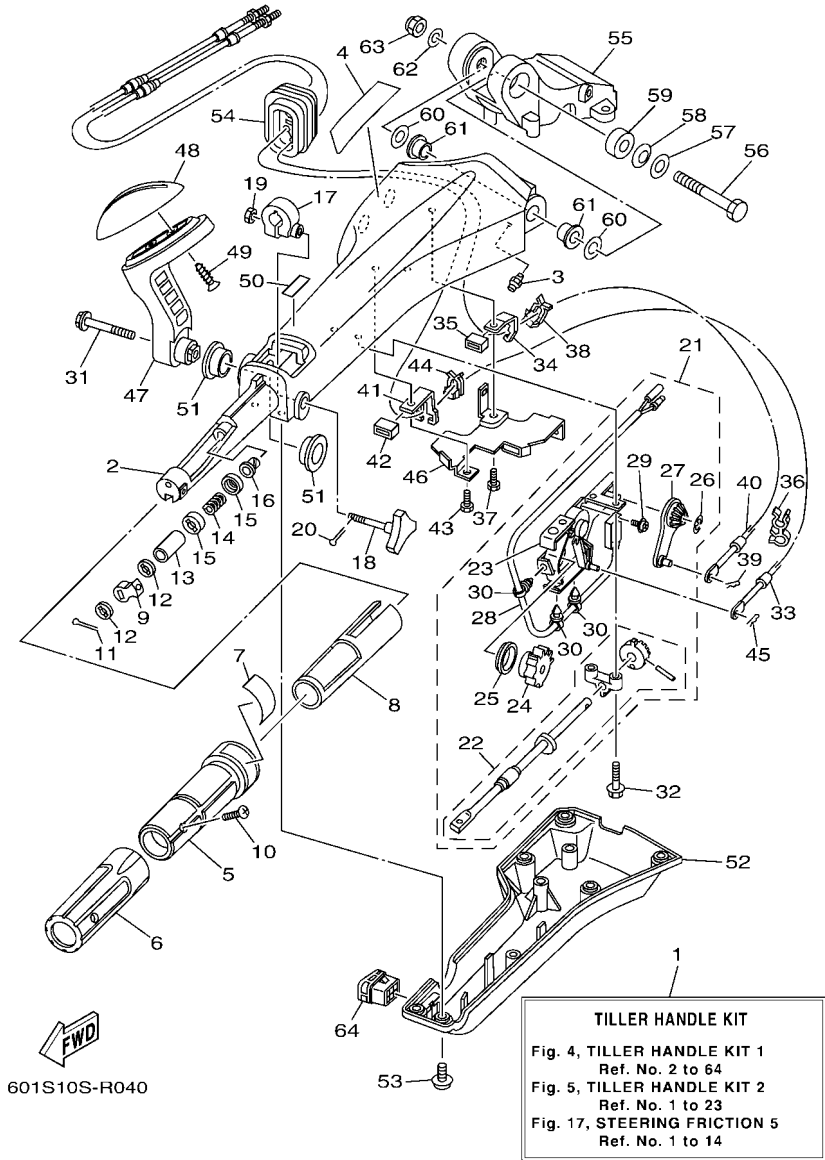


FIG. 4 TILLER HANDLE KIT 1

REF. NO.	PART NO.	DESCRIPTION	QTY	REMARKS
28	6X4-82540-00	.NEUTRAL SWITCH ASSY	1	
29	703-48129-00	.SCREW 3	2	
30	6X4-42821-00	.BAND, CLAMP	3	
31	97595-08540	BOLT, WITH WASHER	1	
32	97595-06530	BOLT, WITH WASHER	2	
33	6H1-48321-21	CABLE	1	
34	6X4-48538-00	CLAMP, CABLE 1	1	
35	6X4-26367-00	PROTECTOR	1	
36	90464-09M42	CLAMP	1	
37	97095-06014	BOLT	1	
38	63D-48538-00	CLAMP, CABLE 1	1	
39	90468-10005	CLIP	1	
40	6H3-48321-02	CABLE	1	
41	6X4-48538-10	CLAMP, CABLE 1	1	
42	6X4-26367-00	PROTECTOR	1	
43	97095-06014	BOLT	1	
44	63D-48538-00	CLAMP, CABLE 1	1	
45	90468-10005	CLIP	1	
46	6X4-42159-00	STAY	1	
47	6X4-44159-00-4D	HANDLE, GEAR SHIFT	1	
48	6X4-44173-00	LEVER, SHIFT CONTROL	1	
49	97780-60920	SCREW, TAPPING	2	
50	6G8-44191-00	INDICATOR, SHIFT	1	
51	90386-26MA3	BUSH	2	
52	6X4-42131-01	COVER, HANDLE STEERING	1	
53	97985-06216	SCREW, WITH WASHER	6	
54	6X4-42725-01	GROMMET	1	

6X4 TILLER HANDLE KIT (F25A,F25B)

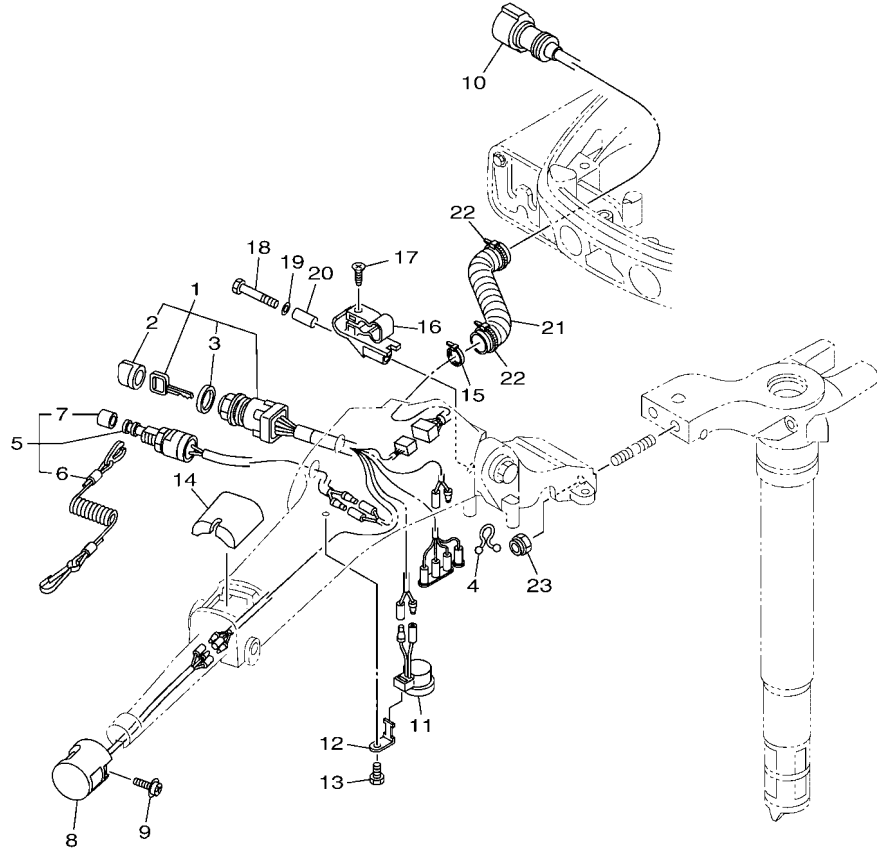


601S10S-R040

FIG. 4 TILLER HANDLE KIT 1

REF. NO.	PART NO.	DESCRIPTION	601S				REMARKS
55	65W-42121-11-4D	BRACKET	1				
56	90101-12014	BOLT	1				
57	92990-12200	WASHER, PLAIN	1				
58	90206-12M22	WASHER, WAVE	1				
59	90387-12M02	COLLAR	1				
60	90201-12035	WASHER, PLATE	2				
61	90386-12003	BUSH	2				
62	92990-12600	WASHER, PLATE	1				
63	90185-12M12	NUT, SELF-LOCKING	1				
64	6X4-42728-10	CAP	1				

6X4 TILLER HANDLE KIT (F25A,F25B)

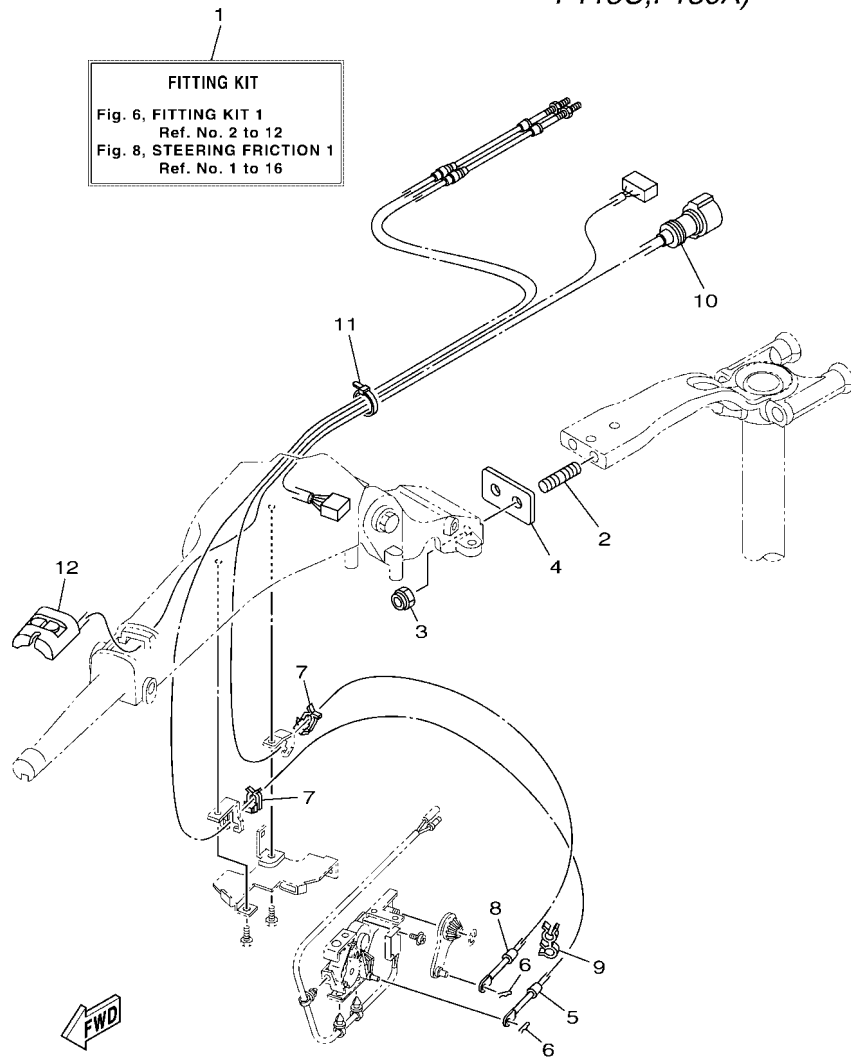



601S10S-Q050

FIG. 5 TILLER HANDLE KIT 2

REF. NO.	PART NO.	DESCRIPTION	601S				REMARKS
1	6X4-82510-01	MAIN SWITCH ASSY	1				
2	676-82577-01	.CAP, KEY	1				
3	703-82532-00	.CAP	1				
4	90464-08M07	CLAMP	1				
5	69W-82575-00	ENGINE STOP SWITCH ASSY	1				
6	682-82556-00	.LANYARD, STOP SWITCH	1				
7	689-8257Y-00	.CAP	1				
8	6X4-82563-01	TRIM & TILT SWITCH ASSY	1				
9	97980-06216	SCREW, WITH WASHER	1				
10	6X4-82586-10	EXT., WIRE HARNESS (L:950MM)	1				
11	6X4-83383-00	BUZZER	1				
12	6X4-83386-00	STAY, BUZZER	1				
13	97095-06014	BOLT	1				
14	6X4-81942-01	COVER	1				
15	90465-13M36	CLAMP	1				
16	62Y-82361-00	CLAMP, CORD	1				
17	90161-06M03	SCREW, TAPPING	1				
18	97095-06035	BOLT	1				
19	92995-06600	WASHER	1				
20	90387-06M26	COLLAR	1				
21	90447-22006	TUBE	1				
22	90465-13M24	CLAMP	2				
23	90185-10027	NUT, SELF-LOCKING	2				

6X4 TILLER HANDLE FITTING KIT (F115B,VF115A,
F115C,F130A)



601S10S-R060

FIG. 6 FITTING KIT 1

REF. NO.	PART NO.	DESCRIPTION	601S				REMARKS
1	6X4-42102-C0	FITTING KIT	1				LM
2	90116-10063	BOLT, STUD	2				
3	90185-10027	NUT, SELF-LOCKING	2				
4	6EK-42121-00	BRACKET	1				
5	6EK-48321-00	CABLE	1				
6	90468-10005	CLIP	2				
7	63D-48538-00	CLAMP, CABLE 1	2				
8	6EK-26301-00	THROTTLE CABLE ASSY	1				
9	90464-09M42	CLAMP	1				
10	6X4-82586-10	EXT., WIRE HARNESS (L:950MM)	1				
11	90465-13M24	CLAMP	1				
12	6X4-81860-00	SWITCH ASSY	1				

6X4 TILLER HANDLE FITTING KIT (F75A,F75B,F80D,
F90A,F100D)

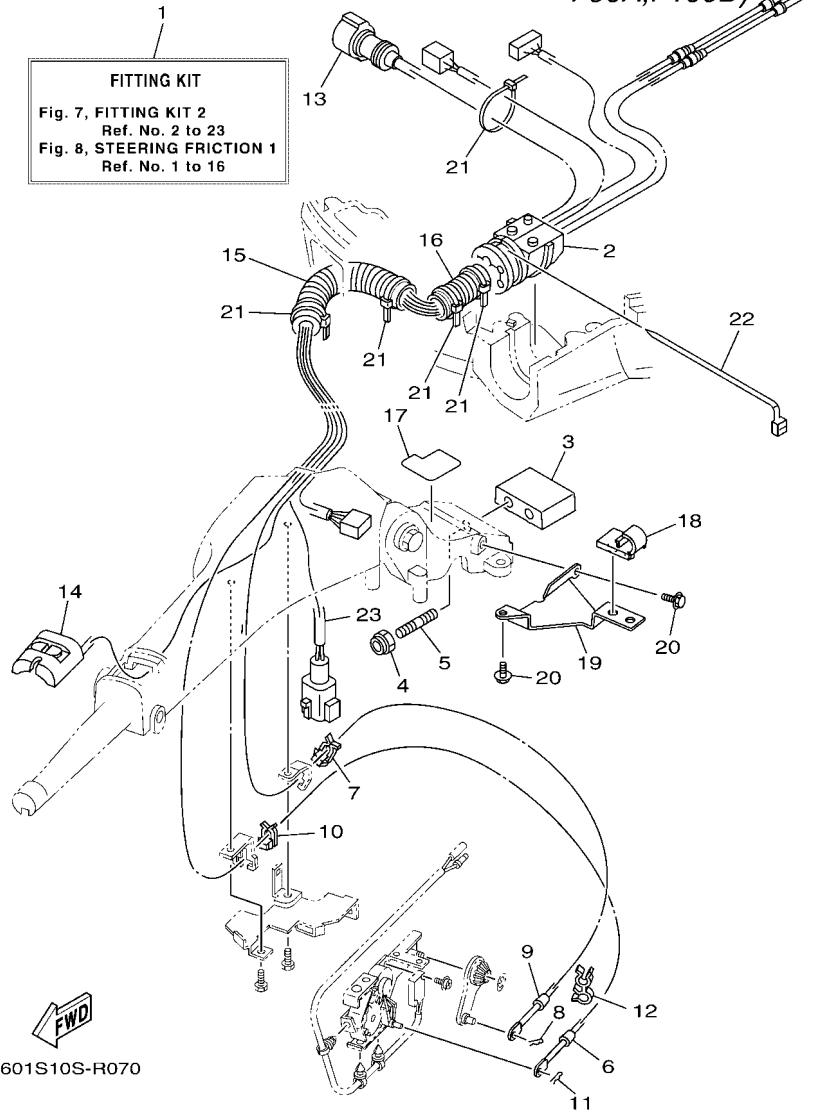
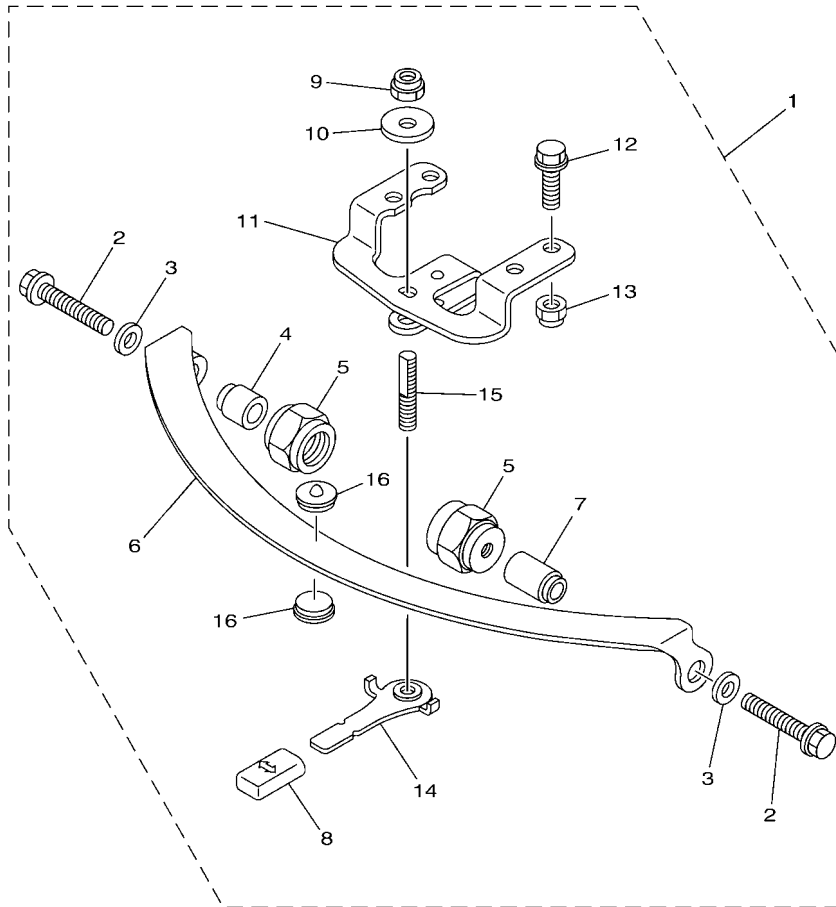


FIG. 7 FITTING KIT 2

REF. NO.	PART NO.	DESCRIPTION	601S				REMARKS
1	6X4-42102-11	FITTING KIT	1				LM FOR US
	6X4-42102-A1	FITTING KIT	1				LM FOR EU & ANZ
2	68V-42725-10	GROMMET	1				
3	6X4-42121-00-8D	BRACKET	1				
4	90185-10027	NUT, SELF-LOCKING	2				
5	90116-10031	BOLT, STUD	2				
6	67G-48321-20	CABLE	1				
7	63D-48538-00	CLAMP, CABLE 1	1				
8	90468-10005	CLIP	1				
9	67G-26301-10	THROTTLE CABLE ASSY	1				
10	63D-48538-00	CLAMP, CABLE 1	1				
11	90468-10005	CLIP	1				
12	90464-09M42	CLAMP	1				
13	6X4-82586-20	EXT., WIRE HARNESS (L:1.25M)	1				
14	6X4-81860-00	SWITCH ASSY	1				
15	90447-22007	TUBE	1				
16	6K3-83557-00	TUBE	1				
17	6X4-42735-00	PROTECTOR	1				
18	63D-24367-00	CLAMP, FUEL PIPE 2	1				
19	6X4-24364-00	STAY	1				
20	97595-06516	BOLT, WITH WASHER	2				
21	90465-13M24	CLAMP	5				
22	90465-13M30	CLAMP	1				
23	6X4-83653-00	WIRE, LEAD (L:1250MM)	1				FOR EU & ANZ

**6X4 TILLER HANDLE FITTING KIT
STEERING FRICTION (F75A,F75B,F80D,F90A,F90B,F100F,
F115A,F115B,VF115A,F130A)**

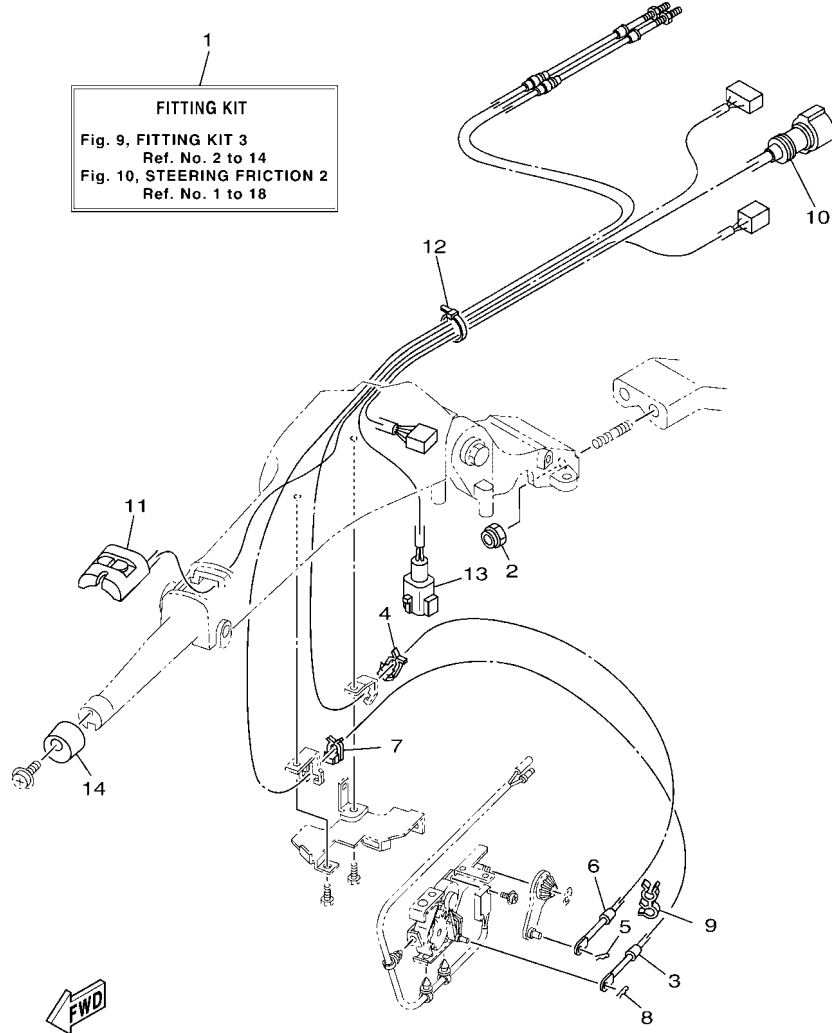



601S10S-R080

FIG. 8 STEERING FRICTION 1

REF. NO.	PART NO.	DESCRIPTION	601S				REMARKS
1	67G-42508-10	STEERING FRICTION ASSY	1				
2	90119-08M74	.BOLT, WITH WASHER	2				
3	90201-08M01	.WASHER, PLATE	2				
4	67G-42541-00	.PIPE 1	1				
5	67G-42546-00	.NUT	2				
6	63D-42527-00	.PLATE, FRICTION	1				
7	67G-42541-10	.PIPE 1	1				
8	682-43318-01	.COVER	1				
9	90185-10M14	.NUT, SELF-LOCKING	1				
10	90201-10M76	.WASHER, PLATE	1				
11	6X4-42526-00	.PLATE, FRICTION	1				
12	97595-08025	.BOLT, WITH WASHER	2				
13	90185-08057	.NUT, SELF-LOCKING	2				
14	67G-42561-00	.KNOB, STEERING LOCK	1				
15	67G-42562-00	.SHAFT, STEERING LOCK	1				
16	63D-42528-00	.PLATE, FRICTION	2				

6X4 TILLER HANDLE FITTING KIT
 (F50B,F50H,T50B,FT50J,F60B,F60F,T60B,FT60G,F70A)

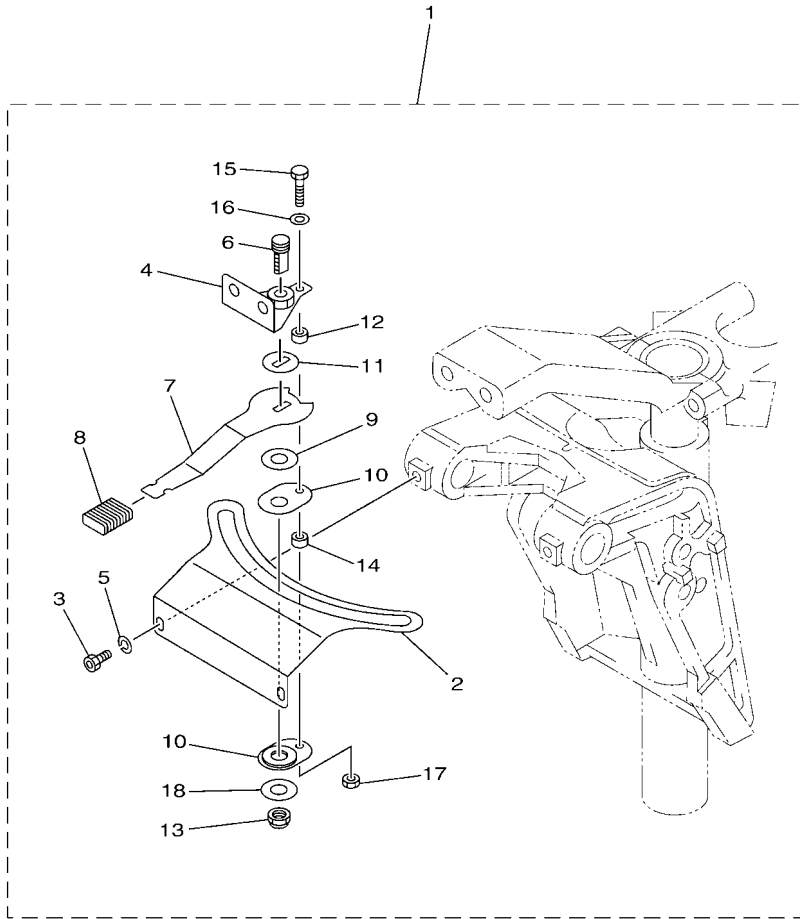


601S10S-Q090

FIG. 9 FITTING KIT 3

REF. NO.	PART NO.	DESCRIPTION	601S				REMARKS
1	6X4-42102-23	FITTING KIT	1				LM FOR US
	6X4-42102-91	FITTING KIT	1				LM FOR EU & ANZ
2	90185-10027	NUT, SELF-LOCKING	2				
3	67C-48321-11	CABLE	1				
4	63D-48538-00	CLAMP, CABLE 1	1				
5	90468-10005	CLIP	1				
6	69W-26301-00	THROTTLE CABLE ASSY	1				
7	63D-48538-00	CLAMP, CABLE 1	1				
8	90468-10005	CLIP	1				
9	90464-09M42	CLAMP	1				
10	6X4-82586-10	EXT., WIRE HARNESS (L:950MM)	1				
11	6X4-81860-00	SWITCH ASSY	1				
12	90465-13M36	CLAMP	1				
13	6X4-83653-20	WIRE, LEAD (L:700MM)	1				FOR EU & ANZ
14	6X4-42728-00	CAP	1				FOR EU & ANZ

6X4 TILLER HANDLE FITTING KIT
 STEERING FRICTION (F50B,F50H,T50B,FT50J,
 F60B,F60F,T60B,FT60G,F70A)



601S10S-Q100

FIG. 10 STEERING FRICTION 2

REF. NO.	PART NO.	DESCRIPTION	601S				REMARKS
1	6C5-42508-01	STEERING FRICTION ASSY	1				
2	6C5-42527-00	.PLATE, FRICTION	1				
3	90109-06M88	.BOLT	2				
4	67C-42525-00	.PLATE, FRICTION	1				
5	92990-06100	.WASHER, SPRING	2				
6	67C-42562-00	.SHAFT, STEERING LOCK	1				
7	67C-42561-00	.KNOB, STEERING LOCK	1				
8	689-43633-00	.COVER, TILT LEVER	1				
9	90202-10M56	.WASHER, PLATE	1				
10	65W-42528-00	.PLATE, FRICTION	2				
11	90209-10M26	.WASHER	1				
12	90387-05053	.COLLAR	1				
13	90185-10M14	.NUT, SELF-LOCKING	1				
14	90387-05054	.COLLAR	1				
15	97095-05020	.BOLT	1				
16	92995-05600	.WASHER	1				
17	95380-05600	.NUT	1				
18	90201-106M5	.WASHER, PLATE	1				

**6X4 TILLER HANDLE FITTING KIT
(F30A, F30B, F40A, F40F)**

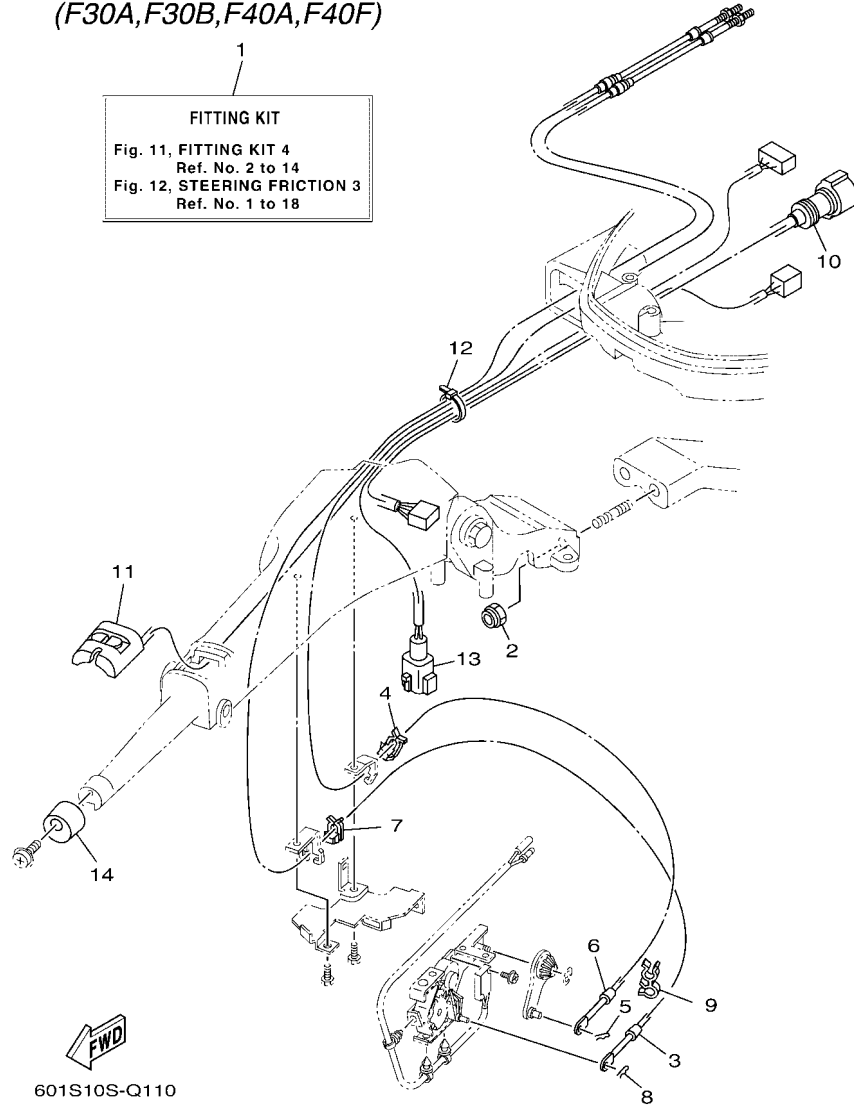
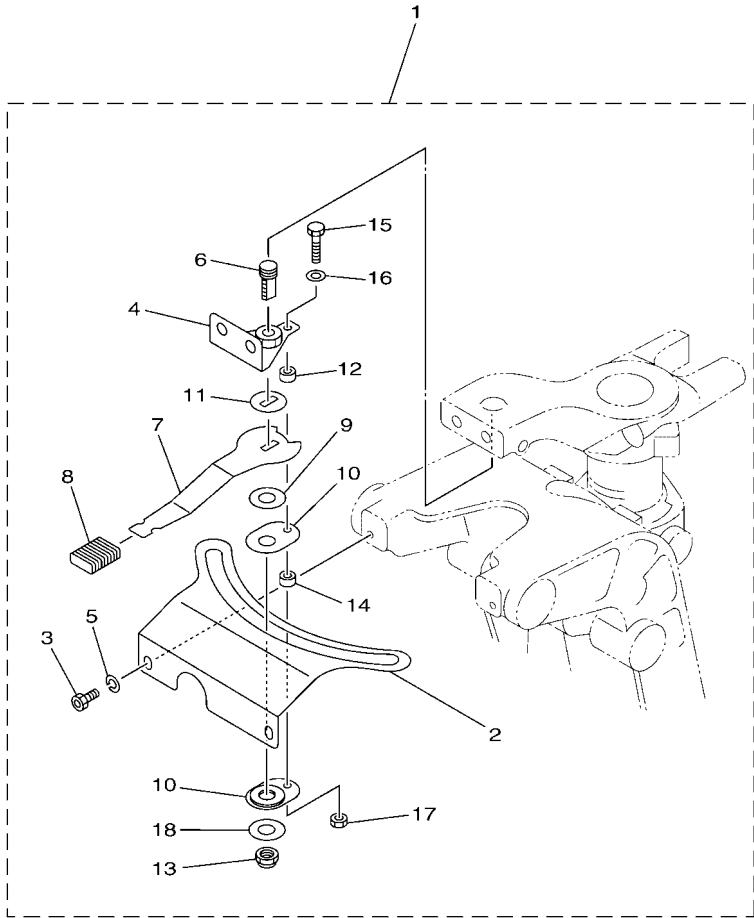


FIG. 11 FITTING KIT 4

REF. NO.	PART NO.	DESCRIPTION	601S	REMARKS
1	6X4-42102-71	FITTING KIT	1	LM FOR US
	6X4-42102-81	FITTING KIT	1	LM FOR EU & ANZ
2	90185-10027	NUT, SELF-LOCKING	2	
3	67C-48321-11	CABLE	1	
4	63D-48538-00	CLAMP, CABLE 1	1	
5	90468-10005	CLIP	1	
6	69W-26301-00	THROTTLE CABLE ASSY	1	
7	63D-48538-00	CLAMP, CABLE 1	1	
8	90468-10005	CLIP	1	
9	90464-09M42	CLAMP	1	
10	6X4-82586-10	EXT., WIRE HARNESS (L:950MM)	1	
11	6X4-81860-00	SWITCH ASSY	1	
12	90465-13M36	CLAMP	1	
13	6X4-83653-20	WIRE, LEAD (L:700MM)	1	FOR EU & ANZ
14	6X4-42728-00	CAP	1	FOR EU & ANZ

6X4 TILLER HANDLE FITTING KIT
STEERING FRICTION (F30A,F30B,F40A,F40F)

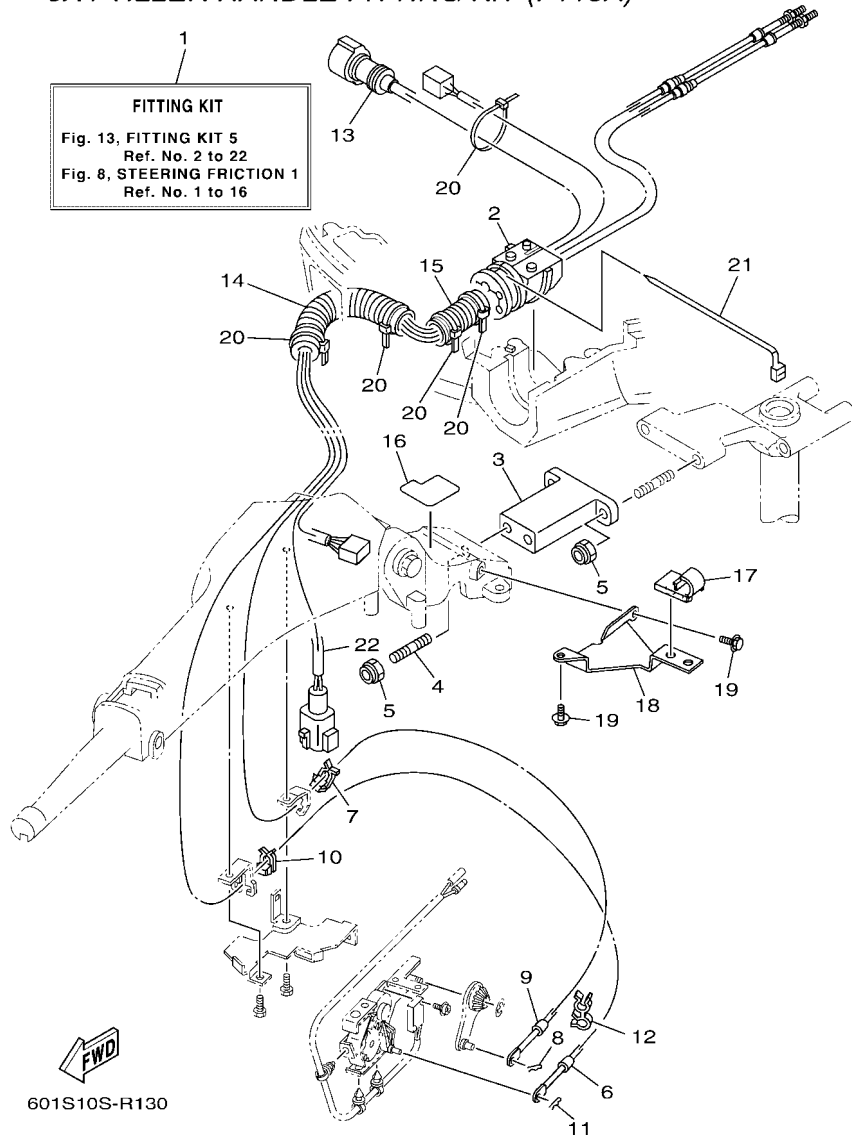


601S10S-Q120

FIG. 12 STEERING FRICTION 3

REF. NO.	PART NO.	DESCRIPTION	601S				REMARKS
1	67C-42508-04	STEERING FRICTION ASSY	1				
2	67C-42527-03	.PLATE, FRICTION	1				
3	90109-06M88	.BOLT	2				
4	67C-42525-00	.PLATE, FRICTION	1				
5	92990-06100	.WASHER, SPRING	2				
6	67C-42562-00	.SHAFT, STEERING LOCK	1				
7	67C-42561-00	.KNOB, STEERING LOCK	1				
8	689-43633-00	.COVER, TILT LEVER	1				
9	90202-10M56	.WASHER, PLATE	1				
10	65W-42528-00	.PLATE, FRICTION	2				
11	90209-10M26	.WASHER	1				
12	90387-05053	.COLLAR	1				
13	90185-10M14	.NUT, SELF-LOCKING	1				
14	90387-05054	.COLLAR	1				
15	97095-05020	.BOLT	1				
16	92995-05600	.WASHER	1				
17	95380-05600	.NUT	1				
18	90201-106M5	.WASHER, PLATE	1				

6X4 TILLER HANDLE FITTING KIT (F115A)

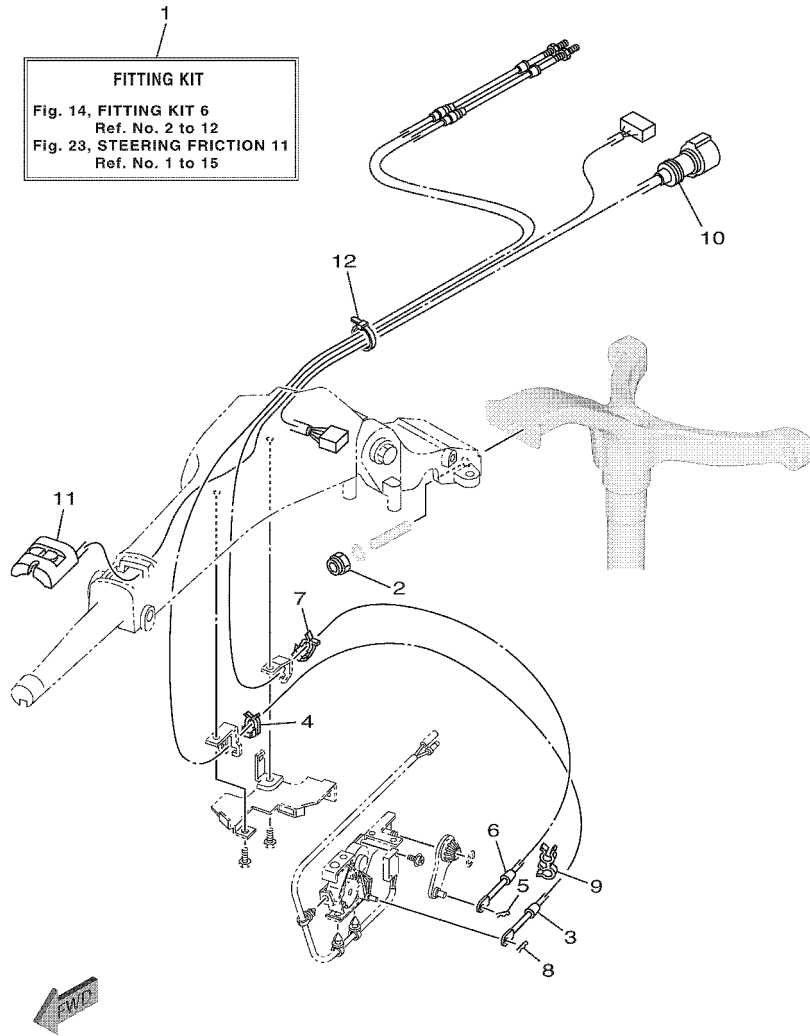


601S10S-R130

FIG. 13 FITTING KIT 5

REF. NO.	PART NO.	DESCRIPTION	601S				REMARKS
1	6X4-42102-B1	FITTING KIT	1				LM FOR EU & ANZ
2	68V-42725-10	GROMMET	1				
3	6X4-42121-11-8D	BRACKET	1				
4	90116-10062	BOLT, STUD	2				
5	90185-10027	NUT, SELF-LOCKING	4				
6	67G-48321-20	CABLE	1				
7	63D-48538-00	CLAMP, CABLE 1	1				
8	90468-10005	CLIP	1				
9	67G-26301-10	THROTTLE CABLE ASSY	1				
10	63D-48538-00	CLAMP, CABLE 1	1				
11	90468-10005	CLIP	1				
12	90464-09M42	CLAMP	1				
13	6X4-82586-20	EXT., WIRE HARNESS (L:1.25M)	1				
14	90447-22007	TUBE	1				
15	6G5-83557-00	TUBE	1				
16	6X4-42735-00	PROTECTOR	1				
17	63D-24367-00	CLAMP, FUEL PIPE 2	1				
18	6X4-24364-00	STAY	1				
19	97595-06516	BOLT, WITH WASHER	2				
20	90465-13M24	CLAMP	5				
21	90465-13M30	CLAMP	1				
22	6X4-83653-00	WIRE, LEAD (L:1250MM)	1				

6X4 TILLER HANDLE FITTING KIT (F20F, F25C, F25G)

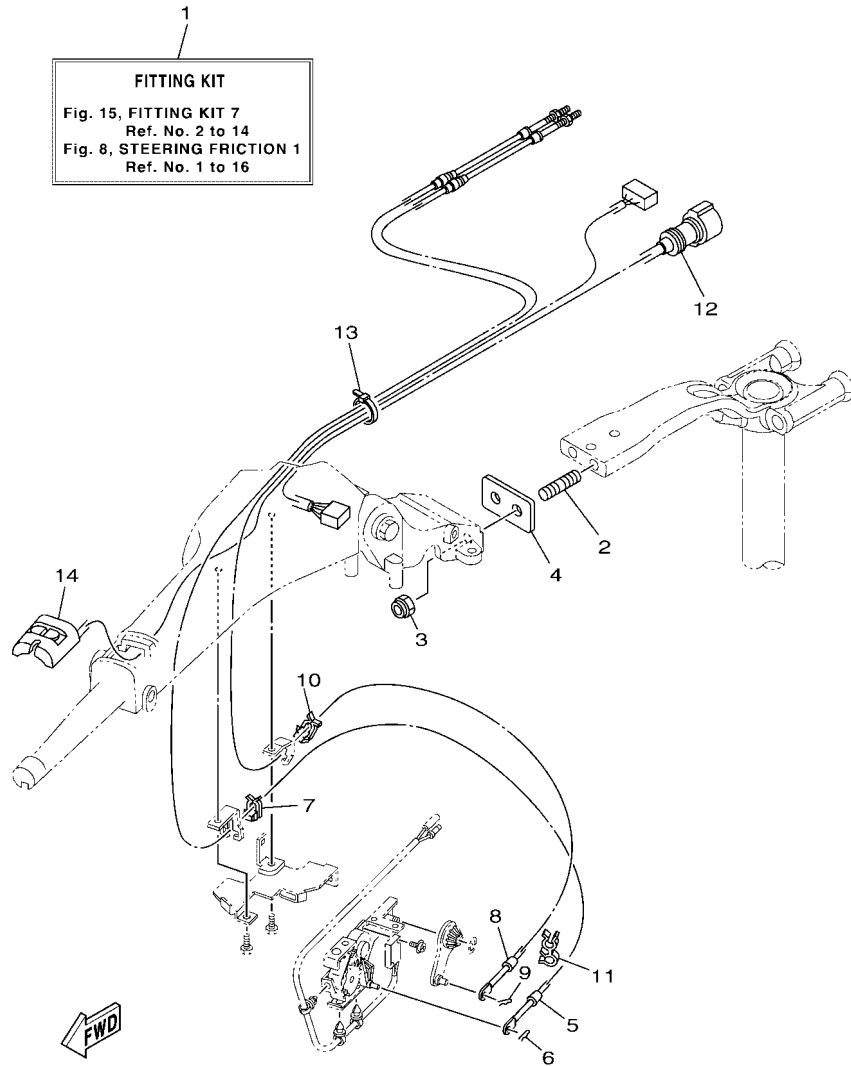


601S10SDR140

FIG. 14 FITTING KIT 6

REF. NO.	PART NO.	DESCRIPTION	601S				REMARKS
1	6X4-42102-E0	FITTING KIT	1				LM FOR US
	6X4-42102-F0	FITTING KIT	1				LM FOR EU & ANZ
2	90185-10027	NUT, SELF-LOCKING	2				
3	63D-48321-11	CABLE	1				
4	63D-48538-00	CLAMP, CABLE 1	1				
5	90468-10005	CLIP	1				
6	6FM-26301-10	THROTTLE CABLE ASSY	1				
7	63D-48538-00	CLAMP, CABLE 1	1				
8	90468-10005	CLIP	1				
9	90464-09M42	CLAMP	1				
10	6X4-82586-10	EXT., WIRE HARNESS (L:950MM)	1				
11	6X4-81860-00	SWITCH ASSY	1				
12	90465-13M39	CLAMP	1				

6X4 TILLER HANDLE FITTING KIT (F75B,F80D,F90B,F100F)



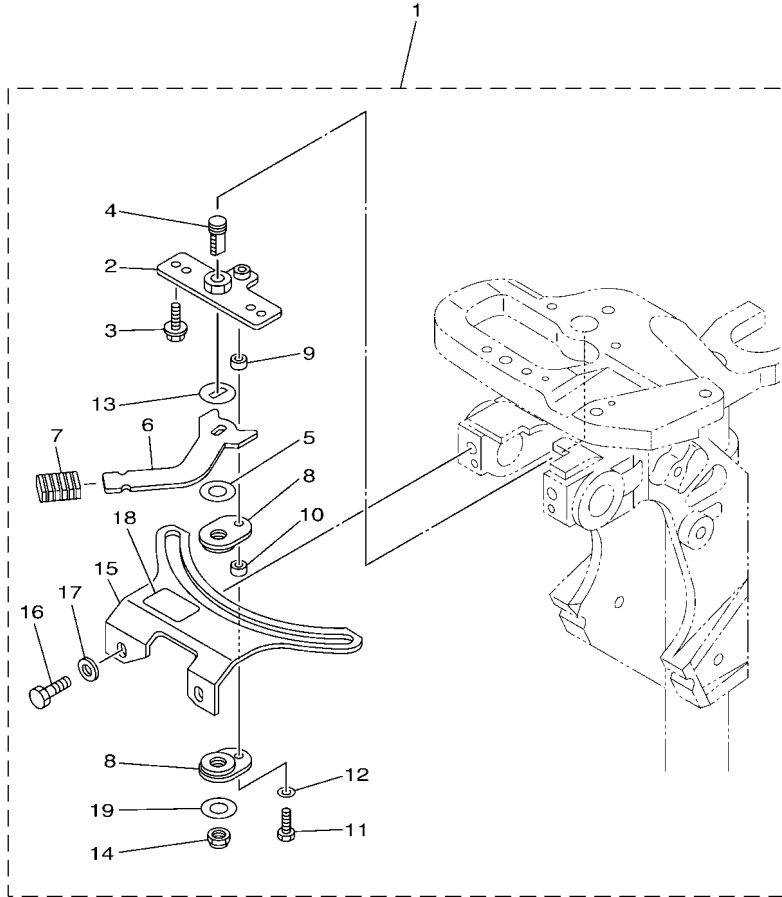
601S10S-R150

FIG. 15 FITTING KIT 7

REF. NO.	PART NO.	DESCRIPTION	601S				REMARKS
1	6X4-42102-G0	FITTING KIT	1				LM FOR EU & ANZ
2	90116-10063	BOLT, STUD	2				
3	90185-10027	NUT, SELF-LOCKING	2				
4	6EK-42121-00	BRACKET	1				
5	6EK-48321-00	CABLE	1				
6	90468-10005	CLIP	1				
7	63D-48538-00	CLAMP, CABLE 1	1				
8	6FP-26301-00	THROTTLE CABLE ASSY	1				
9	90468-10005	CLIP	1				
10	63D-48538-00	CLAMP, CABLE 1	1				
11	90464-09M42	CLAMP	1				
12	6X4-82586-10	EXT., WIRE HARNESS (L:950MM)	1				
13	90465-13M24	CLAMP	1				
14	6X4-81860-00	SWITCH ASSY	1				

STEERING FRICTION

Part No.	Applicable model
6AH-42508-01	F8F(F8B), FT8G, F9.9J(F9.9B), F9.9H, FT9.9L(T9.9B), F15C (F15A), F20B (F20A), F20C
6AH-42508-11	FT9.9L(T9.9B), F15C (F15A), F20B (F20A)



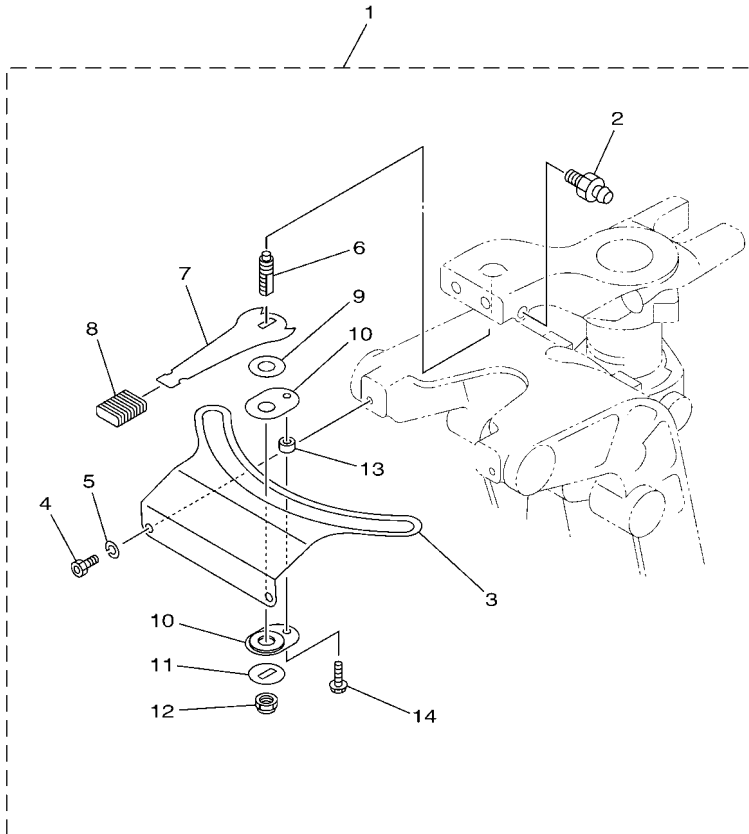
601S10S-Q140

FIG. 16 STEERING FRICTION 4

REF. NO.	PART NO.	DESCRIPTION	601S				REMARKS
1	6AH-42508-01	STEERING FRICTION ASSY	1				UR
	6AH-42508-11	STEERING FRICTION ASSY	1				UR
2	68T-42525-01	.PLATE, FRICTION	1				
3	90119-05018	.BOLT, WITH WASHER	2				
4	67C-42562-00	.SHAFT, STEERING LOCK	1				
5	90202-10M56	.WASHER, PLATE	1				
6	68T-42561-00	.KNOB, STEERING LOCK	1				
7	689-43633-00	.COVER, TILT LEVER	1				
8	65W-42528-00	.PLATE, FRICTION	2				
9	90387-05053	.COLLAR	1				
10	90387-05054	.COLLAR	1				
11	97095-05020	.BOLT	1				
12	92995-05600	.WASHER	1				
13	90209-10M26	.WASHER	1				
14	90185-10M14	.NUT, SELF-LOCKING	1				
15	6AH-42527-00	.PLATE, FRICTION	1				
16	90101-08022	.BOLT	2				
17	90201-08065	.WASHER, PLATE	2				
18	68T-43155-00	.MARK 1	1				FOR 6AH-42508-01
19	90201-106M5	.WASHER, PLATE	1				

STEERING FRICTION

Part No.	Applicable model
65W-42508-00	F25D (F25A/F25B), (E)40X



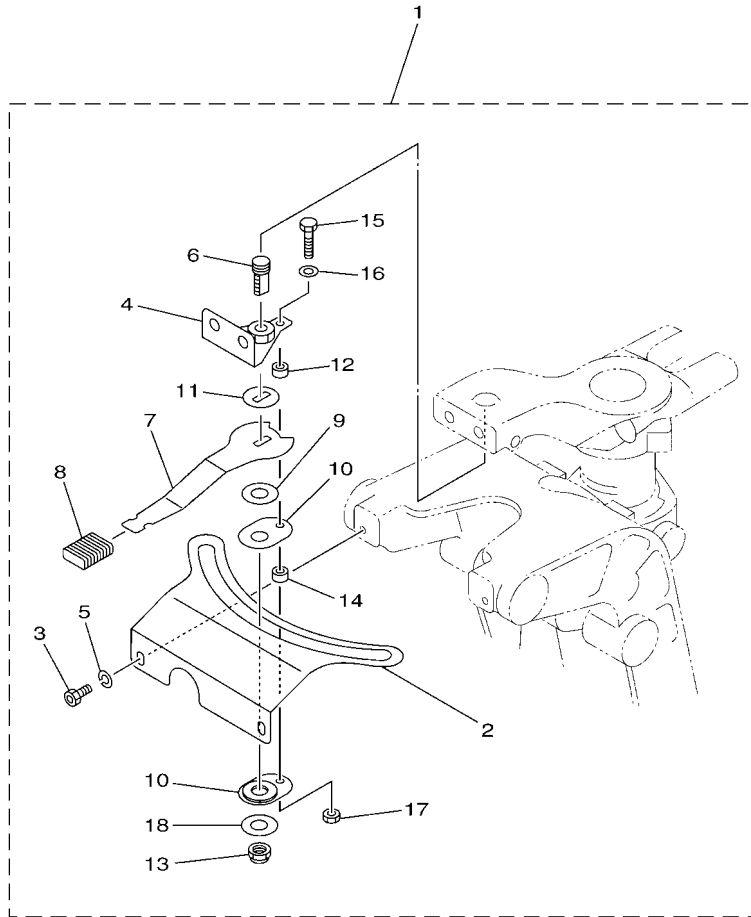
601S10S-M180

FIG. 17 STEERING FRICTION 5

REF. NO.	PART NO.	DESCRIPTION	601S				REMARKS
1	65W-42508-00	STEERING FRICTION ASSY	1				
2	93700-06M03	.NIPPLE, GREASE	1				
3	65W-42527-00	.PLATE, FRICTION	1				
4	90109-06M88	.BOLT	2				
5	92990-06100	.WASHER, SPRING	2				
6	65W-42562-00	.SHAFT, STEERING LOCK	1				
7	65W-42561-00	.KNOB, STEERING LOCK	1				
8	689-43633-00	.COVER, TILT LEVER	1				
9	90202-10M56	.WASHER, PLATE	1				
10	65W-42528-00	.PLATE, FRICTION	2				
11	90209-10M26	.WASHER	1				
12	90185-10M14	.NUT, SELF-LOCKING	1				
13	90387-05054	.COLLAR	1				
14	90109-05M89	.BOLT	1				

STEERING FRICTION

Part No.	Applicable model
67C-42508-04	F30B (F30A), F40F(F40A)



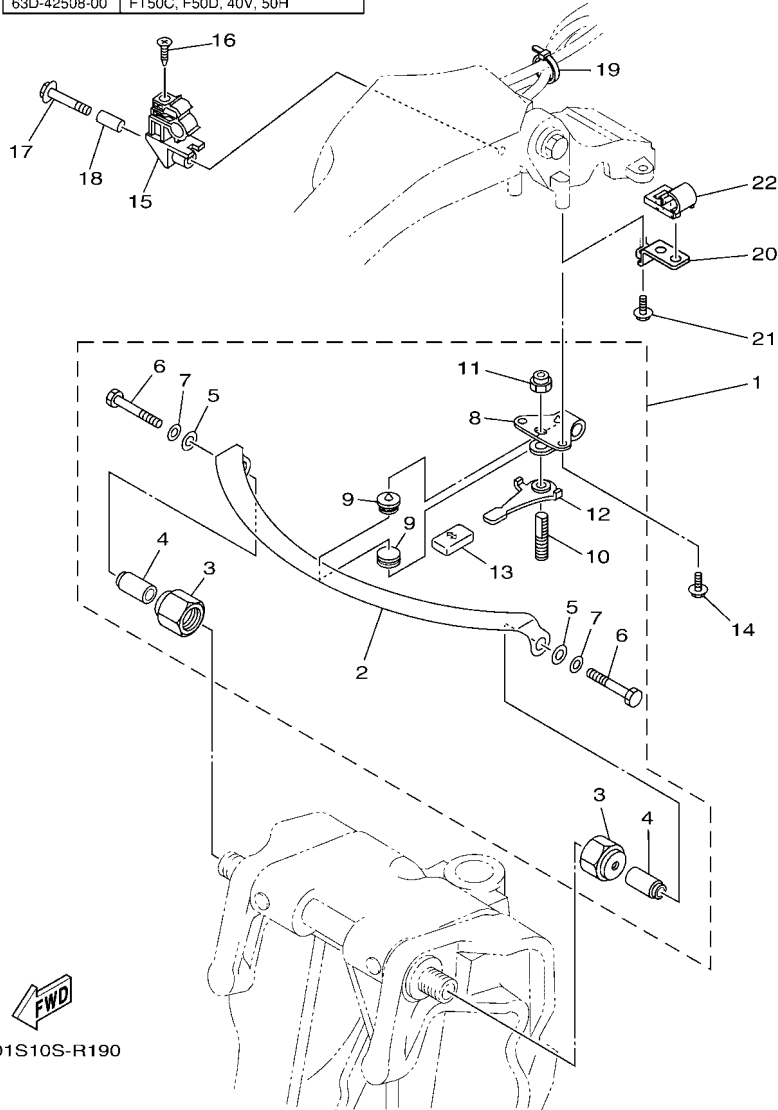
601S10S-L170

FIG. 18 STEERING FRICTION 6

REF. NO.	PART NO.	DESCRIPTION	601S				REMARKS
1	67C-42508-04	STEERING FRICTION ASSY	1				
2	67C-42527-03	.PLATE, FRICTION	1				
3	90109-06M88	.BOLT	2				
4	67C-42525-00	.PLATE, FRICTION	1				
5	92990-06100	.WASHER, SPRING	2				
6	67C-42562-00	.SHAFT, STEERING LOCK	1				
7	67C-42561-00	.KNOB, STEERING LOCK	1				
8	689-43633-00	.COVER, TILT LEVER	1				
9	90202-10M56	.WASHER, PLATE	1				
10	65W-42528-00	.PLATE, FRICTION	2				
11	90209-10M26	.WASHER	1				
12	90387-05053	.COLLAR	1				
13	90185-10M14	.NUT, SELF-LOCKING	1				
14	90387-05054	.COLLAR	1				
15	97095-05020	.BOLT	1				
16	92995-05600	.WASHER	1				
17	95380-05600	.NUT	1				
18	90201-106M5	.WASHER, PLATE	1				

STEERING FRICTION

Part No.	Applicable model
63D-42508-00	FT50C, F50D, 40V, 50H



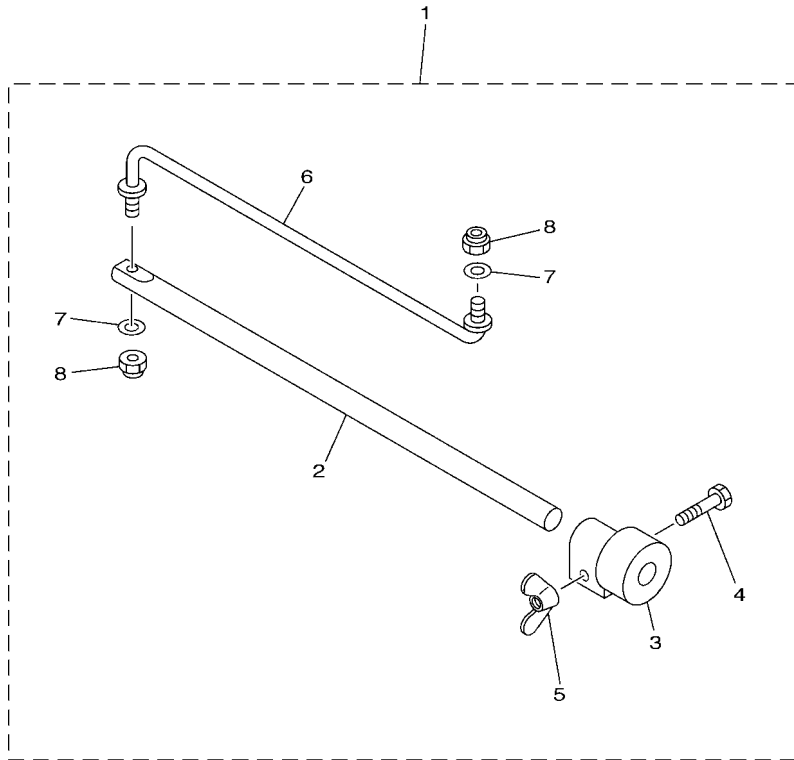
601S10S-R190

FIG. 19 STEERING FRICTION 7

REF. NO.	PART NO.	DESCRIPTION	601S				REMARKS
1	63D-42508-00	STEERING FRICTION ASSY	1				
2	63D-42527-00	.PLATE, FRICTION	1				
3	63D-42546-00	.NUT	2				
4	63D-42541-00	.PIPE 1	2				
5	90201-08M01	.WASHER, PLATE	2				
6	97095-08050	.BOLT	2				
7	92990-08600	.WASHER, PLATE	2				
8	63D-42526-00	.PLATE, FRICTION	1				
9	63D-42528-00	.PLATE, FRICTION	2				
10	63D-42562-00	.SHAFT, STEERING LOCK	1				
11	90185-10M01	.NUT, SELF-LOCKING	1				
12	63D-42561-00	.KNOB, STEERING LOCK	1				
13	682-43318-01	.COVER	1				
14	97595-06516	BOLT, WITH WASHER	2				
15	63D-82361-00	CLAMP, CORD	1				
16	90161-06M00	SCREW, TAPPING	1				
17	97595-06535	BOLT, WITH WASHER	1				
18	90387-06M26	COLLAR	1				
19	90465-13M36	CLAMP	1				
20	63D-24364-10	STAY	1				
21	97595-06516	BOLT, WITH WASHER	1				
22	63D-24367-00	CLAMP, FUEL PIPE 2	1				

STEERING FRICTION

Part No.	Applicable model
692-42508-01	E55D, 60F, 70B, 90A



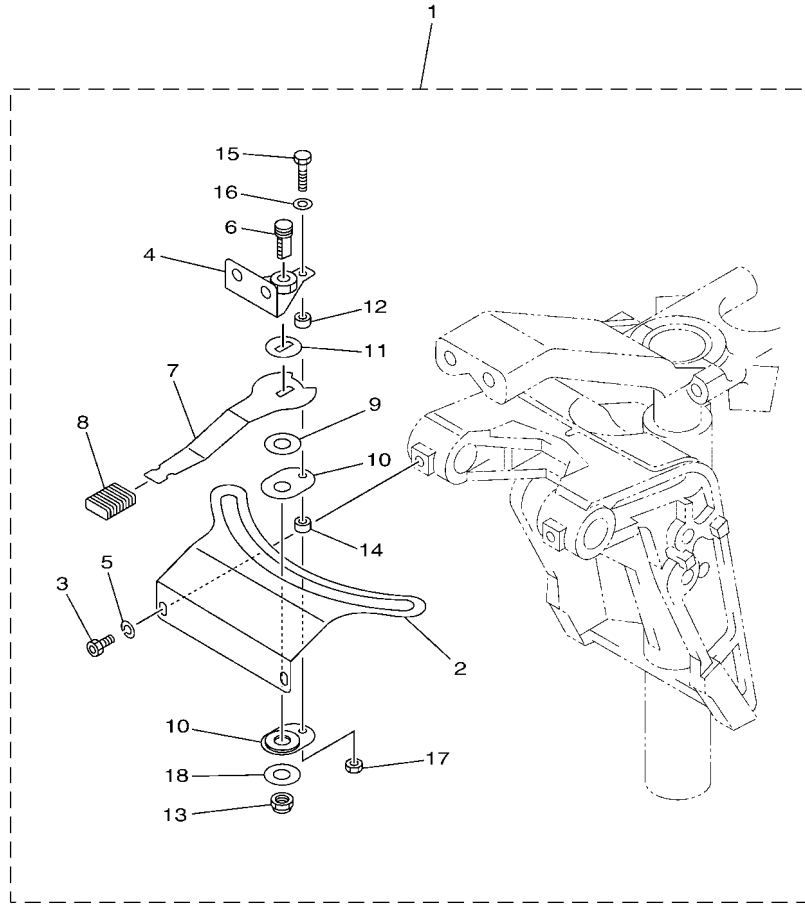
601S10S-R200

FIG. 20 STEERING FRICTION 8

REF. NO.	PART NO.	DESCRIPTION	601S				REMARKS
1	692-42508-01	STEERING FRICTION ASSY	1				
2	663-42518-00	.SHAFT, FRICTION	1				
3	663-42528-00	.PLATE, FRICTION	1				
4	97080-06035	.BOLT	1				
5	90175-06003	.NUT, WING	1				
6	692-42515-01	.ROD, STEERING LINK	1				
7	92990-08600	.WASHER, PLATE	2				
8	90185-08057	.NUT, SELF-LOCKING	2				

STEERING FRICTION

Part No.	Applicable model
6C5-42508-01	F40H, F50H (F50B), FT50J (T50B), F60F (F60B), FT60G (T60B), F70F(F70A)



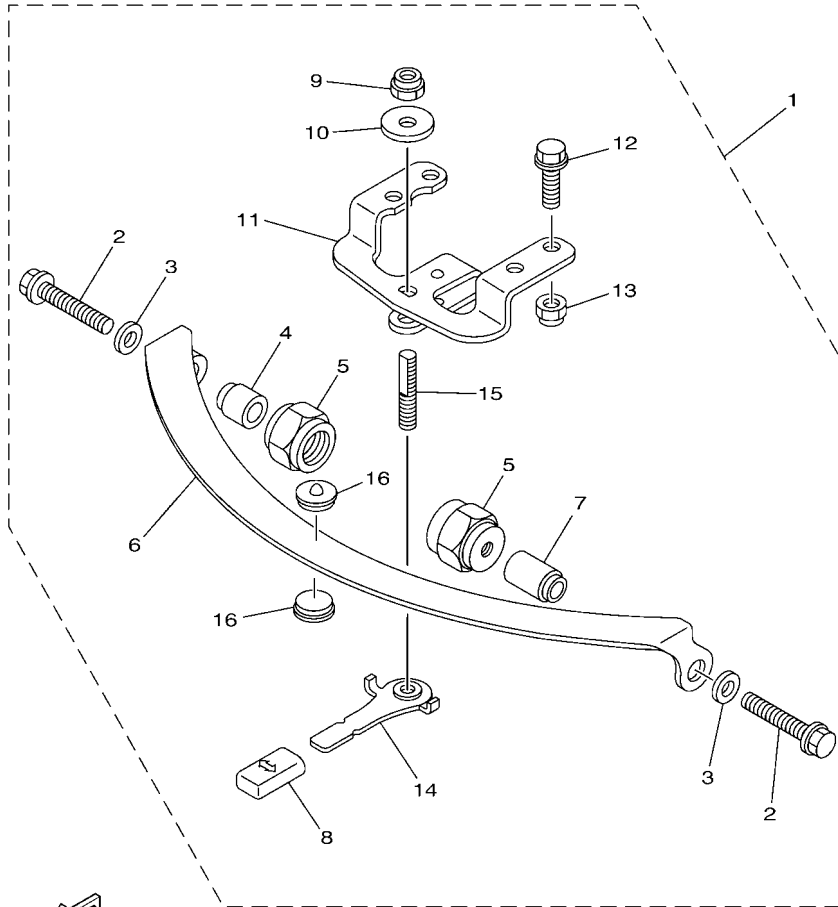
601S10S-R210

FIG. 21 STEERING FRICTION 9

REF. NO.	PART NO.	DESCRIPTION	601S				REMARKS
1	6C5-42508-01	STEERING FRICTION ASSY	1				
2	6C5-42527-00	.PLATE, FRICTION	1				
3	90109-06M88	.BOLT	2				
4	67C-42525-00	.PLATE, FRICTION	1				
5	92990-06100	.WASHER, SPRING	2				
6	67C-42562-00	.SHAFT, STEERING LOCK	1				
7	67C-42561-00	.KNOB, STEERING LOCK	1				
8	689-43633-00	.COVER, TILT LEVER	1				
9	90202-10M56	.WASHER, PLATE	1				
10	65W-42528-00	.PLATE, FRICTION	2				
11	90209-10M26	.WASHER	1				
12	90387-05053	.COLLAR	1				
13	90185-10M14	.NUT, SELF-LOCKING	1				
14	90387-05054	.COLLAR	1				
15	97095-05020	.BOLT	1				
16	92995-05600	.WASHER	1				
17	95380-05600	.NUT	1				
18	90201-106M5	.WASHER, PLATE	1				

STEERING FRICTION

Part No.	Applicable model
67G-42508-10	F75B (F75A), F75C, F75D (F75B), F80B (F80A), F80D, F90B (F90A), F90C (F90B) F100B, F100D (F100A) F100F, F115A, F115B (F115B), VF115A, F130A (F130A)



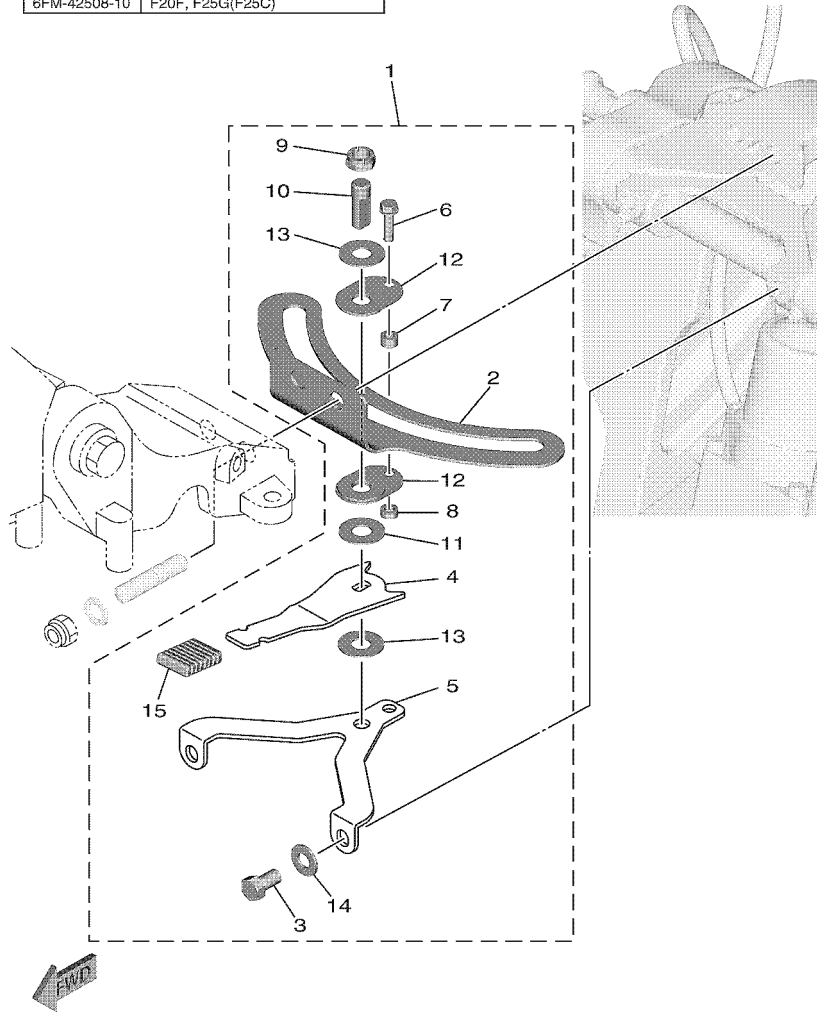
601S10S-R220

FIG. 22 STEERING FRICTION 10

REF. NO.	PART NO.	DESCRIPTION	601S				REMARKS
1	67G-42508-10	STEERING FRICTION ASSY	1				
2	90119-08M74	.BOLT, WITH WASHER	2				
3	90201-08M01	.WASHER, PLATE	2				
4	67G-42541-00	.PIPE 1	1				
5	67G-42546-00	.NUT	2				
6	63D-42527-00	.PLATE, FRICTION	1				
7	67G-42541-10	.PIPE 1	1				
8	682-43318-01	.COVER	1				
9	90185-10M14	.NUT, SELF-LOCKING	1				
10	90201-10M76	.WASHER, PLATE	1				
11	6X4-42526-00	.PLATE, FRICTION	1				
12	97595-08525	.BOLT, WITH WASHER	2				
13	90185-08057	.NUT, SELF-LOCKING	2				
14	67G-42561-00	.KNOB, STEERING LOCK	1				
15	67G-42562-00	.SHAFT, STEERING LOCK	1				
16	63D-42528-00	.PLATE, FRICTION	2				

STEERING FRICTION

Part No.	Applicable model
6FM-42508-10	F20F, F25G(F25C)



601S10SDR230

FIG. 23 STEERING FRICTION 11

REF. NO.	PART NO.	DESCRIPTION	601S				REMARKS
1	6FM-42508-10	STEERING FRICTION ASSY	1				
2	6FM-42527-00	.PLATE, FRICTION	1				
3	90109-08M91	.BOLT	2				
4	6FM-42561-10	.KNOB, STEERING LOCK	1				
5	6FM-42525-10	.PLATE, FRICTION	1				
6	97595-05520	.BOLT, WITH WASHER	1				
7	90387-05054	.COLLAR	1				
8	90387-05053	.COLLAR	1				
9	90185-10M14	.NUT, SELF-LOCKING	1				
10	67C-42562-00	.SHAFT, STEERING LOCK	1				
11	90202-10M56	.WASHER, PLATE	1				
12	65W-42528-00	.PLATE, FRICTION	2				
13	90201-106M5	.WASHER, PLATE	2				
14	92995-08200	.WASHER	2				
15	689-43633-00	.COVER, TILT LEVER	1				

NUMERICAL INDEX

PART NO.	REF. NO.	PART NO.	REF. NO.	PART NO.	REF. NO.	PART NO.	REF. NO.	PART NO.	REF. NO.	PART NO.	REF. NO.
6X4-14137-00	1 - 26	63D-42126-00	4 - 17	65W-42528-00	10 - 10	6X4-42821-00	4 - 30	67G-48321-20	13 - 6	69W-82575-00	5 - 5
	4 - 26	6X4-42128-00	1 - 13		12 - 10	68T-43155-00	16 - 18	6H1-48321-21	4 - 33	676-82577-01	2 - 2
6X4-24364-00	7 - 19		4 - 13		16 - 8	682-43318-01	8 - 8	63D-48538-00	4 - 38		3 - 2
	13 - 18	6X4-42131-01	1 - 45		17 - 10		19 - 13		4 - 44		5 - 2
63D-24364-10	19 - 20		4 - 52		18 - 10		22 - 8		6 - 7	689-8257Y-00	2 - 7
63D-24367-00	7 - 18	6X4-42131-11	1 - 45		21 - 10	689-43633-00	10 - 8		7 - 7		3 - 7
	13 - 17	6X4-42137-00	1 - 7		23 - 12		12 - 8		7 - 10		5 - 7
	19 - 22		4 - 7	663-42528-00	20 - 3		16 - 7		9 - 4	6X4-82586-10	5 - 10
69W-26301-00	9 - 6	6X4-42159-00	1 - 39	63D-42541-00	19 - 4		17 - 8		9 - 7		6 - 10
	11 - 6		4 - 46	67G-42541-00	8 - 4		18 - 8		11 - 4		9 - 10
6EK-26301-00	6 - 8	6X4-42177-00	1 - 6		22 - 4		21 - 8		11 - 7		11 - 10
6FP-26301-00	15 - 8		4 - 6	67G-42541-10	8 - 7		23 - 15		13 - 7		14 - 10
67G-26301-10	7 - 9	63D-42508-00	19 - 1		22 - 7	6X4-44100-01	1 - 21		13 - 10		15 - 12
	13 - 9	65W-42508-00	17 - 1	63D-42546-00	19 - 3		4 - 21		14 - 4	6X4-82586-20	7 - 13
6FM-26301-10	14 - 6	692-42508-01	20 - 1	67G-42546-00	8 - 5	6X4-44102-00	1 - 23		14 - 7		13 - 13
6X4-26367-00	1 - 34	6AH-42508-01	16 - 1		22 - 5		4 - 23		15 - 7	6X4-83383-00	2 - 10
	1 - 37	6C5-42508-01	10 - 1	63D-42561-00	19 - 12	6X4-44114-00	3 - 15		15 - 10		3 - 10
	4 - 35		21 - 1	65W-42561-00	17 - 7	6X4-44132-00	1 - 25	6X4-48538-00	1 - 33		5 - 11
	4 - 42	67C-42508-04	12 - 1	67C-42561-00	10 - 7		4 - 25		4 - 34	6X4-83386-00	2 - 11
6X4-41291-00	1 - 8		18 - 1		12 - 7	6X4-44139-01	1 - 9	6X4-48538-10	1 - 36		3 - 11
	4 - 8	67G-42508-10	8 - 1		18 - 7		4 - 9		4 - 41		5 - 12
6X4-42102-11	7 - 1		22 - 1		21 - 7	6X4-44159-00-4D	4 - 47	6X4-81860-00	6 - 12	6G5-83557-00	13 - 15
6X4-42102-23	9 - 1	6FM-42508-10	23 - 1	67G-42561-00	8 - 14	6X4-44159-00-8D	1 - 40		7 - 14	6K3-83557-00	7 - 16
6X4-42102-71	11 - 1	6AH-42508-11	16 - 1		22 - 14	6X4-44173-00	1 - 41		9 - 11	6H4-83589-00	3 - 18
6X4-42102-81	11 - 1	692-42515-01	20 - 6	68T-42561-00	16 - 6		4 - 48		11 - 11	6X4-83653-00	7 - 23
6X4-42102-91	9 - 1	663-42518-00	20 - 2	6FM-42561-10	23 - 4	6X4-44177-00	1 - 12		14 - 11		13 - 22
6X4-42102-A1	7 - 1	63D-42562-00	19 - 10	63D-42562-00	19 - 10		4 - 12		15 - 14	6X4-83653-20	3 - 13
6X4-42102-B1	13 - 1	65W-42562-00	17 - 6	67C-42562-00	10 - 6	6X4-44188-00	1 - 15	6X4-81942-01	2 - 13		9 - 13
6X4-42102-C0	6 - 1	67C-42562-00	10 - 6		12 - 6		4 - 15		3 - 20		11 - 13
6X4-42102-E0	14 - 1		21 - 4		16 - 4	6G8-44191-00	1 - 43		5 - 14	6C5-84301-00	3 - 14
6X4-42102-F0	14 - 1	68T-42525-01	16 - 2		18 - 6		4 - 50	62Y-82361-00	5 - 16	6X4-85415-00	3 - 19
6X4-42102-G0	15 - 1	6FM-42525-10	23 - 5		21 - 6	6X4-47731-01	1 - 24	63D-82361-00	19 - 15	90101-08022	16 - 16
6X4-42103-0B	4 - 1	63D-42526-00	19 - 8		23 - 10		4 - 24	6X4-82510-01	2 - 1	90101-12014	1 - 49
6X4-42103-56	1 - 1	6X4-42526-00	8 - 11		22 - 11	703-48129-00	1 - 29		5 - 1		4 - 56
6X4-42103-66	1 - 1		22 - 11	67G-42562-00	8 - 15		4 - 29	6X4-82510-41	3 - 1	90109-05M89	17 - 14
6X4-42111-02-4D	4 - 2	63D-42527-00	8 - 6		22 - 15	6X4-48154-00	1 - 18	703-82532-00	2 - 3	90109-06M88	10 - 3
6X4-42111-02-8D	1 - 2		19 - 2	6X4-42725-01	1 - 47		4 - 18		3 - 3		12 - 3
6X4-42115-00	1 - 22		22 - 6		4 - 54	6X4-48215-00	1 - 4		5 - 3		17 - 4
	4 - 22	65W-42527-00	17 - 3	68V-42725-10	7 - 2		4 - 4	6X4-82540-00	1 - 28		18 - 3
6X4-42119-01	1 - 5	6AH-42527-00	16 - 15		13 - 2	6X4-48261-00	1 - 27		4 - 28		21 - 3
	4 - 5	6C5-42527-00	10 - 2	6X4-42727-00	3 - 17		4 - 27	682-82556-00	2 - 6	90109-08M91	23 - 3
6EK-42121-00	6 - 4	6X4-42527-00	21 - 2	6X4-42728-00	9 - 14	6EK-48321-00	6 - 5		3 - 6	90116-10031	7 - 5
	15 - 4		23 - 2		11 - 14		15 - 5		5 - 6	90116-10062	13 - 4
6X4-42121-00-8D	7 - 3	6FM-42527-00	23 - 2	6X4-42728-10	1 - 57	6H3-48321-02	4 - 40	6X4-82563-01	2 - 8	90116-10063	6 - 2
65W-42121-11-4D	4 - 55	67C-42527-03	12 - 2		4 - 64	63D-48321-11	14 - 3		3 - 8		15 - 2
6X4-42121-11-8D	13 - 3		18 - 2	6X4-42735-00	7 - 17	67C-48321-11	9 - 3		5 - 8	90119-05018	16 - 3
63D-42121-22-8D	1 - 48	63D-42528-00	8 - 16		13 - 16		11 - 3	69W-82575-00	2 - 5	90119-08M74	8 - 2
63D-42126-00	1 - 17		22 - 16	6X4-42821-00	1 - 30	67G-48321-20	7 - 6		3 - 5		22 - 2

NUMERICAL INDEX

PART NO.	REF. NO.	PART NO.	REF. NO.	PART NO.	REF. NO.	PART NO.	REF. NO.	PART NO.	REF. NO.	PART NO.	REF. NO.
90152-05007	1 - 10	90202-10M56	23 - 11	90465-13M24	7 - 21	92995-08200	23 - 14				
	4 - 10	90206-12M22	1 - 51		13 - 20	93700-06M03	1 - 3				
90161-06M00	19 - 16		4 - 58		15 - 13		4 - 3				
90161-06M03	5 - 17	90209-10M26	10 - 11	90465-13M30	7 - 22		17 - 2				
90175-06003	20 - 5		12 - 11		13 - 21	95380-05600	10 - 17				
90185-08057	8 - 13		16 - 13	90465-13M36	5 - 15		12 - 17				
	20 - 8		17 - 11		9 - 12		18 - 17				
	22 - 13		18 - 11		11 - 12		21 - 17				
90185-10027	5 - 23		21 - 11		19 - 19	95380-06600	1 - 19				
	6 - 3	90386-08032	1 - 16	90465-13M39	14 - 12		4 - 19				
	7 - 4		4 - 16	90468-10005	4 - 39	97080-06035	20 - 4				
	9 - 2	90386-12003	1 - 54		4 - 45	97095-05020	10 - 15				
	11 - 2		4 - 61		6 - 6		12 - 15				
	13 - 5	90386-26MA3	1 - 44		7 - 8		16 - 11				
	14 - 2		4 - 51		7 - 11		18 - 15				
	15 - 3	90387-05053	10 - 12		9 - 5		21 - 15				
90185-10M01	19 - 11		12 - 12		9 - 8	97095-06014	1 - 35				
90185-10M14	8 - 9		16 - 9		11 - 5		1 - 38				
	10 - 13		18 - 12		11 - 8		2 - 12				
	12 - 13		21 - 12		13 - 8		3 - 12				
	16 - 14		23 - 8		13 - 11		4 - 37				
	17 - 12	90387-05054	10 - 14		14 - 5		4 - 43				
	18 - 13		12 - 14		14 - 8		5 - 13				
	21 - 13		16 - 10		15 - 6	97095-06035	5 - 18				
	22 - 9		17 - 13		15 - 9	97095-08050	19 - 6				
	23 - 9		18 - 14	90501-23215	1 - 14	97595-05520	23 - 6				
90185-12M12	1 - 56		21 - 14		4 - 14	97595-06516	7 - 20				
	4 - 63		23 - 7	91490-20010	1 - 11		13 - 19				
90201-08065	16 - 17	90387-06M26	5 - 20		1 - 20		19 - 14				
90201-08M01	8 - 3		19 - 18		4 - 11		19 - 21				
	19 - 5	90387-12M02	1 - 52		4 - 20	97595-06530	1 - 32				
	22 - 3		4 - 59	92990-06100	10 - 5		4 - 32				
90201-106M5	10 - 18	90447-22006	5 - 21		12 - 5	97595-06535	19 - 17				
	12 - 18	90447-22007	7 - 15		17 - 5	97595-08025	8 - 12				
	16 - 19		13 - 14		18 - 5	97595-08525	22 - 12				
	18 - 18	90464-08M07	2 - 4		21 - 5	97595-08540	1 - 31				
	21 - 18		3 - 4	92990-08600	19 - 7		4 - 31				
	23 - 13		5 - 4		20 - 7	97780-60620	3 - 16				
90201-10M76	8 - 10	90464-09M42	4 - 36	92990-12200	1 - 50	97780-60920	1 - 42				
	22 - 10		6 - 9		4 - 57		4 - 49				
90201-12035	1 - 53		7 - 12	92990-12600	1 - 55	97980-06216	2 - 9				
	4 - 60		9 - 9		4 - 62		3 - 9				
90202-10M56	10 - 9		11 - 9	92995-05600	10 - 16		5 - 9				
	12 - 9		13 - 12		12 - 16	97985-06216	1 - 46				
	16 - 5		14 - 9		16 - 12		4 - 53				
	17 - 9		15 - 11		18 - 16						
	18 - 9	90465-13M24	5 - 22		21 - 16						
	21 - 9		6 - 11	92995-06600	5 - 19						