



PARTS CATALOGUE

RIGGING-STEERING



1N601-10SE1

()

RIGGING-STEERING
PARTS CATALOGUE

©2014 by Yamaha Motor Co., Ltd.
1st edition, September 2014

All rights reserved.

Any reprinting or unauthorized use
without the written permission of
Yamaha Motor Co., Ltd.
is expressly prohibited.

Printed in Japan.

FOREWORD

This Parts Catalogue is related to the parts for the model(s) on the cover page. When you are ordering replacement parts, please refer to this Parts Catalogue and quote both part numbers and part names correctly.

1. Modifications or additions which have been made after the issue of the Parts Catalogue will be announced in the Parts News.

It is advisable that you make the necessary corrections to the Parts Catalogue according to the Parts News.

2. Abbreviations

The following abbreviations are used in this Parts Catalogue.

“UR” Use specified parts number.

“UN” Use as many as needed.

“AP” Alternate Parts

“LM” Locally Made (Parts need to be ordered locally)

“F#” Frame No. (Applicable machine No.)

“O/S” Over Size

3. The number of components for assembly

- Parts, which are to be supplied in an assembly, are listed with a dot (.) in front of the part name as shown below.
- The numeral appearing to the right of each component part indicates the quantity of parts for each assembly unit.

| PART NO. | DESCRIPTION | Q'TY | REMARKS |
|--------------|--------------------------|------|---------|
| 2F5-83310-60 | FRONT FLASHER LIGHT ASSY | 2 | |
| 115-83311-60 | .BULB (6V-18W) | 1 | |

4. Applicable colours of graphics are represented in the “REMARKS” as shown below.

| PART NO. | DESCRIPTION | Q'TY | REMARKS |
|-----------------|---------------------|------|---------|
| 2N4-24110-00-X5 | FUEL TANK COMP. | 2 | MXR |
| 3J1-24240-10 | .GRAPHIC, FUEL TANK | 1 | FOR MXR |

5. Note that the illustrations for reference in finding parts numbers are not to be used for assembling. When assembling, please use the applicable service manual.

6. The asterisk (*) before a reference number indicates modified items after the first edition.

CONTENTS

| | |
|------------------------------|----|
| BASE HANDLE - ALL | 1 |
| BASE HANDLE ELECTRICAL | 4 |
| TILLER HANDLE KIT 1 | 5 |
| TILLER HANDLE KIT 2 | 8 |
| FITTING KIT 1 | 9 |
| FITTING KIT 2 | 10 |
| FITTING KIT 3 | 11 |
| STEERING FRICTION 1 | 12 |
| FITTING KIT 4 | 13 |
| STEERING FRICTION 2 | 14 |
| FITTING KIT 5 | 15 |
| FITTING KIT 6 | 16 |
| STEERING FRICTION 3 | 17 |
| FITTING KIT 7 | 18 |
| STEERING FRICTION 4 | 19 |
| FITTING KIT 8 | 20 |
| STEERING FRICTION 5 | 21 |
| STEERING FRICTION 6 | 22 |
| STEERING FRICTION 7 | 23 |
| STEERING FRICTION 8 | 24 |
| STEERING FRICTION 9 | 25 |
| STEERING FRICTION 10 | 26 |
| STEERING FRICTION 11 | 27 |
| STEERING FRICTION 12 | 28 |
| STEERING FRICTION 13 | 29 |

INDEX

| | |
|-----------------------|----|
| NUMERICAL INDEX | 30 |
|-----------------------|----|

6X4 TILLER HANDLE KIT (50-90 & F40-F115)

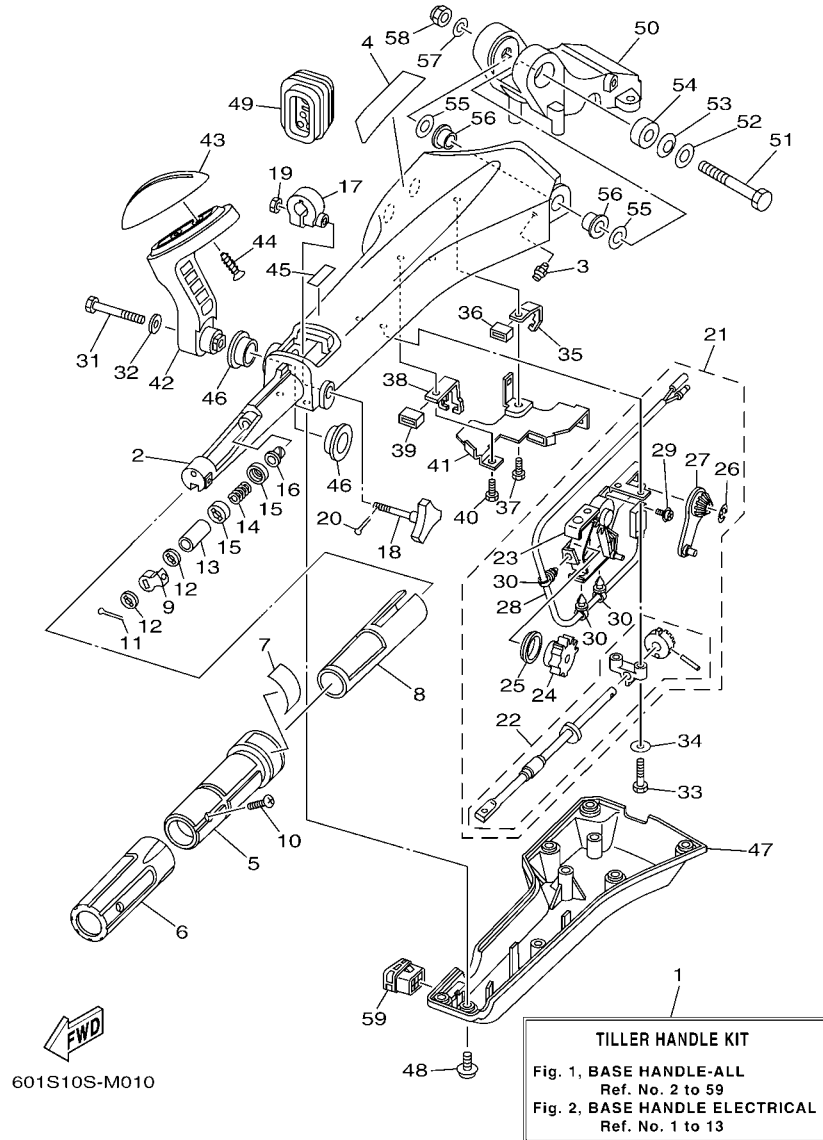
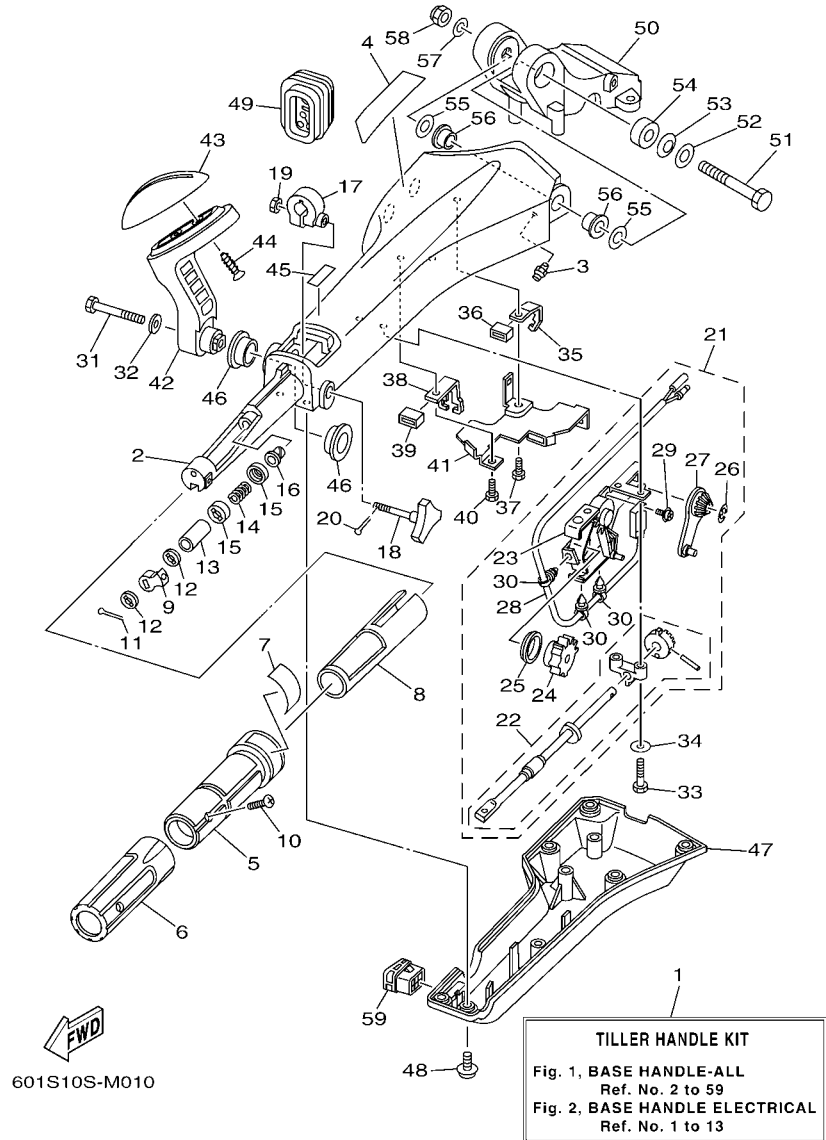


FIG. 1 BASE HANDLE - ALL

| REF. NO. | PART NO. | DESCRIPTION | QTY | REMARKS |
|----------|-----------------|-------------------------------|-----|---------|
| 1 | 6X4-42103-54 | TILLER HANDLE KIT | 1 | LM |
| 2 | 6X4-42111-02-8D | HANDLE, STEERING | 1 | |
| 3 | 93700-06M03 | NIPPLE, GREASE | 1 | |
| 4 | 6X4-48215-00 | GRAPHIC | 1 | |
| 5 | 6X4-42119-01 | GRIP, STEERING HANDLE | 1 | |
| 6 | 6X4-42177-00 | RUBBER, HANDLE | 1 | |
| 7 | 6X4-42137-00 | INDICATOR, THROTTLE | 1 | |
| 8 | 6X4-41291-00 | BUSHING | 1 | |
| 9 | 6X4-44139-01 | COLLAR | 1 | |
| 10 | 90152-05007 | SCREW, COUNTERSUNK | 1 | |
| 11 | 91490-20010 | PIN. COTTER | 1 | |
| 12 | 6X4-44177-00 | WASHER | 2 | |
| 13 | 6X4-42128-00 | COLLAR, DISTANCE 1 | 1 | |
| 14 | 90501-23215 | SPRING, COMPRESSION | 1 | |
| 15 | 6X4-44188-00 | WASHER | 2 | |
| 16 | 90386-08032 | BUSH | 1 | |
| 17 | 63D-42126-00 | FRICION, STEERING HANDLE GRIP | 1 | |
| 18 | 6X4-48154-00 | KNOB, THROTTLE | 1 | |
| 19 | 95380-06600 | NUT, HEXAGON | 1 | |
| 20 | 91490-20010 | PIN. COTTER | 1 | |
| 21 | 6X4-44100-01 | SHIFT LINK ASSY | 1 | |
| 22 | 6X4-42115-00 | .SHAFT, STEERING HANDLE | 1 | |
| 23 | 6X4-44102-00 | .SHIFT ASSIST ASSY. | 1 | |
| 24 | 6X4-47731-01 | .GEAR, DRIVE | 1 | |
| 25 | 6X4-44132-00 | .BUSHING | 1 | |
| 26 | 6X4-14137-00 | .CLIP | 1 | |
| 27 | 6X4-48261-00 | .ARM, THROTTLE | 1 | |

6X4 TILLER HANDLE KIT (50-90 & F40-F115)



601S10S-M010

FIG. 1 BASE HANDLE - ALL

| REF. NO. | PART NO. | DESCRIPTION | 601S | | | | REMARKS |
|----------|-----------------|------------------------|------|--|--|--|---------|
| 28 | 6X4-82540-00 | .NEUTRAL SWITCH ASSY | 1 | | | | |
| 29 | 703-48129-00 | .SCREW 3 | 2 | | | | |
| 30 | 6X4-42821-00 | .BAND, CLAMP | 3 | | | | |
| 31 | 97095-08040 | BOLT | 1 | | | | |
| 32 | 92995-08600 | WASHER | 1 | | | | |
| 33 | 97095-06030 | BOLT | 2 | | | | |
| 34 | 92995-06600 | WASHER | 2 | | | | |
| 35 | 6X4-48538-00 | CLAMP, CABLE 1 | 1 | | | | |
| 36 | 6X4-26367-00 | PROTECTOR | 1 | | | | |
| 37 | 97095-06014 | BOLT | 1 | | | | |
| 38 | 6X4-48538-10 | CLAMP, CABLE 1 | 1 | | | | |
| 39 | 6X4-26367-00 | PROTECTOR | 1 | | | | |
| 40 | 97095-06014 | BOLT | 1 | | | | |
| 41 | 6X4-42159-00 | STAY | 1 | | | | |
| 42 | 6X4-44159-00-8D | HANDLE, GEAR SHIFT | 1 | | | | |
| 43 | 6X4-44173-00 | LEVER, SHIFT CONTROL | 1 | | | | |
| 44 | 97780-60920 | SCREW, TAPPING | 2 | | | | |
| 45 | 6G8-44191-00 | INDICATOR, SHIFT | 1 | | | | |
| 46 | 90386-26MA3 | BUSH | 2 | | | | |
| 47 | 6X4-42131-01 | COVER, HANDLE STEERING | 1 | | | | |
| 48 | 97985-06216 | SCREW, WITH WASHER | 6 | | | | |
| 49 | 6X4-42725-01 | GROMMET | 1 | | | | |
| 50 | 63D-42121-22-8D | BRACKET | 1 | | | | |
| 51 | 90101-12014 | BOLT | 1 | | | | |
| 52 | 92990-12200 | WASHER, PLAIN | 1 | | | | |
| 53 | 90206-12M22 | WASHER, WAVE | 1 | | | | |
| 54 | 90387-12M02 | COLLAR | 1 | | | | |

6X4 TILLER HANDLE KIT (50-90 & F40-F115)

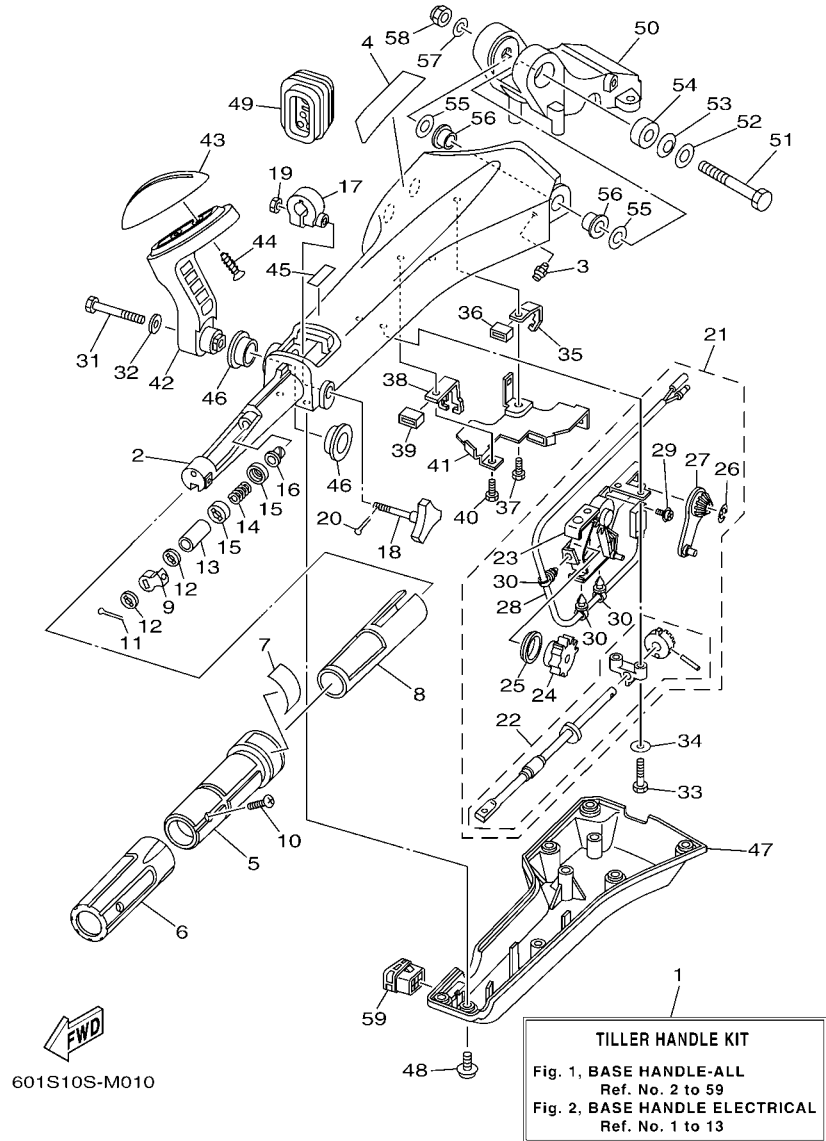
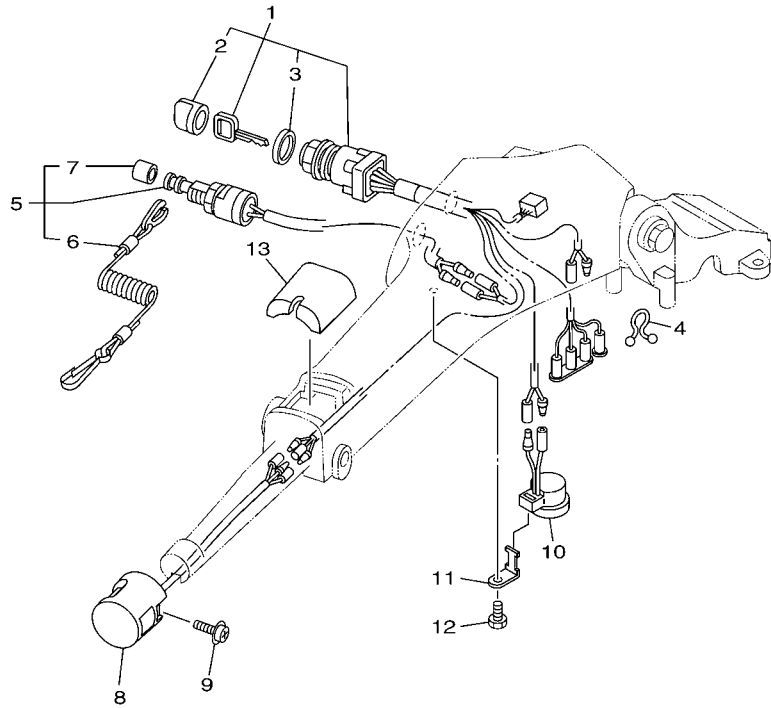


FIG. 1 BASE HANDLE - ALL

| REF. NO. | PART NO. | DESCRIPTION | 601S | | | | REMARKS |
|----------|--------------|-------------------|------|--|--|--|---------|
| 55 | 90201-12035 | WASHER, PLATE | 2 | | | | |
| 56 | 90386-12003 | BUSH | 2 | | | | |
| 57 | 92990-12600 | WASHER, PLATE | 1 | | | | |
| 58 | 90185-12M12 | NUT, SELF-LOCKING | 1 | | | | |
| 59 | 6X4-42728-10 | CAP | 1 | | | | |
| ----- | | | | | | | |
| ----- | | | | | | | |
| ----- | | | | | | | |
| ----- | | | | | | | |
| ----- | | | | | | | |
| ----- | | | | | | | |
| ----- | | | | | | | |
| ----- | | | | | | | |
| ----- | | | | | | | |
| ----- | | | | | | | |

6X4 TILLER HANDLE KIT (50-90 & F40-F115)



601S10S-K020

FIG. 2 BASE HANDLE ELECTRICAL

| REF. NO. | PART NO. | DESCRIPTION | 601S | | | | REMARKS |
|----------|--------------|-------------------------|------|--|--|--|---------|
| 1 | 6X4-82510-01 | MAIN SWITCH ASSY | 1 | | | | |
| 2 | 676-82577-01 | .CAP, KEY | 1 | | | | |
| 3 | 703-82532-00 | .CAP | 1 | | | | |
| 4 | 90464-08M07 | CLAMP | 1 | | | | |
| 5 | 69W-82575-00 | ENGINE STOP SWITCH ASSY | 1 | | | | |
| 6 | 682-82556-00 | .LANYARD, STOP SWITCH | 1 | | | | |
| 7 | 689-8257Y-00 | .CAP | 1 | | | | |
| 8 | 6X4-82563-00 | TRIM & TILT SWITCH ASSY | 1 | | | | |
| 9 | 97980-06216 | SCREW, WITH WASHER | 1 | | | | |
| 10 | 6X4-83383-00 | BUZZER | 1 | | | | |
| 11 | 6X4-83386-00 | STAY, BUZZER | 1 | | | | |
| 12 | 97095-06014 | BOLT | 1 | | | | |
| 13 | 6X4-81942-01 | COVER | 1 | | | | |
| | | | | | | | |
| | | | | | | | |
| | | | | | | | |
| | | | | | | | |

6X4 TILLER HANDLE KIT (F25A)

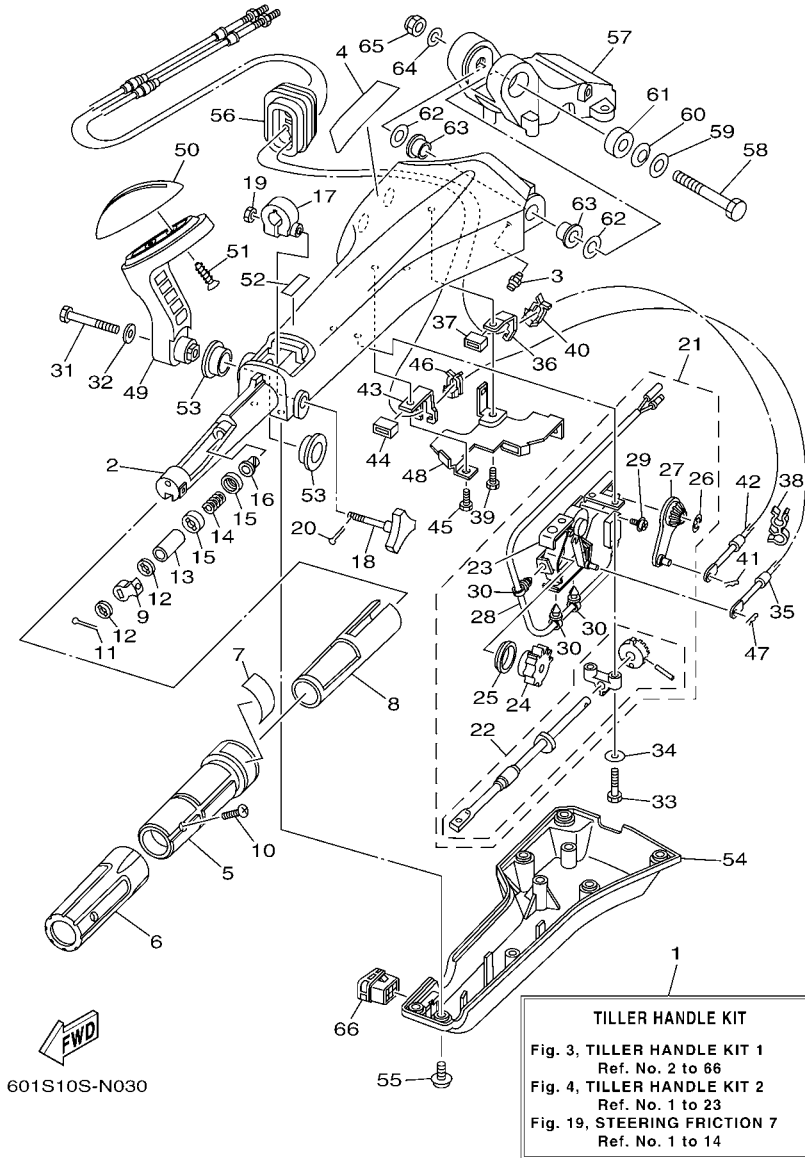


FIG. 3 TILLER HANDLE KIT 1

| REF. NO. | PART NO. | DESCRIPTION | 601S | | | | REMARKS |
|----------|-----------------|--------------------------------|------|--|--|--|---------|
| 1 | 6X4-42103-09 | TILLER HANDLE KIT | 1 | | | | LM |
| 2 | 6X4-42111-02-4D | HANDLE, STEERING | 1 | | | | |
| 3 | 93700-06M03 | NIPPLE, GREASE | 1 | | | | |
| 4 | 6X4-48215-00 | GRAPHIC | 1 | | | | |
| 5 | 6X4-42119-01 | GRIP, STEERING HANDLE | 1 | | | | |
| 6 | 6X4-42177-00 | RUBBER, HANDLE | 1 | | | | |
| 7 | 6X4-42137-00 | INDICATOR, THROTTLE | 1 | | | | |
| 8 | 6X4-41291-00 | BUSHING | 1 | | | | |
| 9 | 6X4-44139-01 | COLLAR | 1 | | | | |
| 10 | 90152-05007 | SCREW, COUNTERSUNK | 1 | | | | |
| 11 | 91490-20010 | PIN. COTTER | 1 | | | | |
| 12 | 6X4-44177-00 | WASHER | 2 | | | | |
| 13 | 6X4-42128-00 | COLLAR, DISTANCE 1 | 1 | | | | |
| 14 | 90501-23215 | SPRING, COMPRESSION | 1 | | | | |
| 15 | 6X4-44188-00 | WASHER | 2 | | | | |
| 16 | 90386-08032 | BUSH | 1 | | | | |
| 17 | 63D-42126-00 | FRICTION, STEERING HANDLE GRIP | 1 | | | | |
| 18 | 6X4-48154-00 | KNOB, THROTTLE | 1 | | | | |
| 19 | 95380-06600 | NUT, HEXAGON | 1 | | | | |
| 20 | 91490-20010 | PIN. COTTER | 1 | | | | |
| 21 | 6X4-44100-01 | SHIFT LINK ASSY | 1 | | | | |
| 22 | 6X4-42115-00 | .SHAFT, STEERING HANDLE | 1 | | | | |
| 23 | 6X4-44102-00 | .SHIFT ASSIST ASSY. | 1 | | | | |
| 24 | 6X4-47731-01 | .GEAR, DRIVE | 1 | | | | |
| 25 | 6X4-44132-00 | .BUSHING | 1 | | | | |
| 26 | 6X4-14137-00 | .CLIP | 1 | | | | |
| 27 | 6X4-48261-00 | .ARM, THROTTLE | 1 | | | | |

6X4 TILLER HANDLE KIT (F25A)

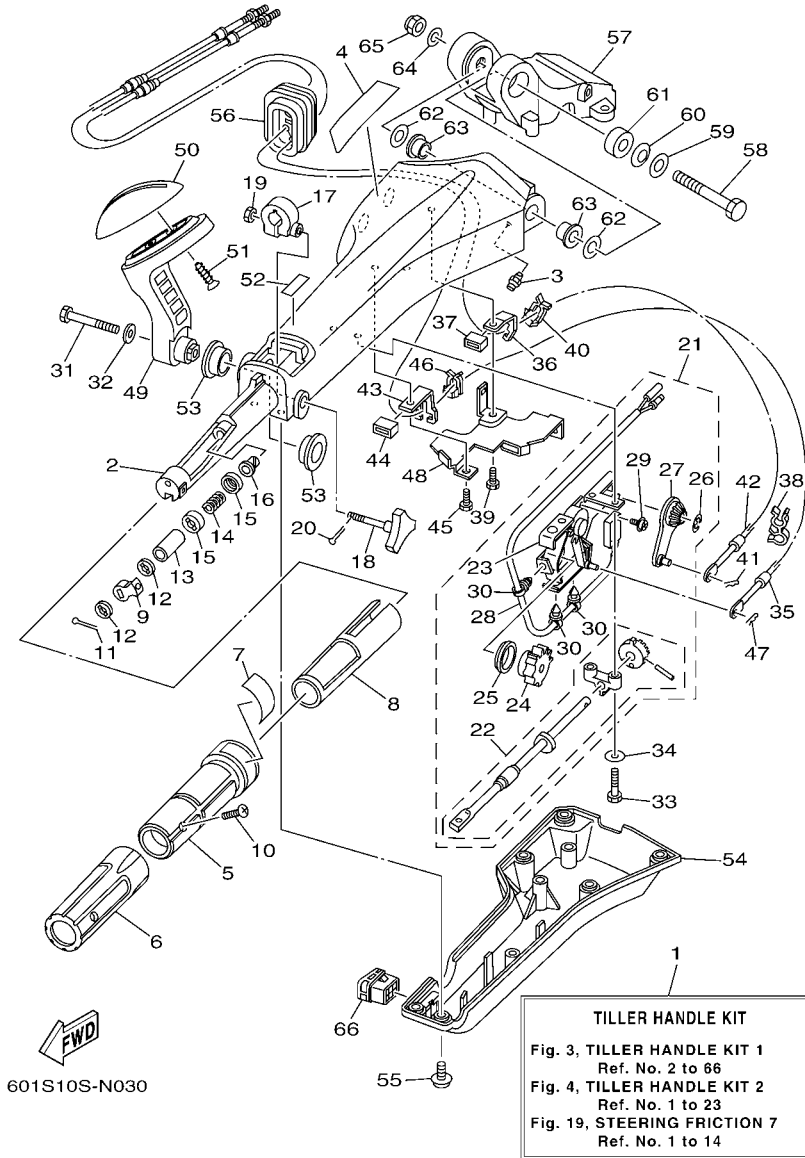


FIG. 3 TILLER HANDLE KIT 1

| REF. NO. | PART NO. | DESCRIPTION | 601S | | | | REMARKS |
|----------|-----------------|------------------------|------|--|--|--|---------|
| 28 | 6X4-82540-00 | .NEUTRAL SWITCH ASSY | 1 | | | | |
| 29 | 703-48129-00 | .SCREW 3 | 2 | | | | |
| 30 | 6X4-42821-00 | .BAND, CLAMP | 3 | | | | |
| 31 | 97095-08040 | BOLT | 1 | | | | |
| 32 | 92995-08600 | WASHER | 1 | | | | |
| 33 | 97095-06030 | BOLT | 2 | | | | |
| 34 | 92995-06600 | WASHER | 2 | | | | |
| 35 | 6H1-48321-21 | CABLE | 1 | | | | |
| 36 | 6X4-48538-00 | CLAMP, CABLE 1 | 1 | | | | |
| 37 | 6X4-26367-00 | PROTECTOR | 1 | | | | |
| 38 | 90464-09M42 | CLAMP | 1 | | | | |
| 39 | 97095-06014 | BOLT | 1 | | | | |
| 40 | 63D-48538-00 | CLAMP, CABLE 1 | 1 | | | | |
| 41 | 90468-10005 | CLIP | 1 | | | | |
| 42 | 6H3-48321-02 | CABLE | 1 | | | | |
| 43 | 6X4-48538-10 | CLAMP, CABLE 1 | 1 | | | | |
| 44 | 6X4-26367-00 | PROTECTOR | 1 | | | | |
| 45 | 97095-06014 | BOLT | 1 | | | | |
| 46 | 63D-48538-00 | CLAMP, CABLE 1 | 1 | | | | |
| 47 | 90468-10005 | CLIP | 1 | | | | |
| 48 | 6X4-42159-00 | STAY | 1 | | | | |
| 49 | 6X4-44159-00-4D | HANDLE, GEAR SHIFT | 1 | | | | |
| 50 | 6X4-44173-00 | LEVER, SHIFT CONTROL | 1 | | | | |
| 51 | 97780-60920 | SCREW, TAPPING | 2 | | | | |
| 52 | 6G8-44191-00 | INDICATOR, SHIFT | 1 | | | | |
| 53 | 90386-26MA3 | BUSH | 2 | | | | |
| 54 | 6X4-42131-01 | COVER, HANDLE STEERING | 1 | | | | |

6X4 TILLER HANDLE KIT (F25A)

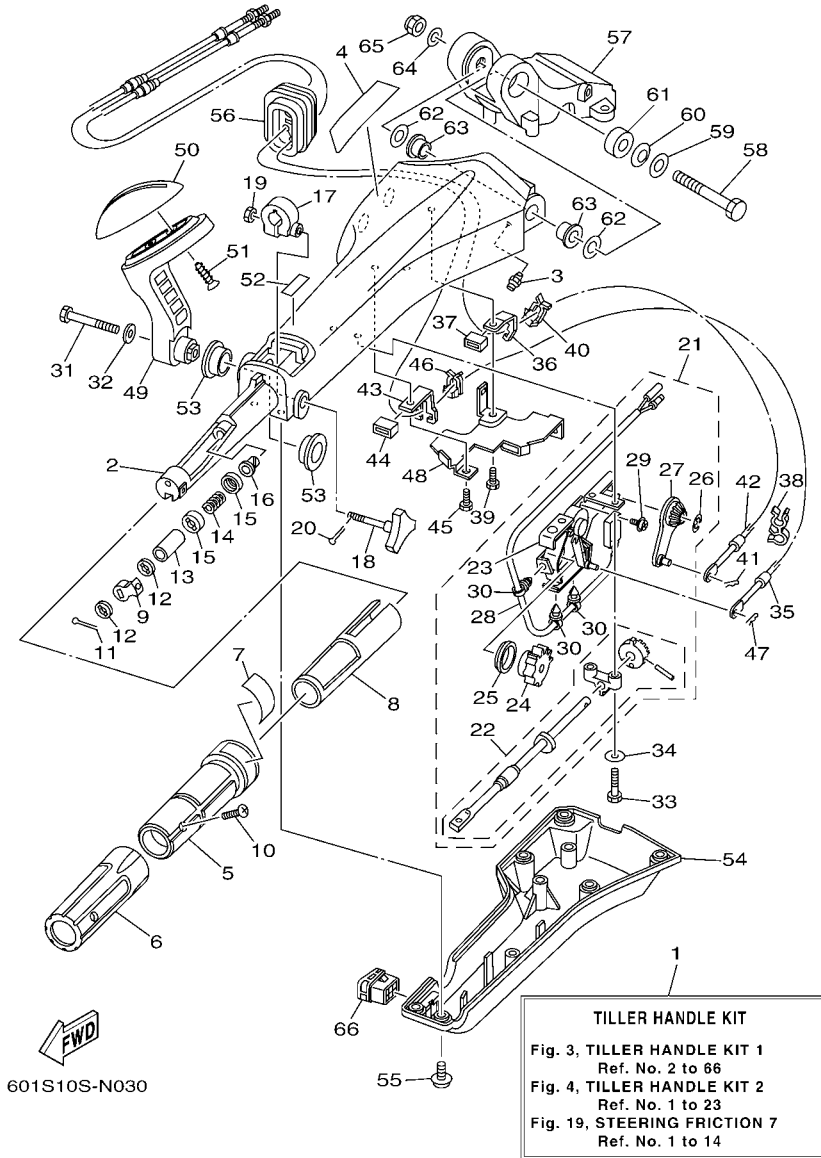
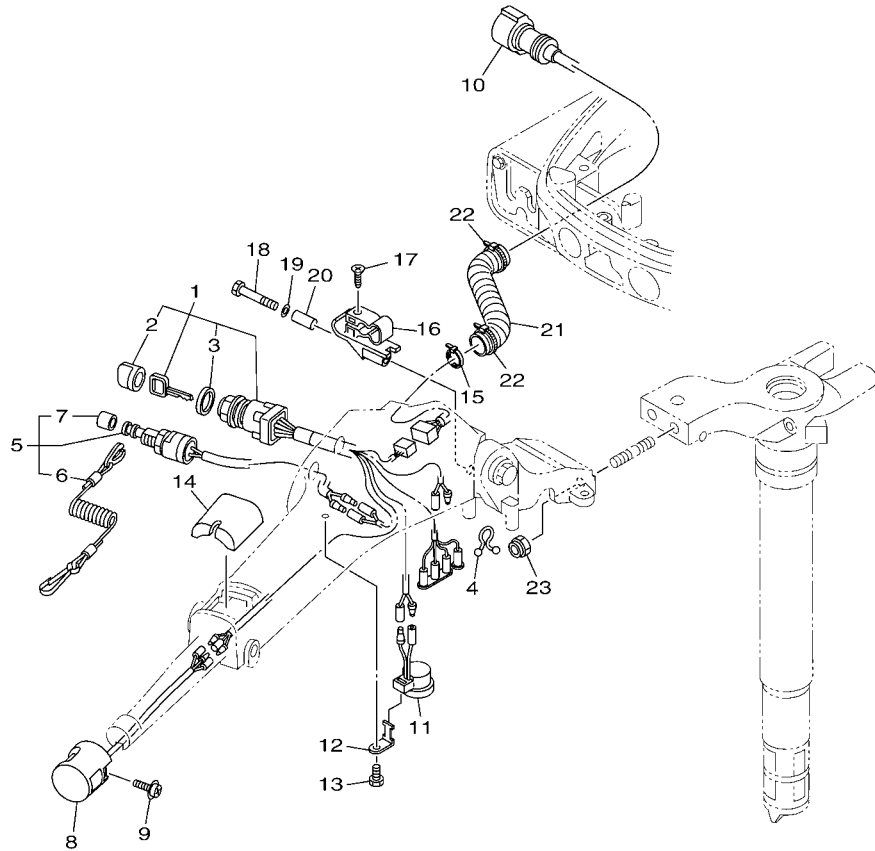


FIG. 3 TILLER HANDLE KIT 1

| REF. NO. | PART NO. | DESCRIPTION | 601S | | | | REMARKS |
|----------|-----------------|--------------------|------|--|--|--|---------|
| 55 | 97985-06216 | SCREW, WITH WASHER | 6 | | | | |
| 56 | 6X4-42725-01 | GROMMET | 1 | | | | |
| 57 | 65W-42121-11-4D | BRACKET | 1 | | | | |
| 58 | 90101-12014 | BOLT | 1 | | | | |
| 59 | 92990-12200 | WASHER, PLAIN | 1 | | | | |
| 60 | 90206-12M22 | WASHER, WAVE | 1 | | | | |
| 61 | 90387-12M02 | COLLAR | 1 | | | | |
| 62 | 90201-12035 | WASHER, PLATE | 2 | | | | |
| 63 | 90386-12003 | BUSH | 2 | | | | |
| 64 | 92990-12600 | WASHER, PLATE | 1 | | | | |
| 65 | 90185-12M12 | NUT, SELF-LOCKING | 1 | | | | |
| 66 | 6X4-42728-10 | CAP | 1 | | | | |
| | | | | | | | |
| | | | | | | | |
| | | | | | | | |
| | | | | | | | |
| | | | | | | | |
| | | | | | | | |
| | | | | | | | |
| | | | | | | | |
| | | | | | | | |
| | | | | | | | |
| | | | | | | | |
| | | | | | | | |
| | | | | | | | |

6X4 TILLER HANDLE KIT (F25A)

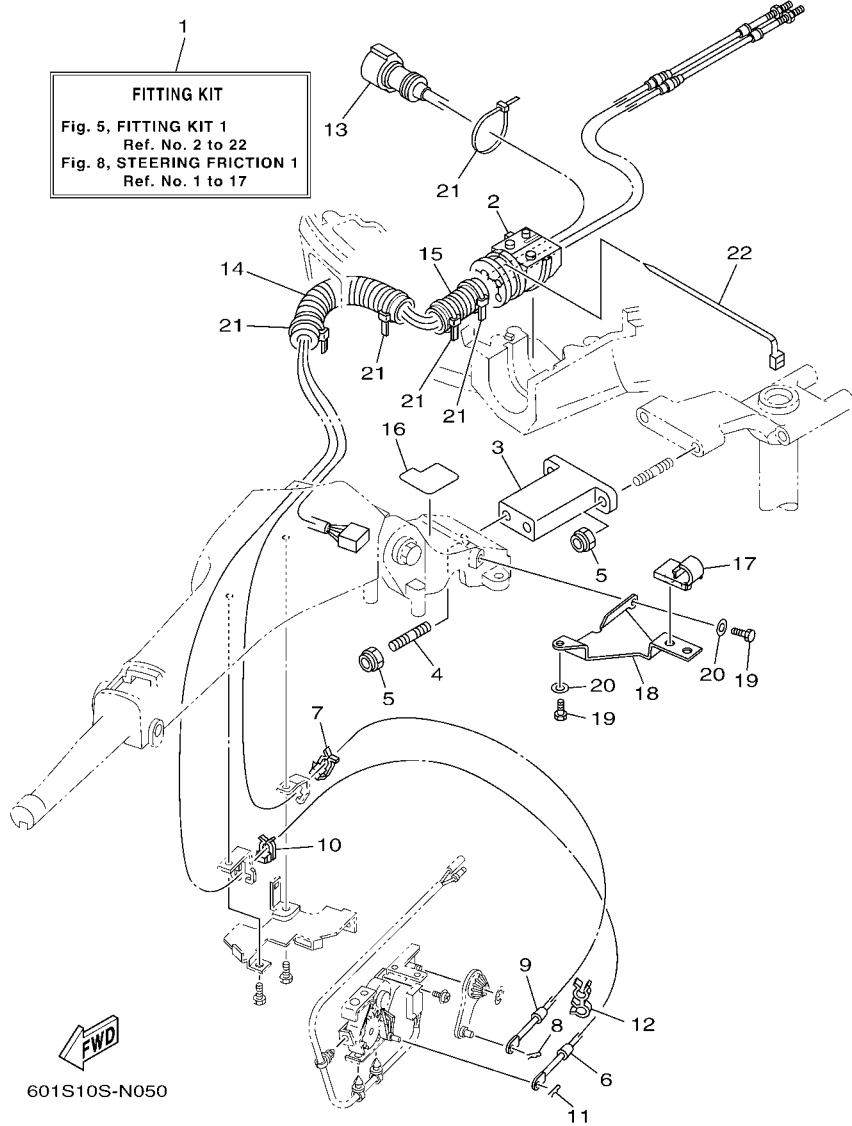



601S10S-M040

FIG. 4 TILLER HANDLE KIT 2

| REF. NO. | PART NO. | DESCRIPTION | 601S | | | | REMARKS |
|----------|--------------|------------------------------|------|--|--|--|---------|
| 1 | 6X4-82510-01 | MAIN SWITCH ASSY | 1 | | | | |
| 2 | 676-82577-01 | .CAP, KEY | 1 | | | | |
| 3 | 703-82532-00 | .CAP | 1 | | | | |
| 4 | 90464-08M07 | CLAMP | 1 | | | | |
| 5 | 69W-82575-00 | ENGINE STOP SWITCH ASSY | 1 | | | | |
| 6 | 682-82556-00 | .LANYARD, STOP SWITCH | 1 | | | | |
| 7 | 689-8257Y-00 | .CAP | 1 | | | | |
| 8 | 6X4-82563-00 | TRIM & TILT SWITCH ASSY | 1 | | | | |
| 9 | 97980-06216 | SCREW, WITH WASHER | 1 | | | | |
| 10 | 6X4-82586-10 | EXT., WIRE HARNESS (L:950MM) | 1 | | | | |
| 11 | 6X4-83383-00 | BUZZER | 1 | | | | |
| 12 | 6X4-83386-00 | STAY, BUZZER | 1 | | | | |
| 13 | 97095-06014 | BOLT | 1 | | | | |
| 14 | 6X4-81942-01 | COVER | 1 | | | | |
| 15 | 90465-13M36 | CLAMP | 1 | | | | |
| 16 | 62Y-82361-00 | CLAMP, CORD | 1 | | | | |
| 17 | 90161-06M03 | SCREW, TAPPING | 1 | | | | |
| 18 | 97095-06035 | BOLT | 1 | | | | |
| 19 | 92995-06600 | WASHER | 1 | | | | |
| 20 | 90387-06M26 | COLLAR | 1 | | | | |
| 21 | 90447-22006 | TUBE | 1 | | | | |
| 22 | 90465-13M24 | CLAMP | 2 | | | | |
| 23 | 90185-10027 | NUT, SELF-LOCKING | 2 | | | | |

6X4 TILLER HANDLE FITTING KIT (F115A)

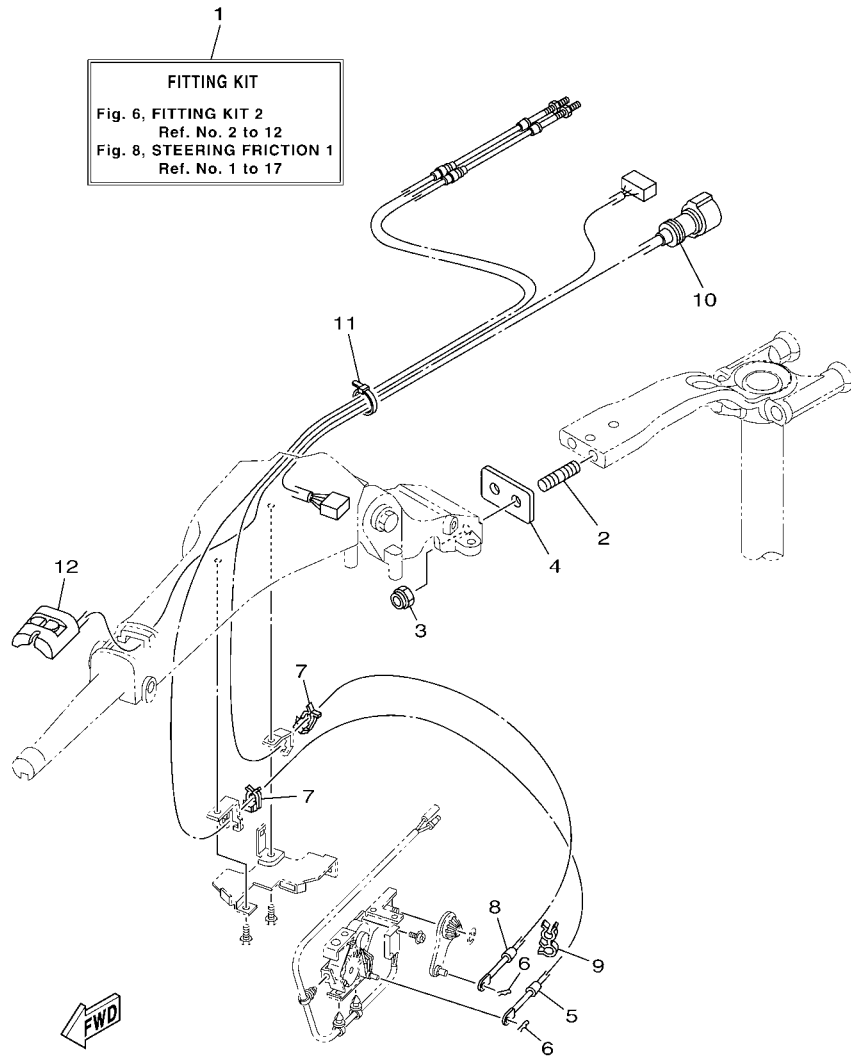


601S10S-N050

FIG. 5 FITTING KIT 1

| REF. NO. | PART NO. | DESCRIPTION | 601S | | | | REMARKS |
|----------|-----------------|------------------------------|------|--|--|--|---------|
| 1 | 6X4-42102-01 | FITTING KIT | 1 | | | | LM |
| 2 | 68V-42725-10 | GROMMET | 1 | | | | |
| 3 | 6X4-42121-11-8D | BRACKET | 1 | | | | |
| 4 | 90116-10062 | BOLT, STUD | 2 | | | | |
| 5 | 90185-10027 | NUT, SELF-LOCKING | 4 | | | | |
| 6 | 67G-48321-20 | CABLE | 1 | | | | |
| 7 | 63D-48538-00 | CLAMP, CABLE 1 | 1 | | | | |
| 8 | 90468-10005 | CLIP | 1 | | | | |
| 9 | 67G-26301-10 | THROTTLE CABLE ASSY | 1 | | | | |
| 10 | 63D-48538-00 | CLAMP, CABLE 1 | 1 | | | | |
| 11 | 90468-10005 | CLIP | 1 | | | | |
| 12 | 90464-09M42 | CLAMP | 1 | | | | |
| 13 | 6X4-82586-20 | EXT., WIRE HARNESS (L:1.25M) | 1 | | | | |
| 14 | 90447-22007 | TUBE | 1 | | | | |
| 15 | 6G5-83557-00 | TUBE | 1 | | | | |
| 16 | 6X4-42735-00 | PROTECTOR | 1 | | | | |
| 17 | 63D-24367-00 | CLAMP, FUEL PIPE 2 | 1 | | | | |
| 18 | 6X4-24364-00 | STAY | 1 | | | | |
| 19 | 97095-06016 | BOLT | 2 | | | | |
| 20 | 92995-06600 | WASHER | 2 | | | | |
| 21 | 90465-13M24 | CLAMP | 5 | | | | |
| 22 | 90465-13M30 | CLAMP | 1 | | | | |

6X4 TILLER HANDLE FITTING KIT (F115B)



601S10S-N060

FIG. 6 FITTING KIT 2

| REF. NO. | PART NO. | DESCRIPTION | 601S | | | | REMARKS |
|----------|--------------|------------------------------|------|--|--|--|---------|
| 1 | 6X4-42102-C0 | FITTING KIT | 1 | | | | LM |
| 2 | 90116-10063 | BOLT, STUD | 2 | | | | |
| 3 | 90185-10027 | NUT, SELF-LOCKING | 2 | | | | |
| 4 | 6EK-42121-00 | BRACKET | 1 | | | | |
| 5 | 6EK-48321-00 | CABLE | 1 | | | | |
| 6 | 90468-10005 | CLIP | 2 | | | | |
| 7 | 63D-48538-00 | CLAMP, CABLE 1 | 2 | | | | |
| 8 | 6EK-26301-00 | THROTTLE CABLE ASSY | 1 | | | | |
| 9 | 90464-09M42 | CLAMP | 1 | | | | |
| 10 | 6X4-82586-10 | EXT., WIRE HARNESS (L:950MM) | 1 | | | | |
| 11 | 90465-13M24 | CLAMP | 1 | | | | |
| 12 | 6X4-81860-00 | SWITCH ASSY | 1 | | | | |

6X4 TILLER HANDLE FITTING KIT (F75A,F90A)

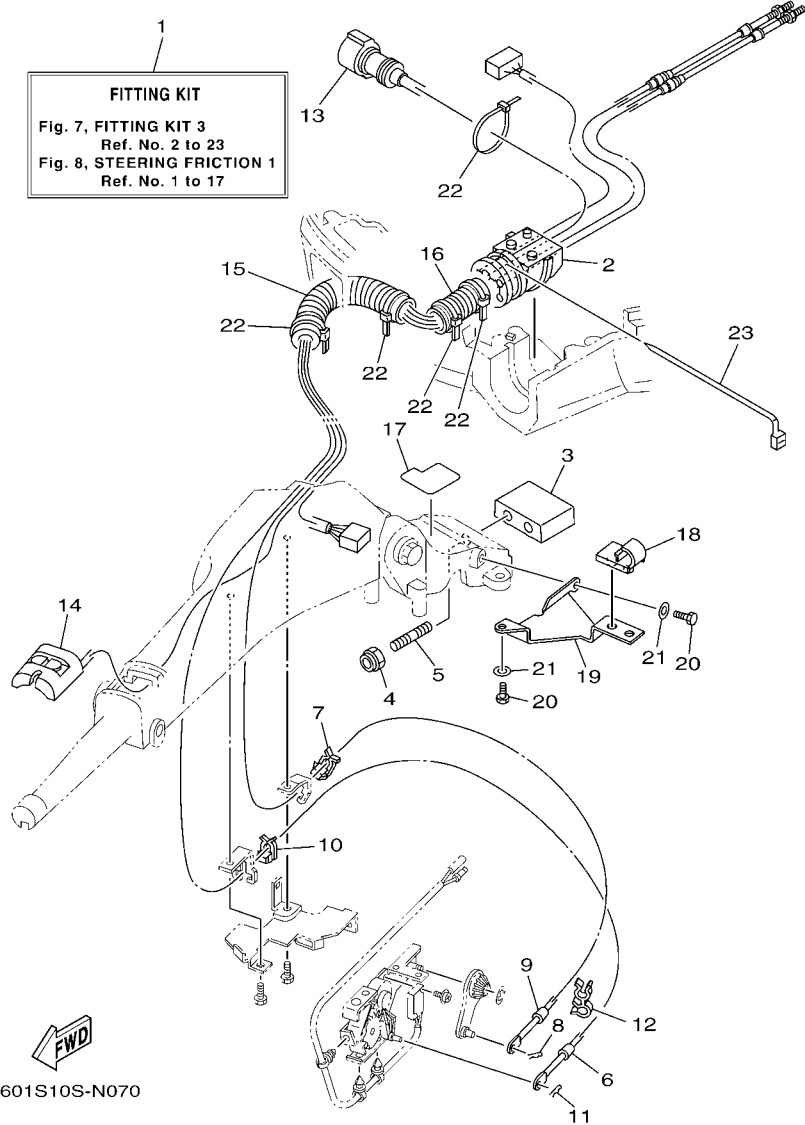
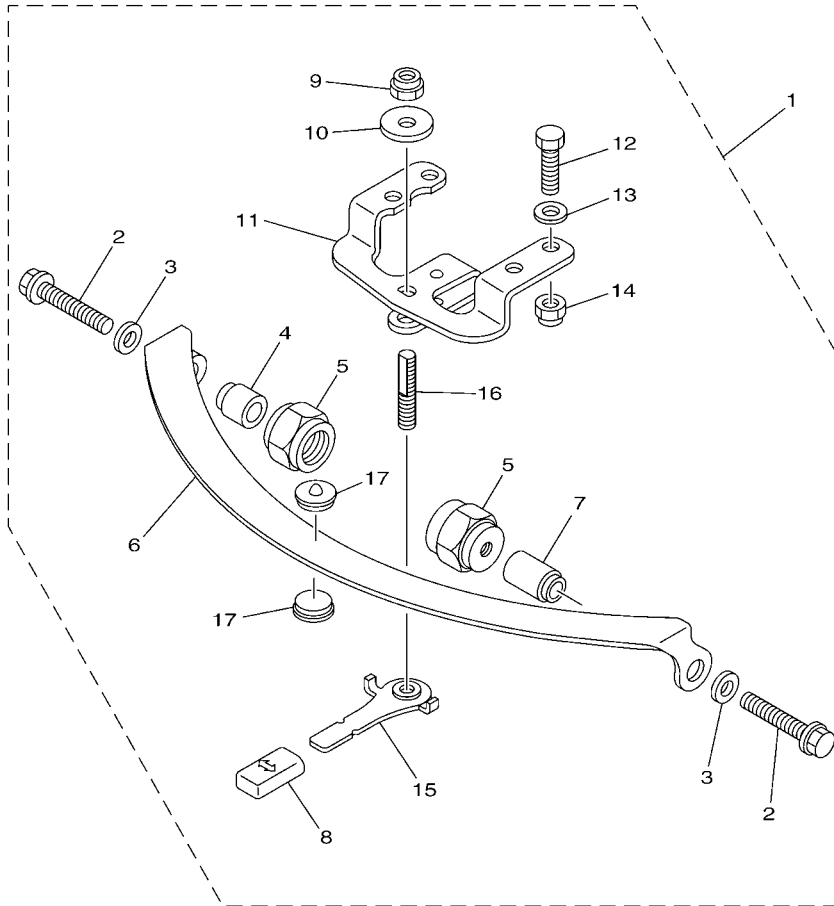


FIG. 7 FITTING KIT 3

| REF. NO. | PART NO. | DESCRIPTION | 601S | | | | REMARKS |
|----------|-----------------|------------------------------|------|--|--|--|---------|
| 1 | 6X4-42102-11 | FITTING KIT | 1 | | | | LM |
| 2 | 68V-42725-10 | GROMMET | 1 | | | | |
| 3 | 6X4-42121-00-8D | BRACKET | 1 | | | | |
| 4 | 90185-10027 | NUT, SELF-LOCKING | 2 | | | | |
| 5 | 90116-10031 | BOLT, STUD | 2 | | | | |
| 6 | 67G-48321-20 | CABLE | 1 | | | | |
| 7 | 63D-48538-00 | CLAMP, CABLE 1 | 1 | | | | |
| 8 | 90468-10005 | CLIP | 1 | | | | |
| 9 | 67G-26301-10 | THROTTLE CABLE ASSY | 1 | | | | |
| 10 | 63D-48538-00 | CLAMP, CABLE 1 | 1 | | | | |
| 11 | 90468-10005 | CLIP | 1 | | | | |
| 12 | 90464-09M42 | CLAMP | 1 | | | | |
| 13 | 6X4-82586-20 | EXT., WIRE HARNESS (L:1.25M) | 1 | | | | |
| 14 | 6X4-81860-00 | SWITCH ASSY | 1 | | | | |
| 15 | 90447-22007 | TUBE | 1 | | | | |
| 16 | 6K3-83557-00 | TUBE | 1 | | | | |
| 17 | 6X4-42735-00 | PROTECTOR | 1 | | | | |
| 18 | 63D-24367-00 | CLAMP, FUEL PIPE 2 | 1 | | | | |
| 19 | 6X4-24364-00 | STAY | 1 | | | | |
| 20 | 97095-06016 | BOLT | 2 | | | | |
| 21 | 92995-06600 | WASHER | 2 | | | | |
| 22 | 90465-13M24 | CLAMP | 5 | | | | |
| 23 | 90465-13M30 | CLAMP | 1 | | | | |

6X4 TILLER HANDLE FITTING KIT
STEERING FRICTION (F75A,F90A,F115A,F115B)



601S10S-N080

FIG. 8 STEERING FRICTION 1

| REF. NO. | PART NO. | DESCRIPTION | 601S | | | | REMARKS |
|----------|--------------|------------------------|------|--|--|--|---------|
| 1 | 67G-42508-10 | STEERING FRICTION ASSY | 1 | | | | |
| 2 | 90119-08M74 | .BOLT, WITH WASHER | 2 | | | | |
| 3 | 90201-08M01 | .WASHER, PLATE | 2 | | | | |
| 4 | 67G-42541-00 | .PIPE 1 | 1 | | | | |
| 5 | 67G-42546-00 | .NUT | 2 | | | | |
| 6 | 63D-42527-00 | .PLATE, FRICTION | 1 | | | | |
| 7 | 67G-42541-10 | .PIPE 1 | 1 | | | | |
| 8 | 682-43318-01 | .COVER | 1 | | | | |
| 9 | 90185-10M14 | .NUT, SELF-LOCKING | 1 | | | | |
| 10 | 90201-10M76 | .WASHER, PLATE | 1 | | | | |
| 11 | 6X4-42526-00 | .PLATE, FRICTION | 1 | | | | |
| 12 | 97095-08025 | .BOLT | 2 | | | | |
| 13 | 92995-08600 | .WASHER | 2 | | | | |
| 14 | 90185-08057 | .NUT, SELF-LOCKING | 2 | | | | |
| 15 | 67G-42561-00 | .KNOB, STEERING LOCK | 1 | | | | |
| 16 | 67G-42562-00 | .SHAFT, STEERING LOCK | 1 | | | | |
| 17 | 63D-42528-00 | .PLATE, FRICTION | 2 | | | | |

**6X4 TILLER HANDLE FITTING KIT
(F50B, T50B, F60B, T60B, F70A)**

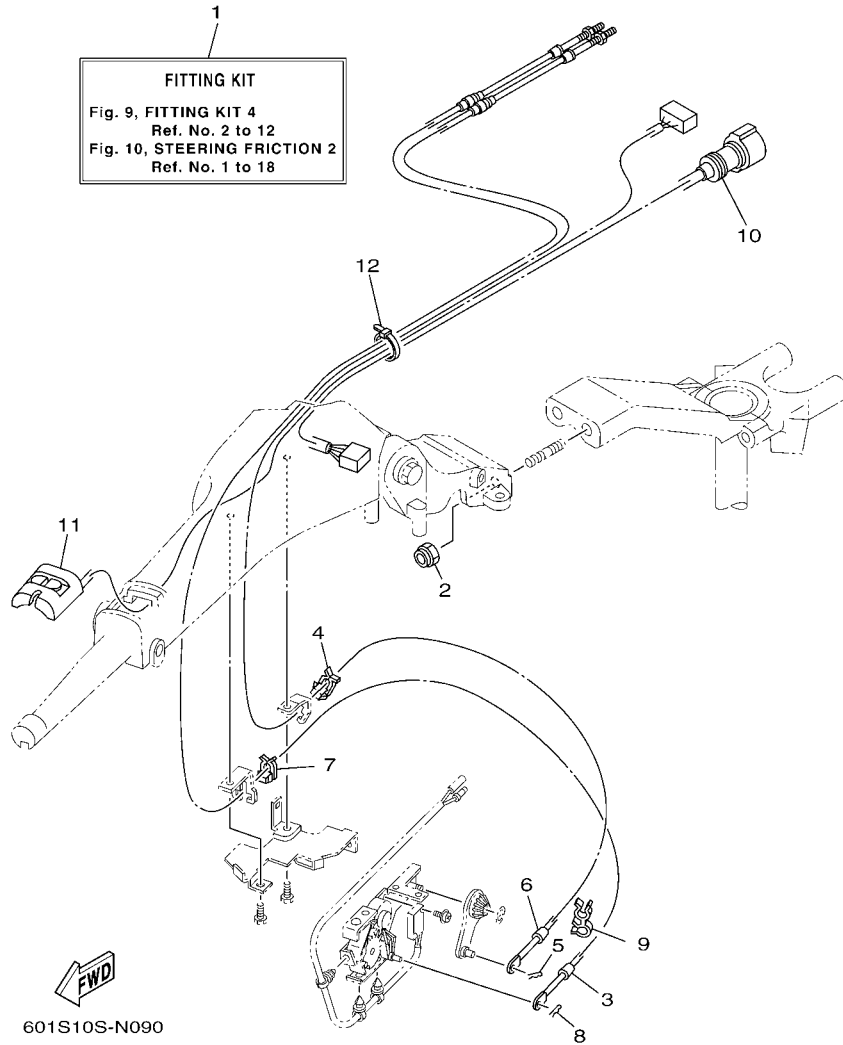
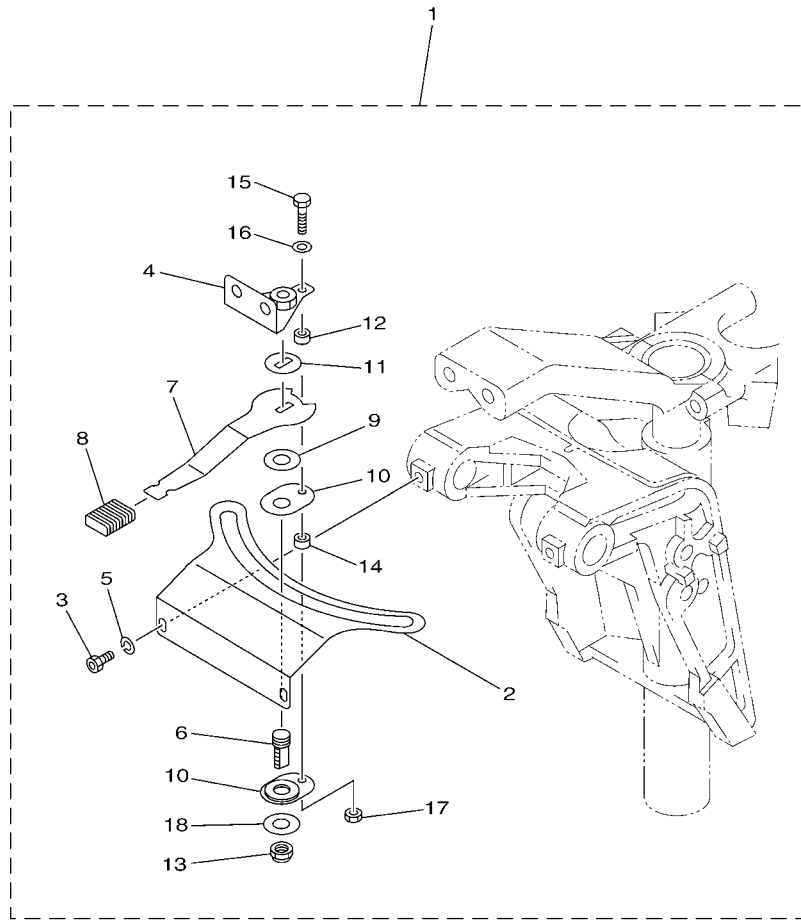


FIG. 9 FITTING KIT 4

| REF. NO. | PART NO. | DESCRIPTION | 601S | | | | REMARKS |
|----------|--------------|------------------------------|------|--|--|--|---------|
| 1 | 6X4-42102-23 | FITTING KIT | 1 | | | | LM |
| 2 | 90185-10027 | NUT, SELF-LOCKING | 2 | | | | |
| 3 | 67C-48321-11 | CABLE | 1 | | | | |
| 4 | 63D-48538-00 | CLAMP, CABLE 1 | 1 | | | | |
| 5 | 90468-10005 | CLIP | 1 | | | | |
| 6 | 69W-26301-00 | THROTTLE CABLE ASSY | 1 | | | | |
| 7 | 63D-48538-00 | CLAMP, CABLE 1 | 1 | | | | |
| 8 | 90468-10005 | CLIP | 1 | | | | |
| 9 | 90464-09M42 | CLAMP | 1 | | | | |
| 10 | 6X4-82586-10 | EXT., WIRE HARNESS (L:950MM) | 1 | | | | |
| 11 | 6X4-81860-00 | SWITCH ASSY | 1 | | | | |
| 12 | 90465-13M36 | CLAMP | 1 | | | | |
| | | | | | | | |
| | | | | | | | |
| | | | | | | | |
| | | | | | | | |
| | | | | | | | |
| | | | | | | | |
| | | | | | | | |

6X4 TILLER HANDLE FITTING KIT
STEERING FRICTION (F50B,T50B,F60B,T60B,F70A)

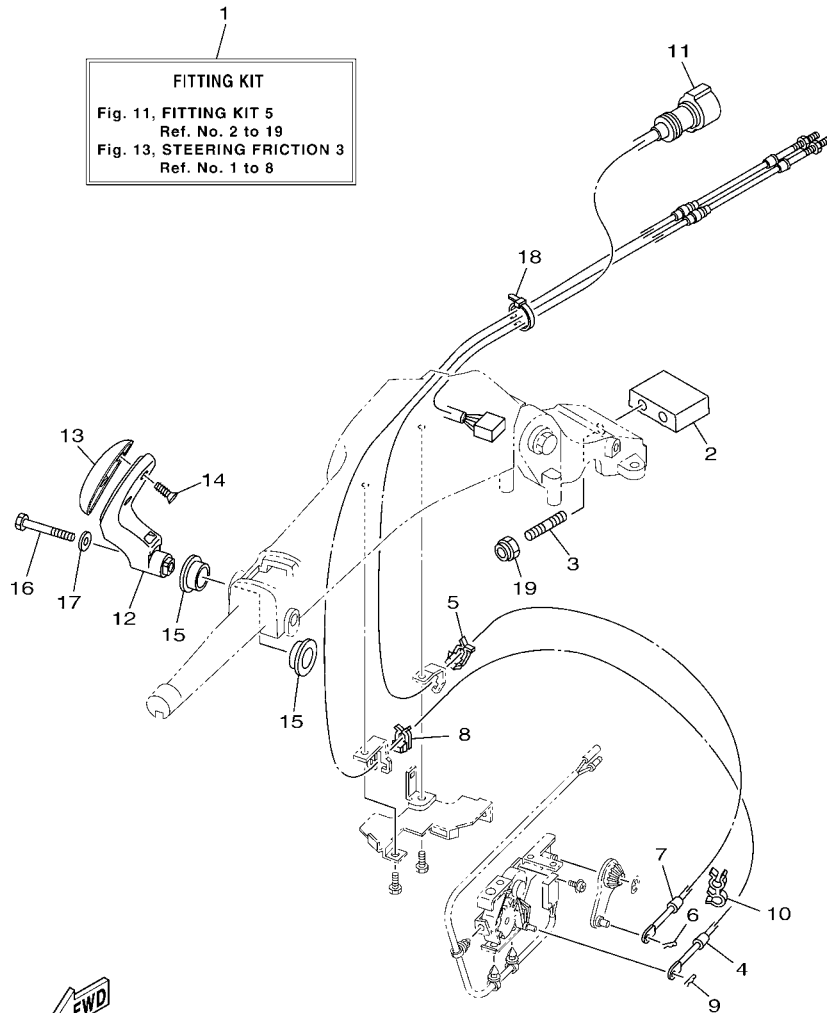


601S10S-M090

FIG. 10 STEERING FRICTION 2

| REF. NO. | PART NO. | DESCRIPTION | 601S | | | | REMARKS |
|----------|--------------|------------------------|------|--|--|--|---------|
| 1 | 6C5-42508-01 | STEERING FRICTION ASSY | 1 | | | | |
| 2 | 6C5-42527-00 | .PLATE, FRICTION | 1 | | | | |
| 3 | 90109-06M88 | .BOLT | 2 | | | | |
| 4 | 67C-42525-00 | .PLATE, FRICTION | 1 | | | | |
| 5 | 92990-06100 | .WASHER, SPRING | 2 | | | | |
| 6 | 67C-42562-00 | .SHAFT, STEERING LOCK | 1 | | | | |
| 7 | 67C-42561-00 | .KNOB, STEERING LOCK | 1 | | | | |
| 8 | 689-43633-00 | .COVER, TILT LEVER | 1 | | | | |
| 9 | 90202-10M56 | .WASHER, PLATE | 1 | | | | |
| 10 | 65W-42528-00 | .PLATE, FRICTION | 2 | | | | |
| 11 | 90209-10M26 | .WASHER | 1 | | | | |
| 12 | 90387-05053 | .COLLAR | 1 | | | | |
| 13 | 90185-10M14 | .NUT, SELF-LOCKING | 1 | | | | |
| 14 | 90387-05054 | .COLLAR | 1 | | | | |
| 15 | 97095-05020 | .BOLT | 1 | | | | |
| 16 | 92995-05600 | .WASHER | 1 | | | | |
| 17 | 95380-05600 | .NUT | 1 | | | | |
| 18 | 90201-106M5 | .WASHER, PLATE | 1 | | | | |

6X4 TILLER HANDLE FITTING KIT (90)

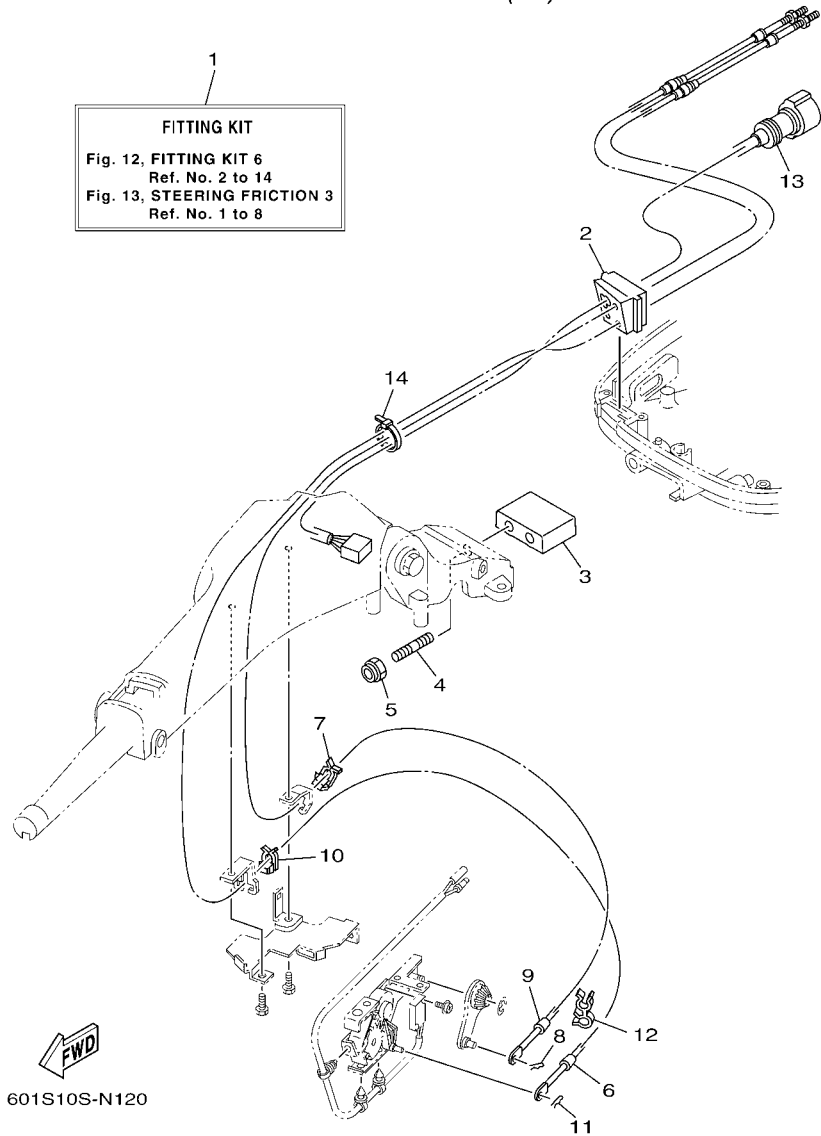


601S10S-N110

FIG. 11 FITTING KIT 5

| REF. NO. | PART NO. | DESCRIPTION | 601S | | | | REMARKS |
|----------|-----------------|-------------------------|------|--|--|--|---------|
| 1 | 6X4-42102-41 | FITTING KIT | 1 | | | | LM |
| 2 | 6X4-42121-00-8D | BRACKET | 1 | | | | |
| 3 | 90116-10031 | BOLT, STUD | 2 | | | | |
| 4 | 6H1-48321-11 | CABLE | 1 | | | | |
| 5 | 63D-48538-00 | CLAMP, CABLE 1 | 1 | | | | |
| 6 | 90468-10005 | CLIP | 1 | | | | |
| 7 | 6H1-26301-01 | THROTTLE CABLE ASSY | 1 | | | | |
| 8 | 63D-48538-00 | CLAMP, CABLE 1 | 1 | | | | |
| 9 | 90468-10005 | CLIP | 1 | | | | |
| 10 | 90464-09M42 | CLAMP | 1 | | | | |
| 11 | 6X4-82586-30 | EXTENSION, WIRE HARNESS | 1 | | | | |
| 12 | 6X4-44159-10-8D | HANDLE, GEAR SHIFT | 1 | | | | |
| 13 | 6X4-44173-00 | LEVER, SHIFT CONTROL | 1 | | | | |
| 14 | 97780-60920 | SCREW, TAPPING | 2 | | | | |
| 15 | 90386-26MA3 | BUSH | 1 | | | | |
| 16 | 97095-08040 | BOLT | 1 | | | | |
| 17 | 92995-08600 | WASHER | 1 | | | | |
| 18 | 90465-13M36 | CLAMP | 1 | | | | |
| 19 | 90185-10027 | NUT, SELF-LOCKING | 2 | | | | |

6X4 TILLER HANDLE FITTING KIT (70)

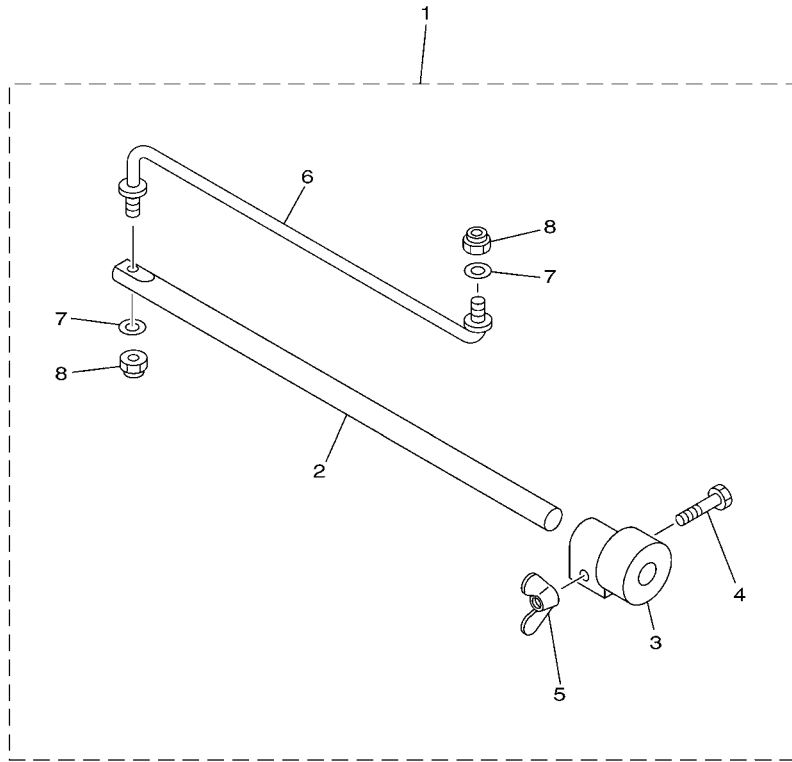


601S10S-N120

FIG. 12 FITTING KIT 6

| REF. NO. | PART NO. | DESCRIPTION | 601S | | | | REMARKS |
|----------|-----------------|-------------------------|------|--|--|--|---------|
| 1 | 6X4-42102-52 | FITTING KIT | 1 | | | | LM |
| 2 | 6H3-42725-30 | GROMMET | 1 | | | | |
| 3 | 6X4-42121-00-8D | BRACKET | 1 | | | | |
| 4 | 90116-10031 | BOLT, STUD | 2 | | | | |
| 5 | 90185-10027 | NUT, SELF-LOCKING | 2 | | | | |
| 6 | 6H3-48321-11 | CABLE | 1 | | | | |
| 7 | 63D-48538-00 | CLAMP, CABLE 1 | 1 | | | | |
| 8 | 90468-10005 | CLIP | 1 | | | | |
| 9 | 6H3-26301-01 | THROTTLE CABLE ASSY | 1 | | | | |
| 10 | 63D-48538-00 | CLAMP, CABLE 1 | 1 | | | | |
| 11 | 90468-10005 | CLIP | 1 | | | | |
| 12 | 90464-09M42 | CLAMP | 1 | | | | |
| 13 | 6X4-82586-30 | EXTENSION, WIRE HARNESS | 1 | | | | |
| 14 | 90465-13M36 | CLAMP | 1 | | | | |

6X4 TILLER HANDLE FITTING KIT
STEERING FRICTION (70,90)



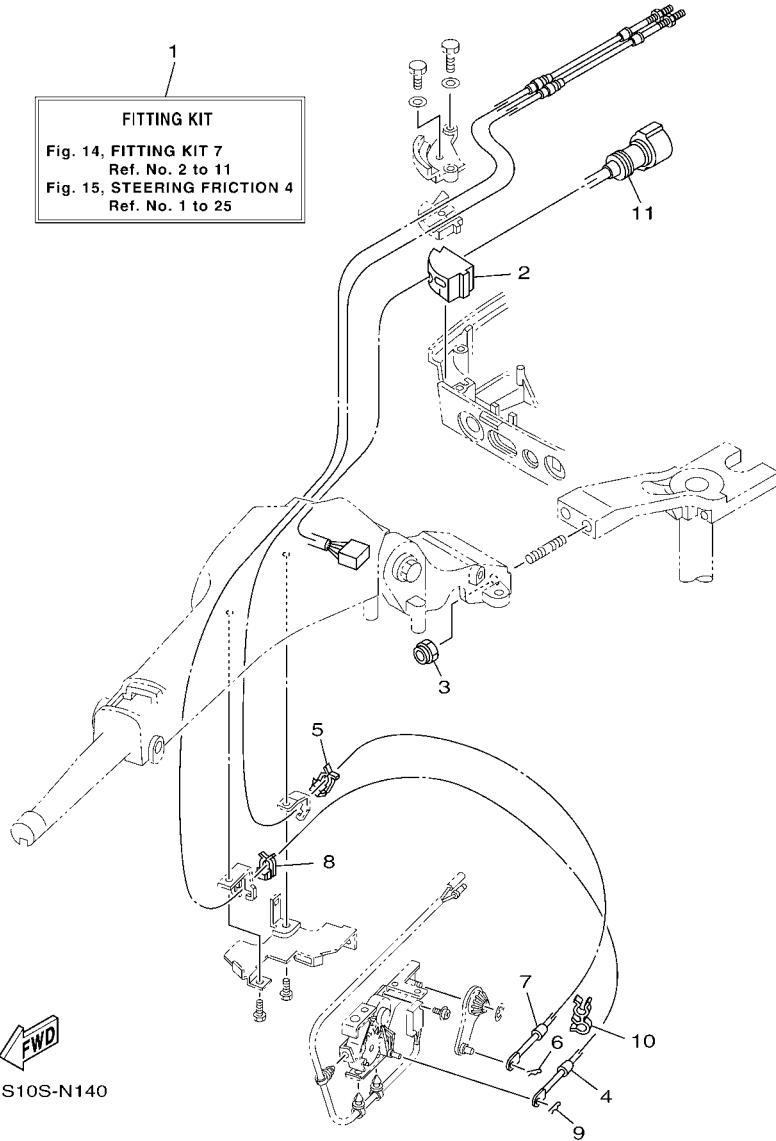
6011100-G700

FIG. 13 STEERING FRICTION 3

| REF. NO. | PART NO. | DESCRIPTION | QTY | REMARKS |
|----------|--------------|------------------------|-----|---------|
| 1 | 692-42508-01 | STEERING FRICTION ASSY | 1 | |
| 2 | 663-42518-00 | .SHAFT, FRICTION | 1 | |
| 3 | 663-42528-00 | .PLATE, FRICTION | 1 | |
| 4 | 97080-06035 | .BOLT | 1 | |
| 5 | 90175-06003 | .NUT, WING | 1 | |
| 6 | 692-42515-01 | .ROD, STEERING LINK | 1 | |
| 7 | 92990-08600 | .WASHER, PLATE | 2 | |
| 8 | 90185-08057 | .NUT, SELF-LOCKING | 2 | |

6X4 TILLER HANDLE FITTING KIT (50)

1
FITTING KIT
 Fig. 14, FITTING KIT 7
 Ref. No. 2 to 11
 Fig. 15, STEERING FRICTION 4
 Ref. No. 1 to 25



601S10S-N140

FIG. 14 FITTING KIT 7

| REF. NO. | PART NO. | DESCRIPTION | 601S | | | | REMARKS |
|----------|--------------|------------------------------|------|--|--|--|---------|
| 1 | 6X4-42102-63 | FITTING KIT | 1 | | | | LM |
| 2 | 6H4-42724-20 | GROMMET | 1 | | | | |
| 3 | 90185-10027 | NUT, SELF-LOCKING | 2 | | | | |
| 4 | 63D-48321-11 | CABLE | 1 | | | | |
| 5 | 63D-48538-00 | CLAMP, CABLE 1 | 1 | | | | |
| 6 | 90468-10005 | CLIP | 1 | | | | |
| 7 | 63D-26301-01 | THROTTLE CABLE ASSY | 1 | | | | |
| 8 | 63D-48538-00 | CLAMP, CABLE 1 | 1 | | | | |
| 9 | 90468-10005 | CLIP | 1 | | | | |
| 10 | 90464-09M42 | CLAMP | 1 | | | | |
| 11 | 6X4-82586-00 | EXT., WIRE HARNESS (L:700MM) | 1 | | | | |

6X4 TILLER HANDLE FITTING KIT
STEERING FRICTION (50)

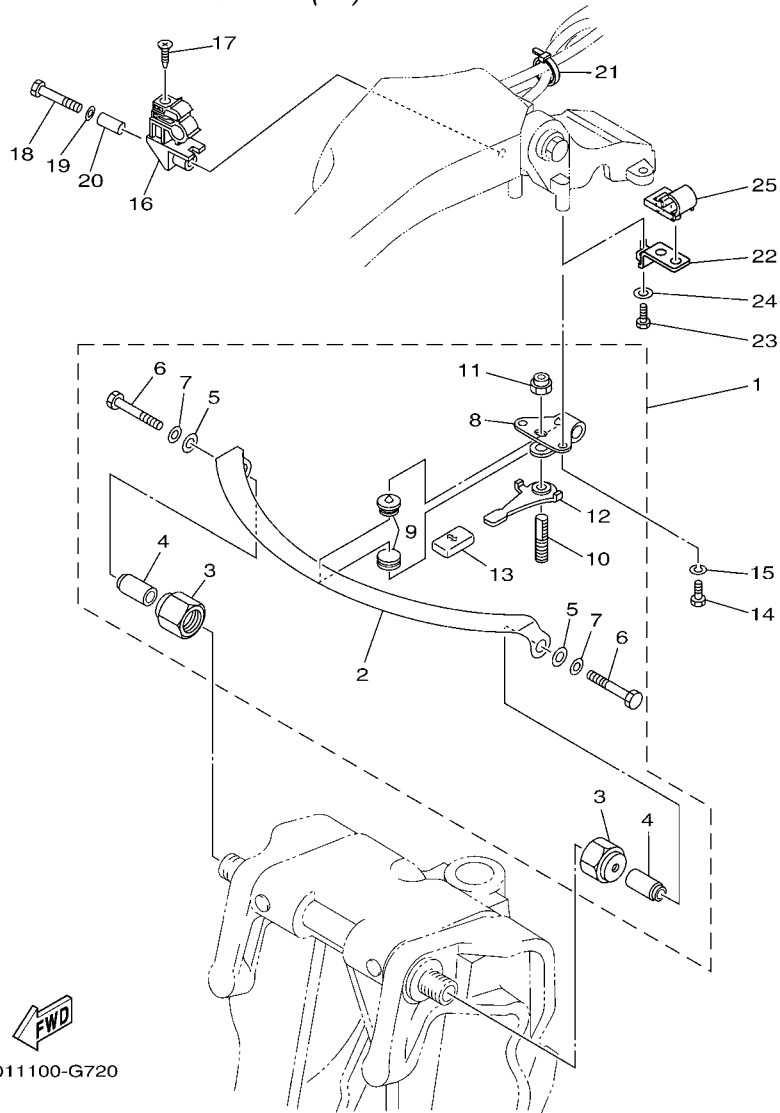


FIG. 15 STEERING FRICTION 4

| REF. NO. | PART NO. | DESCRIPTION | QTY | REMARKS |
|----------|--------------|------------------------|-----|---------|
| 1 | 63D-42508-00 | STEERING FRICTION ASSY | 1 | |
| 2 | 63D-42527-00 | .PLATE, FRICTION | 1 | |
| 3 | 63D-42546-00 | .NUT | 2 | |
| 4 | 63D-42541-00 | .PIPE 1 | 2 | |
| 5 | 90201-08M01 | .WASHER, PLATE | 2 | |
| 6 | 97095-08050 | .BOLT | 2 | |
| 7 | 92990-08600 | .WASHER, PLATE | 2 | |
| 8 | 63D-42526-00 | .PLATE, FRICTION | 1 | |
| 9 | 63D-42528-00 | .PLATE, FRICTION | 2 | |
| 10 | 63D-42562-00 | .SHAFT, STEERING LOCK | 1 | |
| 11 | 90185-10M01 | .NUT, SELF-LOCKING | 1 | |
| 12 | 63D-42561-00 | .KNOB, STEERING LOCK | 1 | |
| 13 | 682-43318-01 | .COVER | 1 | |
| 14 | 97095-06016 | BOLT | 2 | |
| 15 | 92995-06100 | WASHER, SPRING | 2 | |
| 16 | 63D-82361-00 | CLAMP, CORD | 1 | |
| 17 | 90161-06M00 | SCREW, TAPPING | 1 | |
| 18 | 97095-06035 | BOLT | 1 | |
| 19 | 92995-06600 | WASHER | 1 | |
| 20 | 90387-06M26 | COLLAR | 1 | |
| 21 | 90465-13M36 | CLAMP | 1 | |
| 22 | 63D-24364-10 | STAY | 1 | |
| 23 | 97095-06016 | BOLT | 1 | |
| 24 | 92995-06600 | WASHER | 1 | |
| 25 | 63D-24367-00 | CLAMP, FUEL PIPE 2 | 1 | |

6X4 TILLER HANDLE FITTING KIT (F40A-FI)

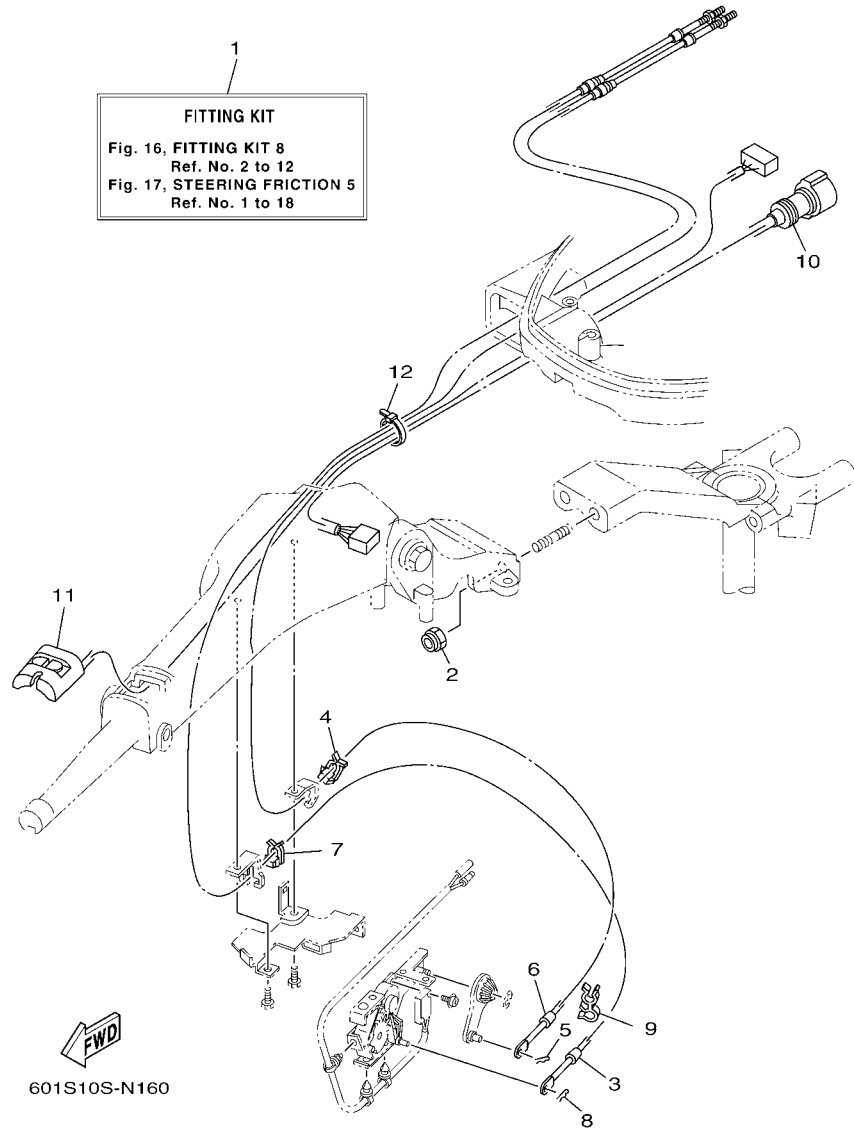
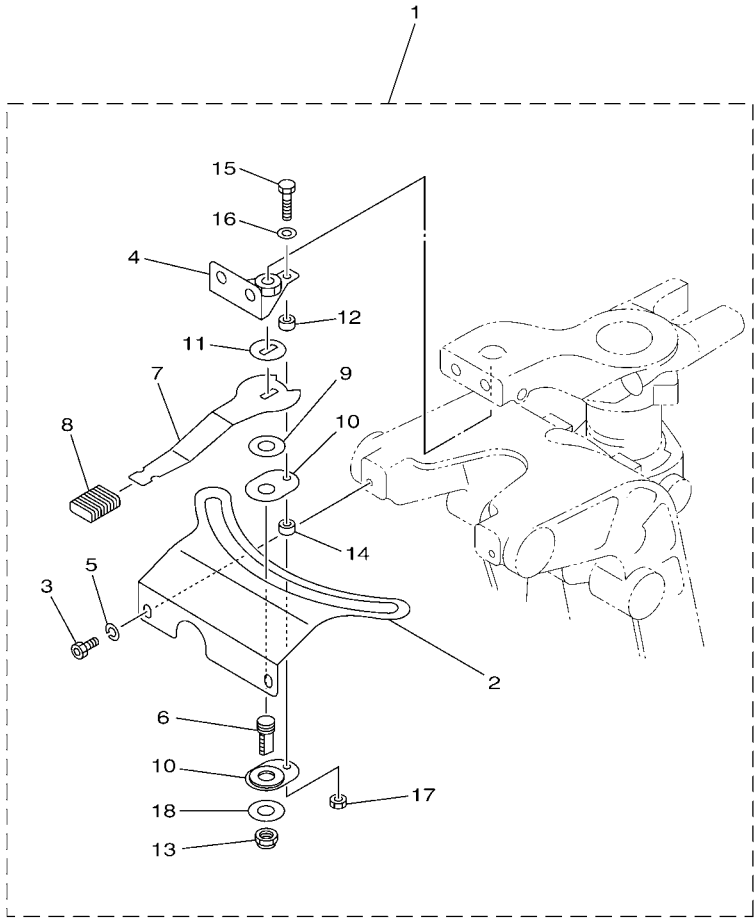


FIG. 16 FITTING KIT 8

| REF. NO. | PART NO. | DESCRIPTION | 601S | | | | REMARKS |
|----------|--------------|------------------------------|------|--|--|--|---------|
| 1 | 6X4-42102-71 | FITTING KIT | 1 | | | | LM |
| 2 | 90185-10027 | NUT, SELF-LOCKING | 2 | | | | |
| 3 | 67C-48321-11 | CABLE | 1 | | | | |
| 4 | 63D-48538-00 | CLAMP, CABLE 1 | 1 | | | | |
| 5 | 90468-10005 | CLIP | 1 | | | | |
| 6 | 69W-26301-00 | THROTTLE CABLE ASSY | 1 | | | | |
| 7 | 63D-48538-00 | CLAMP, CABLE 1 | 1 | | | | |
| 8 | 90468-10005 | CLIP | 1 | | | | |
| 9 | 90464-09M42 | CLAMP | 1 | | | | |
| 10 | 6X4-82586-10 | EXT., WIRE HARNESS (L:950MM) | 1 | | | | |
| 11 | 6X4-81860-00 | SWITCH ASSY | 1 | | | | |
| 12 | 90465-13M36 | CLAMP | 1 | | | | |
| | | | | | | | |
| | | | | | | | |
| | | | | | | | |
| | | | | | | | |
| | | | | | | | |
| | | | | | | | |
| | | | | | | | |
| | | | | | | | |

6X4 TILLER HANDLE FITTING KIT
STEERING FRICTION (F40A-FI)



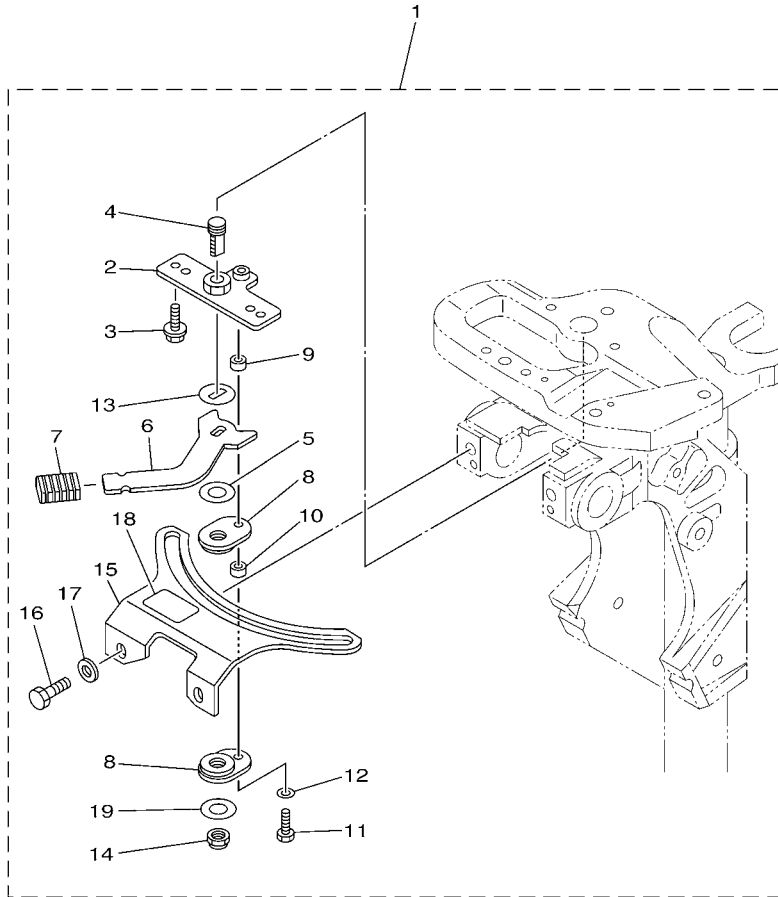
601S10S-M160

FIG. 17 STEERING FRICTION 5

| REF. NO. | PART NO. | DESCRIPTION | 601S | | | | REMARKS |
|----------|--------------|------------------------|------|--|--|--|---------|
| 1 | 67C-42508-04 | STEERING FRICTION ASSY | 1 | | | | |
| 2 | 67C-42527-03 | .PLATE, FRICTION | 1 | | | | |
| 3 | 90109-06M88 | .BOLT | 2 | | | | |
| 4 | 67C-42525-00 | .PLATE, FRICTION | 1 | | | | |
| 5 | 92990-06100 | .WASHER, SPRING | 2 | | | | |
| 6 | 67C-42562-00 | .SHAFT, STEERING LOCK | 1 | | | | |
| 7 | 67C-42561-00 | .KNOB, STEERING LOCK | 1 | | | | |
| 8 | 689-43633-00 | .COVER, TILT LEVER | 1 | | | | |
| 9 | 90202-10M56 | .WASHER, PLATE | 1 | | | | |
| 10 | 65W-42528-00 | .PLATE, FRICTION | 2 | | | | |
| 11 | 90209-10M26 | .WASHER | 1 | | | | |
| 12 | 90387-05053 | .COLLAR | 1 | | | | |
| 13 | 90185-10M14 | .NUT, SELF-LOCKING | 1 | | | | |
| 14 | 90387-05054 | .COLLAR | 1 | | | | |
| 15 | 97095-05020 | .BOLT | 1 | | | | |
| 16 | 92995-05600 | .WASHER | 1 | | | | |
| 17 | 95380-05600 | .NUT | 1 | | | | |
| 18 | 90201-106M5 | .WASHER, PLATE | 1 | | | | |
| | | | | | | | |
| | | | | | | | |
| | | | | | | | |
| | | | | | | | |

STEERING FRICTION

| Part No. | Applicable model |
|--------------|---|
| 6AH-42508-01 | F9.9J(F9.9B), F9.9H, FT9.9L(T9.9B), F15C (F15A), F20B (F20A), F20C MT |
| 6AH-42508-11 | FT9.9L(T9.9B), F15C (F15A), F20B (F20A) PT |



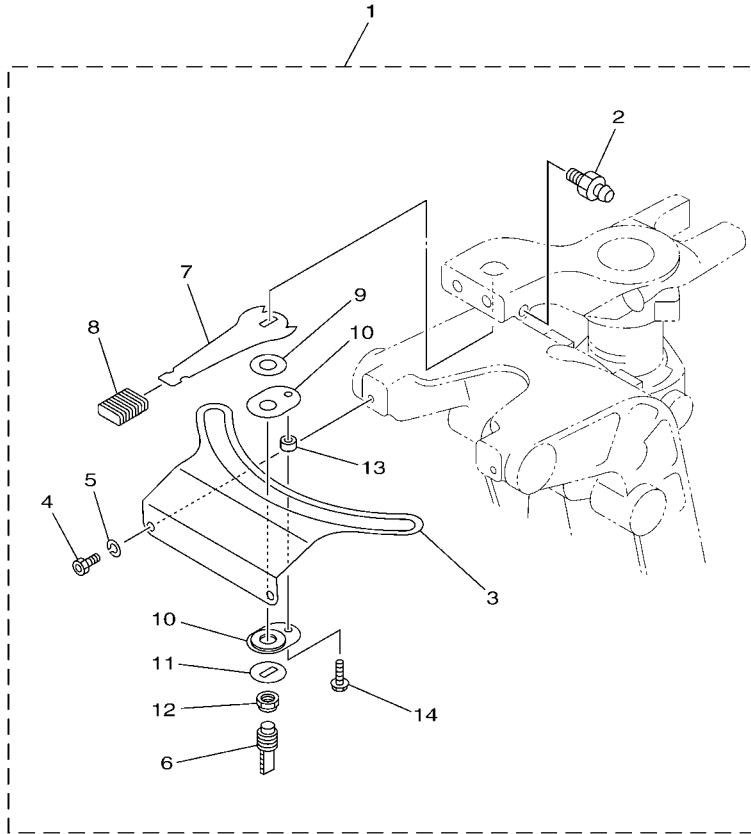
601S10S-M170

FIG. 18 STEERING FRICTION 6

| REF. NO. | PART NO. | DESCRIPTION | 601S | | | | REMARKS |
|----------|--------------|------------------------|------|--|--|--|------------------|
| 1 | 6AH-42508-01 | STEERING FRICTION ASSY | 1 | | | | UR |
| | 6AH-42508-11 | STEERING FRICTION ASSY | 1 | | | | UR |
| 2 | 68T-42525-01 | .PLATE, FRICTION | 1 | | | | |
| 3 | 90119-05018 | .BOLT, WITH WASHER | 2 | | | | |
| 4 | 67C-42562-00 | .SHAFT, STEERING LOCK | 1 | | | | |
| 5 | 90202-10M56 | .WASHER, PLATE | 1 | | | | |
| 6 | 68T-42561-00 | .KNOB, STEERING LOCK | 1 | | | | |
| 7 | 689-43633-00 | .COVER, TILT LEVER | 1 | | | | |
| 8 | 65W-42528-00 | .PLATE, FRICTION | 2 | | | | |
| 9 | 90387-05053 | .COLLAR | 1 | | | | |
| 10 | 90387-05054 | .COLLAR | 1 | | | | |
| 11 | 97095-05020 | .BOLT | 1 | | | | |
| 12 | 92995-05600 | .WASHER | 1 | | | | |
| 13 | 90209-10M26 | .WASHER | 1 | | | | |
| 14 | 90185-10M14 | .NUT, SELF-LOCKING | 1 | | | | |
| 15 | 6AH-42527-00 | .PLATE, FRICTION | 1 | | | | |
| 16 | 90101-08022 | .BOLT | 2 | | | | |
| 17 | 90201-08065 | .WASHER, PLATE | 2 | | | | |
| 18 | 68T-43155-00 | .MARK 1 | 1 | | | | FOR 6AH-42508-01 |
| 19 | 90201-106M5 | .WASHER, PLATE | 1 | | | | |

STEERING FRICTION

| Part No. | Applicable model |
|--------------|--------------------------|
| 65W-42508-00 | F25D (F25A/F25B), (E)40X |



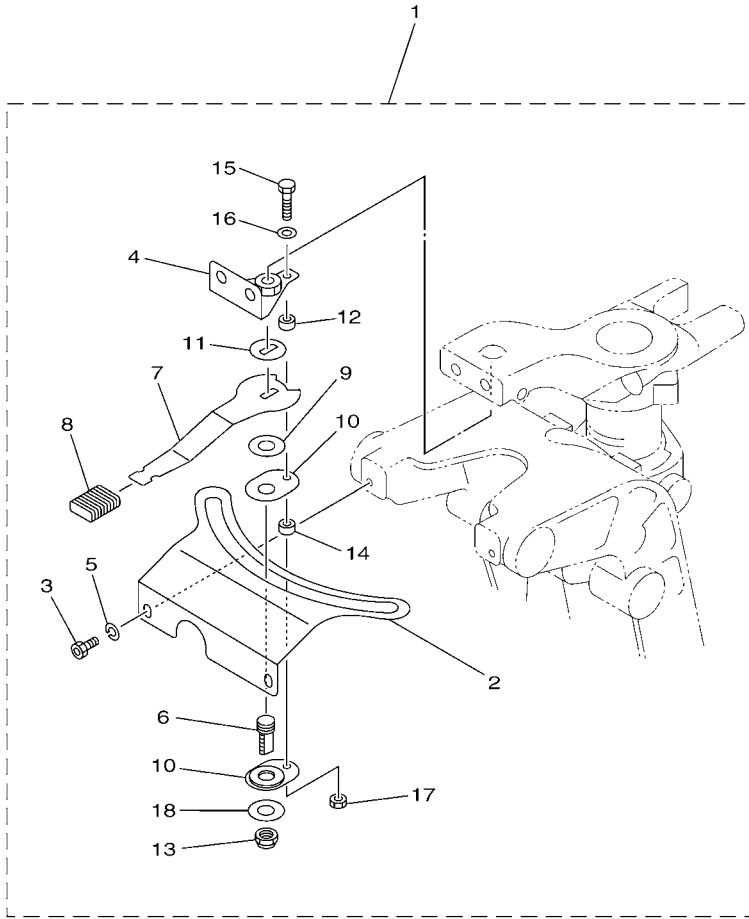
601S10S-M180

FIG. 19 STEERING FRICTION 7

| REF. NO. | PART NO. | DESCRIPTION | 601S | | | | REMARKS |
|----------|--------------|------------------------|------|--|--|--|---------|
| 1 | 65W-42508-00 | STEERING FRICTION ASSY | 1 | | | | |
| 2 | 93700-06M03 | .NIPPLE, GREASE | 1 | | | | |
| 3 | 65W-42527-00 | .PLATE, FRICTION | 1 | | | | |
| 4 | 90109-06M88 | .BOLT | 2 | | | | |
| 5 | 92990-06100 | .WASHER, SPRING | 2 | | | | |
| 6 | 65W-42562-00 | .SHAFT, STEERING LOCK | 1 | | | | |
| 7 | 65W-42561-00 | .KNOB, STEERING LOCK | 1 | | | | |
| 8 | 689-43633-00 | .COVER, TILT LEVER | 1 | | | | |
| 9 | 90202-10M56 | .WASHER, PLATE | 1 | | | | |
| 10 | 65W-42528-00 | .PLATE, FRICTION | 2 | | | | |
| 11 | 90209-10M26 | .WASHER | 1 | | | | |
| 12 | 90185-10M14 | .NUT, SELF-LOCKING | 1 | | | | |
| 13 | 90387-05054 | .COLLAR | 1 | | | | |
| 14 | 90109-05M89 | .BOLT | 1 | | | | |

STEERING FRICTION

| Part No. | Applicable model |
|--------------|--------------------------|
| 67C-42508-04 | F30B (F30A), F40F (F40A) |



601S10S-L170

FIG. 20 STEERING FRICTION 8

| REF. NO. | PART NO. | DESCRIPTION | 601S | | | | REMARKS |
|----------|--------------|------------------------|------|--|--|--|---------|
| 1 | 67C-42508-04 | STEERING FRICTION ASSY | 1 | | | | |
| 2 | 67C-42527-03 | .PLATE, FRICTION | 1 | | | | |
| 3 | 90109-06M88 | .BOLT | 2 | | | | |
| 4 | 67C-42525-00 | .PLATE, FRICTION | 1 | | | | |
| 5 | 92990-06100 | .WASHER, SPRING | 2 | | | | |
| 6 | 67C-42562-00 | .SHAFT, STEERING LOCK | 1 | | | | |
| 7 | 67C-42561-00 | .KNOB, STEERING LOCK | 1 | | | | |
| 8 | 689-43633-00 | .COVER, TILT LEVER | 1 | | | | |
| 9 | 90202-10M56 | .WASHER, PLATE | 1 | | | | |
| 10 | 65W-42528-00 | .PLATE, FRICTION | 2 | | | | |
| 11 | 90209-10M26 | .WASHER | 1 | | | | |
| 12 | 90387-05053 | .COLLAR | 1 | | | | |
| 13 | 90185-10M14 | .NUT, SELF-LOCKING | 1 | | | | |
| 14 | 90387-05054 | .COLLAR | 1 | | | | |
| 15 | 97095-05020 | .BOLT | 1 | | | | |
| 16 | 92995-05600 | .WASHER | 1 | | | | |
| 17 | 95380-05600 | .NUT | 1 | | | | |
| 18 | 90201-106M5 | .WASHER, PLATE | 1 | | | | |

STEERING FRICTION

| Part No. | Applicable model |
|--------------|-----------------------|
| 63D-42508-00 | FT50C, F50D, 40V, 50H |

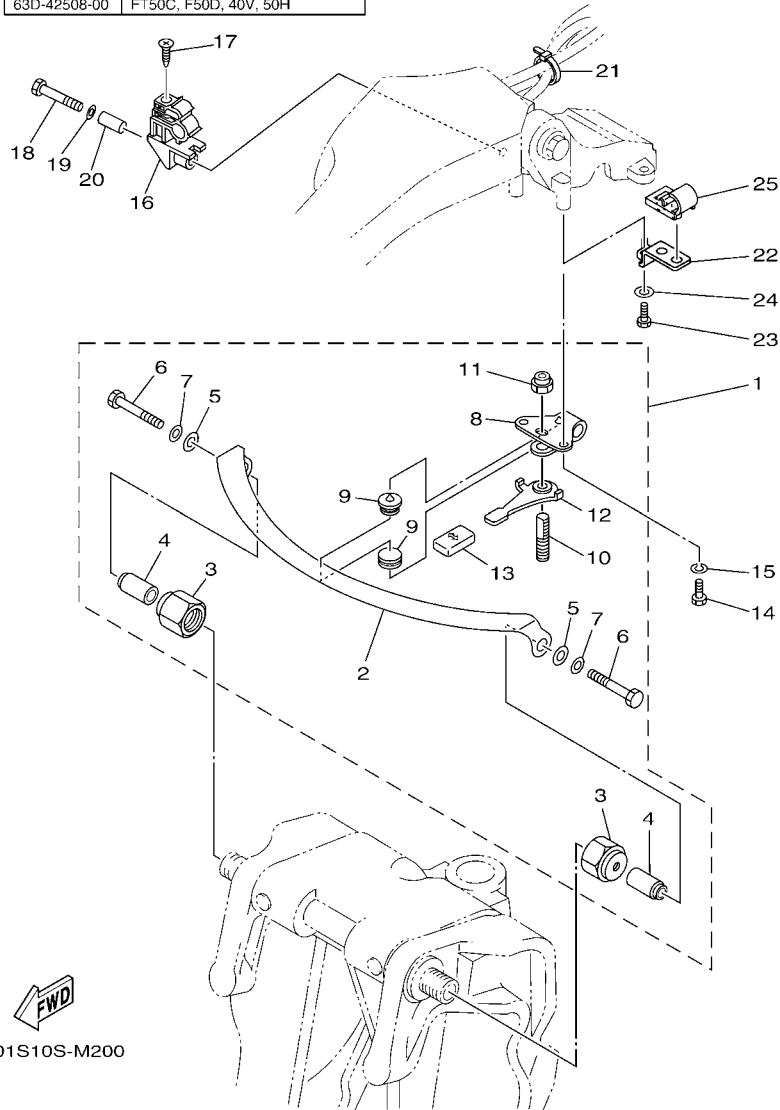


FIG. 21 STEERING FRICTION 9

| REF. NO. | PART NO. | DESCRIPTION | 601S | | | | REMARKS |
|----------|--------------|------------------------|------|--|--|--|---------|
| 1 | 63D-42508-00 | STEERING FRICTION ASSY | 1 | | | | |
| 2 | 63D-42527-00 | .PLATE, FRICTION | 1 | | | | |
| 3 | 63D-42546-00 | .NUT | 2 | | | | |
| 4 | 63D-42541-00 | .PIPE 1 | 2 | | | | |
| 5 | 90201-08M01 | .WASHER, PLATE | 2 | | | | |
| 6 | 97095-08050 | .BOLT | 2 | | | | |
| 7 | 92990-08600 | .WASHER, PLATE | 2 | | | | |
| 8 | 63D-42526-00 | .PLATE, FRICTION | 1 | | | | |
| 9 | 63D-42528-00 | .PLATE, FRICTION | 2 | | | | |
| 10 | 63D-42562-00 | .SHAFT, STEERING LOCK | 1 | | | | |
| 11 | 90185-10M01 | .NUT, SELF-LOCKING | 1 | | | | |
| 12 | 63D-42561-00 | .KNOB, STEERING LOCK | 1 | | | | |
| 13 | 682-43318-01 | .COVER | 1 | | | | |
| 14 | 97095-06016 | BOLT | 2 | | | | |
| 15 | 92995-06100 | WASHER, SPRING | 2 | | | | |
| 16 | 63D-82361-00 | CLAMP, CORD | 1 | | | | |
| 17 | 90161-06M00 | SCREW, TAPPING | 1 | | | | |
| 18 | 97095-06035 | BOLT | 1 | | | | |
| 19 | 92995-06600 | WASHER | 1 | | | | |
| 20 | 90387-06M26 | COLLAR | 1 | | | | |
| 21 | 90465-13M36 | CLAMP | 1 | | | | |
| 22 | 63D-24364-10 | STAY | 1 | | | | |
| 23 | 97095-06016 | BOLT | 1 | | | | |
| 24 | 92995-06600 | WASHER | 1 | | | | |
| 25 | 63D-24367-00 | CLAMP, FUEL PIPE 2 | 1 | | | | |

STEERING FRICTION

| Part No. | Applicable model |
|--------------|-------------------------|
| 692-42508-01 | 55B, 55D, 60F, 70B, 90A |

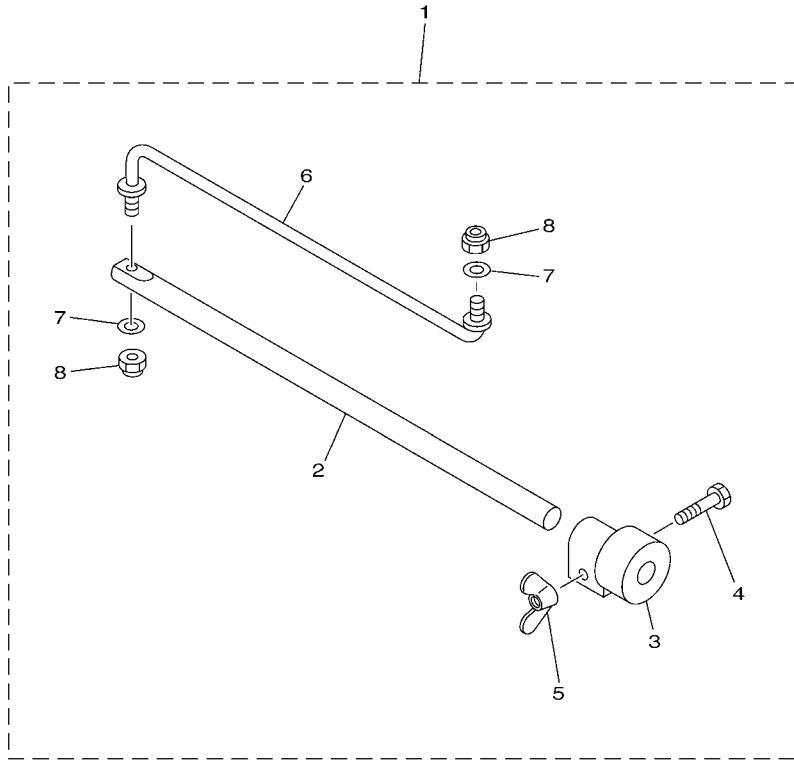
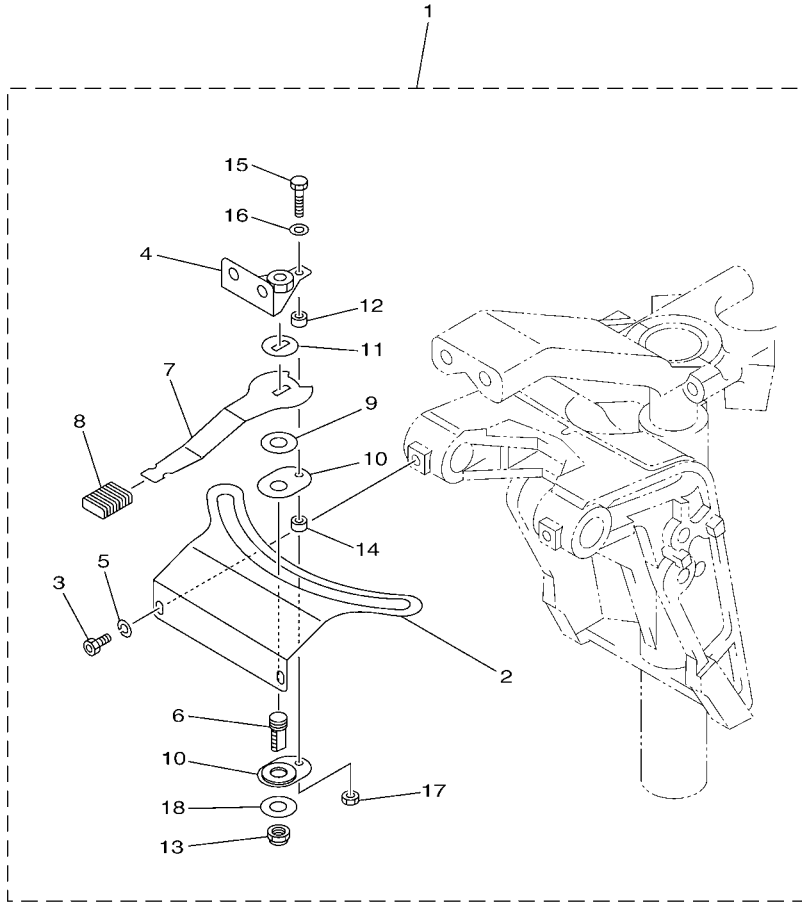


FIG. 22 STEERING FRICTION 10

| REF. NO. | PART NO. | DESCRIPTION | 601S | | | | REMARKS |
|----------|--------------|------------------------|------|--|--|--|---------|
| 1 | 692-42508-01 | STEERING FRICTION ASSY | 1 | | | | |
| 2 | 663-42518-00 | .SHAFT, FRICTION | 1 | | | | |
| 3 | 663-42528-00 | .PLATE, FRICTION | 1 | | | | |
| 4 | 97080-06035 | .BOLT | 1 | | | | |
| 5 | 90175-06003 | .NUT, WING | 1 | | | | |
| 6 | 692-42515-01 | .ROD, STEERING LINK | 1 | | | | |
| 7 | 92990-08600 | .WASHER, PLATE | 2 | | | | |
| 8 | 90185-08057 | .NUT, SELF-LOCKING | 2 | | | | |

STEERING FRICTION

| Part No. | Applicable model |
|--------------|---|
| 6C5-42508-01 | F50H (F50B), FT50J (T50B), F60F (F60B), FT60G (T60B), F70A (F70A) |



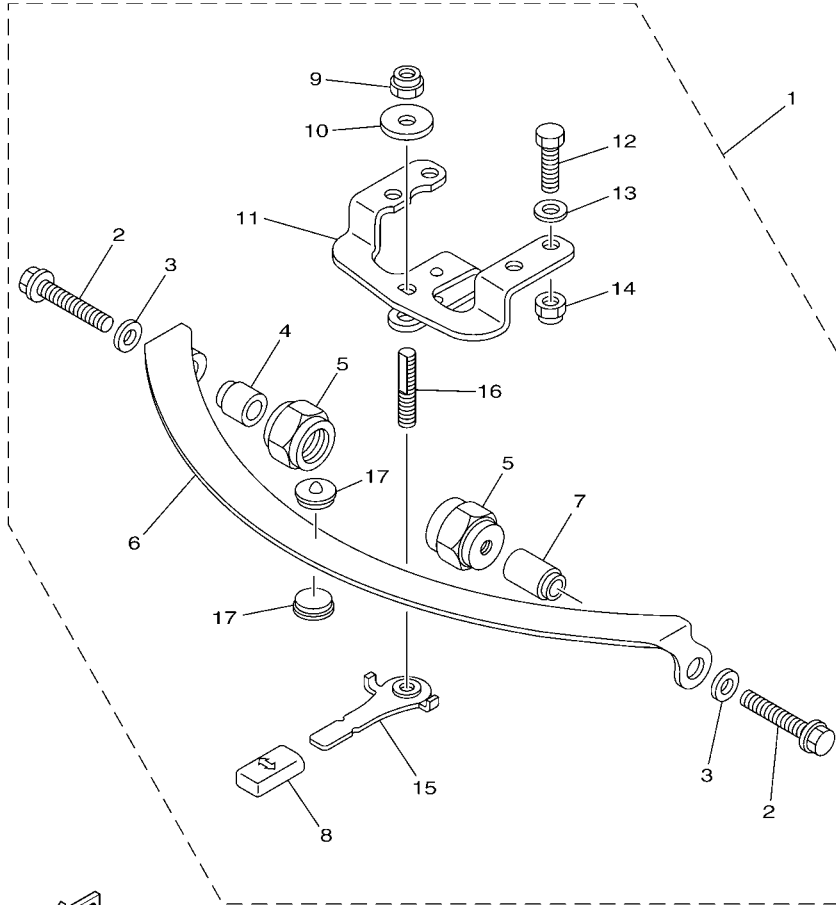
601S10S-M220

FIG. 23 STEERING FRICTION 11

| REF. NO. | PART NO. | DESCRIPTION | 601S | | | | REMARKS |
|----------|--------------|------------------------|------|--|--|--|---------|
| 1 | 6C5-42508-01 | STEERING FRICTION ASSY | 1 | | | | |
| 2 | 6C5-42527-00 | .PLATE, FRICTION | 1 | | | | |
| 3 | 90109-06M88 | .BOLT | 2 | | | | |
| 4 | 67C-42525-00 | .PLATE, FRICTION | 1 | | | | |
| 5 | 92990-06100 | .WASHER, SPRING | 2 | | | | |
| 6 | 67C-42562-00 | .SHAFT, STEERING LOCK | 1 | | | | |
| 7 | 67C-42561-00 | .KNOB, STEERING LOCK | 1 | | | | |
| 8 | 689-43633-00 | .COVER, TILT LEVER | 1 | | | | |
| 9 | 90202-10M56 | .WASHER, PLATE | 1 | | | | |
| 10 | 65W-42528-00 | .PLATE, FRICTION | 2 | | | | |
| 11 | 90209-10M26 | .WASHER | 1 | | | | |
| 12 | 90387-05053 | .COLLAR | 1 | | | | |
| 13 | 90185-10M14 | .NUT, SELF-LOCKING | 1 | | | | |
| 14 | 90387-05054 | .COLLAR | 1 | | | | |
| 15 | 97095-05020 | .BOLT | 1 | | | | |
| 16 | 92995-05600 | .WASHER | 1 | | | | |
| 17 | 95380-05600 | .NUT | 1 | | | | |
| 18 | 90201-106M5 | .WASHER, PLATE | 1 | | | | |

STEERING FRICTION

| Part No. | Applicable model |
|--------------|---|
| 67G-42508-10 | F75B (F75A), F80B, F90B (F90A), F95A, F100D, F115A (F115A), F115B (F115B), F75C |



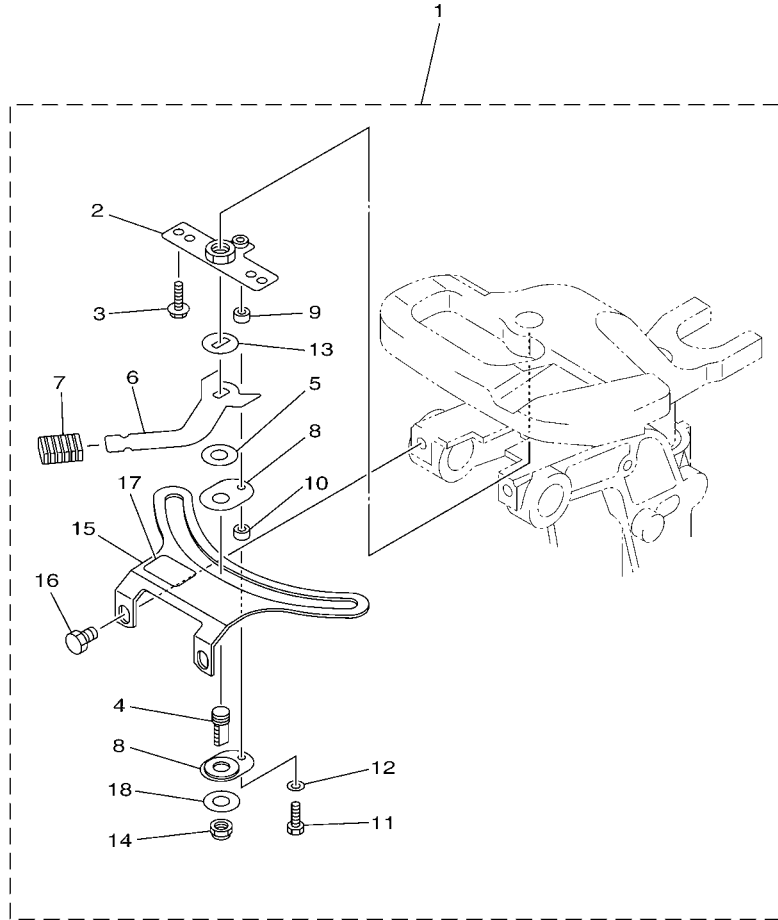
601S10S-N240

FIG. 24 STEERING FRICTION 12

| REF. NO. | PART NO. | DESCRIPTION | 601S | | | | REMARKS |
|----------|--------------|------------------------|------|--|--|--|---------|
| 1 | 67G-42508-10 | STEERING FRICTION ASSY | 1 | | | | |
| 2 | 90119-08M74 | .BOLT, WITH WASHER | 2 | | | | |
| 3 | 90201-08M01 | .WASHER, PLATE | 2 | | | | |
| 4 | 67G-42541-00 | .PIPE 1 | 1 | | | | |
| 5 | 67G-42546-00 | .NUT | 2 | | | | |
| 6 | 63D-42527-00 | .PLATE, FRICTION | 1 | | | | |
| 7 | 67G-42541-10 | .PIPE 1 | 1 | | | | |
| 8 | 682-43318-01 | .COVER | 1 | | | | |
| 9 | 90185-10M14 | .NUT, SELF-LOCKING | 1 | | | | |
| 10 | 90201-10M76 | .WASHER, PLATE | 1 | | | | |
| 11 | 6X4-42526-00 | .PLATE, FRICTION | 1 | | | | |
| 12 | 97095-08025 | .BOLT | 2 | | | | |
| 13 | 92995-08600 | .WASHER | 2 | | | | |
| 14 | 90185-08057 | .NUT, SELF-LOCKING | 2 | | | | |
| 15 | 67G-42561-00 | .KNOB, STEERING LOCK | 1 | | | | |
| 16 | 67G-42562-00 | .SHAFT, STEERING LOCK | 1 | | | | |
| 17 | 63D-42528-00 | .PLATE, FRICTION | 2 | | | | |

STEERING FRICTION

| Part No. | Applicable model |
|--------------|------------------|
| 68T-42508-02 | F8C (F8A) |



601S10S-M240

FIG. 25 STEERING FRICTION 13

| REF. NO. | PART NO. | DESCRIPTION | 601S | | | | REMARKS |
|----------|--------------|------------------------|------|--|--|--|---------|
| 1 | 68T-42508-02 | STEERING FRICTION ASSY | 1 | | | | |
| 2 | 68T-42525-01 | .PLATE, FRICTION | 1 | | | | |
| 3 | 97595-05514 | .BOLT, WITH WASHER | 2 | | | | |
| 4 | 67C-42562-00 | .SHAFT, STEERING LOCK | 1 | | | | |
| 5 | 90202-10M56 | .WASHER, PLATE | 1 | | | | |
| 6 | 68T-42561-00 | .KNOB, STEERING LOCK | 1 | | | | |
| 7 | 689-43633-00 | .COVER, TILT LEVER | 1 | | | | |
| 8 | 65W-42528-00 | .PLATE, FRICTION | 2 | | | | |
| 9 | 90387-05053 | .COLLAR | 1 | | | | |
| 10 | 90387-05054 | .COLLAR | 1 | | | | |
| 11 | 97095-05020 | .BOLT | 1 | | | | |
| 12 | 92995-05600 | .WASHER | 1 | | | | |
| 13 | 90209-10M26 | .WASHER | 1 | | | | |
| 14 | 90185-10M14 | .NUT, SELF-LOCKING | 1 | | | | |
| 15 | 68T-42527-01 | .PLATE, FRICTION | 1 | | | | |
| 16 | 90109-08M91 | .BOLT | 2 | | | | |
| 17 | 68T-43155-00 | .MARK 1 | 1 | | | | |
| 18 | 90201-106M5 | .WASHER, PLATE | 1 | | | | |

NUMERICAL INDEX

| PART NO. | REF. NO. | PART NO. | REF. NO. | PART NO. | REF. NO. | PART NO. | REF. NO. | PART NO. | REF. NO. | PART NO. | REF. NO. |
|-----------------|----------|--------------|----------|--------------|----------|-----------------|----------|--------------|----------|--------------|----------|
| 6X4-14137-00 | 1 - 26 | 63D-42126-00 | 3 - 17 | 67C-42527-03 | 17 - 2 | 6X4-42725-01 | 1 - 49 | 6X4-48154-00 | 1 - 18 | 703-82532-00 | 2 - 3 |
| | 3 - 26 | 6X4-42128-00 | 1 - 13 | | 20 - 2 | | 3 - 56 | | 3 - 18 | | 4 - 3 |
| 6X4-24364-00 | 5 - 18 | | 3 - 13 | 63D-42528-00 | 8 - 17 | 68V-42725-10 | 5 - 2 | 6X4-48215-00 | 1 - 4 | 6X4-82540-00 | 1 - 28 |
| | 7 - 19 | 6X4-42131-01 | 1 - 47 | | 15 - 9 | | 7 - 2 | | 3 - 4 | | 3 - 28 |
| 63D-24364-10 | 15 - 22 | | 3 - 54 | | 21 - 9 | 6H3-42725-30 | 12 - 2 | 6X4-48261-00 | 1 - 27 | 682-82556-00 | 2 - 6 |
| | 21 - 22 | 6X4-42137-00 | 1 - 7 | | 24 - 17 | 6X4-42728-10 | 1 - 59 | | 3 - 27 | | 4 - 6 |
| 63D-24367-00 | 5 - 17 | | 3 - 7 | 65W-42528-00 | 10 - 10 | | 3 - 66 | 6EK-48321-00 | 6 - 5 | 6X4-82563-00 | 2 - 8 |
| | 7 - 18 | 6X4-42159-00 | 1 - 41 | | 17 - 10 | 6X4-42735-00 | 5 - 16 | 6H3-48321-02 | 3 - 42 | | 4 - 8 |
| | 15 - 25 | | 3 - 48 | | 18 - 8 | | 7 - 17 | 63D-48321-11 | 14 - 4 | 69W-82575-00 | 2 - 5 |
| | 21 - 25 | 6X4-42177-00 | 1 - 6 | | 19 - 10 | 6X4-42821-00 | 1 - 30 | 67C-48321-11 | 9 - 3 | | 4 - 5 |
| 69W-26301-00 | 9 - 6 | | 3 - 6 | | 20 - 10 | | 3 - 30 | | 16 - 3 | 676-82577-01 | 2 - 2 |
| | 16 - 6 | 63D-42508-00 | 15 - 1 | | 23 - 10 | 68T-43155-00 | 18 - 18 | 6H1-48321-11 | 11 - 4 | | 4 - 2 |
| 6EK-26301-00 | 6 - 8 | | 21 - 1 | | 25 - 8 | | 25 - 17 | 6H3-48321-11 | 12 - 6 | 689-8257Y-00 | 2 - 7 |
| 63D-26301-01 | 14 - 7 | 65W-42508-00 | 19 - 1 | 663-42528-00 | 13 - 3 | 682-43318-01 | 8 - 8 | 67G-48321-20 | 5 - 6 | | 4 - 7 |
| 6H1-26301-01 | 11 - 7 | 692-42508-01 | 13 - 1 | | 22 - 3 | | 15 - 13 | | 7 - 6 | 6X4-82586-00 | 14 - 11 |
| 6H3-26301-01 | 12 - 9 | | 22 - 1 | 63D-42541-00 | 15 - 4 | | 21 - 13 | 6H1-48321-21 | 3 - 35 | 6X4-82586-10 | 4 - 10 |
| 67G-26301-10 | 5 - 9 | 6AH-42508-01 | 18 - 1 | | 21 - 4 | | 24 - 8 | 63D-48538-00 | 3 - 40 | | 6 - 10 |
| | 7 - 9 | 6C5-42508-01 | 10 - 1 | 67G-42541-00 | 8 - 4 | 689-43633-00 | 10 - 8 | | 3 - 46 | | 9 - 10 |
| 6X4-26367-00 | 1 - 36 | | 23 - 1 | | 24 - 4 | | 17 - 8 | | 5 - 7 | | 16 - 10 |
| | 1 - 39 | 68T-42508-02 | 25 - 1 | 67G-42541-10 | 8 - 7 | | 18 - 7 | | 5 - 10 | 6X4-82586-20 | 5 - 13 |
| | 3 - 37 | 67C-42508-04 | 17 - 1 | | 24 - 7 | | 19 - 8 | | 6 - 7 | | 7 - 13 |
| | 3 - 44 | | 20 - 1 | 63D-42546-00 | 15 - 3 | | 20 - 8 | | 7 - 7 | 6X4-82586-30 | 11 - 11 |
| 6X4-41291-00 | 1 - 8 | 67G-42508-10 | 8 - 1 | | 21 - 3 | | 23 - 8 | | 7 - 10 | | 12 - 13 |
| | 3 - 8 | | 24 - 1 | 67G-42546-00 | 8 - 5 | | 25 - 7 | | 9 - 4 | 6X4-83383-00 | 2 - 10 |
| 6X4-42102-01 | 5 - 1 | 6AH-42508-11 | 18 - 1 | | 24 - 5 | 6X4-44100-01 | 1 - 21 | | 9 - 7 | | 4 - 11 |
| 6X4-42102-11 | 7 - 1 | 692-42515-01 | 13 - 6 | 63D-42561-00 | 15 - 12 | | 3 - 21 | | 11 - 5 | 6X4-83386-00 | 2 - 11 |
| 6X4-42102-23 | 9 - 1 | | 22 - 6 | | 21 - 12 | 6X4-44102-00 | 1 - 23 | | 11 - 8 | | 4 - 12 |
| 6X4-42102-41 | 11 - 1 | 663-42518-00 | 13 - 2 | 65W-42561-00 | 19 - 7 | | 3 - 23 | | 12 - 7 | 6G5-83557-00 | 5 - 15 |
| 6X4-42102-52 | 12 - 1 | | 22 - 2 | 67C-42561-00 | 10 - 7 | 6X4-44132-00 | 1 - 25 | | 12 - 10 | 6K3-83557-00 | 7 - 16 |
| 6X4-42102-63 | 14 - 1 | 67C-42525-00 | 10 - 4 | | 17 - 7 | | 3 - 25 | | 14 - 5 | 90101-08022 | 18 - 16 |
| 6X4-42102-71 | 16 - 1 | | 17 - 4 | | 20 - 7 | 6X4-44139-01 | 1 - 9 | | 14 - 8 | 90101-12014 | 1 - 51 |
| 6X4-42102-C0 | 6 - 1 | | 20 - 4 | | 23 - 7 | | 3 - 9 | | 16 - 4 | | 3 - 58 |
| 6X4-42103-09 | 3 - 1 | | 23 - 4 | 67G-42561-00 | 8 - 15 | 6X4-44159-00-4D | 3 - 49 | | 16 - 7 | 90109-05M89 | 19 - 14 |
| 6X4-42103-54 | 1 - 1 | 68T-42525-01 | 18 - 2 | | 24 - 15 | 6X4-44159-00-8D | 1 - 42 | 6X4-48538-00 | 1 - 35 | 90109-06M88 | 10 - 3 |
| 6X4-42111-02-4D | 3 - 2 | | 25 - 2 | 68T-42561-00 | 18 - 6 | 6X4-44159-10-8D | 11 - 12 | | 3 - 36 | | 17 - 3 |
| 6X4-42111-02-8D | 1 - 2 | 63D-42526-00 | 15 - 8 | | 25 - 6 | 6X4-44173-00 | 1 - 43 | 6X4-48538-10 | 1 - 38 | | 19 - 4 |
| 6X4-42115-00 | 1 - 22 | | 21 - 8 | 63D-42562-00 | 15 - 10 | | 3 - 50 | | 3 - 43 | | 20 - 3 |
| | 3 - 22 | 6X4-42526-00 | 8 - 11 | | 21 - 10 | | 11 - 13 | 6X4-81860-00 | 6 - 12 | | 23 - 3 |
| 6X4-42119-01 | 1 - 5 | | 24 - 11 | 65W-42562-00 | 19 - 6 | 6X4-44177-00 | 1 - 12 | | 7 - 14 | 90109-08M91 | 25 - 16 |
| | 3 - 5 | 63D-42527-00 | 8 - 6 | 67C-42562-00 | 10 - 6 | | 3 - 12 | | 9 - 11 | 90116-10031 | 7 - 5 |
| 6EK-42121-00 | 6 - 4 | | 15 - 2 | | 17 - 6 | 6X4-44188-00 | 1 - 15 | | 16 - 11 | | 11 - 3 |
| 6X4-42121-00-8D | 7 - 3 | | 21 - 2 | | 18 - 4 | | 3 - 15 | 6X4-81942-01 | 2 - 13 | | 12 - 4 |
| | 11 - 2 | | 24 - 6 | | 20 - 6 | 6G8-44191-00 | 1 - 45 | | 4 - 14 | 90116-10062 | 5 - 4 |
| | 12 - 3 | 65W-42527-00 | 19 - 3 | | 23 - 6 | | 3 - 52 | 62Y-82361-00 | 4 - 16 | 90116-10063 | 6 - 2 |
| 65W-42121-11-4D | 3 - 57 | 6AH-42527-00 | 18 - 15 | | 25 - 4 | 6X4-47731-01 | 1 - 24 | 63D-82361-00 | 15 - 16 | 90119-05018 | 18 - 3 |
| 6X4-42121-11-8D | 5 - 3 | 6C5-42527-00 | 10 - 2 | 67G-42562-00 | 8 - 16 | | 3 - 24 | | 21 - 16 | 90119-08M74 | 8 - 2 |
| 63D-42121-22-8D | 1 - 50 | | 23 - 2 | | 24 - 16 | 703-48129-00 | 1 - 29 | 6X4-82510-01 | 2 - 1 | | 24 - 2 |
| 63D-42126-00 | 1 - 17 | 68T-42527-01 | 25 - 15 | 6H4-42724-20 | 14 - 2 | | 3 - 29 | | 4 - 1 | 90152-05007 | 1 - 10 |

NUMERICAL INDEX

| PART NO. | REF. NO. | PART NO. | REF. NO. | PART NO. | REF. NO. | PART NO. | REF. NO. | PART NO. | REF. NO. | PART NO. | REF. NO. |
|-------------|----------|-------------|----------|-------------|----------|-------------|----------|-------------|----------|----------|----------|
| 90152-05007 | 3 - 10 | 90202-10M56 | 17 - 9 | 90464-09M42 | 7 - 12 | 92990-08600 | 15 - 7 | 97095-06014 | 2 - 12 | | |
| 90161-06M00 | 15 - 17 | | 18 - 5 | | 9 - 9 | | 21 - 7 | | 3 - 39 | | |
| | 21 - 17 | | 19 - 9 | | 11 - 10 | | 22 - 7 | | 3 - 45 | | |
| 90161-06M03 | 4 - 17 | | 20 - 9 | | 12 - 12 | 92990-12200 | 1 - 52 | | 4 - 13 | | |
| 90175-06003 | 13 - 5 | | 23 - 9 | | 14 - 10 | | 3 - 59 | 97095-06016 | 5 - 19 | | |
| | 22 - 5 | | 25 - 5 | | 16 - 9 | 92990-12600 | 1 - 57 | | 7 - 20 | | |
| 90185-08057 | 8 - 14 | 90206-12M22 | 1 - 53 | 90465-13M24 | 4 - 22 | | 3 - 64 | | 15 - 14 | | |
| | 13 - 8 | | 3 - 60 | | 5 - 21 | 92995-05600 | 10 - 16 | | 15 - 23 | | |
| | 22 - 8 | 90209-10M26 | 10 - 11 | | 6 - 11 | | 17 - 16 | | 21 - 14 | | |
| | 24 - 14 | | 17 - 11 | | 7 - 22 | | 18 - 12 | | 21 - 23 | | |
| 90185-10027 | 4 - 23 | | 18 - 13 | 90465-13M30 | 5 - 22 | | 20 - 16 | 97095-06030 | 1 - 33 | | |
| | 5 - 5 | | 19 - 11 | | 7 - 23 | | 23 - 16 | | 3 - 33 | | |
| | 6 - 3 | | 20 - 11 | 90465-13M36 | 4 - 15 | | 25 - 12 | 97095-06035 | 4 - 18 | | |
| | 7 - 4 | | 23 - 11 | | 9 - 12 | 92995-06100 | 15 - 15 | | 15 - 18 | | |
| | 9 - 2 | | 25 - 13 | | 11 - 18 | | 21 - 15 | | 21 - 18 | | |
| | 11 - 19 | 90386-08032 | 1 - 16 | | 12 - 14 | 92995-06600 | 1 - 34 | 97095-08025 | 8 - 12 | | |
| | 12 - 5 | | 3 - 16 | | 15 - 21 | | 3 - 34 | | 24 - 12 | | |
| | 14 - 3 | 90386-12003 | 1 - 56 | | 16 - 12 | | 4 - 19 | 97095-08040 | 1 - 31 | | |
| | 16 - 2 | | 3 - 63 | | 21 - 21 | | 5 - 20 | | 3 - 31 | | |
| 90185-10M01 | 15 - 11 | 90386-26MA3 | 1 - 46 | 90468-10005 | 3 - 41 | | 7 - 21 | | 11 - 16 | | |
| | 21 - 11 | | 3 - 53 | | 3 - 47 | | 15 - 19 | 97095-08050 | 15 - 6 | | |
| 90185-10M14 | 8 - 9 | | 11 - 15 | | 5 - 8 | | 15 - 24 | | 21 - 6 | | |
| | 10 - 13 | 90387-05053 | 10 - 12 | | 5 - 11 | | 21 - 19 | 97595-05514 | 25 - 3 | | |
| | 17 - 13 | | 17 - 12 | | 6 - 6 | | 21 - 24 | 97780-60920 | 1 - 44 | | |
| | 18 - 14 | | 18 - 9 | | 7 - 8 | 92995-08600 | 1 - 32 | | 3 - 51 | | |
| | 19 - 12 | | 20 - 12 | | 7 - 11 | | 3 - 32 | | 11 - 14 | | |
| | 20 - 13 | | 23 - 12 | | 9 - 5 | | 8 - 13 | 97980-06216 | 2 - 9 | | |
| | 23 - 13 | | 25 - 9 | | 9 - 8 | | 11 - 17 | | 4 - 9 | | |
| | 24 - 9 | 90387-05054 | 10 - 14 | | 11 - 6 | | 24 - 13 | 97985-06216 | 1 - 48 | | |
| | 25 - 14 | | 17 - 14 | | 11 - 9 | 93700-06M03 | 1 - 3 | | 3 - 55 | | |
| 90185-12M12 | 1 - 58 | | 18 - 10 | | 12 - 8 | | 3 - 3 | | | | |
| | 3 - 65 | | 19 - 13 | | 12 - 11 | | 19 - 2 | | | | |
| 90201-08065 | 18 - 17 | | 20 - 14 | | 14 - 6 | 95380-05600 | 10 - 17 | | | | |
| 90201-08M01 | 8 - 3 | | 23 - 14 | | 14 - 9 | | 17 - 17 | | | | |
| | 15 - 5 | | 25 - 10 | | 16 - 5 | | 20 - 17 | | | | |
| | 21 - 5 | 90387-06M26 | 4 - 20 | | 16 - 8 | | 23 - 17 | | | | |
| | 24 - 3 | | 15 - 20 | 90501-23215 | 1 - 14 | 95380-06600 | 1 - 19 | | | | |
| 90201-106M5 | 10 - 18 | | 21 - 20 | | 3 - 14 | | 3 - 19 | | | | |
| | 17 - 18 | 90387-12M02 | 1 - 54 | 91490-20010 | 1 - 11 | 97080-06035 | 13 - 4 | | | | |
| | 18 - 19 | | 3 - 61 | | 1 - 20 | | 22 - 4 | | | | |
| | 20 - 18 | 90447-22006 | 4 - 21 | | 3 - 11 | 97095-05020 | 10 - 15 | | | | |
| | 23 - 18 | 90447-22007 | 5 - 14 | | 3 - 20 | | 17 - 15 | | | | |
| | 25 - 18 | | 7 - 15 | 92990-06100 | 10 - 5 | | 18 - 11 | | | | |
| 90201-10M76 | 8 - 10 | 90464-08M07 | 2 - 4 | | 17 - 5 | | 20 - 15 | | | | |
| | 24 - 10 | | 4 - 4 | | 19 - 5 | | 23 - 15 | | | | |
| 90201-12035 | 1 - 55 | 90464-09M42 | 3 - 38 | | 20 - 5 | | 25 - 11 | | | | |
| | 3 - 62 | | 5 - 12 | | 23 - 5 | 97095-06014 | 1 - 37 | | | | |
| 90202-10M56 | 10 - 9 | | 6 - 9 | 92990-08600 | 13 - 7 | | 1 - 40 | | | | |