

**PARTS
CATALOGUE
CATALOGUE
DE PIÈCES DÉTACHÉES**

RIGGING-STEERING



1H602-30SF1

()

RIGGING-STEERING
PARTS CATALOGUE
©2009 by Yamaha Motor Co., Ltd.
1st edition, April 2009
All rights reserved.
Any reprinting or unauthorized use
without the written permission of
Yamaha Motor Co., Ltd.
is expressly prohibited.
Printed in Japan.

RIGGING-STEERING
CATALOGUE DE PIÈCES DÉTACHÉES
©2009 par Yamaha Motor Co., Ltd.
1^{re} édition, avril 2009
Tous droits réservés
Toute réimpression ou utilisation
non autorisée sans la permission écrite
de la Yamaha Motor Co., Ltd.
est formellement interdite.
Imprimé au Japon

FOREWORD

This Parts Catalogue is related to the parts for the model(s) on the cover page. When you are ordering replacement parts, please refer to this Parts Catalogue and quote both part numbers and part names correctly.

1. Modifications or additions which have been made after the issue of the Parts Catalogue will be announced in the Parts News.

It is advisable that you make the necessary corrections to the Parts Catalogue according to the Parts News.

2. Abbreviations

The following abbreviations are used in this Parts Catalogue.

“UR” Use specified parts number.

“UN” Use as many as needed.

“AP” Alternate Parts

“LM” Locally Made (Parts need to be ordered locally)

“F#” Frame No. (Applicable machine No.)

“O/S” Over Size

3. The number of components for assembly

- Parts, which are to be supplied in an assembly, are listed with a dot (.) in front of the part name as shown below.
- The numeral appearing to the right of each component part indicates the quantity of parts for each assembly unit.

PART NO.	DESCRIPTION	Q'TY	REMARKS
2F5-83310-60	FRONT FLASHER LIGHT ASSY	2	
115-83311-60	.BULB (6V-18W)	1	

4. Applicable colours of graphics are represented in the “REMARKS” as shown below.

PART NO.	DESCRIPTION	Q'TY	REMARKS
2N4-24110-00-X5	FUEL TANK COMP.	2	MXR
3J1-24240-10	.GRAPHIC, FUEL TANK	1	FOR MXR

5. Note that the illustrations for reference in finding parts numbers are not to be used for assembling. When assembling, please use the applicable service manual.

6. The asterisk (*) before a reference number indicates modified items after the first edition.

AVANT-PROPOS

Ce catalogue de pièces détachées concerne les pièces pour le(s) modèle(s) indiqué(s) sur la page de couverture. Lorsque vous commandez des pièces de rechange, veuillez vous référer à ce catalogue de pièces détachées et indiquer clairement les numéros et les noms des pièces détachées.

1. Les modifications ou ajouts ayant été effectués après la parution du catalogue de pièces détachées seront décrits dans les Bulletins d'information concernant les pièces détachées.

Il est recommandé que vous apportiez les corrections nécessaires au catalogue des pièces détachées en vous référant aux Bulletins d'information.

2. Abréviations

Dans ce catalogue, les abréviations suivantes sont utilisées:

“UR” Utiliser le numéro de pièces spécifié.

“UN” Utiliser autant que nécessaire.

“AP” Pièces de substitution

“LM” Fabrication locale (les pièces doivent être commandées localement.)

“F#” N° de cadre (applicable au N° de série)

“O/S” Surdimensionné

3. Nombre de pièces d'un assemblage

- Les pièces fournies comme composants d'un assemblage sont précédées d'un point (.) de la manière indiquée ci-dessous.
- Le chiffre apparaissant à la droite de chaque composant indique la quantité de pièces pour chaque unité d'assemblage.

N° PIECES	DESCRIPTION	QTE	REMARQUES
2F5-83310-60	ENS. CLIGNOTANT AVANT	2	
115-83311-60	.AMPOULE (6V-18W)	1	

4. Les couleurs concernant les graphiques sont indiquées dans la colonne “REMARQUES”, comme indiqué ci-dessous.

N° PIECES	DESCRIPTION	QTE	REMARQUES
2N4-24110-00-X5	RESERVOIR A ESSENCE.	2	MXR
3J1-24240-10	.GRAPHIQUE	1	POUR MXR

5. Veuillez noter que les illustrations sont indiquées à titre de référence pour trouver les numéros de pièces, non pour être utilisées lors de l'assemblage. Lors de l'assemblage, veuillez utiliser le manuel d'entretien adéquat.

6. L'astérisque (*) placé devant un numéro de référence indique des éléments qui ont été modifiés après la première édition.

CONTENTS

BASE HANDLE - ALL	1
BASE HANDLE ELECTRICAL	4
FITTING KIT 1	5
FITTING KIT 2	6
STEERING FRICTION 1	7
FITTING KIT 3	8
STEERING FRICTION 2	9
FITTING KIT 4	10
STEERING FRICTION 3	11
FITTING KIT 5	12
FITTING KIT 6	13
STEERING FRICTION 4	14
FITTING KIT 7	15
STEERING FRICTION 5	16
FITTING KIT 8	17
STEERING FRICTION 6	18
STEERING FRICTION 7	19
STEERING FRICTION 8	20
STEERING FRICTION 9	21
STEERING FRICTION 10	22
STEERING FRICTION 11	23
STEERING FRICTION 12	24
STEERING FRICTION 13	25

INDEX

NUMERICAL INDEX	26
-----------------------	----

TABLE DES MATIERES

BASE MANCHE - TOUT	1
BASE MANCHE ELECTRICAL	4
EQUIPEMENT APPROPPIE 1	5
EQUIPEMENT APPROPPIE 2	6
CUVETTE POIGNEE DE DIRECTION 1	7
EQUIPEMENT APPROPPIE 3	8
CUVETTE POIGNEE DE DIRECTION 2	9
EQUIPEMENT APPROPPIE 4	10
CUVETTE POIGNEE DE DIRECTION 3	11
EQUIPEMENT APPROPPIE 5	12
EQUIPEMENT APPROPPIE 6	13
CUVETTE POIGNEE DE DIRECTION 4	14
EQUIPEMENT APPROPPIE 7	15
CUVETTE POIGNEE DE DIRECTION 5	16
EQUIPEMENT APPROPPIE 8	17
CUVETTE POIGNEE DE DIRECTION 6	18
CUVETTE POIGNEE DE DIRECTION 7	19
CUVETTE POIGNEE DE DIRECTION 8	20
CUVETTE POIGNEE DE DIRECTION 9	21
CUVETTE POIGNEE DE DIRECTION10	22
CUVETTE POIGNEE DE DIRECTION11	23
CUVETTE POIGNEE DE DIRECTION12	24
CUVETTE POIGNEE DE DIRECTION13	25

INDEX

INDEX NUMERIQUE	26
-----------------------	----

6X4 TILLER HANDLE KIT (50-90 & F40-F115)

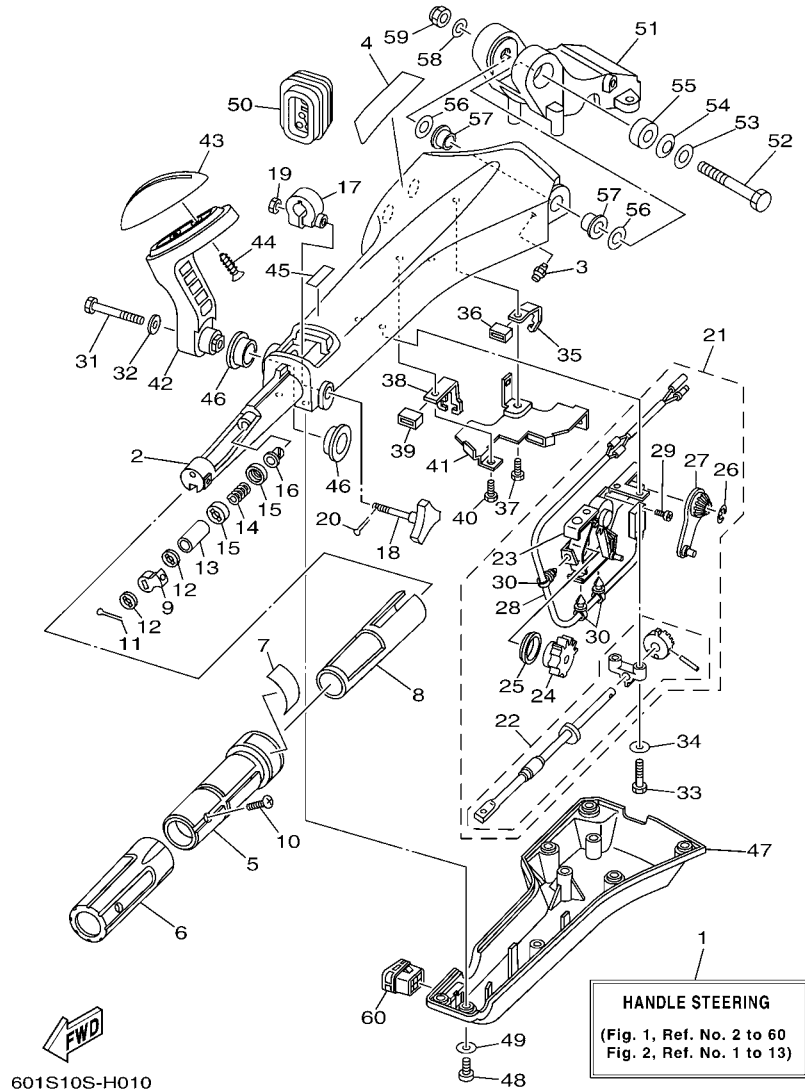


FIG. 1 BASE HANDLE - ALL

BASE MANCHE - TOUT

REF. NO.	PART NO. N° PIECES	DESCRIPTION DESCRIPTION	602S				REMARKS REMARQUES
1	6X4-42101-02	HANDLE, STEERING POIGNEE	1				LM LM
2	6X4-42111-02-4D	HANDLE, STEERING POIGNEE	1				
3	93700-06M03	NIPPLE, GREASE PION	1				
4	6X4-48215-00	GRAPHIC ADHESIF	1				
5	6X4-42119-01	GRIP, STEERING HANDLE POIGNEE, BARRE FRANCHE	1				
6	6X4-42177-00	RUBBER, HANDLE CAOUTCHOUC, POIGNEE	1				
7	6X4-42137-00	INDICATOR, THROTTLE INDICATEUR, ACCELERATION	1				
8	6X4-41291-00	BUSHING COUSSINET	1				
9	6X4-44139-01-94	COLLAR COLLIER	1				
10	90152-05006	SCREW, COUNTERSUNK VIS, TETE NOYEE	1				
11	91490-20010	PIN, COTTER GOUPILLE	1				
12	6X4-44177-00	WASHER RONDELLE	2				
13	6X4-42128-00	COLLAR, DISTANCE 1 COLLIER, D'ENTRETOISE 1	1				
14	90501-23215	SPRING, COMPRESSION RESSORT, COMPRESSION	1				
15	6X4-44188-00	WASHER RONDELLE	2				
16	90386-08032	BUSH DOUILLE	1				
17	63D-42126-00	FRICTION, STEERING HANDLE GRIP CUVETTE, POIGNEE DE DIRECTION	1				
18	6X4-48154-00	KNOB, THROTTLE BOUTON, ACCELERATEUR	1				
19	95380-06600	NUT, HEXAGON ECROU	1				
20	91490-20010	PIN, COTTER GOUPILLE	1				
21	6X4-44100-00	SHIFT LINK ASSY MAILLON DE SELECTEUR	1				
22	6X4-42115-00	.SHAFT, STEERING HANDLE .AXE, BARRE FRANCHE	1				
23	6X4-44102-00	.SHIFT ASSIST ASSY. .SELECTEUR DE MAINTIEN	1				
24	6X4-47731-00	.GEAR, DRIVE .PIGNON D'ENTRAINEMENT	1				
25	6X4-44132-00	.BUSHING .COUSSINET	1				
26	6X4-14137-00	.CLIP .JONC	1				
27	6X4-48261-00	.ARM, THROTTLE .BRAS, ACCELERATION	1				

6X4 TILLER HANDLE KIT (50-90 & F40-F115)

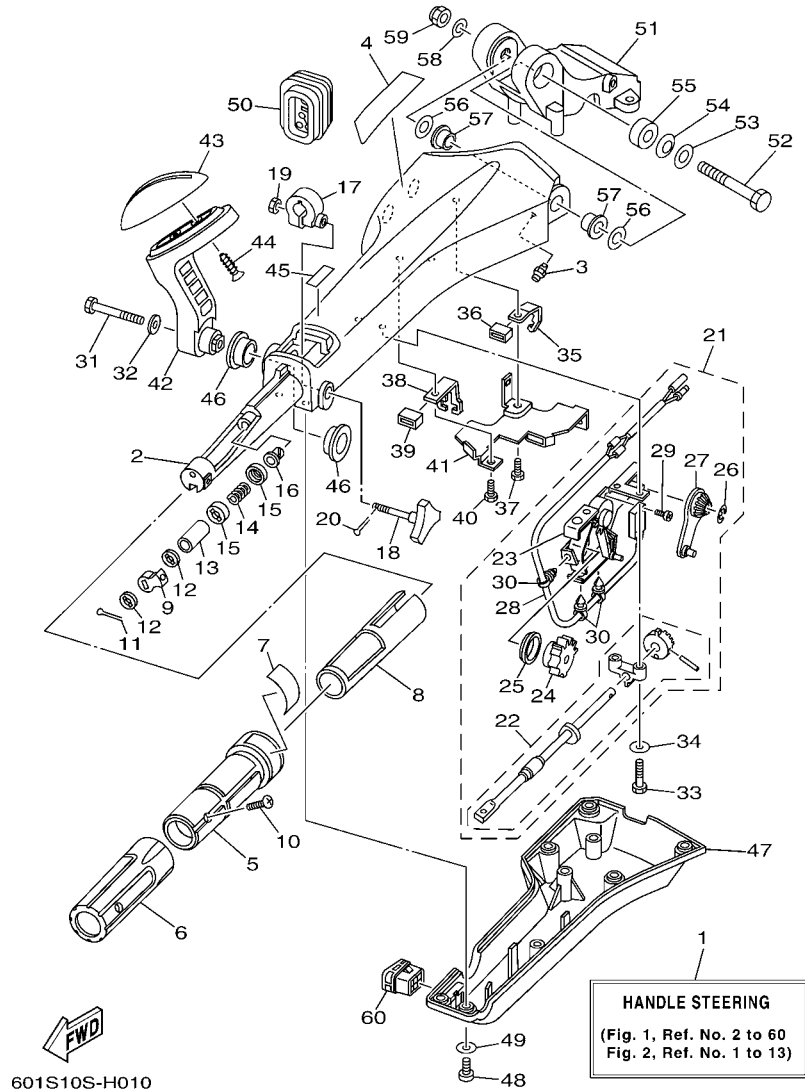
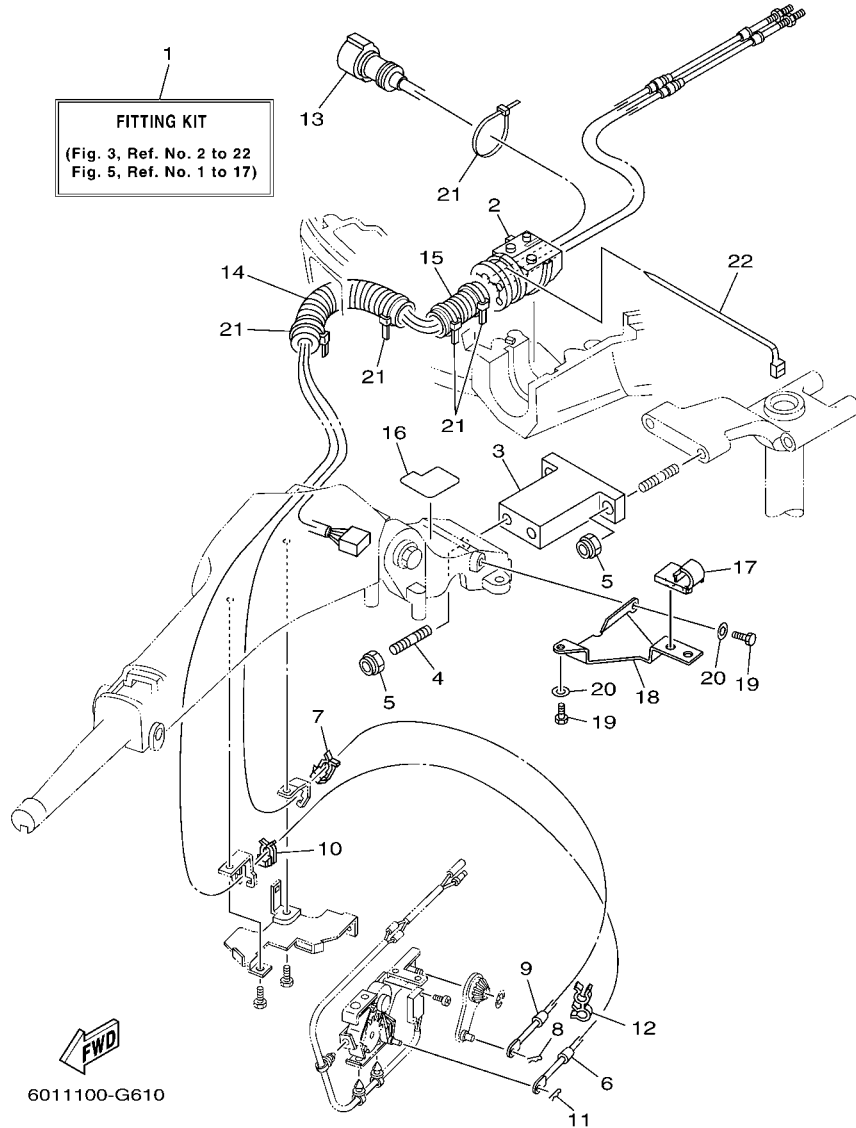


FIG. 1 BASE HANDLE - ALL

BASE MANCHE - TOUT

REF. NO.	PART NO. N° PIECES	DESCRIPTION DESCRIPTION	6025				REMARKS REMARQUES
28	6X4-82540-00	.NEUTRAL SWITCH ASSY .CONTACTEUR DE POINT-MORT	1				
29	6A5-48129-10	.SCREW 3 .VIS 3	2				
30	6X4-42821-00	.BAND, CLAMP .BRIDE, COLLIER	3				
31	97095-08040	BOLT BOULON	1				
32	92995-08600	WASHER RONDELLE	1				
33	97095-06030	BOLT BOULON	2				
34	92995-06600	WASHER RONDELLE	2				
35	6X4-48538-00	CLAMP, CABLE 1 COLLIER	1				
36	6X4-26367-00	PROTECTOR PROTECTEUR	1				
37	97095-06014	BOLT BOULON	1				
38	6X4-48538-10	CLAMP, CABLE 1 COLLIER	1				
39	6X4-26367-00	PROTECTOR PROTECTEUR	1				
40	97095-06014	BOLT BOULON	1				
41	6X4-42159-00	STAY SUPPORT	1				
42	6X4-44159-00-4D	HANDLE, GEAR SHIFT POIGNEE, LEVIER D'EMBAYAGE	1				
43	6X4-44173-00	LEVER, SHIFT CONTROL POIGNEE, INVERSION	1				
44	97780-60920	SCREW, TAPPING VIS, TETE BOMBEE	2				
45	6G8-44191-00	INDICATOR, SHIFT ETIQUETTE, EMBRAYAGE	1				
46	90386-26MA3	BUSH DOUILLE	2				
47	6X4-42131-01	COVER, HANDLE STEERING COUVERCLE	1				
48	97885-06016	SCREW, PAN HEAD VIS, A ENCOCHE	6				
49	92995-06600	WASHER RONDELLE	6				
50	6X4-42725-01	GROMMET PASSE-FIL	1				
51	63D-42121-22-4D	BRACKET SUPPORT	1				
52	90101-12014	BOLT BOULON	1				
53	92990-12200	WASHER, PLAIN RONDELLE, PLATE	1				
54	90206-12M22	WASHER, WAVE RONDELLE, ONDULEE	1				

6X4 TILLER HANDLE FITTING KIT (F115)



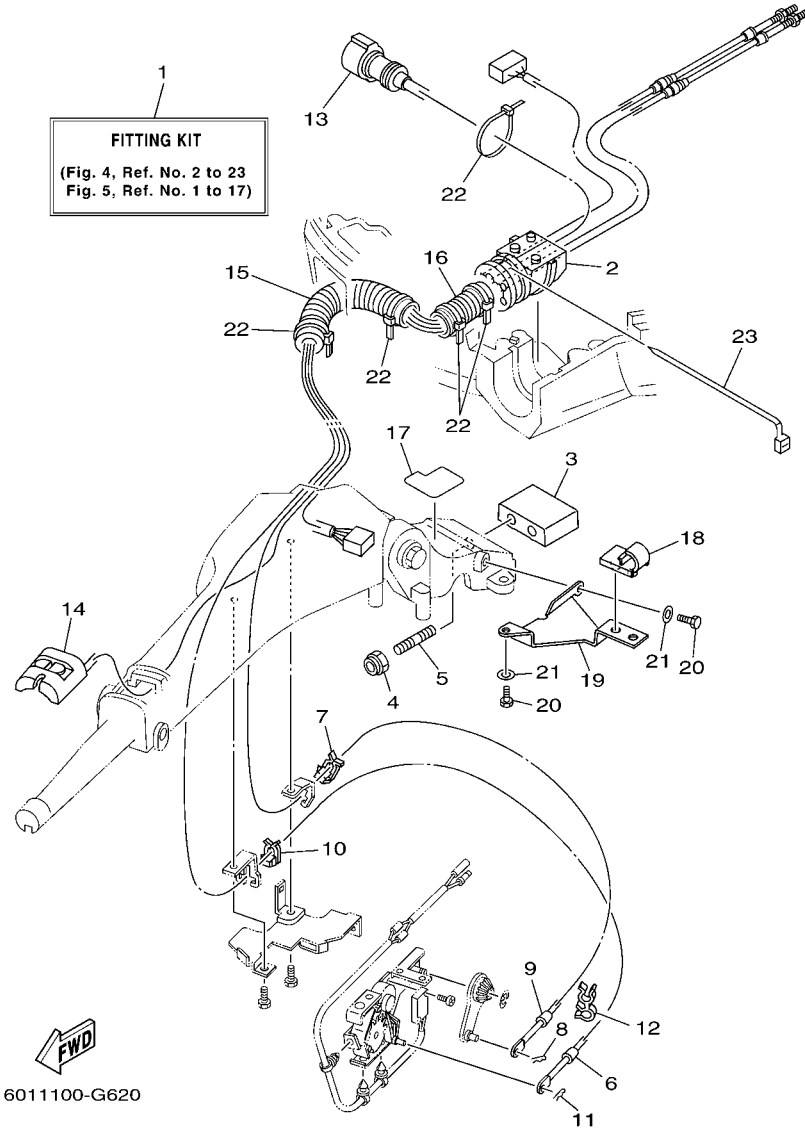
6011100-G610

FIG. 3 FITTING KIT 1

EQUIPEMENT APPROPRIE 1

REF. NO.	PART NO. N° PIECES	DESCRIPTION DESCRIPTION	6025				REMARKS REMARQUES
1	6X4-42102-00	FITTING KIT EQUIPEMENT APPROPRIE	1				LM LM
2	68V-42725-10	GROMMET PASSE-FIL	1				
3	6X4-42121-10-4D	BRACKET SUPPORT	1				
4	90116-10175	BOLT, STUD GOUJON	2				
5	90185-10051	NUT, SELF-LOCKING ECROU, AUTO-BLOQUANT	4				
6	67G-48321-20	CABLE CABLE	1				
7	63D-48538-00	CLAMP, CABLE 1 COLLIER	1				
8	90468-10005	CLIP JONC	1				
9	67G-26301-10	THROTTLE CABLE ASSY CABLE D'ACCELERATEUR	1				
10	63D-48538-00	CLAMP, CABLE 1 COLLIER	1				
11	90468-10005	CLIP JONC	1				
12	90464-09M42	CLAMP BRIDE	1				
13	6X4-82586-20	EXT. WIRE HARNESS (L: 1.25M) EXT. FAISCEAU DE FILS L: 1,25M	1				
14	90447-22007	TUBE DURITE	1				
15	6G5-83557-00	TUBE TUBE	1				
16	6X4-42735-00	PROTECTOR PROTECTEUR	1				
17	63D-24367-00	CLAMP, FUEL PIPE 2 COLLIER DE DURITE A ESSENCE	1				
18	6X4-24364-00	STAY SUPPORT	1				
19	97095-06016	BOLT BOULON	2				
20	92995-06600	WASHER RONDELLE	2				
21	90465-13M24	CLAMP BRIDE	5				
22	90465-13M30	CLAMP BRIDE	1				

6X4 TILLER HANDLE FITTING KIT (F75,F90)



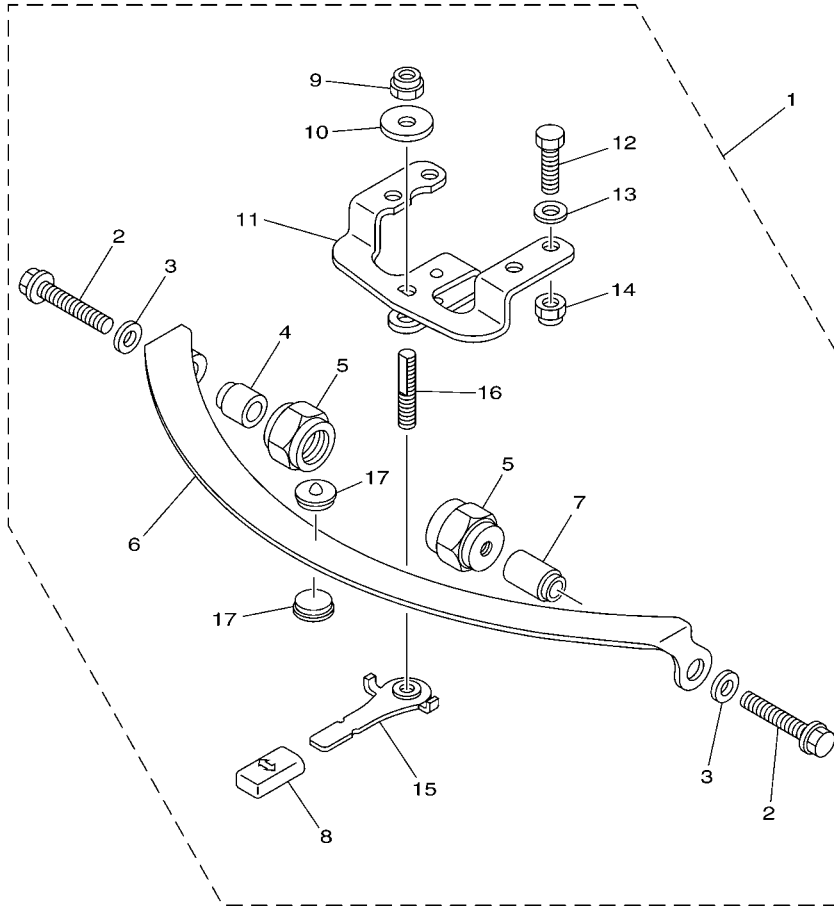
6011100-G620

FIG. 4 FITTING KIT 2

EQUIPEMENT APPROPRIE 2

REF. NO.	PART NO. N° PIECES	DESCRIPTION DESCRIPTION	6025				REMARKS REMARQUES
1	6X4-42102-10	FITTING KIT EQUIPEMENT APPROPRIE	1				LM LM
2	68V-42725-10	GROMMET PASSE-FIL	1				
3	6X4-42121-00-4D	BRACKET SUPPORT	1				
4	90185-10051	NUT, SELF-LOCKING ECROU,AUTO-BLOQUANT	2				
5	90116-10031	BOLT, STUD GOUJON	2				
6	67G-48321-20	CABLE CABLE	1				
7	63D-48538-00	CLAMP, CABLE 1 COLLIER	1				
8	90468-10005	CLIP JONC	1				
9	67G-26301-10	THROTTLE CABLE ASSY CABLE D'ACCELERATEUR	1				
10	63D-48538-00	CLAMP, CABLE 1 COLLIER	1				
11	90468-10005	CLIP JONC	1				
12	90464-09M42	CLAMP BRIDE	1				
13	6X4-82586-20	EXT. WIRE HARNESS (L: 1.25M) EXT, FAISCEAU DE FILS L: 1,25M	1				
14	6X4-81860-00	SWITCH ASSY COMMUTATEUR COMPLET	1				
15	90447-22007	TUBE DURITE	1				
16	6K3-83557-00	TUBE TUBE	1				
17	6X4-42735-00	PROTECTOR PROTECTEUR	1				
18	63D-24367-00	CLAMP, FUEL PIPE 2 COLLIER DE DURITE A ESSENCE	1				
19	6X4-24364-00	STAY SUPPORT	1				
20	97095-06016	BOLT BOULON	2				
21	92995-06600	WASHER RONDELLE	2				
22	90465-13M24	CLAMP BRIDE	5				
23	90465-13M30	CLAMP BRIDE	1				

**6X4 TILLER HANDLE FITTING KIT
STEERING FRICTION (F75,F90,F115)**



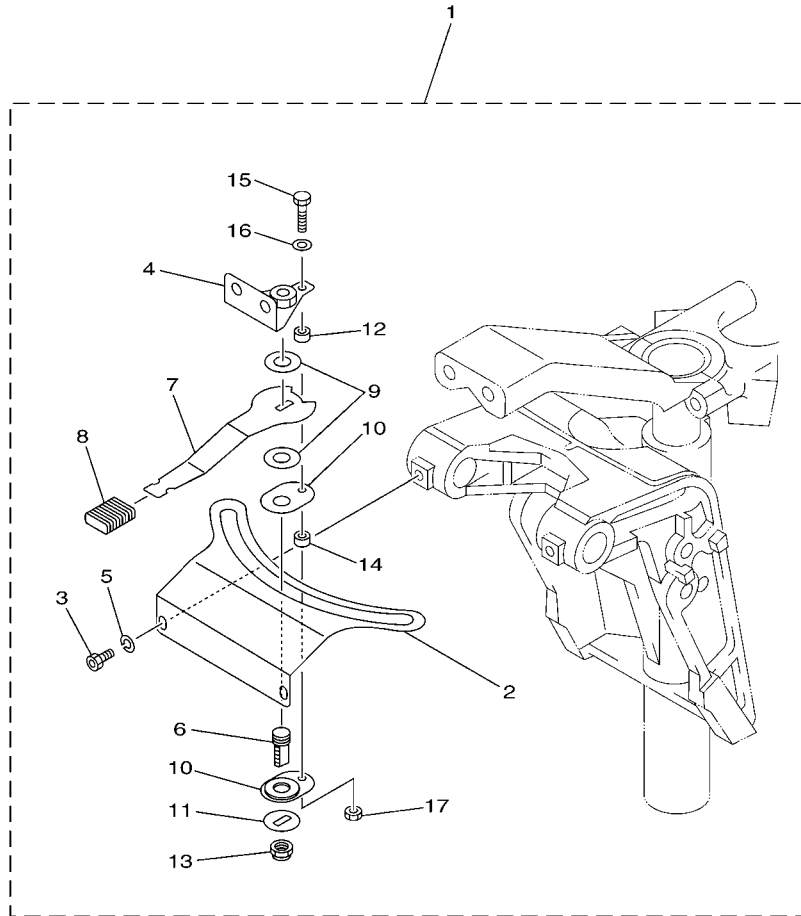
6011100-G630

FIG. 5 STEERING FRICTION 1

CUVETTE POIGNEE DE DIRECTION 1

REF. NO.	PART NO. N° PIECES	DESCRIPTION DESCRIPTION	6025				REMARKS REMARQUES
1	67G-42508-10	STEERING FRICTION ASSY DIRECTION FRICTION (ENS.)	1				
2	90119-08M74	.BOLT, WITH WASHER .BOULON, AVEC RONDELLE	2				
3	90201-08M01	.WASHER, PLATE .RONDELLE, PLATE	2				
4	67G-42541-00	.PIPE 1 .TUYAU 1	1				
5	67G-42546-00	.NUT .ECROU	2				
6	63D-42527-00	.PLATE, FRICTION .PLAQUE, FRICTION	1				
7	67G-42541-10	.PIPE 1 .TUYAU 1	1				
8	682-43318-01	.COVER .CAPUCHON	1				
9	90185-10M14	.NUT, SELF-LOCKING .ECROU,AUTO-BLOQUANT	1				
10	90201-10M76	.WASHER, PLATE .RONDELLE, PLATE	1				
11	6X4-42526-00	.PLATE, FRICTION .PLAQUE, FRICTION	1				
12	97095-08025	.BOLT .BOULON	2				
13	92995-08600	.WASHER .RONDELLE	2				
14	90185-08057	.NUT, SELF-LOCKING .ECROU,AUTO-BLOQUANT	2				
15	67G-42561-00	.KNOB, STEERING LOCK .BOUTON	1				
16	67G-42562-00	.SHAFT, STEERING LOCK .ARBRE,ANTIVOL DE DIRECTION	1				
17	63D-42528-00	.PLATE, FRICTION .PLAQUE, FRICTION	2				

**6X4 TILLER HANDLE FITTING KIT
STEERING FRICTION (F50, T50, F60, T60)**



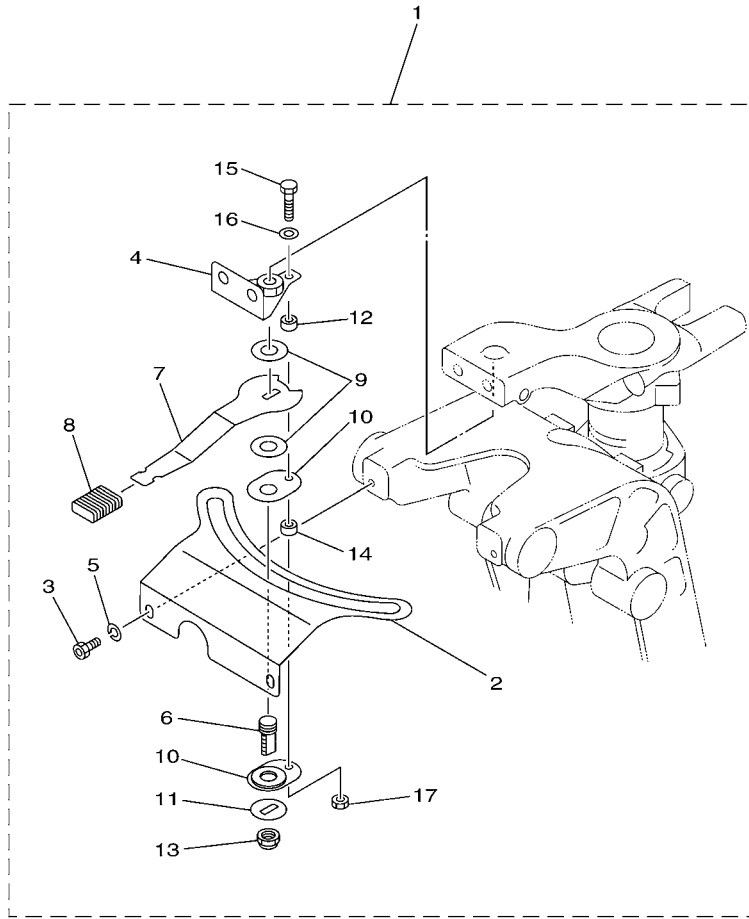
6011100-G650

FIG. 7 STEERING FRICTION 2

CUVETTE POIGNEE DE DIRECTION 2

REF. NO.	PART NO. N° PIECES	DESCRIPTION DESCRIPTION	QTY	REMARKS REMARQUES
1	6C5-42508-00	STEERING FRICTION ASSY DIRECTION FRICTION (ENS.)	1	
2	6C5-42527-00	.PLATE, FRICTION .PLAQUE, FRICTION	1	
3	90109-06M88	.BOLT .BOULON	2	
4	67C-42525-00	.PLATE, FRICTION .PLAQUE, FRICTION	1	
5	92990-06100	.WASHER, SPRING .RONDELLE, GROWER	2	
6	67C-42562-00	.SHAFT, STEERING LOCK .ARBRE, ANTIVOL DE DIRECTION	1	
7	67C-42561-00	.KNOB, STEERING LOCK .BOUTON	1	
8	689-43633-00	.COVER, TILT LEVER .COUVERCLE	1	
9	90202-10M56	.WASHER, PLATE .RONDELLE, PLATE	2	
10	65W-42528-00	.PLATE, FRICTION .PLAQUE, FRICTION	2	
11	90209-10M26	.WASHER .RONDELLE	1	
12	90387-05M05	.COLLAR .COLLERETTE	1	
13	90185-10M14	.NUT, SELF-LOCKING .ECROU, AUTO-BLOQUANT	1	
14	90387-05M11	.COLLAR .COLLERETTE	1	
15	97095-05020	.BOLT .BOULON	1	
16	92995-05600	.WASHER .RONDELLE	1	
17	95380-05600	.NUT .ECROU	1	

6X4 TILLER HANDLE FITTING KIT
STEERING FRICTION (F40)



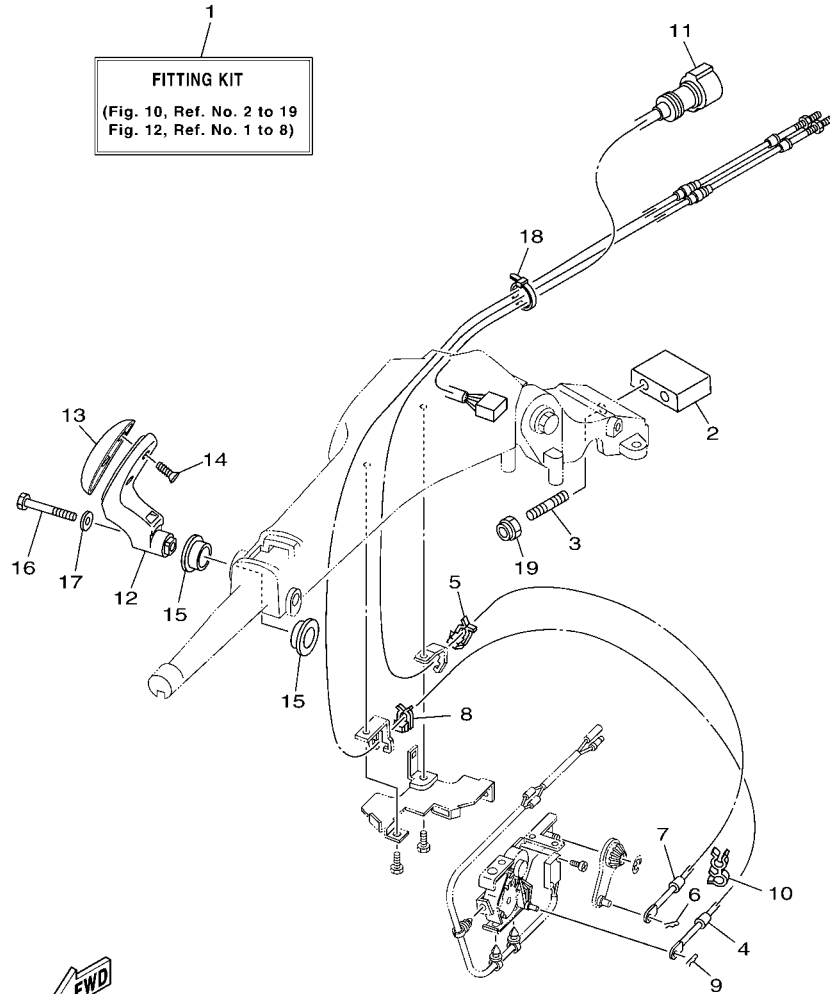
6011100-G670

FIG. 9 STEERING FRICTION 3

CUVETTE POIGNEE DE DIRECTION 3

REF. NO.	PART NO. N° PIECES	DESCRIPTION DESCRIPTION	QTY				REMARKS REMARQUES
1	67C-42508-03	STEERING FRICTION ASSY DIRECTION FRICTION (ENS.)	1				
2	67C-42527-03	.PLATE, FRICTION .PLAQUE, FRICTION	1				
3	90109-06M88	.BOLT .BOULON	2				
4	67C-42525-00	.PLATE, FRICTION .PLAQUE, FRICTION	1				
5	92990-06100	.WASHER, SPRING .RONDELLE, GROWER	2				
6	67C-42562-00	.SHAFT, STEERING LOCK .ARBRE, ANTIVOL DE DIRECTION	1				
7	67C-42561-00	.KNOB, STEERING LOCK .BOUTON	1				
8	689-43633-00	.COVER, TILT LEVER .COUVERCLE	1				
9	90202-10M56	.WASHER, PLATE .RONDELLE, PLATE	2				
10	65W-42528-00	.PLATE, FRICTION .PLAQUE, FRICTION	2				
11	90209-10M26	.WASHER .RONDELLE	1				
12	90387-05M05	.COLLAR .COLLERETTE	1				
13	90185-10M14	.NUT, SELF-LOCKING .ECROU, AUTO-BLOQUANT	1				
14	90387-05M11	.COLLAR .COLLERETTE	1				
15	97095-05020	.BOLT .BOULON	1				
16	92995-05600	.WASHER .RONDELLE	1				
17	95380-05600	.NUT .ECROU	1				

6X4 TILLER HANDLE FITTING KIT (90)



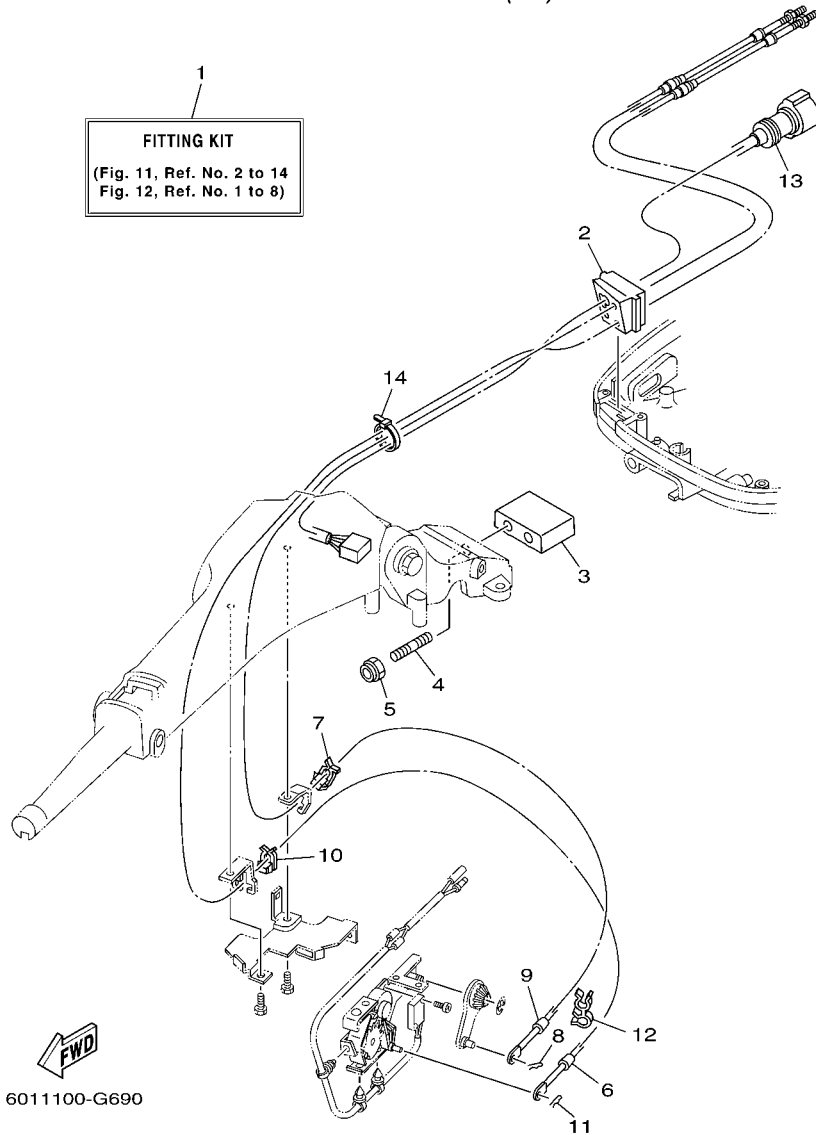
6011100-G680

FIG. 10 FITTING KIT 5

EQUIPEMENT APPROPRIE 5

REF. NO.	PART NO. N° PIECES	DESCRIPTION DESCRIPTION	6025				REMARKS REMARQUES
1	6X4-42102-41	FITTING KIT EQUIPEMENT APPROPPIE	1				LM LM
2	6X4-42121-00-4D	BRACKET SUPPORT	1				
3	90116-10031	BOLT, STUD GOUJON	2				
4	6H1-48321-11	CABLE CABLE	1				
5	63D-48538-00	CLAMP, CABLE 1 COLLIER	1				
6	90468-10005	CLIP JONC	1				
7	6H1-26301-01	THROTTLE CABLE ASSY CABLE D'ACCELERATEUR	1				
8	63D-48538-00	CLAMP, CABLE 1 COLLIER	1				
9	90468-10005	CLIP JONC	1				
10	90464-09M42	CLAMP BRIDE	1				
11	6X4-82586-30	EXTENSION, WIRE HARNESS EXTENSION, FAISCEAU DE FILS	1				
12	6X4-44159-10-4D	HANDLE, GEAR SHIFT POIGNEE, LEVIER D'EMBAYAGE	1				
13	6X4-44173-00	LEVER, SHIFT CONTROL POIGNEE, INVERSION	1				
14	97780-60920	SCREW, TAPPING VIS, TETE BOMBEE	2				
15	90386-26MA3	BUSH DOUILLE	1				
16	97095-08040	BOLT BOULON	1				
17	92995-08600	WASHER RONDELLE	1				
18	90465-13M36	CLAMP BRIDE	1				
19	90185-10051	NUT, SELF-LOCKING ECROU, AUTO-BLOQUANT	2				

6X4 TILLER HANDLE FITTING KIT (70)



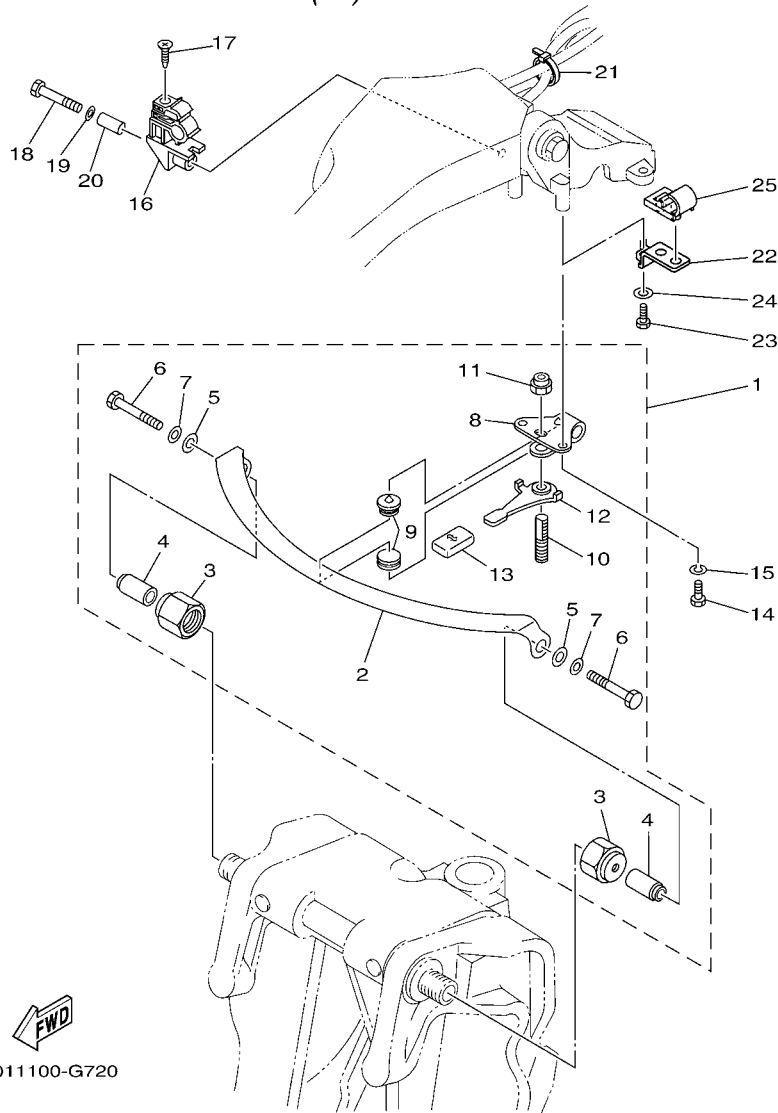
6011100-G690

FIG. 11 FITTING KIT 6

EQUIPEMENT APPROPRIE 6

REF. NO.	PART NO. N° PIECES	DESCRIPTION DESCRIPTION	QTY	REMARKS REMARQUES
1	6X4-42102-51	FITTING KIT EQUIPEMENT APPROPRIE	1	LM LM
2	6H3-42725-30	GROMMET PASSE-FIL	1	
3	6X4-42121-00-4D	BRACKET SUPPORT	1	
4	90116-10031	BOLT, STUD GOUJON	2	
5	90185-10051	NUT, SELF-LOCKING ECROU, AUTO-BLOQUANT	2	
6	6H3-48321-11	CABLE CABLE	1	
7	63D-48538-00	CLAMP, CABLE 1 COLLIER	1	
8	90468-10005	CLIP JONC	1	
9	6H3-26301-01	THROTTLE CABLE ASSY CABLE D'ACCELERATEUR	1	
10	63D-48538-00	CLAMP, CABLE 1 COLLIER	1	
11	90468-10005	CLIP JONC	1	
12	90464-09M42	CLAMP BRIDE	1	
13	6X4-82586-30	EXTENSION, WIRE HARNESS EXTENSION, FAISCEAU DE FILS	1	
14	90465-13M36	CLAMP BRIDE	1	

6X4 TILLER HANDLE FITTING KIT
STEERING FRICTION (50)



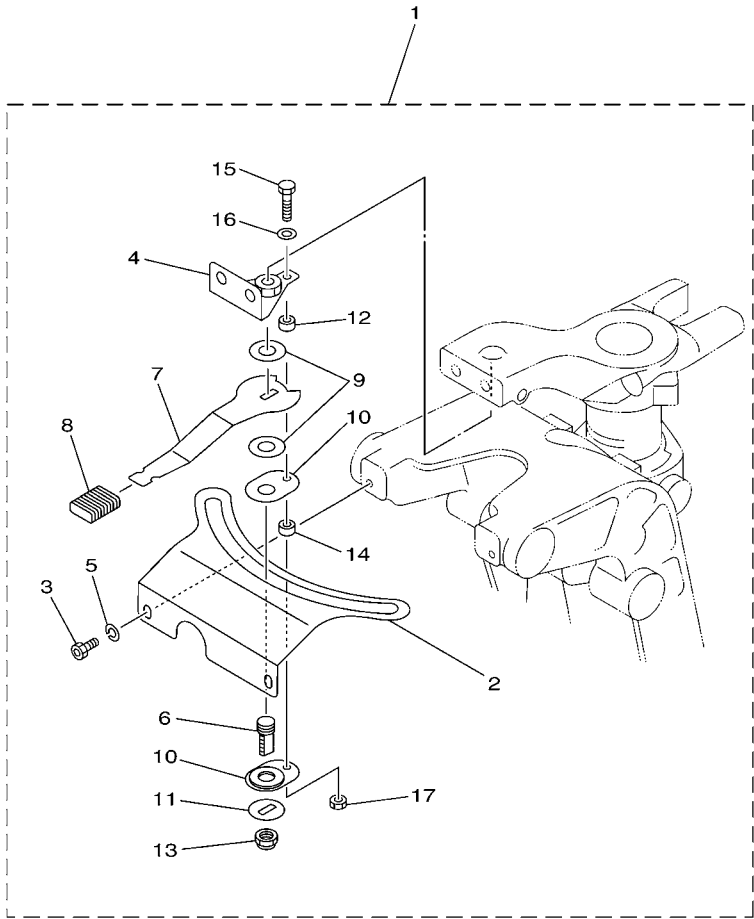
6011100-G720

FIG. 14 STEERING FRICTION 5

CUVETTE POIGNEE DE DIRECTION 5

REF. NO.	PART NO. N° PIECES	DESCRIPTION DESCRIPTION	6025			REMARKS REMARQUES
1	63D-42508-00	STEERING FRICTION ASSY DIRECTION FRICTION (ENS.)	1			
2	63D-42527-00	.PLATE, FRICTION .PLAQUE, FRICTION	1			
3	63D-42546-00	.NUT .ECROU	2			
4	63D-42541-00	.PIPE 1 .TUYAU 1	2			
5	90201-08M01	.WASHER, PLATE .RONDELLE, PLATE	2			
6	97095-08050	.BOLT .BOULON	2			
7	92990-08600	.WASHER, PLATE .RONDELLE, PLATE	2			
8	63D-42526-00	.PLATE, FRICTION .PLAQUE, FRICTION	1			
9	63D-42528-00	.PLATE, FRICTION .PLAQUE, FRICTION	2			
10	63D-42562-00	.SHAFT, STEERING LOCK .ARBRE, ANTIVOL DE DIRECTION	1			
11	90185-10M01	.NUT, SELF-LOCKING .ECROU, AUTO-BLOQUANT	1			
12	63D-42561-00	.KNOB, STEERING LOCK .BOUTON	1			
13	682-43318-01	.COVER .CAPUCHON	1			
14	97095-06016	BOLT BOULON	2			
15	92995-06100	WASHER, SPRING RONDELLE, GROWER	2			
16	63D-82361-00	CLAMP, CORD COLLIER, CORDON	1			
17	90161-06M00	SCREW, TAPPING VIS, TETE FRAISEE	1			
18	97095-06035	BOLT BOULON	1			
19	92995-06600	WASHER RONDELLE	1			
20	90387-06M26	COLLAR COLLERETTE	1			
21	90465-13M36	CLAMP BRIDE	1			
22	63D-24364-10	STAY SUPPORT	1			
23	97095-06016	BOLT BOULON	1			
24	92995-06600	WASHER RONDELLE	1			
25	63D-24367-00	CLAMP, FUEL PIPE 2 COLLIER DE DURITE A ESSENCE	1			

6X4 TILLER HANDLE FITTING KIT
STEERING FRICTION (F30-FI / F40-FI)



601S10S-H160

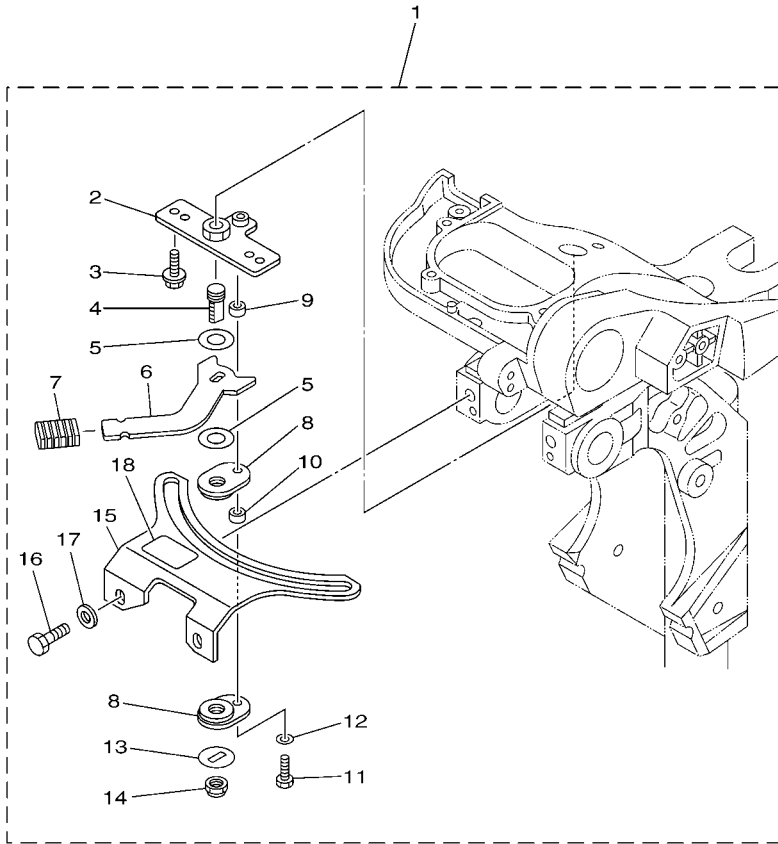
FIG. 16 STEERING FRICTION 6

CUVETTE POIGNEE DE DIRECTION 6

REF. NO.	PART NO. N° PIECES	DESCRIPTION DESCRIPTION	602				REMARKS REMARQUES
1	67C-42508-03	STEERING FRICTION ASSY DIRECTION FRICTION (ENS.)	1				
2	67C-42527-03	.PLATE, FRICTION .PLAQUE, FRICTION	1				
3	90109-06M88	.BOLT .BOULON	2				
4	67C-42525-00	.PLATE, FRICTION .PLAQUE, FRICTION	1				
5	92990-06100	.WASHER, SPRING .RONDELLE, GROWER	2				
6	67C-42562-00	.SHAFT, STEERING LOCK .ARBRE, ANTIVOL DE DIRECTION	1				
7	67C-42561-00	.KNOB, STEERING LOCK .BOUTON	1				
8	689-43633-00	.COVER, TILT LEVER .COUVERCLE	1				
9	90202-10M56	.WASHER, PLATE .RONDELLE, PLATE	2				
10	65W-42528-00	.PLATE, FRICTION .PLAQUE, FRICTION	2				
11	90209-10M26	.WASHER .RONDELLE	1				
12	90387-05M05	.COLLAR .COLLERETTE	1				
13	90185-10M14	.NUT, SELF-LOCKING .ECROU, AUTO-BLOQUANT	1				
14	90387-05M11	.COLLAR .COLLERETTE	1				
15	97095-05020	.BOLT .BOULON	1				
16	92995-05600	.WASHER .RONDELLE	1				
17	95380-05600	.NUT .ECROU	1				

STEERING FRICTION

Part No.	Applicable model
6AH-42508-00	F9.9F(F9.9), FT9.9G(T9.9), F13.5B, F15C (F15), F20B (F20) MT
6AH-42508-10	FT9.9G(T9.9), F13.5B, F15C (F15), F20B (F20) PT



601S10S-H170

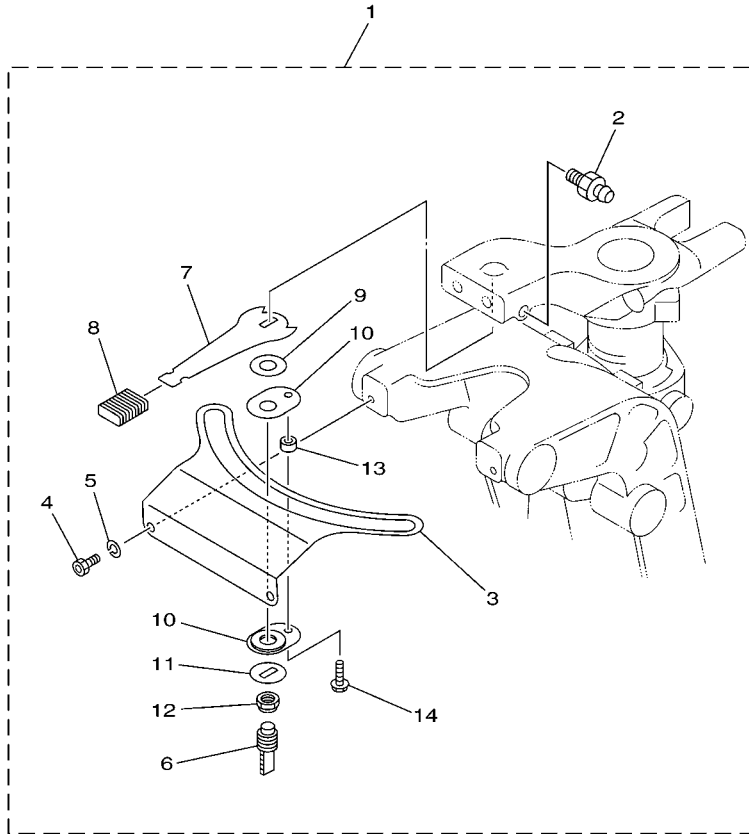
FIG. 17 STEERING FRICTION 7

CUVETTE POIGNEE DE DIRECTION 7

REF. NO.	PART NO. N° PIECES	DESCRIPTION DESCRIPTION	602				REMARKS REMARQUES
1	6AH-42508-00	STEERING FRICTION ASSY DIRECTION FRICTION (ENS.)	1				UR UR
	6AH-42508-10	STEERING FRICTION ASSY DIRECTION FRICTION (ENS.)	1				UR UR
2	68T-42525-01	.PLATE, FRICTION .PLAQUE, FRICTION	1				
3	90119-05018	.BOLT, WITH WASHER .BOULON, AVEC RONDELLE	2				
4	67C-42562-00	.SHAFT, STEERING LOCK .ARBRE, ANTIVOL DE DIRECTION	1				
5	90202-10M56	.WASHER, PLATE .RONDELLE, PLATE	2				
6	68T-42561-00	.KNOB, STEERING LOCK .BOUTON	1				
7	689-43633-00	.COVER, TILT LEVER .COUVERCLE	1				
8	65W-42528-00	.PLATE, FRICTION .PLAQUE, FRICTION	2				
9	90387-05M05	.COLLAR .COLLERETTE	1				
10	90387-05M11	.COLLAR .COLLERETTE	1				
11	97095-05020	.BOLT .BOULON	1				
12	92995-05600	.WASHER .RONDELLE	1				
13	90209-10M26	.WASHER .RONDELLE	1				
14	90185-10M14	.NUT, SELF-LOCKING .ECROU, AUTO-BLOQUANT	1				
15	6AH-42527-00	.PLATE, FRICTION .PLAQUE, FRICTION	1				
16	90101-08022	.BOLT .BOULON	2				
17	90201-08065	.WASHER, PLATE .RONDELLE, PLATE	2				
18	68T-43155-00	.MARK 1 .ETIQUETTE 1	1				FOR 6AH-42508-00 FOR 6AH-42508-00

STEERING FRICTION

Part No.	Applicable model
65W-42508-00	F25A (F25), F25D (F25), E40X



601S10S-H180

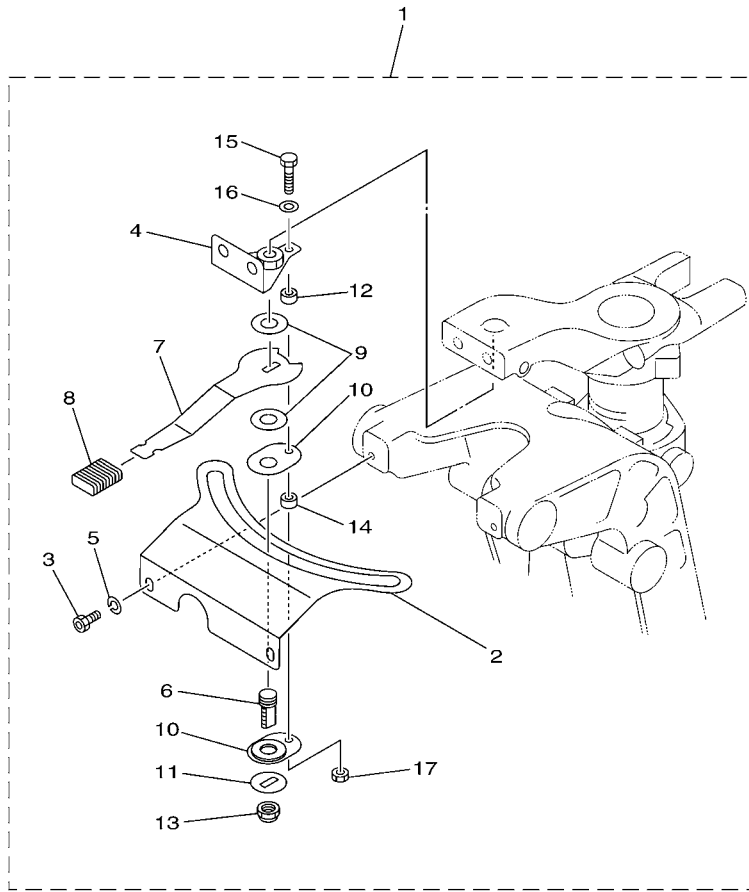
FIG. 18 STEERING FRICTION 8

CUVETTE POIGNEE DE DIRECTION 8

REF. NO.	PART NO. N° PIECES	DESCRIPTION DESCRIPTION	QTY	REMARKS REMARQUES
1	65W-42508-00	STEERING FRICTION ASSY DIRECTION FRICTION (ENS.)	1	
2	93700-06M03	.NIPPLE, GREASE .PION	1	
3	65W-42527-00	.PLATE, FRICTION .PLAQUE, FRICTION	1	
4	90109-06M88	.BOLT .BOULON	2	
5	92990-06100	.WASHER, SPRING .RONDELLE, GROWER	2	
6	65W-42562-00	.SHAFT, STEERING LOCK .ARBRE, ANTIVOL DE DIRECTION	1	
7	65W-42561-00	.KNOB, STEERING LOCK .BOUTON	1	
8	689-43633-00	.COVER, TILT LEVER .COUVERCLE	1	
9	90202-10M56	.WASHER, PLATE .RONDELLE, PLATE	1	
10	65W-42528-00	.PLATE, FRICTION .PLAQUE, FRICTION	2	
11	90209-10M26	.WASHER .RONDELLE	1	
12	90185-10M14	.NUT, SELF-LOCKING .ECROU, AUTO-BLOQUANT	1	
13	90387-05M11	.COLLAR .COLLERETTE	1	
14	90109-05M89	.BOLT .BOULON	1	

STEERING FRICTION

Part No.	Applicable model
67C-42508-03	F30A (F30), F30B (F30), F40B (F40), F40F(F40)



601S10S-H190

FIG. 19 STEERING FRICTION 9

CUVETTE POIGNEE DE DIRECTION 9

REF. NO.	PART NO. N° PIECES	DESCRIPTION DESCRIPTION	602				REMARKS REMARQUES
1	67C-42508-03	STEERING FRICTION ASSY DIRECTION FRICTION (ENS.)	1				
2	67C-42527-03	.PLATE, FRICTION .PLAQUE, FRICTION	1				
3	90109-06M88	.BOLT .BOULON	2				
4	67C-42525-00	.PLATE, FRICTION .PLAQUE, FRICTION	1				
5	92990-06100	.WASHER, SPRING .RONDELLE, GROWER	2				
6	67C-42562-00	.SHAFT, STEERING LOCK .ARBRE, ANTIVOL DE DIRECTION	1				
7	67C-42561-00	.KNOB, STEERING LOCK .BOUTON	1				
8	689-43633-00	.COVER, TILT LEVER .COUVERCLE	1				
9	90202-10M56	.WASHER, PLATE .RONDELLE, PLATE	2				
10	65W-42528-00	.PLATE, FRICTION .PLAQUE, FRICTION	2				
11	90209-10M26	.WASHER .RONDELLE	1				
12	90387-05M05	.COLLAR .COLLERETTE	1				
13	90185-10M14	.NUT, SELF-LOCKING .ECROU, AUTO-BLOQUANT	1				
14	90387-05M11	.COLLAR .COLLERETTE	1				
15	97095-05020	.BOLT .BOULON	1				
16	92995-05600	.WASHER .RONDELLE	1				
17	95380-05600	.NUT .ECROU	1				

STEERING FRICTION

Part No.	Applicable model
63D-42508-00	FT50C, F50D, 40V, 50H (50), 40Y

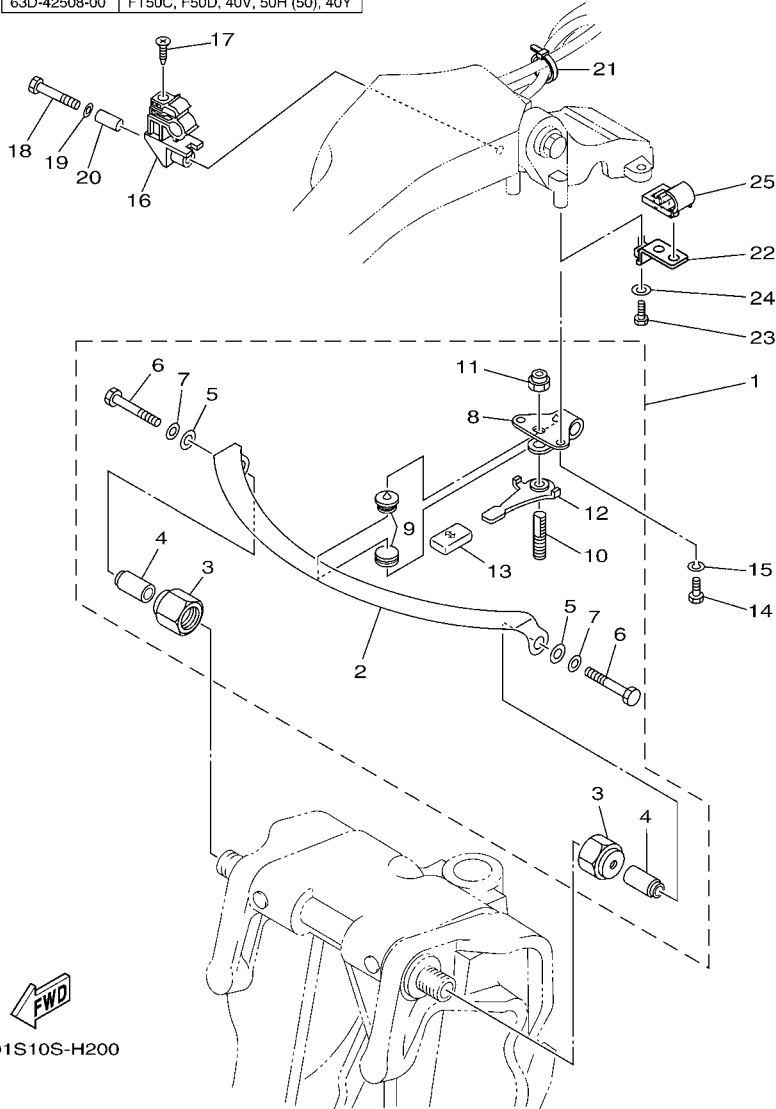


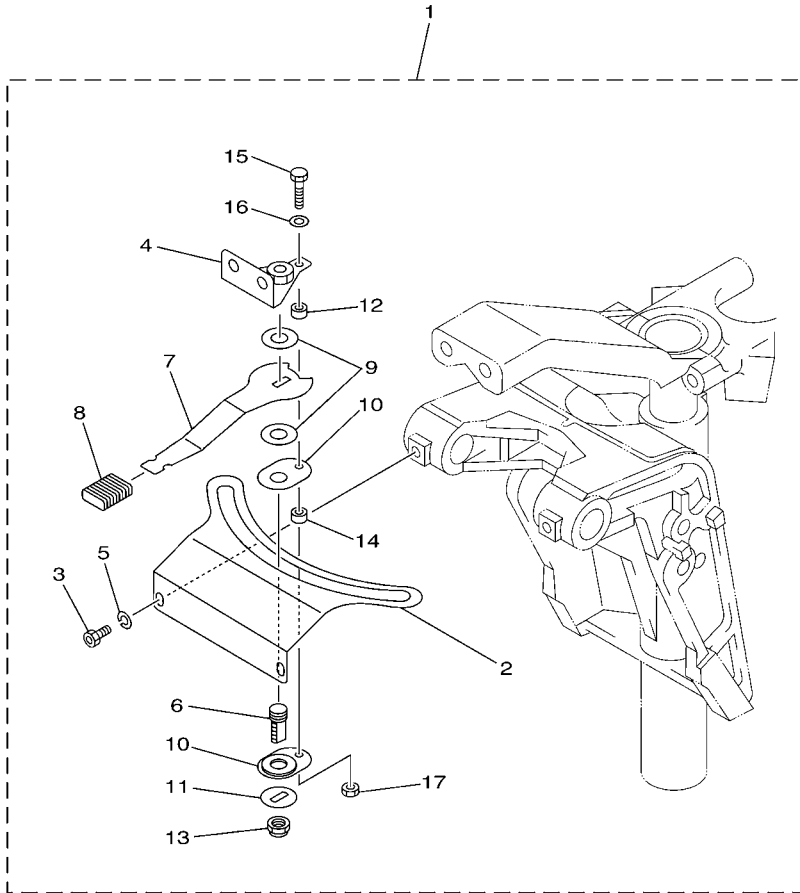
FIG. 20 STEERING FRICTION 10

CUVETTE POIGNEE DE DIRECTION10

REF. NO.	PART NO. N° PIECES	DESCRIPTION DESCRIPTION	602S				REMARKS REMARQUES
1	63D-42508-00	STEERING FRICTION ASSY DIRECTION FRICTION (ENS.)	1				
2	63D-42527-00	.PLATE, FRICTION .PLAQUE, FRICTION	1				
3	63D-42546-00	.NUT .ECROU	2				
4	63D-42541-00	.PIPE 1 .TUYAU 1	2				
5	90201-08M01	.WASHER, PLATE .RONDELLE, PLATE	2				
6	97095-08050	.BOLT .BOULON	2				
7	92990-08600	.WASHER, PLATE .RONDELLE, PLATE	2				
8	63D-42526-00	.PLATE, FRICTION .PLAQUE, FRICTION	1				
9	63D-42528-00	.PLATE, FRICTION .PLAQUE, FRICTION	2				
10	63D-42562-00	.SHAFT, STEERING LOCK .ARBRE, ANTIVOL DE DIRECTION	1				
11	90185-10M01	.NUT, SELF-LOCKING .ECROU, AUTO-BLOQUANT	1				
12	63D-42561-00	.KNOB, STEERING LOCK .BOUTON	1				
13	682-43318-01	.COVER .CAPUCHON	1				
14	97095-06016	BOLT BOULON	2				
15	92995-06100	WASHER, SPRING RONDELLE, GROWER	2				
16	63D-82361-00	CLAMP, CORD COLLIER, CORDON	1				
17	90161-06M00	SCREW, TAPPING VIS, TETE FRAISEE	1				
18	97095-06035	BOLT BOULON	1				
19	92995-06600	WASHER RONDELLE	1				
20	90387-06M26	COLLAR COLLERETTE	1				
21	90465-13M36	CLAMP BRIDE	1				
22	63D-24364-10	STAY SUPPORT	1				
23	97095-06016	BOLT BOULON	1				
24	92995-06600	WASHER RONDELLE	1				
25	63D-24367-00	CLAMP, FUEL PIPE 2 COLLIER DE DURITE A ESSENCE	1				

STEERING FRICTION

Part No.	Applicable model
6C5-42508-00	F50F (F50), FT50G (T50), F60C (F60), FT60D (T60), F40D



601S10S-H220

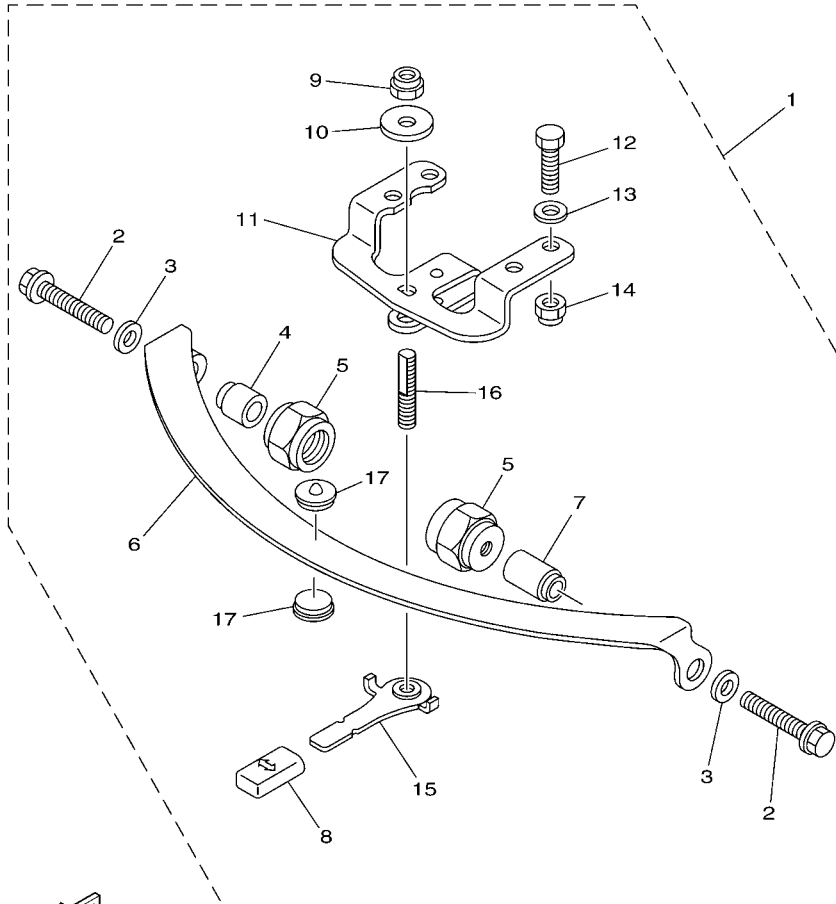
FIG. 22 STEERING FRICTION 12

CUVETTE POIGNEE DE DIRECTION12

REF. NO.	PART NO. N° PIECES	DESCRIPTION DESCRIPTION	QTY	REMARKS REMARQUES
1	6C5-42508-00	STEERING FRICTION ASSY DIRECTION FRICTION (ENS.)	1	
2	6C5-42527-00	.PLATE, FRICTION .PLAQUE, FRICTION	1	
3	90109-06M88	.BOLT .BOULON	2	
4	67C-42525-00	.PLATE, FRICTION .PLAQUE, FRICTION	1	
5	92990-06100	.WASHER, SPRING .RONDELLE, GROWER	2	
6	67C-42562-00	.SHAFT, STEERING LOCK .ARBRE, ANTIVOL DE DIRECTION	1	
7	67C-42561-00	.KNOB, STEERING LOCK .BOUTON	1	
8	689-43633-00	.COVER, TILT LEVER .COUVERCLE	1	
9	90202-10M56	.WASHER, PLATE .RONDELLE, PLATE	2	
10	65W-42528-00	.PLATE, FRICTION .PLAQUE, FRICTION	2	
11	90209-10M26	.WASHER .RONDELLE	1	
12	90387-05M05	.COLLAR .COLLERETTE	1	
13	90185-10M14	.NUT, SELF-LOCKING .ECROU, AUTO-BLOQUANT	1	
14	90387-05M11	.COLLAR .COLLERETTE	1	
15	97095-05020	.BOLT .BOULON	1	
16	92995-05600	.WASHER .RONDELLE	1	
17	95380-05600	.NUT .ECROU	1	

STEERING FRICTION

Part No.	Applicable model
67G-42508-10	F75B (F75), F80B, F90B (F90), F95A, F100D, F100B, F115A (F115), F75C, F80C



601S10S-H230

FIG. 23 STEERING FRICTION 13

CUVETTE POIGNEE DE DIRECTION13

REF. NO.	PART NO. N° PIECES	DESCRIPTION DESCRIPTION	602				REMARKS REMARQUES
1	67G-42508-10	STEERING FRICTION ASSY DIRECTION FRICTION (ENS.)	1				
2	90119-08M74	.BOLT, WITH WASHER .BOULON, AVEC RONDELLE	2				
3	90201-08M01	.WASHER, PLATE .RONDELLE, PLATE	2				
4	67G-42541-00	.PIPE 1 .TUYAU 1	1				
5	67G-42546-00	.NUT .ECROU	2				
6	63D-42527-00	.PLATE, FRICTION .PLAQUE, FRICTION	1				
7	67G-42541-10	.PIPE 1 .TUYAU 1	1				
8	682-43318-01	.COVER .CAPUCHON	1				
9	90185-10M14	.NUT, SELF-LOCKING .ECROU,AUTO-BLOQUANT	1				
10	90201-10M76	.WASHER, PLATE .RONDELLE, PLATE	1				
11	6X4-42526-00	.PLATE, FRICTION .PLAQUE, FRICTION	1				
12	97095-08025	.BOLT .BOULON	2				
13	92995-08600	.WASHER .RONDELLE	2				
14	90185-08057	.NUT, SELF-LOCKING .ECROU,AUTO-BLOQUANT	2				
15	67G-42561-00	.KNOB, STEERING LOCK .BOUTON	1				
16	67G-42562-00	.SHAFT, STEERING LOCK .ARBRE,ANTIVOL DE DIRECTION	1				
17	63D-42528-00	.PLATE, FRICTION .PLAQUE, FRICTION	2				

NUMERICAL INDEX
INDEX NUMERIQUE

PART NO. N° PIECES	REF. NO.	PART NO. N° PIECES	REF. NO.	PART NO. N° PIECES	REF. NO.	PART NO. N° PIECES	REF. NO.	PART NO. N° PIECES	REF. NO.	PART NO. N° PIECES	REF. NO.
6X4-14137-00	1 - 26	6C5-42508-00	22 - 1	63D-42541-00	20 - 4	689-43633-00	9 - 8	6X4-81860-00	4 - 14	90185-08057	21 - 8
6X4-24364-00	3 - 18	692-42508-01	12 - 1	67G-42541-00	5 - 4		16 - 8		6 - 12		23 - 14
	4 - 19		21 - 1		23 - 4		17 - 7		15 - 11	90185-10051	3 - 5
63D-24364-10	14 - 22	67C-42508-03	9 - 1	67G-42541-10	5 - 7		18 - 8	6X4-81942-00	2 - 13		4 - 4
	20 - 22		16 - 1		23 - 7		19 - 8	63D-82361-00	14 - 16		6 - 3
63D-24367-00	3 - 17		19 - 1	63D-42546-00	14 - 3		22 - 8		20 - 16		8 - 3
	4 - 18	67G-42508-10	5 - 1		20 - 3	6X4-44100-00	1 - 21	6X4-82510-00	2 - 1		10 - 19
	14 - 25		23 - 1	67G-42546-00	5 - 5	6X4-44102-00	1 - 23	6X4-82540-00	1 - 28		11 - 5
	20 - 25	6AH-42508-10	17 - 1		23 - 5	6X4-44132-00	1 - 25	682-82556-00	2 - 5		13 - 3
69W-26301-00	6 - 7	692-42515-01	12 - 6	63D-42561-00	14 - 12	6X4-44139-01-94	1 - 9	6X4-82563-00	2 - 7		15 - 2
	8 - 7		21 - 6		20 - 12	6X4-44159-00-4D	1 - 42	69W-82575-00	2 - 4	90185-10M01	14 - 11
	15 - 6	663-42518-00	12 - 2	65W-42561-00	18 - 7	6X4-44159-10-4D	10 - 12	676-82577-00	2 - 2		20 - 11
63D-26301-01	13 - 7		21 - 2	67C-42561-00	7 - 7	6X4-44173-00	1 - 43	689-8257Y-00	2 - 6	90185-10M14	5 - 9
6H1-26301-01	10 - 7	67C-42525-00	7 - 4		9 - 7		10 - 13	6X4-82586-00	8 - 11		7 - 13
6H3-26301-01	11 - 9		9 - 4		16 - 7	6X4-44177-00	1 - 12		13 - 11		9 - 13
67G-26301-10	3 - 9		16 - 4		19 - 7	6X4-44188-00	1 - 15	6X4-82586-10	6 - 11		16 - 13
	4 - 9		19 - 4		22 - 7	6G8-44191-00	1 - 45		15 - 10		17 - 14
6X4-26367-00	1 - 36		22 - 4	67G-42561-00	5 - 15	6X4-47731-00	1 - 24	6X4-82586-20	3 - 13		18 - 12
	1 - 39	68T-42525-01	17 - 2		23 - 15	6A5-48129-10	1 - 29		4 - 13		19 - 13
6X4-41291-00	1 - 8	63D-42526-00	14 - 8	68T-42561-00	17 - 6	6X4-48154-00	1 - 18	6X4-82586-30	10 - 11		22 - 13
6X4-42101-02	1 - 1		20 - 8	63D-42562-00	14 - 10	6X4-48215-00	1 - 4		11 - 13		23 - 9
6X4-42102-00	3 - 1	6X4-42526-00	5 - 11		20 - 10	6X4-48261-00	1 - 27	6X4-83383-00	2 - 10	90185-12M12	1 - 59
6X4-42102-10	4 - 1		23 - 11	65W-42562-00	18 - 6	63D-48321-11	13 - 4	6X4-83386-00	2 - 11	90201-08065	17 - 17
6X4-42102-21	6 - 1	63D-42527-00	5 - 6	67C-42562-00	7 - 6	67C-48321-11	6 - 4	6G5-83557-00	3 - 15	90201-08M01	5 - 3
6X4-42102-31	8 - 1		14 - 2		9 - 6		8 - 4	6K3-83557-00	4 - 16		14 - 5
6X4-42102-41	10 - 1		20 - 2		16 - 6		15 - 3	90101-08022	17 - 16		20 - 5
6X4-42102-51	11 - 1		23 - 6		17 - 4	6H1-48321-11	10 - 4	90101-12014	1 - 52		23 - 3
6X4-42102-61	13 - 1	65W-42527-00	18 - 3		19 - 6	6H3-48321-11	11 - 6	90109-05M89	18 - 14	90201-10M76	5 - 10
6X4-42102-70	15 - 1	6AH-42527-00	17 - 15		22 - 6	67G-48321-20	3 - 6	90109-06M88	7 - 3		23 - 10
6X4-42111-02-4D	1 - 2	6C5-42527-00	7 - 2	67G-42562-00	5 - 16		4 - 6		9 - 3	90201-12035	1 - 56
6X4-42115-00	1 - 22		22 - 2		23 - 16	63D-48538-00	3 - 7		16 - 3	90202-10M56	7 - 9
6X4-42119-01	1 - 5	67C-42527-03	9 - 2	6H4-42724-20	13 - 2		3 - 10		18 - 4		9 - 9
6X4-42121-00-4D	4 - 3		16 - 2	6X4-42725-01	1 - 50		4 - 7		19 - 3		16 - 9
	10 - 2		19 - 2	68V-42725-10	3 - 2		4 - 10		22 - 3		17 - 5
	11 - 3	63D-42528-00	5 - 17		4 - 2		6 - 5	90116-10031	4 - 5		18 - 9
6X4-42121-10-4D	3 - 3		14 - 9	62Y-42725-30	8 - 2		6 - 8		10 - 3		19 - 9
63D-42121-22-4D	1 - 51		20 - 9	6C5-42725-30	6 - 2		8 - 5		11 - 4		22 - 9
63D-42126-00	1 - 17		23 - 17	6H3-42725-30	11 - 2		8 - 8	90116-10175	3 - 4	90206-12M22	1 - 54
6X4-42128-00	1 - 13	65W-42528-00	7 - 10	6X4-42728-10	1 - 60		10 - 5	90119-05018	17 - 3	90209-10M26	7 - 11
6X4-42131-01	1 - 47		9 - 10	6X4-42735-00	3 - 16		10 - 8	90119-08M74	5 - 2		9 - 11
6X4-42137-00	1 - 7		16 - 10		4 - 17		11 - 7		23 - 2		16 - 11
6X4-42159-00	1 - 41		17 - 8	6X4-42821-00	1 - 30		11 - 10	90152-05006	1 - 10		17 - 13
6X4-42177-00	1 - 6		18 - 10	68T-43155-00	17 - 18		13 - 5	90161-06M00	14 - 17		18 - 11
63D-42508-00	14 - 1		19 - 10	682-43318-01	5 - 8		13 - 8		20 - 17		19 - 11
	20 - 1		22 - 10		14 - 13		15 - 4	90175-06003	12 - 5		22 - 11
65W-42508-00	18 - 1	663-42528-00	12 - 3		20 - 13		15 - 7		21 - 5	90386-08032	1 - 16
6AH-42508-00	17 - 1		21 - 3		23 - 8	6X4-48538-00	1 - 35	90185-08057	5 - 14	90386-12003	1 - 57
6C5-42508-00	7 - 1	63D-42541-00	14 - 4	689-43633-00	7 - 8	6X4-48538-10	1 - 38		12 - 8	90386-26MA3	1 - 46

NUMERICAL INDEX
INDEX NUMERIQUE

PART NO. N° PIECES	REF. NO.	PART NO. N° PIECES	REF. NO.	PART NO. N° PIECES	REF. NO.	PART NO. N° PIECES	REF. NO.	PART NO. N° PIECES	REF. NO.	PART NO. N° PIECES	REF. NO.
90386-26MA3	10 - 15	90468-10005	10 - 9	95380-05600	19 - 17						
90387-05M05	7 - 12		11 - 8		22 - 17						
	9 - 12		11 - 11	95380-06600	1 - 19						
	16 - 12		13 - 6	97080-06035	12 - 4						
	17 - 9		13 - 9		21 - 4						
	19 - 12		15 - 5	97095-05020	7 - 15						
	22 - 12		15 - 8		9 - 15						
90387-05M11	7 - 14	90501-23215	1 - 14		16 - 15						
	9 - 14	91490-20010	1 - 11		17 - 11						
	16 - 14		1 - 20		19 - 15						
	17 - 10	92990-06100	7 - 5		22 - 15						
	18 - 13		9 - 5	97095-06014	1 - 37						
	19 - 14		16 - 5		1 - 40						
	22 - 14		18 - 5		2 - 12						
90387-06M26	14 - 20		19 - 5	97095-06016	3 - 19						
	20 - 20		22 - 5		4 - 20						
90387-12M02	1 - 55	92990-06600	2 - 9		14 - 14						
90447-22007	3 - 14	92990-08600	12 - 7		14 - 23						
	4 - 15		14 - 7		20 - 14						
90464-08M07	2 - 3		20 - 7		20 - 23						
90464-09M42	3 - 12		21 - 7	97095-06030	1 - 33						
	4 - 12	92990-12200	1 - 53	97095-06035	14 - 18						
	6 - 10	92990-12600	1 - 58		20 - 18						
	8 - 10	92995-05600	7 - 16	97095-08025	5 - 12						
	10 - 10		9 - 16		23 - 12						
	11 - 12		16 - 16	97095-08040	1 - 31						
	13 - 10		17 - 12		10 - 16						
	15 - 9		19 - 16	97095-08050	14 - 6						
90465-13M24	3 - 21		22 - 16		20 - 6						
	4 - 22	92995-06100	14 - 15	97780-60920	1 - 44						
90465-13M30	3 - 22		20 - 15		10 - 14						
	4 - 23	92995-06600	1 - 34	97880-06016	2 - 8						
90465-13M36	6 - 13		1 - 49	97885-06016	1 - 48						
	8 - 12		3 - 20								
	10 - 18		4 - 21								
	11 - 14		14 - 19								
	14 - 21		14 - 24								
	15 - 12		20 - 19								
	20 - 21		20 - 24								
90468-10005	3 - 8	92995-08600	1 - 32								
	3 - 11		5 - 13								
	4 - 8		10 - 17								
	4 - 11		23 - 13								
	6 - 6	93700-06M03	1 - 3								
	6 - 9		18 - 2								
	8 - 6	95380-05600	7 - 17								
	8 - 9		9 - 17								
	10 - 6		16 - 17								