

PARTS CATALOGUE CATALOGUE DE PIÈCES DÉTACHÉES

F15AEP'02(69A1)

2A69A-300F1

YAMAHA
GENUINE
Parts & Accessories

2017/8/17

NEWS NO.	DATE	COMMENT
PE0-OM-120045	Jul.,2,2012	MOD:FIG.7 CARBURETOR LIST/ILLUSTRATION REVISION
PE0-OM-150012	Jun.,26,2015	MOD:FIG.7 CARBURETOR LIST REVISION
PE0-OM-160028	Nov.,8,2016	COR:FIG.19 POWER TILT ASSY LIST/ILLUSTRATION CORRECTION
PE0-OM-170032	Aug.,10,2017	COR:FIG.7 CARBURETOR ILLUSTRATION CORRECTION

FOREWORD

This Parts Catalogue is related to the parts for the model(s) in the below frame. When you are ordering replacement parts, please refer to this Parts Catalogue and quote both part numbers and part names correctly.

F15AEP'02(69A1)

1. Modifications or additions which have been made after issue of the Parts Catalogue will be announced in the Yamaha Parts News.
It is advisable that you make necessary corrections to the Parts Catalogue according to the Yamaha Parts News.

2. Abbreviations

The Following abbreviations are used in this Parts Catalogue.

“UR” Use specified parts number.

“UN” Use as many as needed.

“AP” Alternate Parts

“LM” Local Made

(Parts need to be ordered locally)

“O/S” Over Size

3. Parts, which are to be supplied in an assembly, are listed with a dot(.) in front of the part name as shown below.

EXAMPLE

CARBURETOR ASSY

.JET, PILOT

.NOZZLE, MAIN

4. Number of component for assembly

The numeral appearing to the right of each component part indicates the quantity of parts for each assembly unit.

EXAMPLE

PART NO.	DESCRIPTION	□	田	田	田	REMARKS
6E0-85500-70	C.D.I. MAGNETO ASSY	1				
6E0-85550-70	.ROTOR ASSY	1				
6E0-15723-00-94.	.PULLY, STARTER	1				

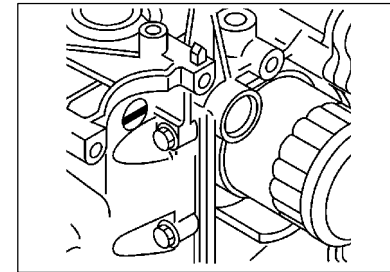
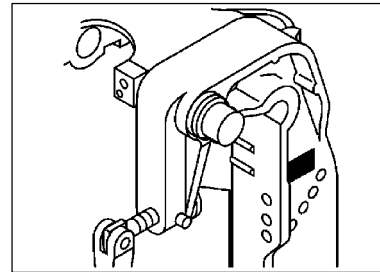
5. Quantity Column Information

NAME for Q'TY COLUMN	APPLICABLE MODEL
69A1	F15AEP

6. Applicable Starting Serial No. and Color Code

1) Engine Starting Sserial No.

F15AEP	66M S : 700231
F15AEP	66M L : 800424



2) Color Code

Color Code	Color Name	Abbreviation
004D	DARK BLUISH GRAY METALLIC 2	DBNM2

7. Note that the illustrations for reference in finding parts numbers, not to be used for assembling. When assembling, please use the applicable service manual.

8. The asterisk (*) before a reference number indicates modification items after the first edition.

CONTENTS

SHEET 1/2

TOP COWLING	A4
CYLINDER. CRANKCASE 1	A5
CRANKSHAFT. PISTON	A7
CYLINDER. CRANKCASE 2	B1
VALVE	B2
INTAKE	B3
CARBURETOR	B4
OIL PUMP	B6
FUEL	B7
STARTER	C2
GENERATOR	C3
ELECTRICAL 1	C4
ELECTRICAL 2	C6
STARTING MOTOR	D1
BOTTOM COWLING	D2
CONTROL	D4
BRACKET 1	D6
BRACKET 2	E1
POWER TILT ASSY	E3
UPPER CASING	E6
OIL PAN	E7
LOWER CASING. DRIVE 1	F1
LOWER CASING. DRIVE 2	F4
FUEL TANK	F5
STEERING GUIDE	F6
REMOTE CONTROL BOX	F7

INDEX

NUMERICAL INDEX	G1
-----------------------	----

SHEET 2/2

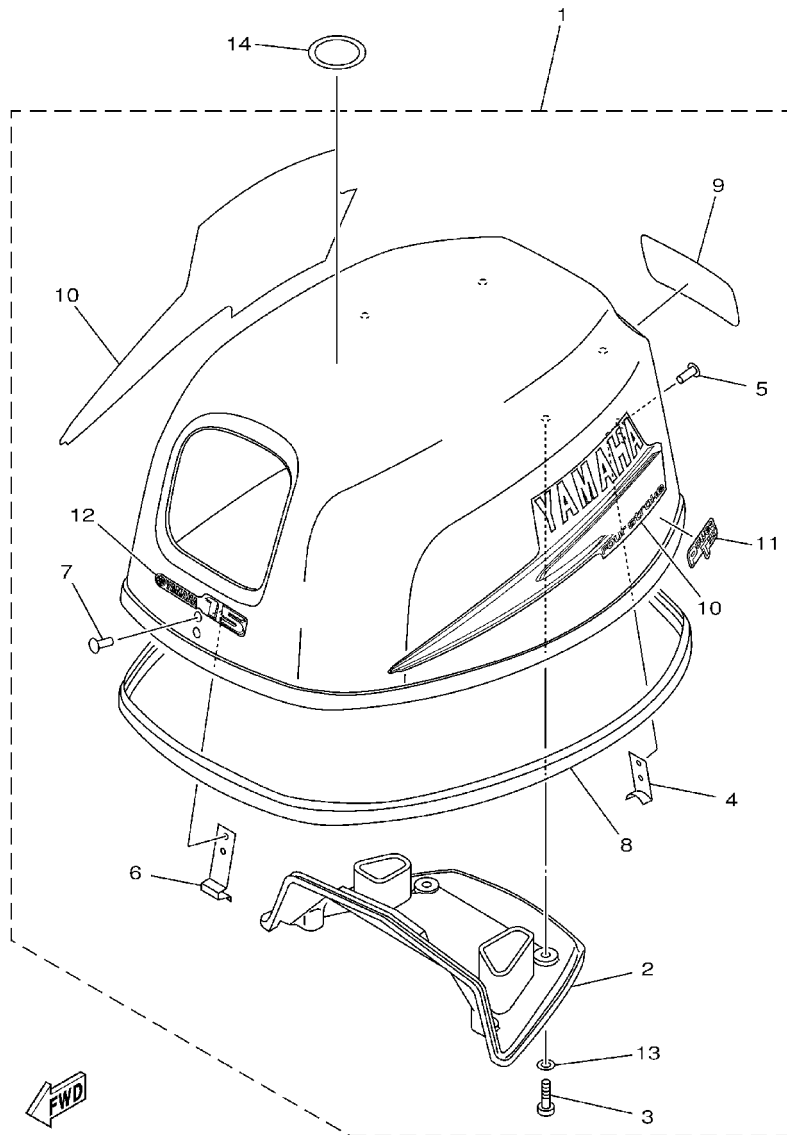
REMOTE CONTROL ASSY	A4*
REPAIR KIT 1	A7*
REPAIR KIT 2	B1*
REPAIR KIT 3	B2*

INDEX

NUMERICAL INDEX	G1*
-----------------------	-----

FIG. 1 TOP COWLING

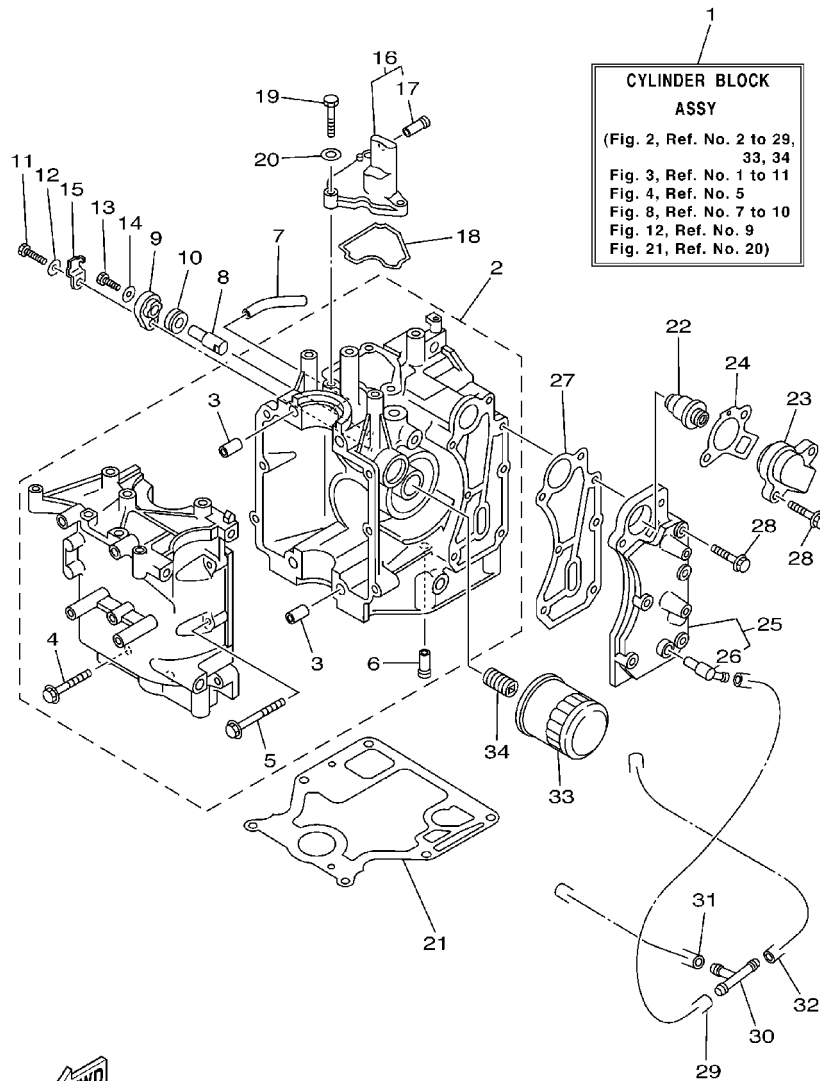
CAPOT SUPERIEUR



69B1010-2010

REF. NO.	PART NO. NO. PIECES	DESCRIPTION DESCRIPTION	69A1	REMARKS REMARQUES
1	69A-42610-10-4D	TOP COWLING ASSY CAPOT (ENS.)	1	
2	66M-42613-00	.MOLDING, AIR DUCT .MANCHON A AIR	1	
3	97780-60520	.SCREW, TAPPING .VIS, TETE FRAISEE	4	
4	6E0-42651-02	.HOOK .CROCHET	1	
5	90266-04M04	.RIVET .RIVET	2	
6	6E7-42652-00	.HOOK .CROCHET	1	
7	90266-04M04	.RIVET .RIVET	2	
8	66M-42615-00	.SEAL .JOINT	1	
9	66M-42678-20	.GRAPHIC, REAR .ADHESIF, ARRIERE	1	
10	66M-W0070-20	.GRAPHIC SET .JEU, DIEMBLEMES	1	
11	69A-42675-00	.GRAPHIC, SIDE 1 .EMBLEME	1	
12	66M-42677-00	.GRAPHIC, FRONT .ADHESIF, AVANT	1	
13	90202-05M38	.WASHER, PLATE .RONDELLE, PLATE	4	
14	67F-13434-02	.LABEL, CAUTION .ETIQUETTE, ATTENTION	1	

FIG. 2 CYLINDER. CRANKCASE 1 CYLINDRE. CARTER 1

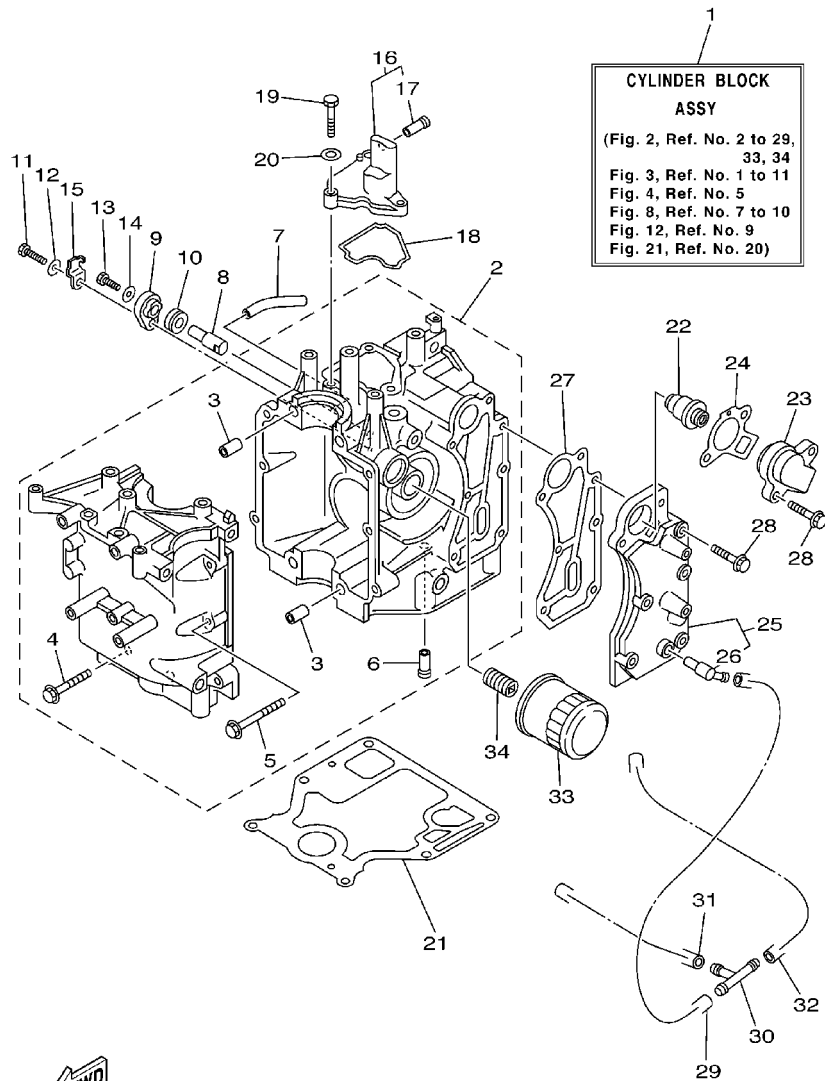


CYLINDER BLOCK ASSY
 (Fig. 2, Ref. No. 2 to 29, 33, 34
 Fig. 3, Ref. No. 1 to 11
 Fig. 4, Ref. No. 5
 Fig. 8, Ref. No. 7 to 10
 Fig. 12, Ref. No. 9
 Fig. 21, Ref. No. 20)

REF. NO.	PART NO. NO. PIECES	DESCRIPTION DESCRIPTION	69A1	REMARKS REMARQUES
1	66M-W009B-02-1S	CYLINDER BLOCK ASSY CYLINDRE GROUPE (ENS.)	1	
2	66M-15100-01-1S	CRANKCASE ASSY CARTER DE MOTEUR COMPLET	1	
3	99510-10114	.PIN, DOWEL .GOUJON, D'ASSEMBLAGE	2	
4	90119-08M66	.BOLT, WITH WASHER .BOULON, AVEC RONDELLE	4	
5	90119-06M14	.BOLT, WITH WASHER .BOULON, AVEC RONDELLE	6	
6	6E5-24377-00	.PIPE, JOINT 3 .DURITE RACCORDEMENT	1	
7	90445-10M46	HOSE (L65) DURITE (L65)	1	
8	66M-11325-00	ANODE ANODE	1	
9	66M-11327-00-94	COVER, ANODE COUVERCLE	1	
10	66M-11328-00	GROMMET, ANODE PASSE-FIL	1	
11	97095-06020	BOLT BOULON	1	
12	92995-06600	WASHER RONDELLE	1	
13	97095-05012	BOLT BOULON	1	
14	92995-05600	WASHER RONDELLE	1	
15	66M-12535-00	PLATE PLAQUE	1	
16	66M-11168-00-1S	COVER, BREATHER COUVERCLE, RENIFLARD	1	
17	6E5-24377-00	.PIPE, JOINT 3 .DURITE RACCORDEMENT	1	
18	66M-11357-00	SEAL, CYLINDER 3 JOINT, SPY CYLINDRE	1	
19	97095-06020	BOLT BOULON	3	
20	92995-06600	WASHER RONDELLE	3	
21	66M-11351-00	GASKET, CYLINDER JOINT, D'EMBASE	1	
22	66M-12411-00	THERMOSTAT THERMOSTAT	1	
23	6H3-12413-00-1S	COVER, THERMOSTAT COUVERCLE, THERMOSTAT	1	
24	62Y-12414-00	GASKET, COVER JOINT, COUVERCLE	1	
25	66M-41113-02-1S	OUTER COVER, EXHAUST COUVERCLE, ECHAPPEMENT	1	
26	676-11372-00	.NIPPLE, HOSE .RACCORD, TUYAU	1	
27	66M-41114-00	GASKET, EXHAUST OUTER COVER JOINT, COUVERCLE D'ECHAPPEMENT	1	

69A1300-2020

FIG. 2 CYLINDER. CRANKCASE 1 CYLINDRE. CARTER 1



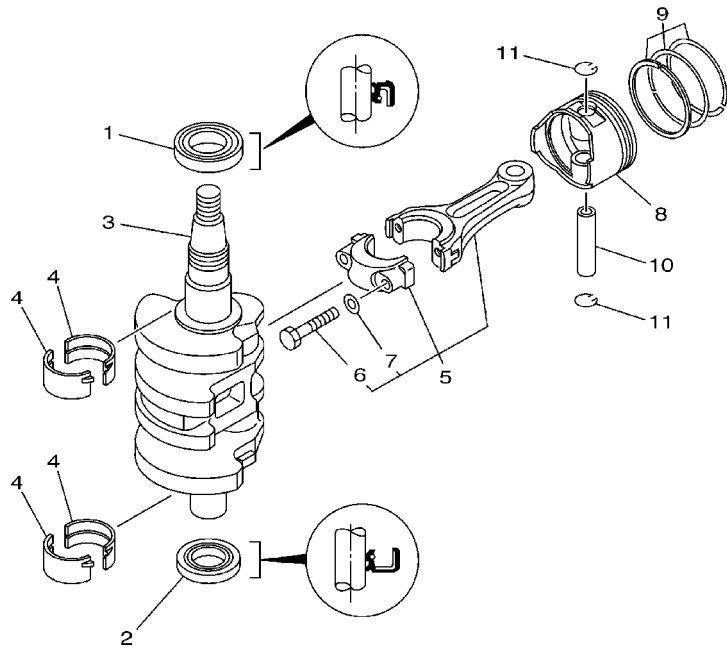
1
**CYLINDER BLOCK
 ASSY**
 (Fig. 2, Ref. No. 2 to 29,
 33, 34
 Fig. 3, Ref. No. 1 to 11
 Fig. 4, Ref. No. 5
 Fig. 8, Ref. No. 7 to 10
 Fig. 12, Ref. No. 9
 Fig. 21, Ref. No. 20)

REF. NO.	PART NO. NO. PIECES	DESCRIPTION DESCRIPTION	69A1				REMARKS REMARQUES
28	90119-06MA4	BOLT, WITH WASHER BOULON, AVEC RONDELLE	7				
29	90445-09061	HOSE (L65) DURITE (L65)	1				
30	688-24378-00	PIPE, JOINT 4 DURITE RACCORDEMENT 4	1				
31	90445-09086	HOSE (L170) DURITE (L170)	1				
32	90445-09105	HOSE (L300) DURITE (L300)	1				
33	5GH-13440-00	ELEMENT ASSY, OIL CLEANER ELEMENT, FILTRE A HUILE	1				
34	90401-20M00	BOLT, UNION BOULON, RACCORD	1				

FWD
 69A1300-2020

FIG. 3 CRANKSHAFT. PISTON

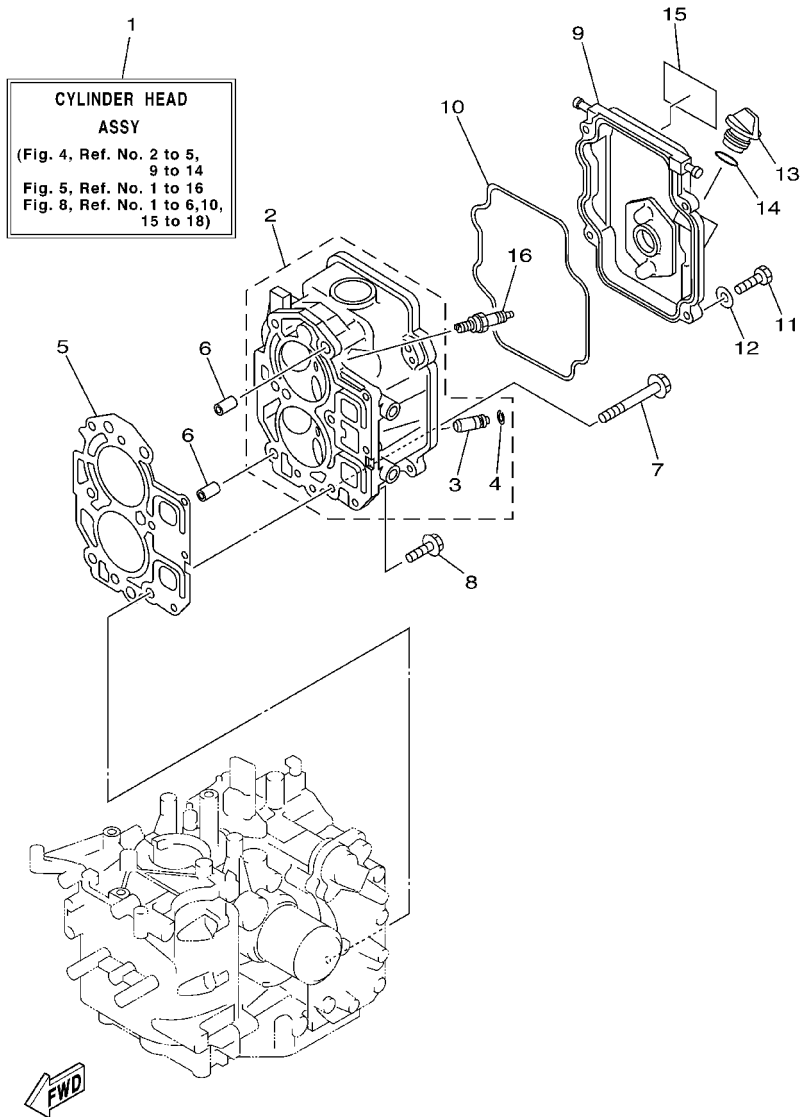
VILEBREQUIN. PISTON



REF. NO.	PART NO. NO. PIECES	DESCRIPTION DESCRIPTION	69A1				REMARKS REMARQUES
1	93102-35M51	OIL SEAL JOINT SPY	1				
2	93102-25M52	OIL SEAL JOINT SPY	1				
3	66M-11411-00	CRANKSHAFT VILEBREQUIN COMPLET	1				
4	66M-11416-00	PLANE BEARING, CRANKSHAFT 1 COUSSINET DE VILEBREQUIN	4				UR BROWN
	66M-11416-10	PLANE BEARING, CRANKSHAFT 1 COUSSINET DE VILEBREQUIN	4				UR BLACK
	66M-11416-20	PLANE BEARING, CRANKSHAFT 1 COUSSINET DE VILEBREQUIN	4				UR BLUE
5	66M-11650-00	CONNECTING ROD ASSY BIELLE COMPLETE	2				
6	66M-11654-00	.BOLT, CONNECTING ROD .BOULON, BIELLE	2				
7	90201-07M01	.WASHER, PLATE .RONDELLE, PLATE	2				
8	66M-11631-00-96	PISTON (STD) PISTON (STD)	2				
	66M-11635-00	PISTON (0.25MM O/S) PISTON (0.25MM O/S)	2				AP
	66M-11636-00	PISTON (0.50MM O/S) PISTON (0.50MM O/S)	2				AP
9	66M-11603-00	PISTON RING SET (STD) JUE DE SEGMENTS (STD)	2				
	66M-11604-00	PISTON RING SET (0.25MM O/S) JUE DE SEGMENTS (0.25MM O/S)	2				AP
	66M-11605-00	PISTON RING SET (0.50MM O/S) JUE DE SEGMENTS (0.50MM O/S)	2				AP
10	634-11633-00	PIN, PISTON AXE, PISTON	2				
11	93450-15023	CIRCLIP CIRCLIP, TYPE S	4				



66M0010-8031



69A1300-2040

FIG. 4 CYLINDER. CRANKCASE 2 CYLINDRE. CARTER 2

REF. NO.	PART NO. NO. PIECES	DESCRIPTION DESCRIPTION	69A1	REMARKS REMARQUES
1	66M-W009A-01-1S	CYLINDER HEAD ASSY CULASSE (ENS.)	1	
2	66M-11111-01-1S	HEAD, CYLINDER 1 CULASSE	1	
3	66M-11133-10	.GUIDE, INTAKE VALVE .GUIDE, SOUP D'ADM	4	
4	93450-09M01	.CIRCLIP .CIRCLIP, TYPE S	4	
5	66M-11181-00	GASKET, CYLINDER HEAD 1 JOINT, DE CULASSE 1	1	
6	99510-10114	PIN, DOWEL GOUJON, D'ASSEMBLAGE	2	
7	90105-08M78	BOLT, FLANGE BOULON	6	
8	90119-06MA3	BOLT, WITH WASHER BOULON, AVEC RONDELLE	3	
9	66M-11191-00-1S	COVER, CYLINDER HEAD 1 COUVERCLE, CULASSE 1	1	
10	66M-11356-00	SEAL, CYLINDER 2 JOINT, SPY CYLINDRE	1	
11	97095-06020	BOLT BOULON	4	
12	92995-06600	WASHER RONDELLE	4	
13	6G8-15363-00	PLUG, OIL PLOT, HUILE	1	
14	93210-24M79	O-RING JOINT TORIQUE	1	
15	66M-12138-60	MARK, CAUTION MAKER	1	
16	94701-00375	PLUG, SPARK (NGK DPR6EA-9) BOUGIE D'ALLUMAGE (NGK DPR6EA-9)	2	



66M0010-1051

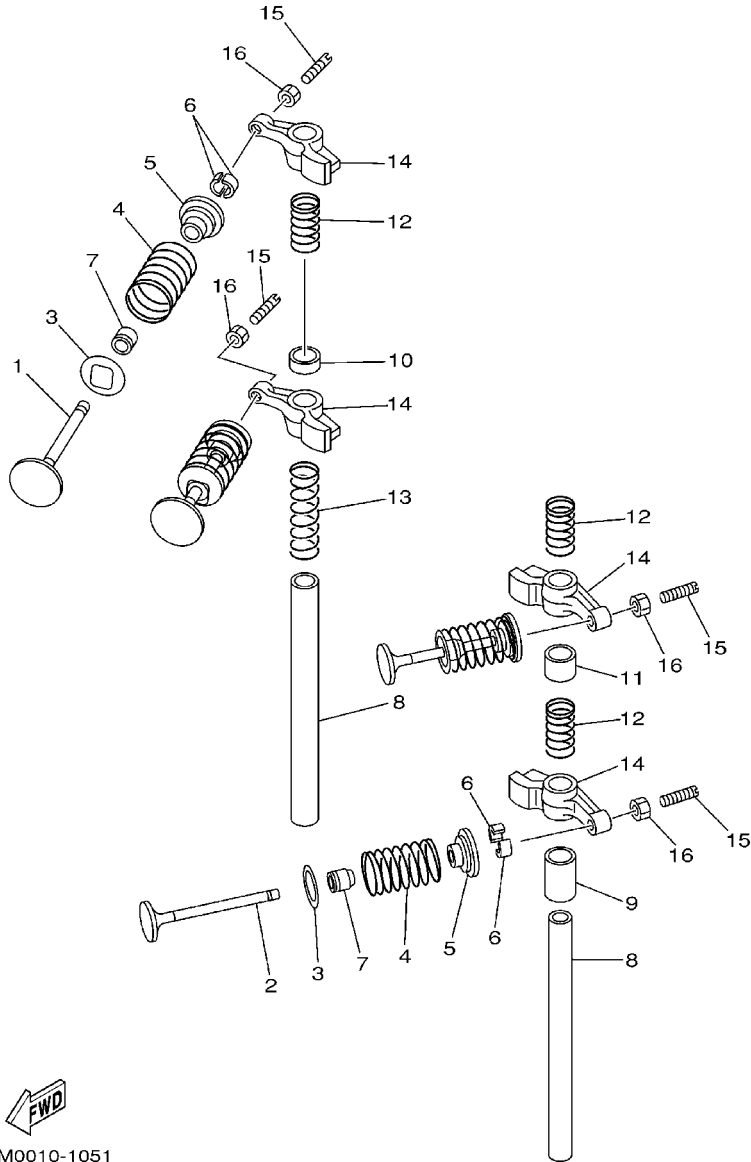
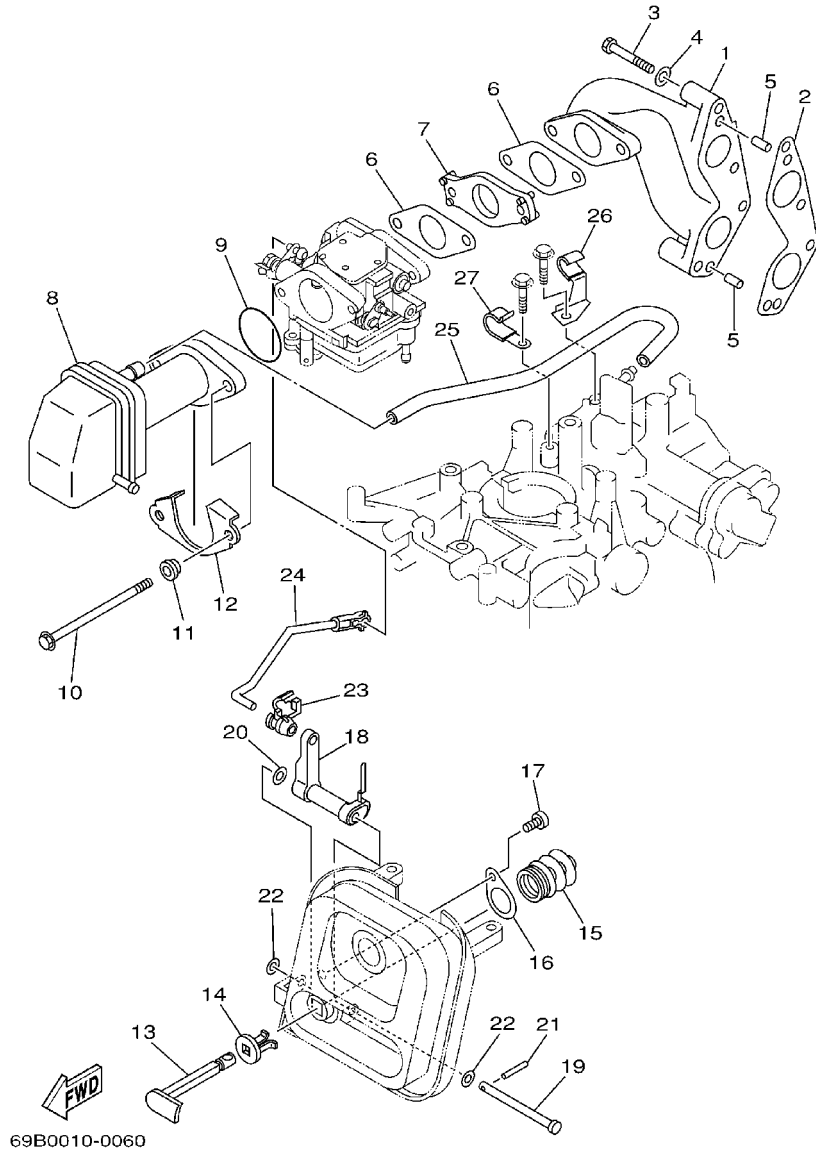


FIG. 5 VALVE

SOUPAPE

REF. NO.	PART NO. NO. PIECES	DESCRIPTION DESCRIPTION	69A1	REMARKS REMARQUES
1	66M-12111-00	VALVE, INTAKE SOUPAPE, ADMISSION	2	
2	66M-12121-00	VALVE, EXHAUST SOUPAPE, ECHAPPEMENT	2	
3	66M-12116-00	SEAT, VALVE SPRING SIEGE, RESSORT DE SOUPAPE	4	
4	66M-12113-00	SPRING, VALVE INNER RESSORT DE SOUPAPE, INTERNE	4	
5	30X-12117-00	RETAINER, VALVE SPRING BUTEE DE RESSORT DE SOUPAPE	4	
6	30X-12118-00	COTTER, VALVE FRAISE, SOUPAPE	8	
7	51Y-12119-00	SEAL, VALVE STEM JOINT, QUEUE DE SOUPAPE	4	
8	66M-12146-00	SHAFT, ROCKER AXE, CULBUTEUR	2	
9	90387-13M56	COLLAR COLLERETTE	1	
10	90387-13001	COLLAR COLLERETTE	1	
11	90387-13002	COLLAR COLLERETTE	1	
12	90501-12M40	SPRING, COMPRESSION RESSORT, COMPRESSION	3	
13	90501-12M41	SPRING, COMPRESSION RESSORT, COMPRESSION	1	
14	66M-12151-10	ARM, VALVE ROCKER CULBUTEUR	4	
15	62Y-12159-00	SCREW, VALVE ADJUSTING VIS, REGLAGE DE SOUPAPE	4	
16	62Y-12158-00	NUT, LOCK CONTRE-ECROU	4	



69B0010-0060

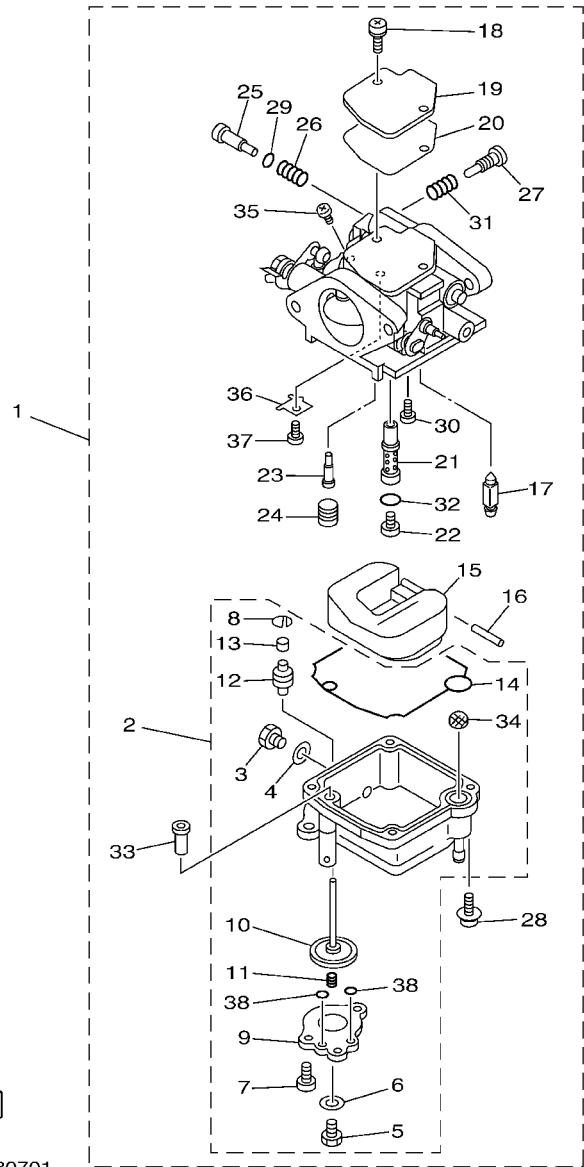
FIG. 6 INTAKE

ADMISSION

REF. NO.	PART NO. NO. PIECES	DESCRIPTION DESCRIPTION	69A1	REMARKS REMARQUES
1	66M-13641-00-94	MANIFOLD 1 TUBULURE 1	1	
2	66M-13645-00	GASKET, MANIFOLD 1 JOINT, TUBULURE 1	1	
3	97095-06040	BOLT BOULON	4	
4	92995-06600	WASHER RONDELLE	4	
5	93606-12019	PIN, DOWEL GOUJON	2	
6	66M-13646-00	GASKET, MANIFOLD 2 JOINT, TUBULURE 2	2	
7	66M-14271-00	INSULATOR ISOLATEUR	1	
8	66M-14440-00	SILENCER ASSY, INTAKE SIENCIEUX D'ADMISSION	1	
9	93210-35M86	O-RING JOINT TORIQUE	1	
10	90119-06M76	BOLT, WITH WASHER BOULON, AVEC RONDELLE	2	
11	90387-06M79	COLLAR COLLERETTE	2	
12	66M-14477-00	PLATE PLAQUE	1	
13	66M-41271-00	KNOB, CHOKE BOUTON DE STARTER	1	
14	689-41273-00	GROMMET PASSE-FIL	1	
15	66M-41292-00	BUSH 2 BAGUE 2	1	
16	66M-41298-00	WASHER 2 RONDELLE 2	1	
17	97780-50510	SCREW, TAPPING VIS, TETE FRAISEE	1	
18	66M-41252-00	LEVER, CHOKE 1 LEVIER 1	1	
19	90240-05M20	PIN, CLEVIS BOULON, A GOUPILLE	1	
20	90206-05005	WASHER, WAVE RONDELLE, ONDULEE	1	
21	91690-20016	PIN, SPRING GOUPILLE, ELASTIQUE	1	
22	90202-05088	WASHER, PLATE RONDELLE, PLATE	2	
23	6R5-41237-00	JOINT, LINK RACCORD	1	
24	66M-41256-00	ROD, CHOKE 1 TRINGLE 1, STARTER	1	
25	66M-15373-00	PIPE, BREATHER DURITE DE RENIFLARD	1	
26	90465-08M82	CLAMP BRIDE	1	
27	90465-08M83	CLAMP BRIDE	1	

FIG. 7 CARBURETOR

CARBURETEUR

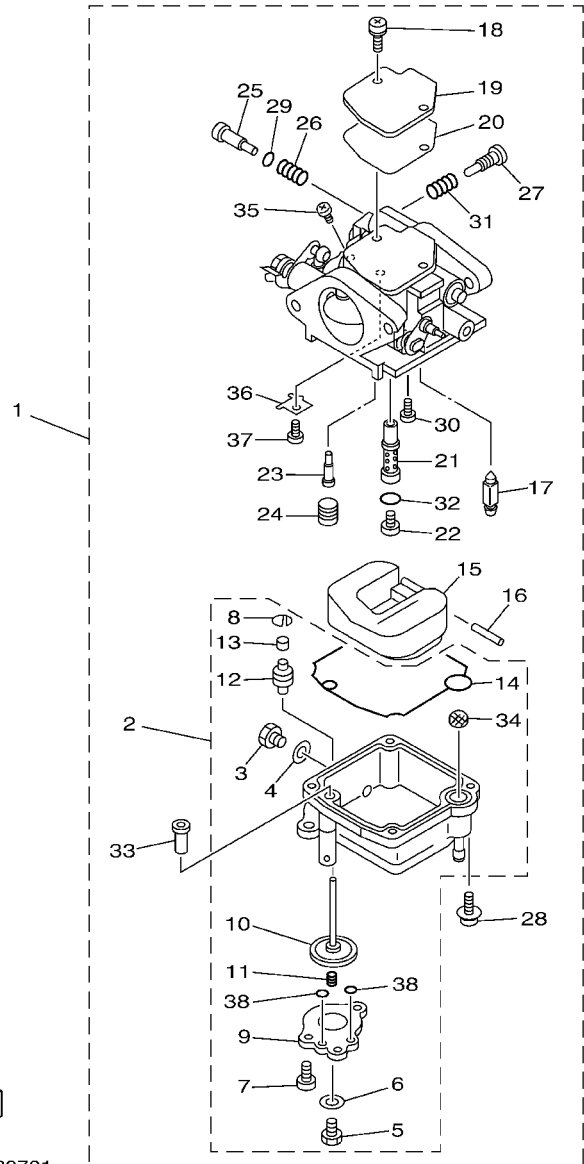


66M001080701

REF. NO.	PART NO. NO. PIECES	DESCRIPTION DESCRIPTION	69A1			REMARKS REMARQUES
1	66M-14301-00	CARBURETOR ASSY 1 CARBURATEUR COMPLET 1	1			
2	66M-14381-02	.BODY, FLOAT CHAMBER .CORPS, CUVE DE FLOTTEUR	1			
3	62Y-14383-00	..SCREW, DRAIN ..BOUCHON, PURGE	1			
4	66M-14398-00	..GASKET ..JOINT	1			
5	677-14383-01	..SCREW, DRAIN ..BOUCHON, PURGE	1			
6	6L2-14398-00	..GASKET ..JOINT	1			
7	66M-14325-00	..SCREW, PAN HEAD ..VIS TETE CONIQUE	3			
8	66M-14377-00	..STOPPER ..BUTEE	1			
9	66M-14958-00	..COVER, DIAPHRAGM ..COUVERCLE, DIAPHRAGME	1			
10	66M-14368-01	..DIAPHRAGM ASSY 1 ..DIAPHRAGME 1	1			
11	6G8-14275-02	..SPRING ..RESSORT	1			
12	66M-14239-00	..SEAL ..JOINT	1			
13	66M-14225-00	..CAP ..COUVERCLE	1			
14	66M-14384-00	..GASKET, FLOAT CHAMBER ..JOINT, CUVE DE FLOTTEUR	1			
15	6L2-14385-00	FLOAT FLOTTEUR	1			
16	6E5-14386-01	PIN, FLOAT AXE, FLOTTEUR	1			
17	6L2-14392-00	.VALVE, NEEDLE .POINTEAU	1			
18	97980-04110	.SCREW, WITH WASHER .VIS, AVEC RONDELLE	2			
19	6L2-14157-00	.COVER, MIXING COUVERCLE DE CHAMBRE	1			
20	62Y-14399-00	.GASKET JOINT	1			
21	66M-14341-00	.NOZZLE, MAIN PUITS D'AIGUILLE	1			
22	66M-14343-52	.JET, MAIN (#104) .GICLEUR, PRINCIPAL (#104)	1			
23	66M-14342-23	.JET, PILOT (#45) .GICLEUR, RALENTI (#45)	1			
24	66M-14355-00	.PLUG .PLOT	1			
25	5H0-14323-00	.SCREW, AIR ADJUSTING .VIS DE DOSEUR D'AIR	1			
26	30X-14334-00	.SPRING, AIR ADJUSTING .RESSORT, VIS DE DOSEUR D'AIR	1			
27	62Y-14521-00	.SCREW, THROTTLE .VIS, ACCELERATEUR	1			

FIG. 7 CARBURETOR

CARBURETEUR

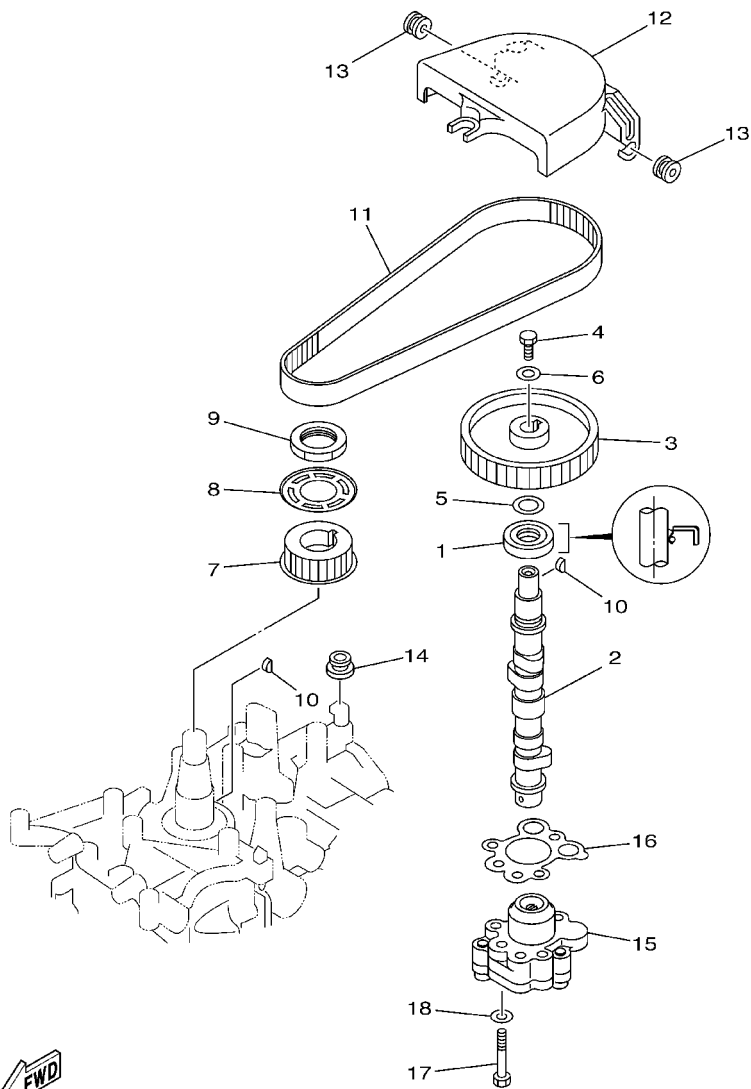


66M001080701

REF. NO.	PART NO. NO. PIECES	DESCRIPTION DESCRIPTION	69A1				REMARKS REMARQUES
28	97980-04112	.SCREW, WITH WASHER .VIS, AVEC RONDELLE	4				
29	62Y-14397-00	.O-RING .JOINT TORIQUE	1				
30	98980-04006	.SCREW, BIND .VIS, DE PRESSION	1				
31	646-14212-01	.SPRING, PILOT ADJUSTING .RESSORT, VIS DE RALENTI	1				
32	6F5-14397-00	.O-RING .JOINT TORIQUE	1				
33	66M-14272-00	.CHECK VALVE ASSY .CLAPET (ENS.)	1				
34	66M-14827-00	.FILTER .FILTRE	1				
35	97890-04005	.SCREW, PAN HEAD .VIS, TETE TRONCONIQUE	1				
36	66M-14157-00	.PLATE .PLAQUE	1				
37	98580-03005	.SCREW, PAN HEAD .VIS, TETE TRONCONIQUE	1				
38	69M-24533-00	.O-RING .JOINT TORIQUE	2				

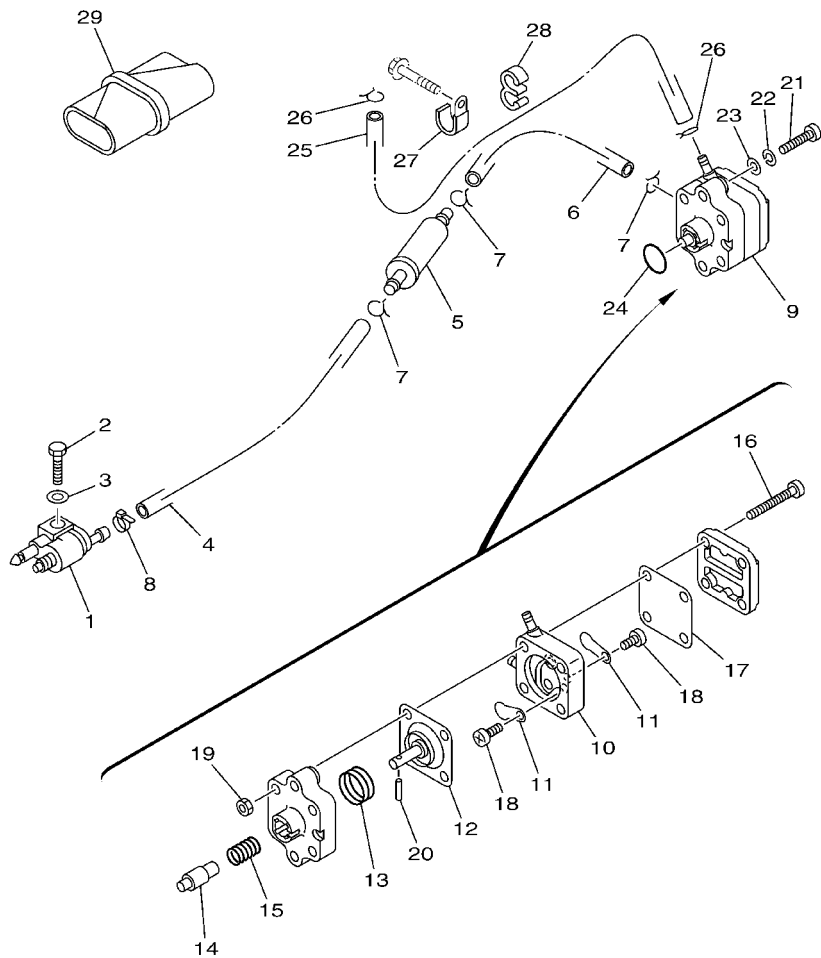
FIG. 8 OIL PUMP

POMPE A HUILE



REF. NO.	PART NO. NO. PIECES	DESCRIPTION DESCRIPTION	69A1	REMARKS REMARQUES
1	93102-18M21	OIL SEAL JOINT SPY	1	
2	66M-12171-10	CAMSHAFT 1 ARBRE A CAMES 1	1	
3	66M-11537-00-94	GEAR, DRIVEN PIGNON SECONDAIRE	1	
4	97013-06016	BOLT BOULON	1	
5	90201-13201	WASHER, PLATE RONDELLE, PLATE	1	
6	90201-06M94	WASHER, PLATE RONDELLE, PLATE	1	
7	66M-11536-10	GEAR, DRIVE ENGRENAGE, MENANT	1	
8	66M-11557-00	WASHER 1 RONDELLE 1	1	
9	90170-28M37	NUT ECROU	1	
10	90280-03M01	KEY, WOODRUFF CLAVETTE, DEMI-LUNE	2	
11	66M-46241-00	V-BELT COURROIE TRAPEZOIDALE	1	
12	66M-46297-00	COVER, DUST COUVERCLE, POUSSIERE	1	
13	90480-10M16	GROMMET PASSE-FIL	2	
14	90480-12072	GROMMET PASSE-FIL	1	
15	66M-13300-10	OIL PUMP ASSY POMPE A HUILE COMPLET	1	
16	66M-13329-10	GASKET, PUMP COVER JOINT, COUVERCLE DE POMPE	1	
17	97095-06035	BOLT BOULON	3	
18	92995-06600	WASHER RONDELLE	3	

FWD
69A1300-2080

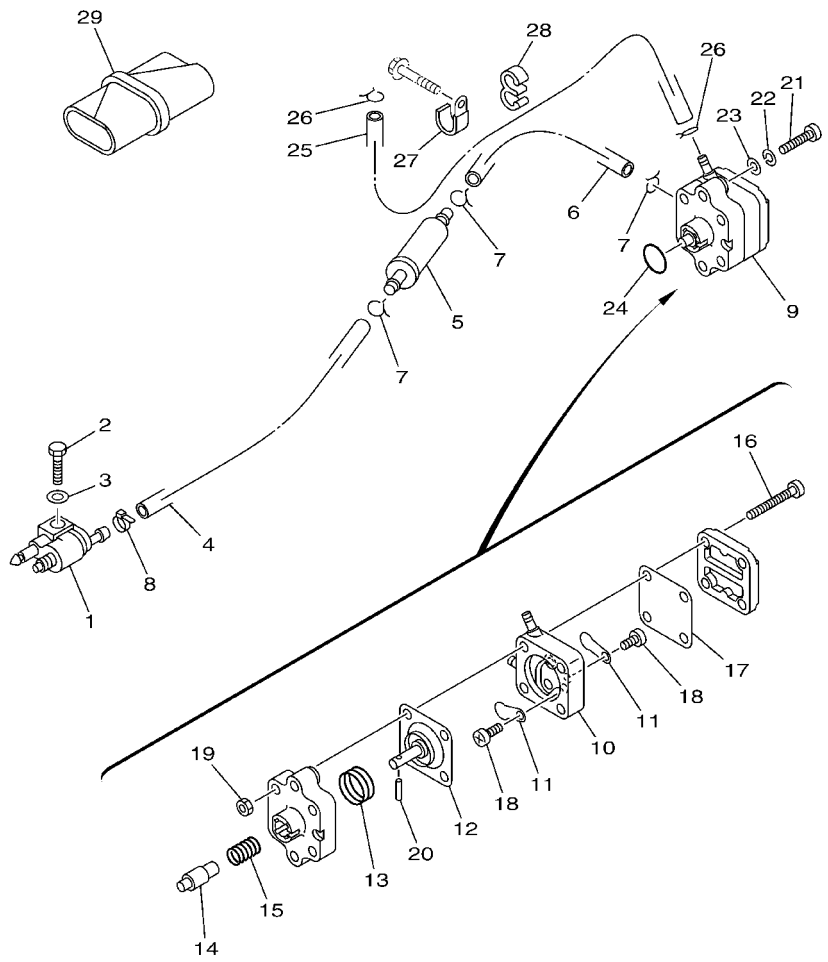


66M0010-9090

FIG. 9 FUEL

CARBURANT

REF. NO.	PART NO. NO. PIECES	DESCRIPTION DESCRIPTION	69A1				REMARKS REMARQUES
1	6G1-24304-02	FUEL PIPE JOINT COMP. 1 DURITE RACCORDEMT. A ESSENCE	1				
2	97095-06020	BOLT BOULON	1				
3	92995-06600	WASHER RONDELLE	1				
4	90445-10M40	HOSE (L330) DURITE (L330)	1				
5	65W-24251-00	STRAINER 1 FILTRE 1	1				
6	90445-10M20	HOSE (L150) DURITE (L150)	1				
7	90467-09M03	CLIP JONC	3				
8	90465-11M10	CLAMP BRIDE	1				
9	66M-24410-10	FUEL PUMP ASSY POMPE A ESSENCE	1				
10	66M-24413-01	.BODY 2 .CORPS 2	1				
11	6A0-24421-01	.VALVE, CHECK .SOUPAPE, RETENUE	2				
12	66M-24411-10	.DIAPHRAGM .DIAPHRAGME	1				
13	66M-24423-00	.SPRING, DIAPHRAGM .RESSORT, DIAPHRAGME	1				
14	66M-13131-10	.PLUNGER .PLONGEUR	1				
15	66M-24454-00	.SPRING .RESSORT	1				
16	66M-24444-00	.SCREW .VIS	4				
17	66M-24471-00	.DIAPHRAGM .DIAPHRAGME	1				
18	6E7-14325-00	.SCREW, PAN HEAD .VIS TETE CONIQUE	2				
19	95380-05600	.NUT .ECROU	4				
20	66M-24374-00	.PIN .GOUPILE	1				
21	97880-06030	SCREW, PAN HEAD VIS, TETE TRONCONIQUE	2				
22	92990-06100	WASHER, SPRING RONDELLE, GROWER	2				
23	92990-06600	WASHER, PLATE RONDELLE, PLATE	2				
24	93210-20M65	O-RING JOINT TORIQUE	1				
25	90445-10M93	HOSE (L370) DURITE (L370)	1				
26	90467-09M03	CLIP JONC	2				
27	90465-06M86	CLAMP BRIDE	1				



66M0010-9090

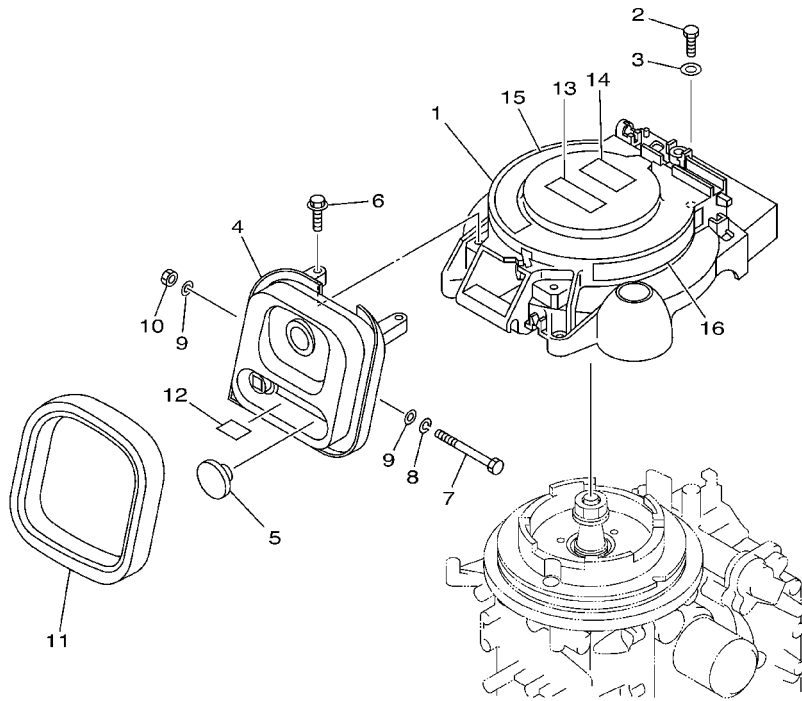
FIG. 9 FUEL

CARBURANT

REF. NO.	PART NO. NO. PIECES	DESCRIPTION DESCRIPTION	69A1				REMARKS REMARQUES
28	90464-09M31	CLAMP BRIDE	1				
29	62Y-28100-00	TOOL KIT TROUSSE A OUTILS	1				

FIG. 10 STARTER

DEMARREUR



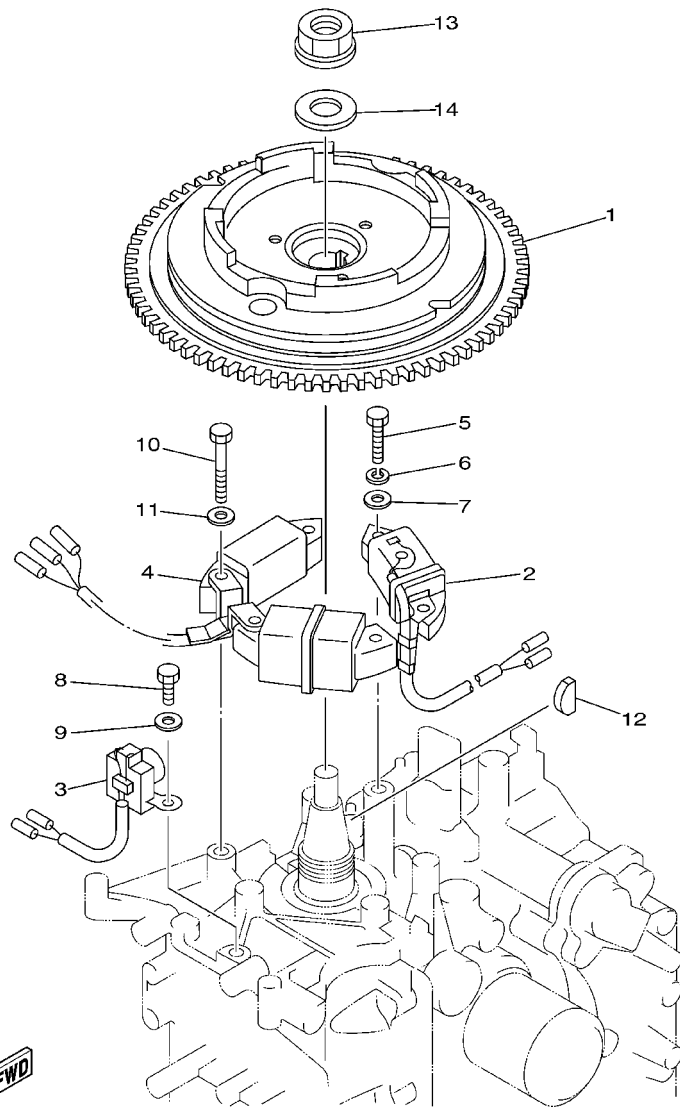
REF. NO.	PART NO. NO. PIECES	DESCRIPTION DESCRIPTION	69A1				REMARKS REMARQUES
1	66M-15711-10	CASE, STARTER CARTER DE DEMARREUR	1				
2	97095-06020	BOLT BOULON	3				
3	92995-06600	WASHER RONDELLE	3				
4	66M-15758-10	GUIDE, ROPE GUIDE DE CABLE	1				
5	6G1-42725-00	GROMMET PASSE-FIL	1				
6	90119-06M59	BOLT, WITH WASHER BOULON, AVEC RONDELLE	2				
7	97095-06090	BOLT BOULON	1				
8	92995-06100	WASHER, SPRING RONDELLE, GROWER	1				
9	90201-06M05	WASHER, PLATE RONDELLE, PLATE	2				
10	95380-06700	NUT ECROU	1				
11	66M-15762-00	SEAL, RUBBER 2 JOINT CAOUTCHOUC 2	1				
12	66M-84342-00	SEAT, EMBLEM SIEGE, EMBLEME	1				
13	6A1-83625-41	MARK 5 ETIQUETTE 5	1				
14	6A1-83625-51	MARK 5 ETIQUETTE 5	1				
15	66M-14427-60	LABEL, INSTRUCTION ETIQUETTE, INSTRUCTION	1				
16	6G8-13437-63	MARK, CAUTION MARKER	1				



69A1300-2100

FIG. 11 GENERATOR

GENERATRICE

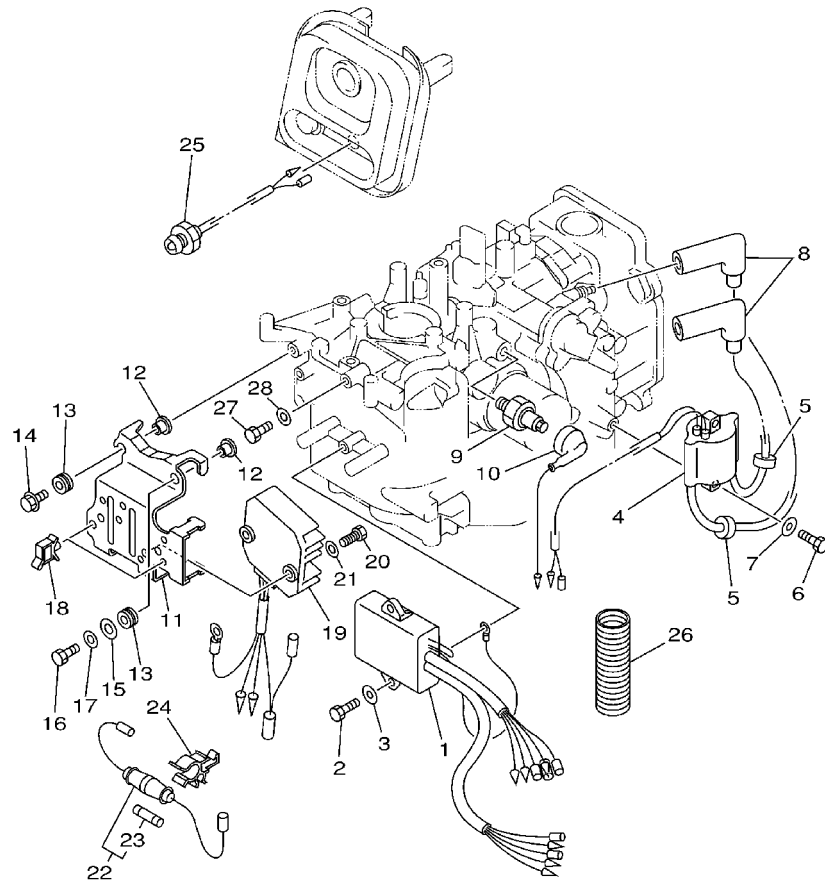


69B0010-0110

REF. NO.	PART NO. NO. PIECES	DESCRIPTION DESCRIPTION	69A1	REMARKS REMARQUES
1	66M-85550-10	ROTOR ASSY ROTOR CPLT	1	WITH RING GEAR
2	66M-85520-00	COIL, CHARGE BOBINE, CHARGE	1	
3	66M-85580-00	COIL, PULSER BOBINE, PULSEUR	1	
4	66M-85533-10	COIL, LIGHTING BOBINE, ECLAIRAGE	1	10A
5	97095-06025	BOLT BOULON	2	
6	92995-06100	WASHER, SPRING RONDELLE, GROWER	2	
7	92995-06600	WASHER RONDELLE	2	
8	97095-06016	BOLT BOULON	2	
9	92995-06600	WASHER RONDELLE	2	
10	97095-06040	BOLT BOULON	4	
11	92995-06600	WASHER RONDELLE	4	
12	90280-05013	KEY, WOODRUFF CLAVETTE, DEMI-LUNE	1	
13	90179-16M05	NUT ECROU	1	
14	90201-16M44	WASHER, PLATE RONDELLE, PLATE	1	

FIG. 12 ELECTRICAL 1

PARTIE ELECTRIQUE 1



REF. NO.	PART NO. NO. PIECES	DESCRIPTION DESCRIPTION	69A1				REMARKS REMARQUES
1	66M-85540-10	C.D.I. UNIT ASSY BLOC C.D.I.	1				
2	97095-06020	BOLT BOULON	2				
3	92995-06600	WASHER RONDELLE	2				
4	66M-85570-00	IGNITION COIL ASSY BOBINE D'ALLUMAGE (ENS.)	1				
5	90480-25161	GROMMET PASSE-FIL	2				
6	97095-06020	BOLT BOULON	2				
7	92995-06600	WASHER RONDELLE	2				
8	6G8-82370-30	PLUG CAP ASSY ANTIPARASITE	2				
9	62Y-82504-10	OIL PRESSURE SWITCH ASSY CONTACTEUR DE PRESSION D'HUILE	1				
10	66M-82127-10	WIRE, LEAD 2 FIL 2	1				
11	69A-85542-10	BRACKET SUPPORT	1				
12	90387-06M05	COLLAR COLLERETTE	4				
13	90480-13M24	GROMMET PASSE-FIL	4				
14	95895-06020	BOLT, FLANGE BOULON, A COLLERETTE	3				
15	90201-06M05	WASHER, PLATE RONDELLE, PLATE	1				
16	97095-06025	BOLT BOULON	1				
17	92995-06600	WASHER RONDELLE	1				
18	90464-09M13	CLAMP BRIDE	2				
19	6G8-81960-A1	RECTIFIER & REGULATOR ASSY REDRESSEUR REGULATEUR CPLT	1				
20	97095-06016	BOLT BOULON	2				
21	92995-06600	WASHER RONDELLE	2				
22	6G8-82150-00	FUSE HOLDER ASSY SUPPORT DE FUSIBLE	1				
23	663-82151-00	.FUSE (12V-20A) .FUSIBLE (12V-20A)	1				
24	6G5-82152-00	HOLDER, FUSE SUPPORT, FUSIBLE	1				
25	65W-85410-01	EMERGENCY SIGNAL LIGHT ASSY FEU DE DETRESSE	1				
26	6H1-83557-00	TUBE TUBE	1				
27	97095-06016	BOLT BOULON	1				

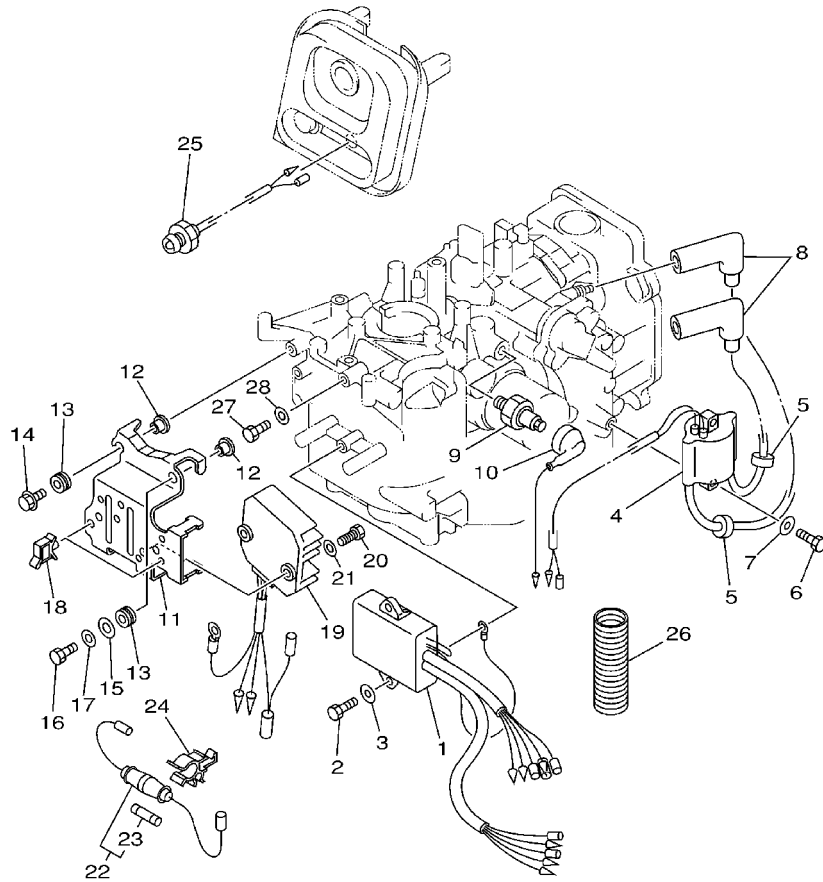
69B0010-1120

FIG. 12 ELECTRICAL 1

PARTIE ELECTRIQUE 1

REF. NO.	PART NO. NO. PIECES	DESCRIPTION DESCRIPTION	69A1	REMARKS REMARQUES
----------	---------------------	-------------------------	------	-------------------

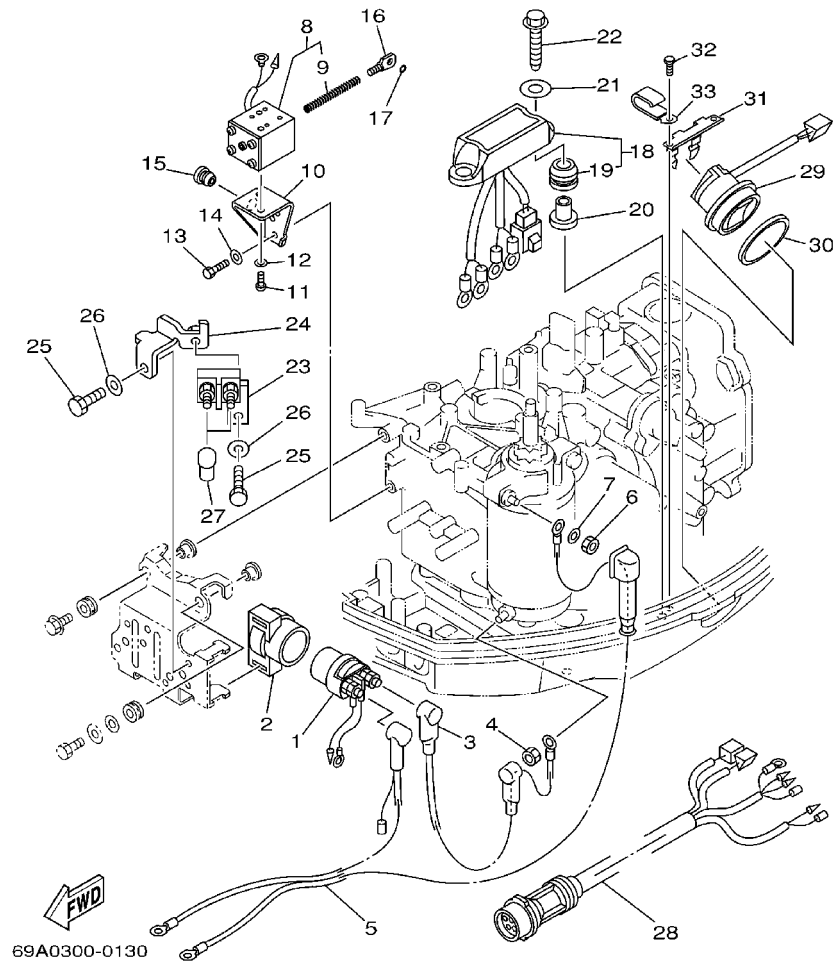
28	92995-06600	WASHER RONDELLE	1	
----	-------------	--------------------	---	--



69B0010-1120

FIG. 13 ELECTRICAL 2

PARTIE ELECTRIQUE 2



REF. NO.	PART NO. NO. PIECES	DESCRIPTION DESCRIPTION	69A1				REMARKS REMARQUES
1	6G1-81941-10	STARTER RELAY ASSY LANCEUR RELAIS (ENS.)	1				
2	6G1-81952-00	HOLDER, RELAY SUPPORT, RELAIS	1				
3	66M-82117-00	WIRE, LEAD FIL	1				
4	65W-8182B-00	NUT, SPECIAL ECROU, SPECIAL	1				
5	66M-82105-00	WIRE HARNESS FAISCEAU DE FILS	1				
6	95380-08700	NUT ECROU	1				
7	92990-08600	WASHER, PLATE RONDELLE, PLATE	1				
8	66M-86111-00	COIL, SOLENOID BOBINE	1				
9	66M-86116-00	.WIRE, PULL .CABLE, TENSION	1				
10	66M-86112-00	STAY, SOLENOID SUPPORT, SOLENOIDE	1				
11	97880-05008	SCREW, PAN HEAD VIS, TETE TRONCONIQUE	2				
12	92990-05600	WASHER, PLATE RONDELLE, PLATE	2				
13	97095-06016	BOLT BOULON	2				
14	92995-06600	WASHER RONDELLE	2				
15	90480-10M13	GROMMET PASSE-FIL	1				
16	66M-86117-00	HOOK, WIRE PULL CROCHET, TENSION DE CABLE	1				
17	93210-03261	O-RING JOINT TORIQUE	1				
18	69A-81950-00	RELAY ASSY RELAIS COMPLET	1				
19	90480-09M12	.GROMMET .PASSE-FIL	2				
20	90387-06M03	COLLAR COLLERETTE	2				
21	90201-06416	WASHER, PLATE RONDELLE, PLATE	2				
22	90109-06MA2	BOLT BOULON	2				
23	6H5-81920-00	TERMINAL ASSY BORNE	1				
24	69A-81929-00	BRACKET, TERMINAL SUPPORT	1				
25	97095-06012	BOLT BOULON	2				
26	92995-06600	WASHER RONDELLE	2				
27	6G5-82119-00	COVER, LEAD WIRE GARNITURE, FIL	2				

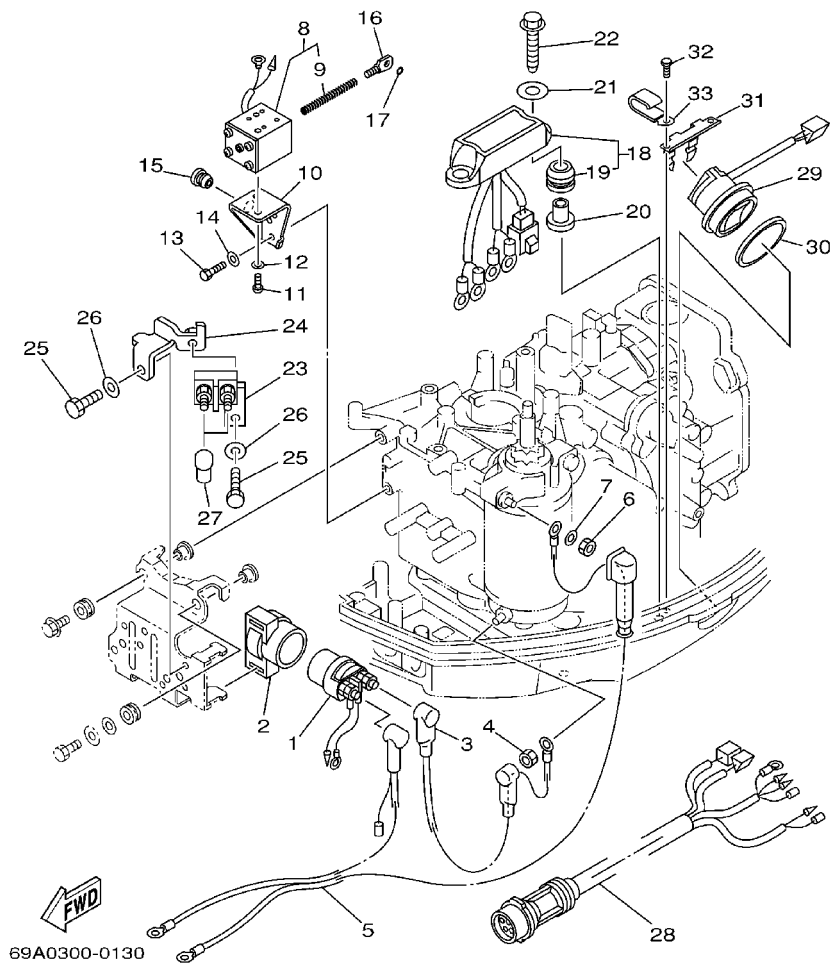


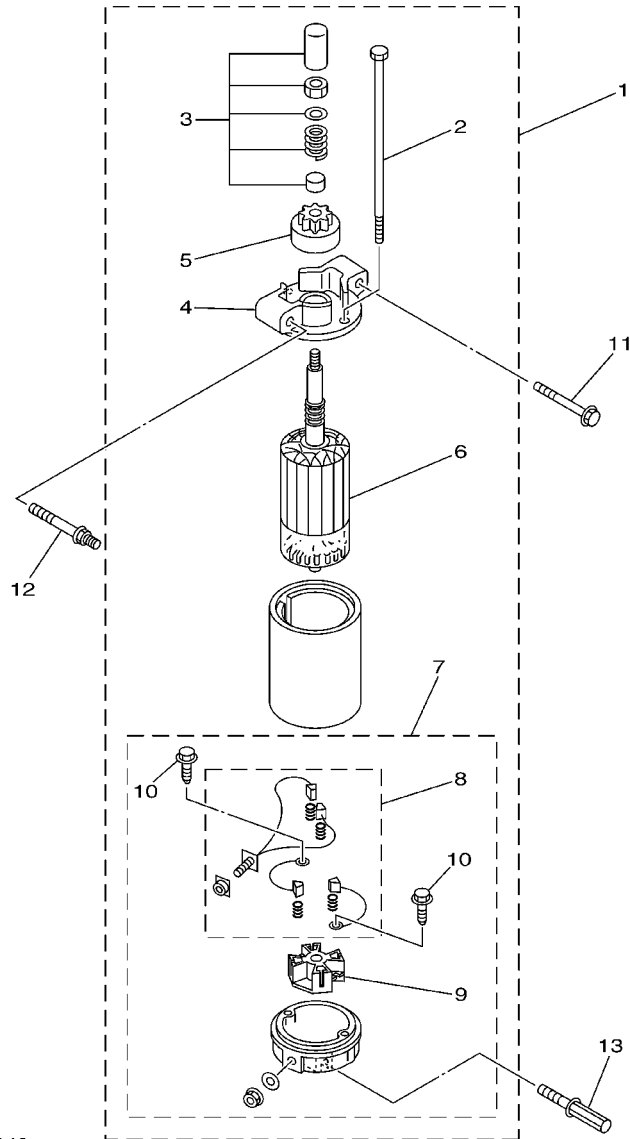
FIG. 13 ELECTRICAL 2

PARTIE ELECTRIQUE 2

REF. NO.	PART NO. NO. PIECES	DESCRIPTION DESCRIPTION	69A1	REMARKS REMARQUES
28	69A-82590-00	WIRE HARNESS ASSY FAISCEAU DE FILS COMPLET	1	
29	63D-82563-10	TRIM & TILT SWITCH ASSY INCLINER ET PARER COMMUTATEUR	1	
30	6E5-82587-00	GASKET JOINT	1	
31	69A-83614-00	BRACKET SUPPORT	1	
32	90109-06M86	BOLT BOULON	2	
33	90465-06M88	CLAMP BRIDE	1	

FIG. 14 STARTING MOTOR

DEMARREUR ELECTRIQUE

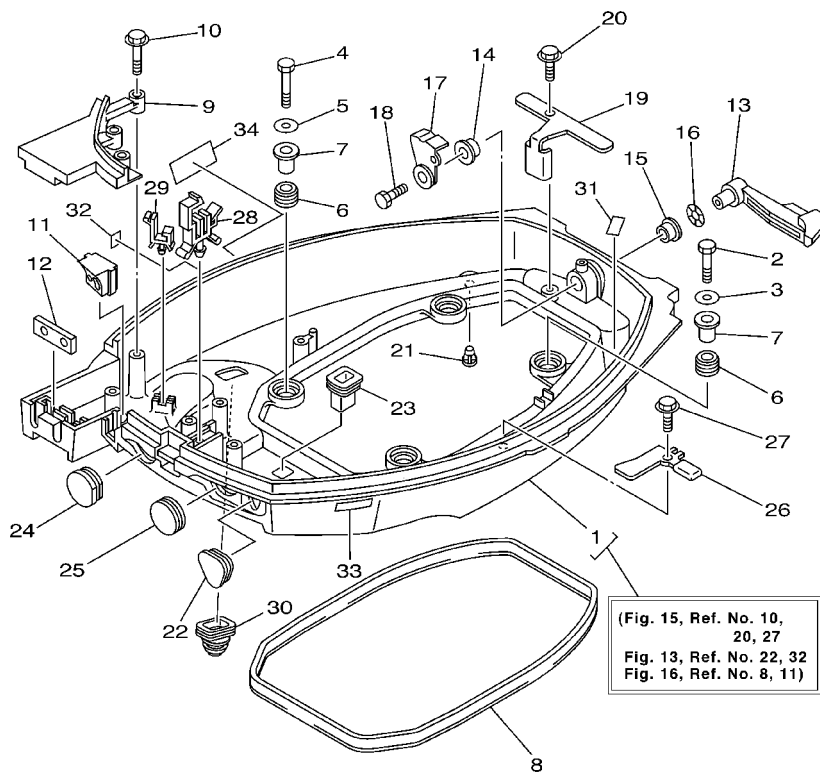


66M0010-0140

REF. NO.	PART NO. NO. PIECES	DESCRIPTION DESCRIPTION	69A1				REMARKS REMARQUES
1	66M-81800-01	STARTING MOTOR ASSY DEMARREUR ELECTRIQUE COMPLET	1				
2	65W-81826-00	.BOLT .BOULON	2				
3	65W-81857-01	.RETAINER .ARRETOIR	1				
4	66M-81830-00	.FRONT BRACKET ASSY .SUPPORT AVANT	1				
5	65W-81807-00	.GEAR ASSY, STARTING MOTOR .PIGNON, DEMARREUR ELECTRIQUE	1				
6	65W-81850-01	.ARMATURE ASSY .INDUIT	1				
7	66M-81820-00	.REAR BRACKET ASSY .SUPPORT ARRIERE COMPLET	1				
8	65W-81801-00	..BRUSH SET ..CHARBON	1				
9	65W-81840-00	..BRUSH HOLDER ASSY ..SUPPORT DE CHARBON	1				
10	65W-8182S-00	..SCREW ..VIS	2				
11	90119-08M39	BOLT, WITH WASHER BOULON, AVEC RONDELLE	1				
12	90109-08M78	BOLT BOULON	1				
13	90109-08M85	BOLT BOULON	1				

FIG. 15 BOTTOM COWLING

CAPOT INFERIEUR



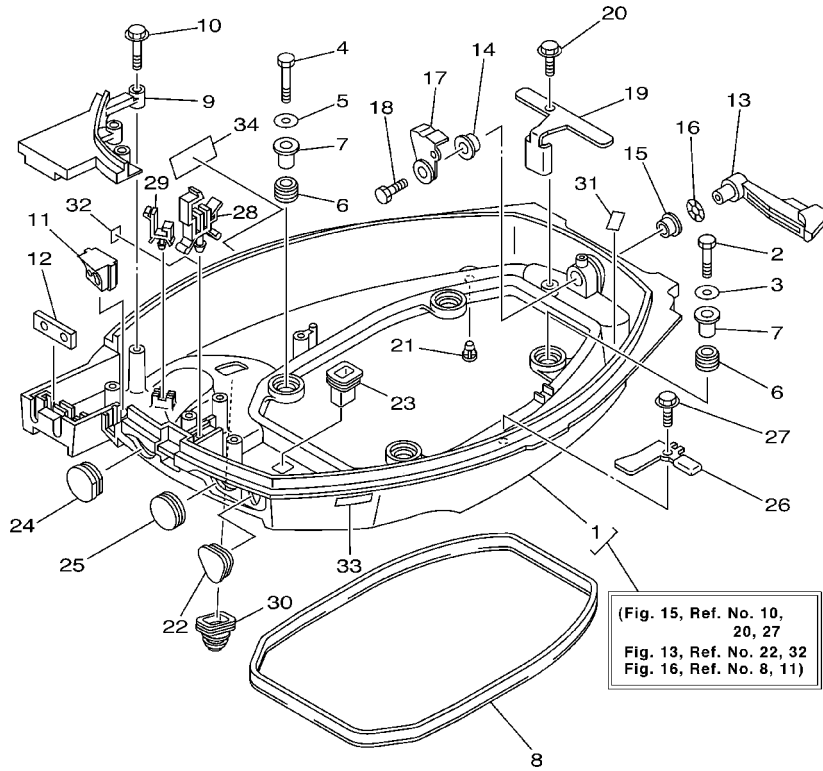
REF. NO.	PART NO. NO. PIECES	DESCRIPTION DESCRIPTION	69A1		REMARKS REMARQUES
1	69A-42710-11-4D	BOTTOM COWLING ASSY ENS. EMBASE	1		WITH TAPPING BOLT
2	97095-06035	BOLT BOULON	2		
3	92995-06600	WASHER RONDELLE	2		
4	97095-06025	BOLT BOULON	2		
5	92995-06600	WASHER RONDELLE	2		
6	90480-15M31	GROMMET PASSE-FIL	4		
7	90387-06M52	COLLAR COLLERETTE	4		
8	66M-42716-00	RUBBER, SEAL 1 JOINT EN CAOUTCHOUC 1	1		
9	66M-42738-00-4D	PLATE, FITTING ETRIER	1		
10	90109-06M82	BOLT BOULON	3		
11	66M-42725-20	GROMMET PASSE-FIL	1		
12	62Y-42727-00	GROMMET PASSE-FIL	1		
13	66M-42815-00-4D	LEVER, CLAMP LEVIER, PRESSE	1		
14	90386-12M37	BUSH DOUILLE	1		
15	90386-12MA2	BUSH DOUILLE	1		
16	90206-12052	WASHER, WAVE RONDELLE, ONDULEE	1		
17	6L2-42816-00	LEVER, CLAMP LEVIER, PRESSE	1		
18	97095-06012	BOLT BOULON	1		
19	66M-42766-00	BRACKET 2 SUPPORT 2	1		
20	90109-06M86	BOLT BOULON	1		
21	6H3-44391-01	NIPPLE, HOSE RACCORD D'ESSENCE	1		
22	65W-26326-10	GROMMET RONDELLE CAOUTCHOUC	1		
23	682-42727-00	GROMMET PASSE-FIL	1		
24	682-42724-00	GROMMET PASSE-FIL	1		
25	65W-42726-10	GROMMET PASSE-FIL	1		
26	66M-42743-00	BRACKET SUPPORT	2		
27	90109-06M86	BOLT BOULON	2		



69A1300-2150

FIG. 15 BOTTOM COWLING

CAPOT INFERIEUR

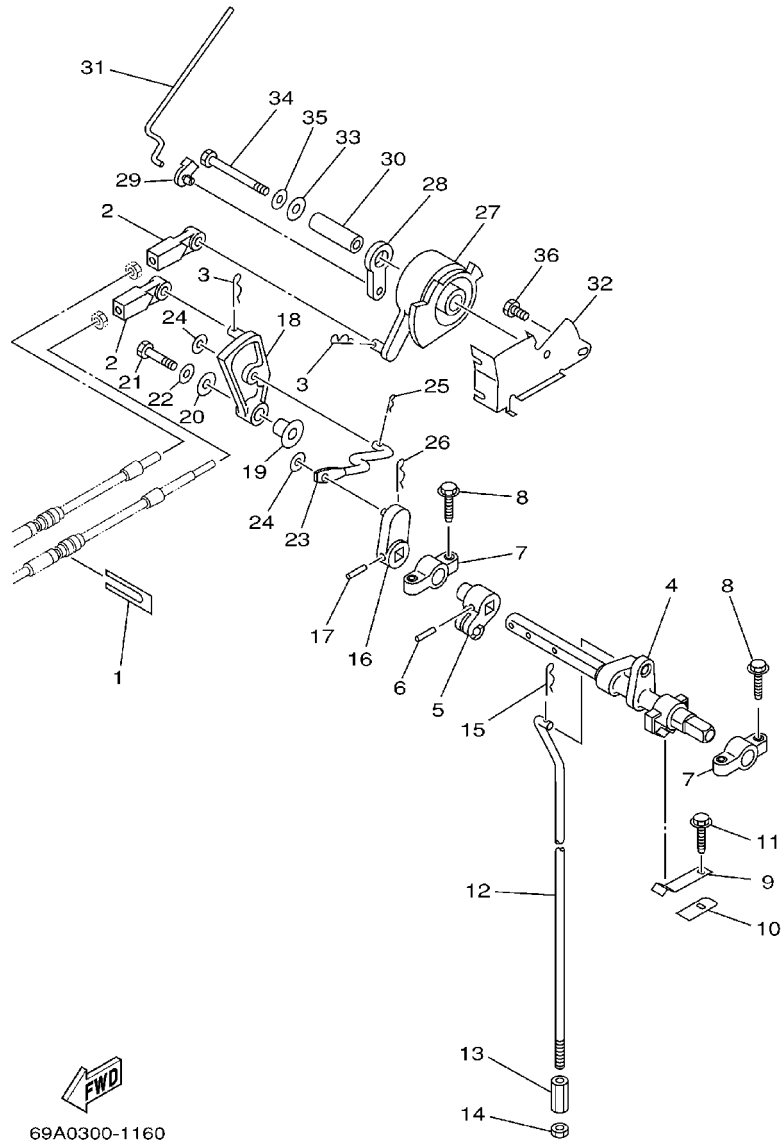


REF. NO.	PART NO. NO. PIECES	DESCRIPTION DESCRIPTION	69A1				REMARKS REMARQUES
28	90465-25M95	CLAMP BRIDE	1				
29	90464-09M13	CLAMP BRIDE	1				
30	688-42726-10	GROMMET PASSE-FIL	1				
31	62Y-82377-00	LABEL ETIQUETTE	1				
32	6A1-28176-00	LABEL, CAUTION ETIQUETTE, RECOMMANDATION	1				
33	6E3-8257H-00	PLATE, MARK PLAQUE, ADHESIF	1				
34	6G8-13444-51	MARK MAKER	1				

69A1300-2150

FIG. 16 CONTROL

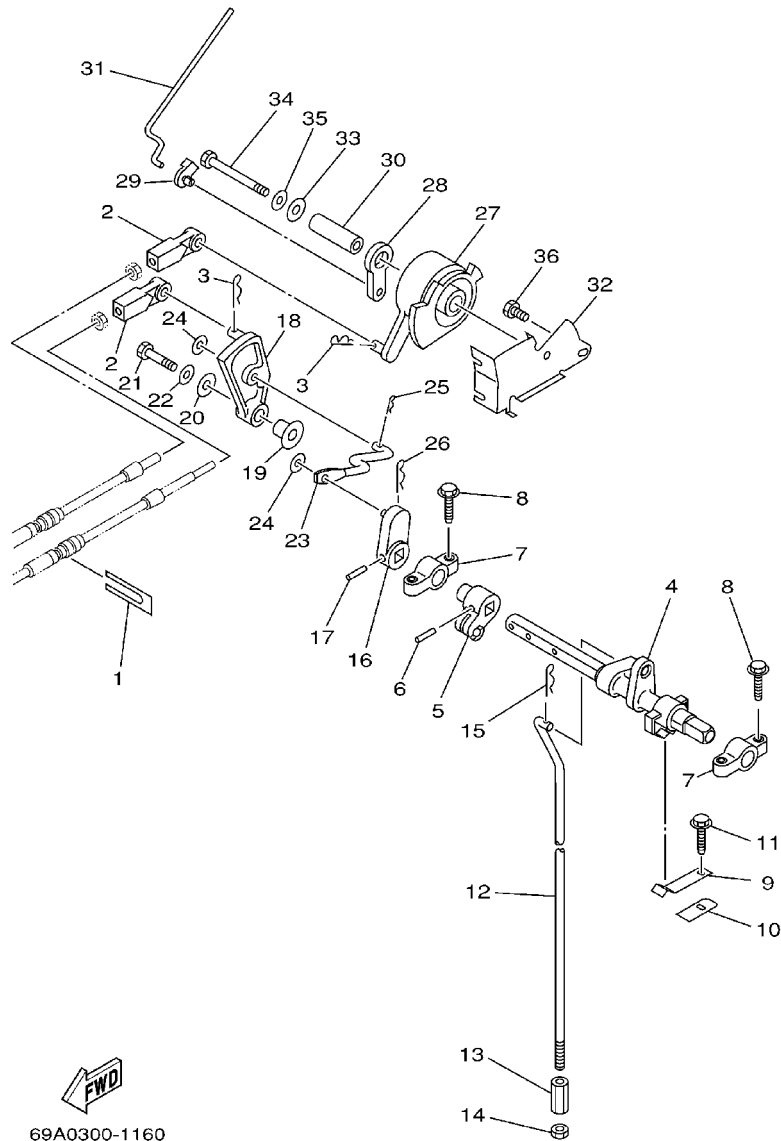
COMMANDE



69A0300-1160

REF. NO.	PART NO. NO. PIECES	DESCRIPTION DESCRIPTION	69A1			REMARKS REMARQUES
1	6H3-48538-00	CLAMP, CABLE 1 COLLIER	1			
2	663-48344-00	CABLE END, REMOTE CONTROL CHAPE CABLE	2			
3	90468-18008	CLIP JONC	2			
4	65W-44121-00	LEVER, SHIFT ROD LEVIER, TIGE D'INVERSION	1			
5	66M-44122-00	BUSHING, SHIFT ROD LEVER DOUILLE, LEVIER D'EMBAYAGE	1			
6	90254-03M05	PIN, SPRING RIVET, TETE TRONCONIQUE	1			
7	6F5-41662-00	BRACKET SUPPORT	2			
8	90109-06M81	BOLT BOULON	4			
9	65W-44116-00	SPRING RESSORT	1			
10	66R-44114-00	STOPPER PLAQUETTE	1			
11	90109-06M86	BOLT BOULON	1			
12	66M-44143-00	ROD, SHIFT TIGE D'EMBAYAGE	1			S
	66M-44143-10	ROD, SHIFT TIGE D'EMBAYAGE	1			L
13	90170-06015	NUT ECROU	1			
14	95380-06700	NUT ECROU	1			
15	90468-18008	CLIP JONC	1			
16	65W-44142-00	JOINT AXE	1			
17	90254-03M05	PIN, SPRING RIVET, TETE TRONCONIQUE	1			
18	65W-44125-00	LEVER, SHIFT ROD LEVIER, TIGE D'INVERSION	1			
19	90387-06M29	COLLAR COLLERETTE	1			
20	90201-06M31	WASHER, PLATE RONDELLE, PLATE	1			
21	97095-06025	BOLT BOULON	1			
22	92995-06600	WASHER RONDELLE	1			
23	66M-44192-00	JOINT, ROD 1 RACCORD 1, BIELLETTE	1			
24	90201-05M06	WASHER, PLATE RONDELLE, PLATE	2			
25	90468-10005	CLIP JONC	1			
26	90468-18008	CLIP JONC	1			

D4



FWD
69A0300-1160

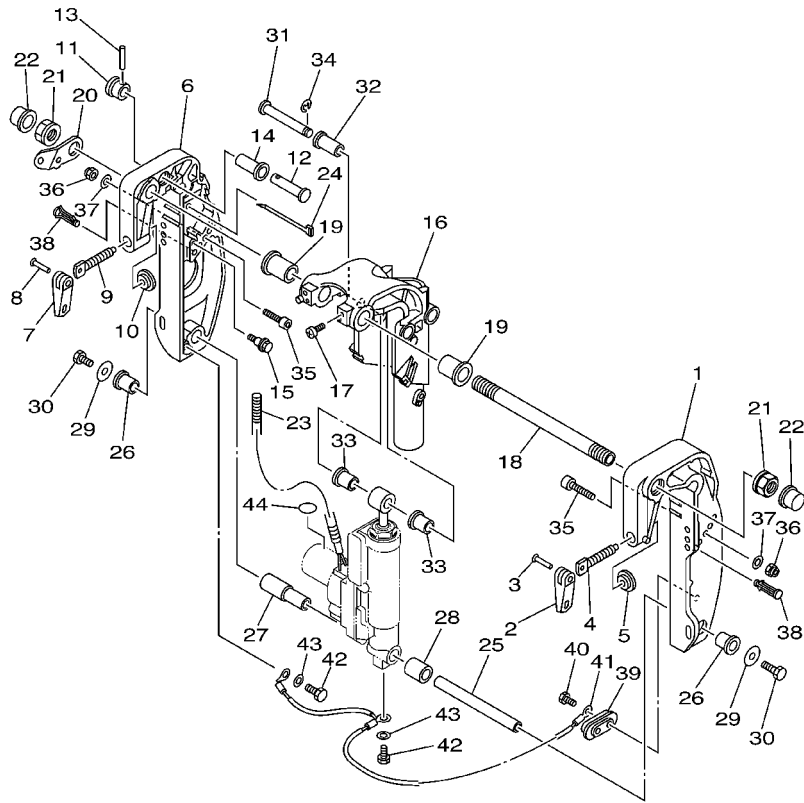
FIG. 16 CONTROL

COMMANDE

REF. NO.	PART NO. NO. PIECES	DESCRIPTION DESCRIPTION	69A1				REMARKS REMARQUES
27	65W-41638-00	PULLEY POULIE	1				
28	65W-41283-00	LEVER, FREE ACCEL. LEVIER	1				
29	661-41262-02	JOINT, CHOKE LEVER RACCORD, LEVIER DE STARTER	1				
30	90387-06M08	COLLAR COLLERETTE	1				
31	66M-41211-00	LINK, ACCEL. BIELLETTTE, ACCELERATION	1				
32	65W-14497-01	STAY, THROTTLE WIRE SUPPORT DE BOISSEAU	1				
33	90201-06M31	WASHER, PLATE RONDELLE, PLATE	1				
34	97095-06055	BOLT BOULON	1				
35	92995-06600	WASHER RONDELLE	1				
36	97095-06010	BOLT BOULON	1				

FIG. 17 BRACKET 1

SUPPORT 1



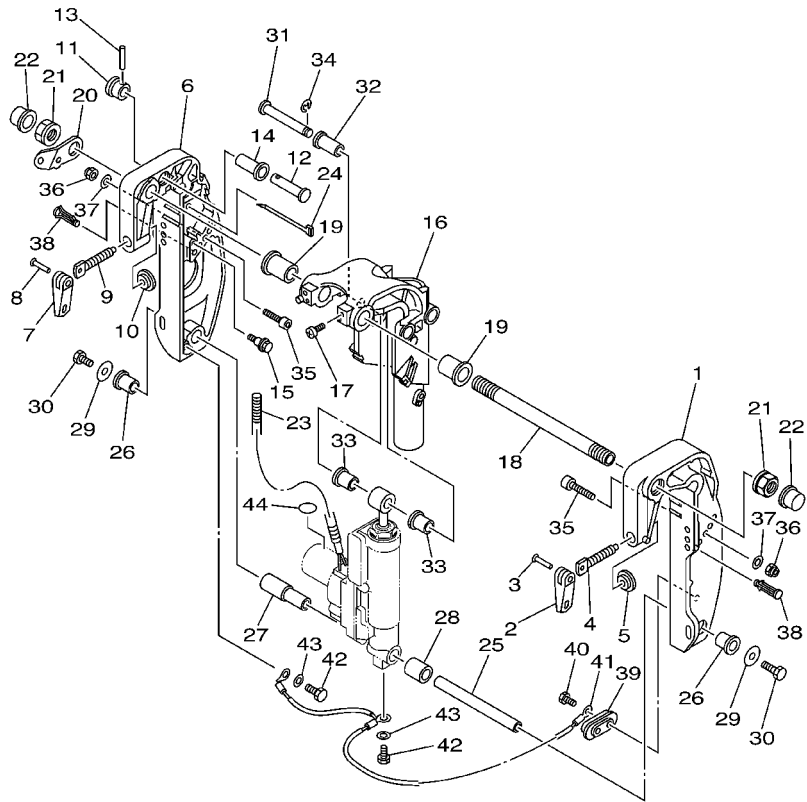
REF. NO.	PART NO. NO. PIECES	DESCRIPTION DESCRIPTION	69A1			REMARKS REMARQUES
1	69A-43111-00-4D	BRACKET, CLAMP PRESSE	1			
2	6E0-43118-01	HANDLE, TRANSOM CLAMP POIGNEE DE VIS DE PRESSE	1			
3	90243-04M01	PIN GOUPILLE	1			
4	6E7-43116-00	SCREW, TRANSOM CLAMP VIS DE PRESSE	1			
5	648-43114-01	PAD, TRANSOM CLAMP RONDELLE D'APPUI	1			
6	69A-43112-00-4D	BRACKET, CLAMP PRESSE	1			
7	6E0-43118-01	HANDLE, TRANSOM CLAMP POIGNEE DE VIS DE PRESSE	1			
8	90243-04M01	PIN GOUPILLE	1			
9	6E7-43116-00	SCREW, TRANSOM CLAMP VIS DE PRESSE	1			
10	648-43114-01	PAD, TRANSOM CLAMP RONDELLE D'APPUI	1			
11	65W-43192-00	KNOB, STOPPER BOUTON, BUTEE DE RELEVAGE	1			
12	65W-43191-00	SHAFT, STOPPER AXE, BUTEE	1			
13	91690-30018	PIN, SPRING GOUPILLE, ELASTIQUE	1			
14	90386-14MA1	BUSH DOUILLE	1			
15	90109-06M04	BOLT BOULON	1			
16	69A-43311-00-4D	BRACKET, SWIVEL 1 SUPPORT, PIVOT 1	1			S
	69A-43311-10-4D	BRACKET, SWIVEL 1 SUPPORT, PIVOT 1	1			L
17	97885-08010	SCREW, PAN HEAD VIS, TETE TRONCONIQUE	2			
18	69A-43131-00	BOLT, CLAMP BRACKET BOULON, PRESSE	1			
19	90386-22MA4	BUSH DOUILLE	2			
20	69A-43113-00	PLATE, CLAMP BRACKET PLAQUETTE, PRESSE	1			
21	90185-22043	NUT, SELF-LOCKING ECROU, AUTO-BLOCANT	2			
22	6G5-43145-01	CAP, CLAMP BRACKET CAPUCHON, PRESSE	2			
23	90446-14MH7	HOSE DURITE	1			
24	90465-13M97	CLAMP BRIDE	1			
25	69G-43818-00	PIN, LOWER SHOCK MOUNT AXE, INFERIEUR AMORTISSEUR	1			
26	90386-16MA7	BUSH DOUILLE	2			



69A1300-2170

FIG. 17 BRACKET 1

SUPPORT 1



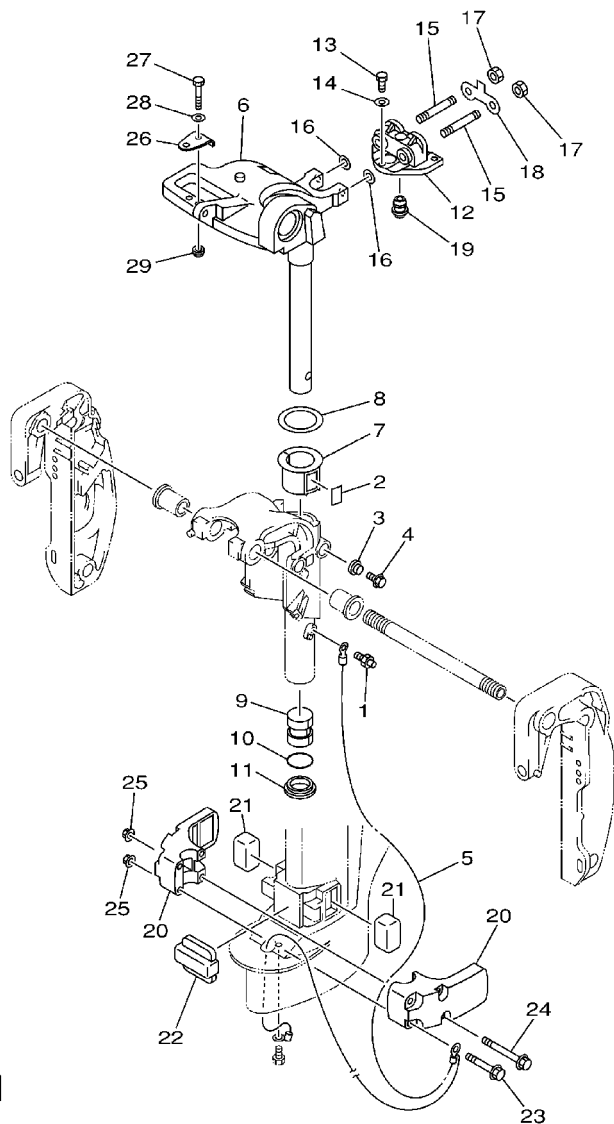
REF. NO.	PART NO. NO. PIECES	DESCRIPTION DESCRIPTION	69A1		REMARKS REMARQUES
27	90386-16MA8	BUSH DOUILLE	1		
28	90387-16M02	COLLAR COLLERETTE	1		
29	90201-08M00	WASHER, PLATE RONDELLE, PLATE	2		
30	97080-08016	BOLT BOULON	2		
31	90249-12M36	PIN GOUPILE	1		
32	90381-12M10	BUSH, SOLID DOUILLE, SOLIDE	1		
33	90381-12M11	BUSH, SOLID DOUILLE, SOLIDE	2		
34	93430-10M00	CIRCLIP CIRCLIP, TYPE S	1		
35	90110-08M05	BOLT, HEXAGON SOCKET HEAD BOULON, TETE HEXAGONALE CREUSE	2		
36	90185-08057	NUT, SELF-LOCKING ECROU, AUTO-BLOCANT	2		
37	92990-08600	WASHER, PLATE RONDELLE, PLATE	2		
38	90338-08M19	PLUG PLOT	4		S
	90338-08M19	PLUG PLOT	2		L
39	65W-45251-00	ANODE ANODE	1		
40	90101-06020	BOLT BOULON	2		
41	63V-82127-00	WIRE, LEAD 2 FIL 2	1		
42	97095-06010	BOLT BOULON	2		
43	92995-06600	WASHER RONDELLE	2		
44	69A-43155-00	MARK 1 ETIQUETTE 1	1		



69A1300-2170

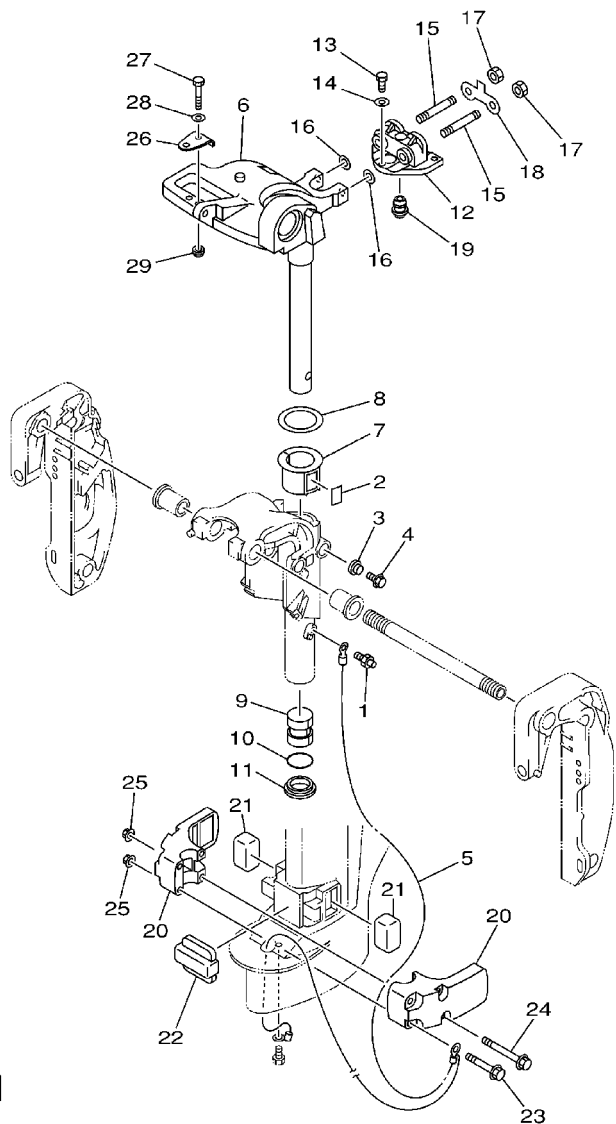
FIG. 18 BRACKET 2

SUPPORT 2



69A0100-0220

REF. NO.	PART NO. NO. PIECES	DESCRIPTION DESCRIPTION	69A1			REMARKS REMARQUES
1	93700-06M03	NIPPLE, GREASE GRAISSEUR	1			
2	63V-42528-00	PLATE, FRICTION PLAQUE, FRICTION	1			
3	689-43373-01	SEAL, DAMPER JOINT	1			
4	90105-06M07	BOLT, FLANGE BOULON	1			
5	66M-82127-00	WIRE, LEAD 2 FIL 2	1			S
	69A-82127-00	WIRE, LEAD 2 FIL 2	1			L
6	66M-42511-01-4D	BRACKET, STEERING CADRE, DIRECTION	1			S
	66M-42511-11-4D	BRACKET, STEERING CADRE, DIRECTION	1			L
7	63V-42537-00	BUSHING, PIVOT SHAFT COUSSINET	1			
8	90201-45M28	WASHER, PLATE RONDELLE, PLATE	1			
9	90386-30048	BUSH DOUILLE	1			
10	93210-29M94	O-RING JOINT TORIQUE	1			
11	90386-30M60	BUSH DOUILLE	1			
12	66M-44514-00-4D	MOUNT DAMPER, UPPER SIDE SILENT-BLOC, SUPERIEUR LATERAL	1			
13	97075-06025	BOLT BOULON	3			
14	92995-06600	WASHER RONDELLE	3			
15	90116-08M54	BOLT, STUD GOUJON	2			
16	90201-08M06	WASHER, PLATE RONDELLE, PLATE	2			
17	95380-08600	NUT ECROU	2			
18	66M-44526-00	PLATE PLAQUE	1			
19	66M-44366-00	DAMPER, WATER SEAL JOINT, TUBE D'EAU	1			
20	66M-44551-00-4D	HOUSING, LOWER MOUNT RUBBER BOITIER, SILENT-BLOC INFERIEUR	2			
21	682-44555-30	MOUNT DAMPER, LOWER SIDE SILENT-BLOC, INFERIEUR LATERAL	2			
22	66M-44557-00	MOUNT DAMPER, LOWER FRONT SILENT-BLOC, INFERIEUR AVANT	1			
23	90119-08M45	BOLT, WITH WASHER BOULON, AVEC RONDELLE	2			
24	90119-08M46	BOLT, WITH WASHER BOULON, AVEC RONDELLE	2			
25	90179-08M34	NUT ECROU	4			



69A0100-0220

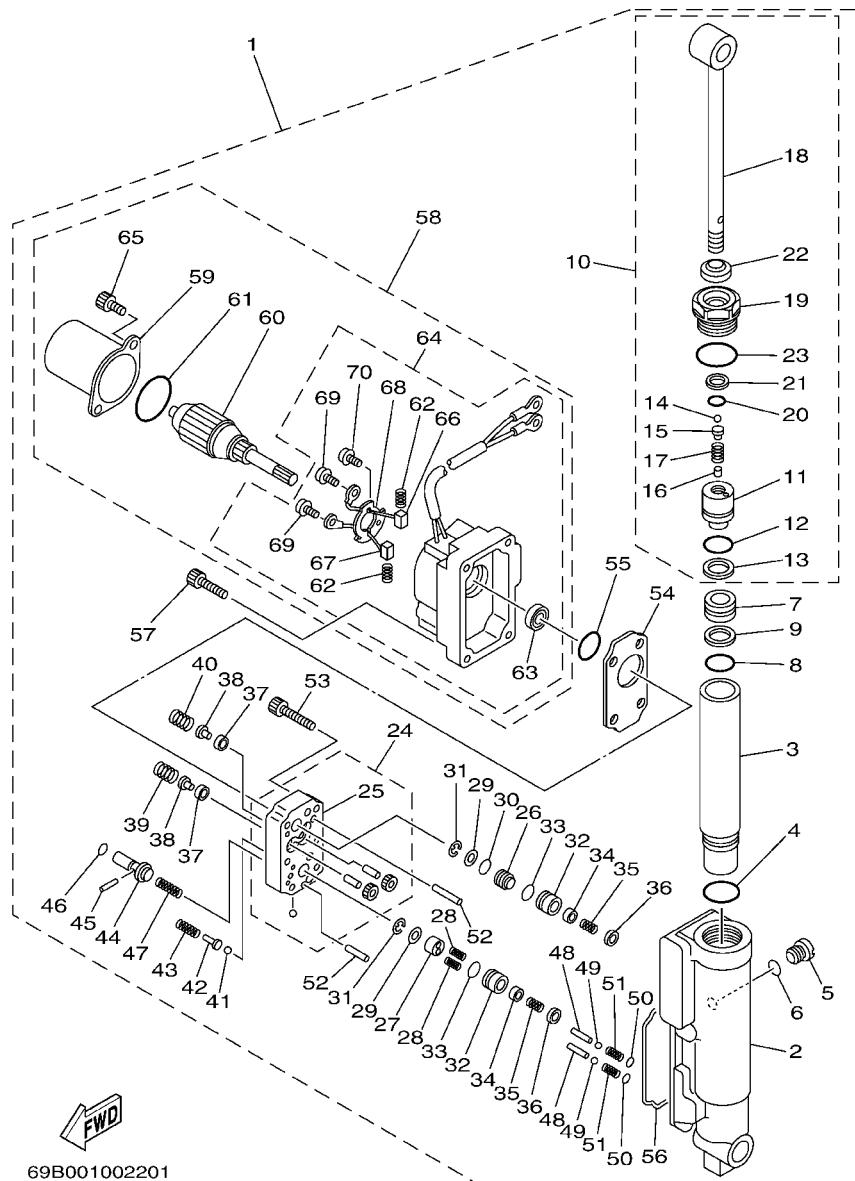
FIG. 18 BRACKET 2

SUPPORT 2

REF. NO.	PART NO. NO. PIECES	DESCRIPTION DESCRIPTION	69A1				REMARKS REMARQUES
26	63V-48511-01	HOOK, STEERING ATTACHE, DIRECTION	1				
27	97075-08035	BOLT BOULON	1				
28	92995-08600	WASHER RONDELLE	1				
29	90185-08057	NUT, SELF-LOCKING ECROU, AUTO-BLOCANT	1				

FIG. 19 POWER TILT ASSY

PUISSANCE PARER ET INCLINER

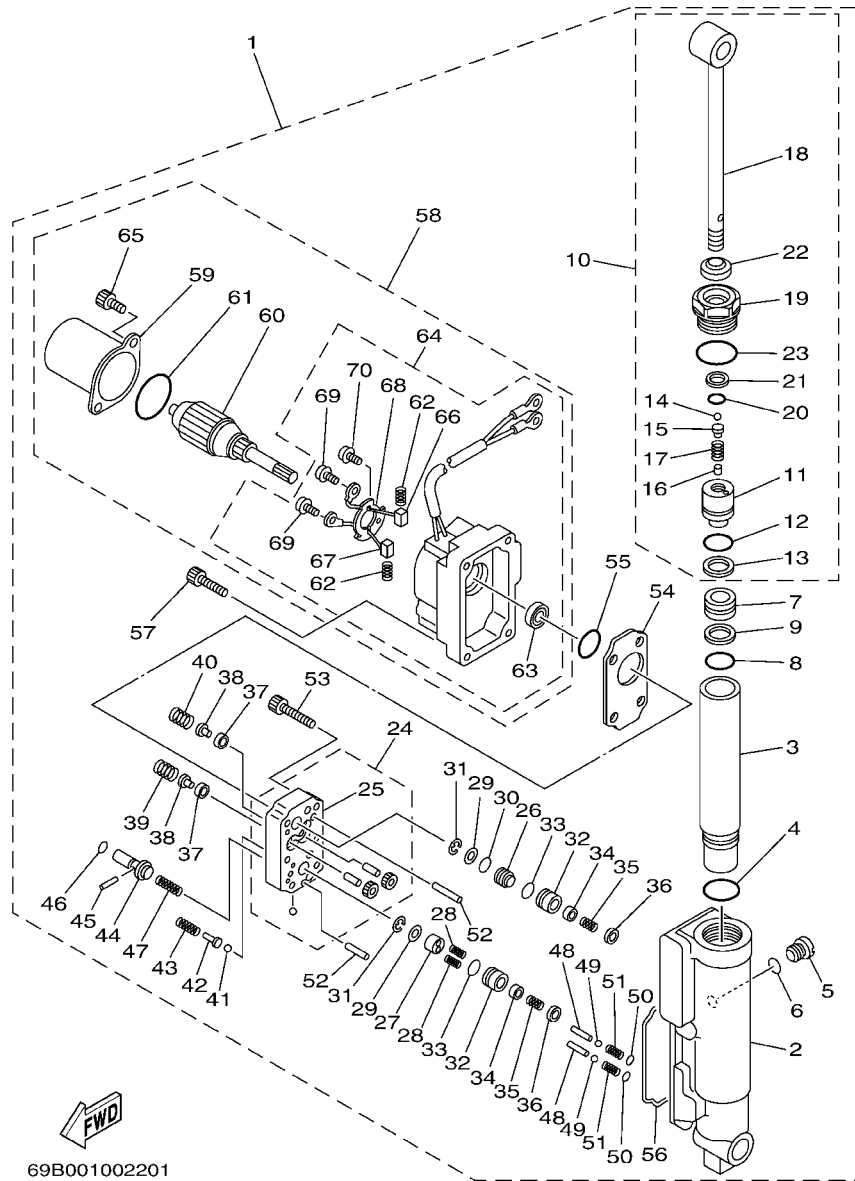


69B001002201

REF. NO.	PART NO. NO. PIECES	DESCRIPTION DESCRIPTION	69A1	REMARKS REMARQUES
1	69A-43840-00-4D	POWER TILT ASSY PUISSANCE INCLINER (ENS.)	1	
2	69A-4380K-00	.CYLINDER, TILT SUB ASSY .CYLINDRE	1	
3	69A-22471-00	.CASE, CYLINDER .BOITIER, CYLINDRE	1	
4	93210-27666	.O-RING .JOINT TORIQUE	1	
5	6H1-4388E-11	.PLUG, TAPER SCREW .BOUCHON	1	
6	93210-07003	.O-RING .JOINT TORIQUE	1	
7	69A-43814-00	.PISTON, FREE .PISTON	1	
8	93210-21276	.O-RING .JOINT TORIQUE	1	
9	69A-43872-00	.RING, BACK UP .RESSORT	1	
10	69A-43810-00	.TILT PISTON SUB ASSY .INCLINER PISTON AUXILIAIRE(EN	1	
11	69A-4380D-00	..PISTON COMP. ..PISTON COMP.	1	
12	93210-21276	..O-RING ..JOINT TORIQUE	1	
13	69A-43872-00	..RING, BACK UP ..RESSORT	1	
14	93505-32038	..BALL ..BILLE	1	
15	65W-4386A-00	..PIN, ABSORBER VALVE ..GOUPILLE, SOUPEPE	1	
16	93604-06136	..PIN, DOWEL ..GOUJON	1	
17	69A-43857-00	..SPRING, ABSORBER VALVE ..RESSORT	1	
18	69A-43801-00	..ROD ..TIGE	1	
19	69A-43811-00	..SCREW, CYLINDER END ..VIS, CYLINDRE RACCORD	1	
20	6H1-43866-00	..O-RING ..JOINT TORIQUE	1	
21	69A-43871-00	..RING, BACK UP ..SEGMENT	1	
22	69A-43812-00	..SEAL, DUST ..JOINT	1	
23	69A-43869-00	..O-RING ..JOINT TORIQUE	1	
24	69A-43830-00	.GEAR PUMP ASSY .POMPE A PIGNON (ENS.)	1	
25	69A-4380C-00	..GEAR HOUSING ASSY ..CARTER COMP,ENGRENAGE	1	
26	69A-43841-00	.PISTON, SHUTTLE .PISTON	1	
27	69A-4384M-00	.PISTON, SHUTTLE 2 .PISTON 2	1	

FIG. 19 POWER TILT ASSY

PUISSANCE PARER ET INCLINER

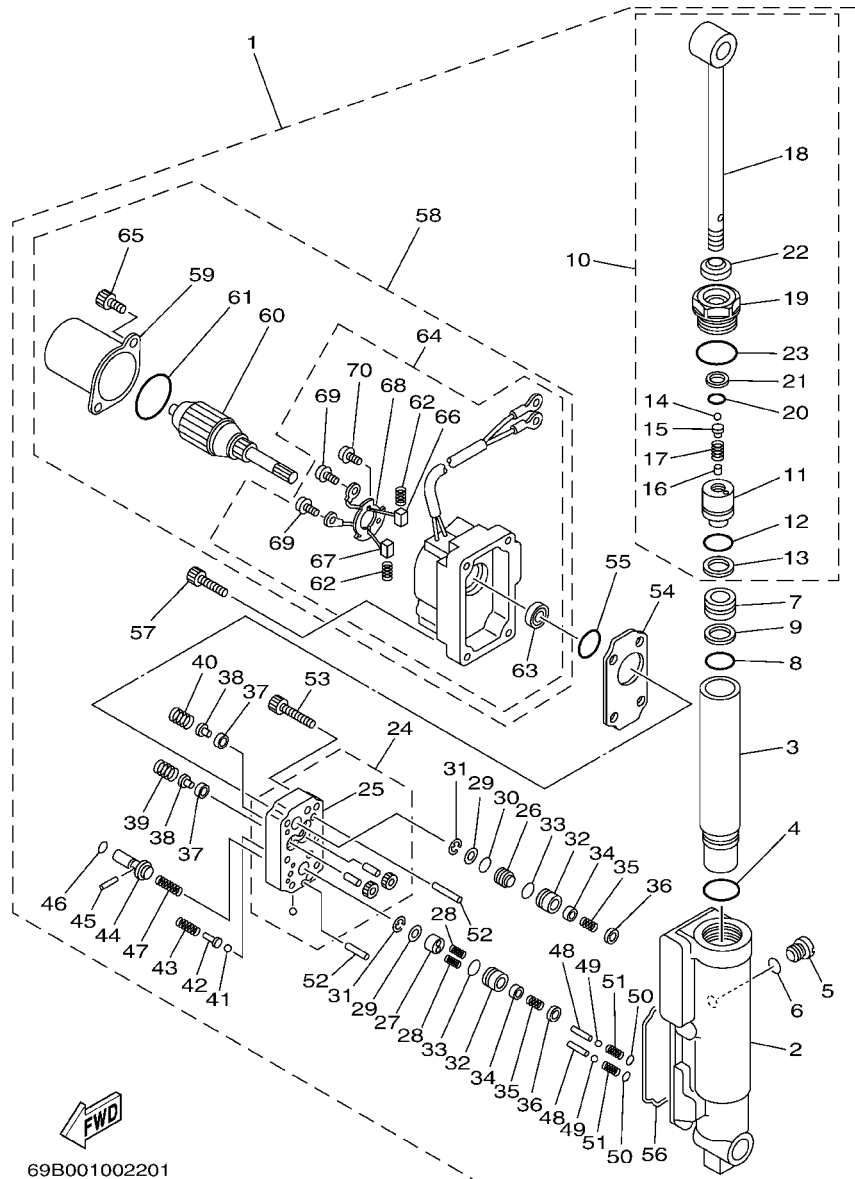


69B001002201

REF. NO.	PART NO. NO. PIECES	DESCRIPTION DESCRIPTION	69A1				REMARKS REMARQUES
28	62Y-43894-00	.SPRING, SHUTTLE RETURN .RESSORT	2				
29	69A-4384F-00	.SEAL, MAIN VALVE .JOINT	2				
30	6H1-43883-00	.O-RING .JOINT TORIQUE	1				
31	99001-03600	.CIRCLIP .CIRCLIP	2				
32	69A-4382G-00	.VALVE SEAT .JEU DE POINTEAUX	2				
33	93210-12N52	.O-RING .JOINT TORIQUE	2				
34	6T4-43808-00	.SEAT VALVE COMP. 1 .SIEGE VALVE COMP. 1	2				
35	6T4-43853-00	.SPRING, MAIN VALVE .RESSORT	2				
36	6H1-43816-00	.FILTER 1 .FILTRE 1	2				
37	6H1-4384G-11	.SEAL, RELIEF VALVE .JOINT	2				
38	6H1-43844-10	.PIN, VALVE SUPPORT .GOUPILLE	2				
39	69A-43855-00	.SPRING, UP RELIEF .RESSORT	1				
40	6H1-43856-10	.SPRING, DOWN RELIEF .RESSORT	1				
41	93501-08001	.BALL .BILLE	2				
42	69A-4386A-00	.PIN, ABSORBER VALVE .GOUPILLE, SOUPEPE	2				
43	69A-43824-00	.SPRING, DOWN RELIEF 2 .RESSORT 2	2				
44	69A-43848-00	.ROD, MANUAL RELEASE .TIGE	1				
45	93602-15250	.PIN, DOWEL .GOUJON	1				
46	93210-06001	.O-RING .JOINT TORIQUE	1				
47	69A-43854-00	.SPRING, MANUAL RELEASE .RESSORT	1				
48	69A-4381G-00	.PIN 1 .GOUPILLE 1	2				
49	93501-08001	.BALL .BILLE	2				
50	6H1-43883-00	.O-RING .JOINT TORIQUE	2				
51	69A-4384H-00	.SPRING .RESSORT	2				
52	93606-14081	.PIN, DOWEL .GOUJON	2				
53	91317-05025	.BOLT .BOULON	6				
54	69A-43816-00	.FILTER 1 .FILTRE 1	1				

FIG. 19 POWER TILT ASSY

PUISSANCE PARER ET INCLINER



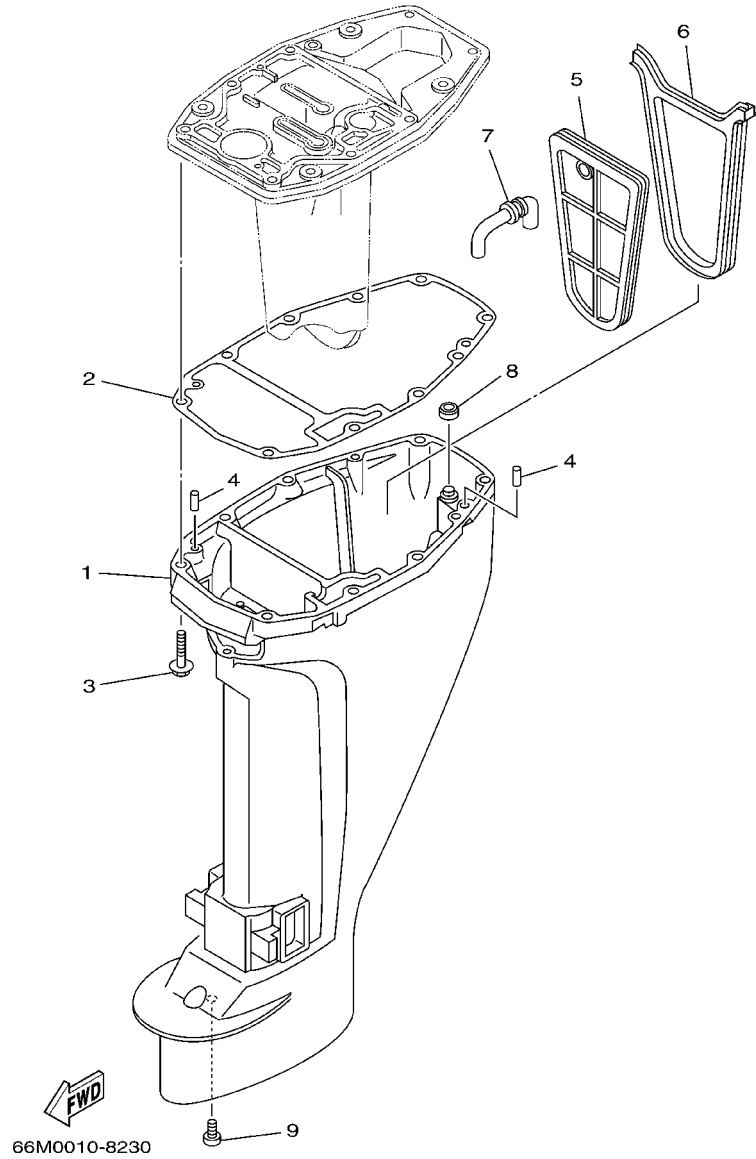
REF. NO.	PART NO. NO. PIECES	DESCRIPTION DESCRIPTION	69A1				REMARKS REMARQUES
55	N35-43862-10	..O-RING ..JOINT TORIQUE	1				
56	69A-23129-00	..GASKET, DRAIN PLUG ..JOINT, PLOT DE VIDANGE	1				
57	69A-43878-00	..BOLT, SOCKET ..BOULON	4				
58	69A-43880-00	..MOTOR ASSY ..MOTEUR (ENS.)	1				
59	65W-43804-00	..STATOR ASSY ..STATOR (ENS.)	1				
60	65W-43805-00	..ARMATURE ASSY ..INDUIT (ENS.)	1				
61	65W-43869-00	..O-RING ..JOINT TORIQUE	1				
62	65W-4386K-00	...SPRING, BRUSH ...RESSORT, BALAI	2				
63	65W-43882-00	...OIL SEAL ...JOINT SP	1				
64	69A-43881-00	..FRAME, END ..BAT	1				
65	65W-43887-00	..BOLT, THROUGH ..BOULON	2				
66	65W-43892-00	...BRUSH ...BALAI	1				
67	65W-43891-00	...BRUSH ...BALAI	1				
68	65W-4380F-00	...PLATE, BRUSH HOLDER ...PLAQUE	1				
69	65W-43879-00	...SCREW, WITH WASHER ...VIS AVECTRONDELLE	2				
70	65W-4388E-00	...BOLT ...BOULON	1				



69B001002201

FIG. 20 UPPER CASING

FOURREAU



REF. NO.	PART NO. NO. PIECES	DESCRIPTION DESCRIPTION	69A1			REMARKS REMARQUES
1	66M-45111-00-4D	CASING, UPPER FOURREAU	1			S
	66M-45111-10-4D	CASING, UPPER FOURREAU	1			L
2	66M-45113-00	GASKET, UPPER CASING JOINT, TUBE D'ARBRE	1			
3	97575-08545	BOLT, WITH WASHER VIS HEXAGONAL AVC RONDELLE	6			
4	93606-12019	PIN, DOWEL GOUJON	2			
5	66M-45126-00	PLATE, SEAL DAMPER PLAQUETTE	1			
6	66M-45115-00	GASKET, UPPER CASING JOINT, TUBE D'ARBRE	1			
7	66M-45136-00	PIPE DURITE	1			
8	66M-45128-00	SEAL 2 JOINT 2	1			
9	90157-06M06	SCREW, PAN HEAD VIS, TETE TRONCONIQUE	1			

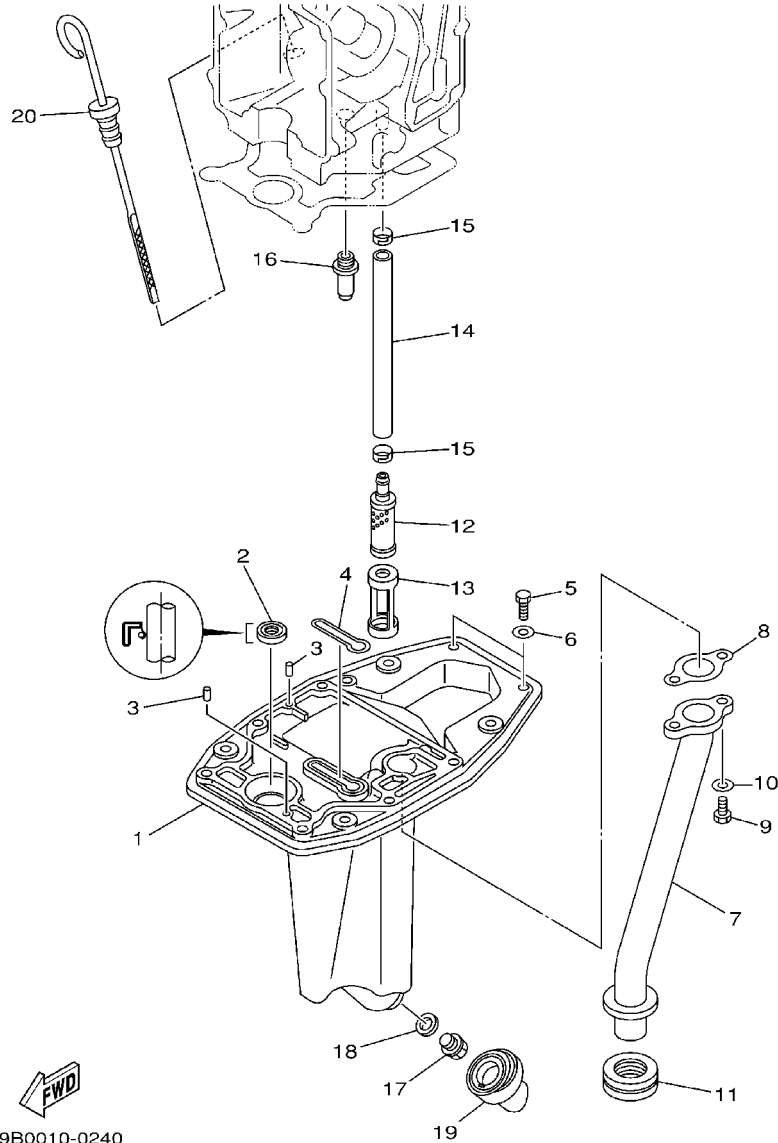


FIG. 21 OIL PAN

VENTILATEUR D'HUILE

REF. NO.	PART NO. NO. PIECES	DESCRIPTION DESCRIPTION	69A1				REMARKS REMARQUES
1	66M-41137-00-5B	GUIDE, EXHAUST COLLECTEUR D'ÉCHAPPEMENT	1				
2	93101-12M63	OIL SEAL JOINT SPY	1				
3	93606-12019	PIN, DOWEL GOUJON	2				
4	66M-11355-00	SEAL, CYLINDER 1 JOINT, SPY CYLINDRE	1				
5	97095-06020	BOLT BOULON	2				
6	92995-06600	WASHER RONDELLE	2				
7	66M-41131-01-94	MANIFOLD, EXT. 1 PIPE D'ÉCHAPPEMENT	1				
8	66M-41133-00	GASKET, EXHAUST MANIFOLD 1 JOINT, PIPE D'ÉCHAPPEMENT	1				
9	97095-06016	BOLT BOULON	2				
10	92995-06600	WASHER RONDELLE	2				
11	66M-41138-00	SEAL, EXT. 1 JOINT DE GROUPE 1	1				
12	66M-13421-00	STRAINER 2 FILTRE 2	1				
13	66M-13417-00	COVER, STRAINER COUVERCLE, FILTRE	1				
14	66M-13416-00	PIPE, OIL 1 DURITE A HUILE	1				
15	66M-24351-00	BAND 1 COLLIER 1	2				
16	6G8-11575-00	RELIEF VALVE ASSY SOUPEPE DE RENTREE D'AIR	1				
17	90340-14M06	PLUG, STRAIGHT SCREW PLOT, FILETE DROIT	1				
18	90430-14M09	GASKET JOINT	1				
19	66M-15316-00	DAMPER, ENGINE MOUNT 1 AMORTISSEUR DE SUPPORT	1				
20	66M-15362-00	PLUG, OIL LEVEL PLOT, NIVEAU D'HUILE	1				

69B0010-0240

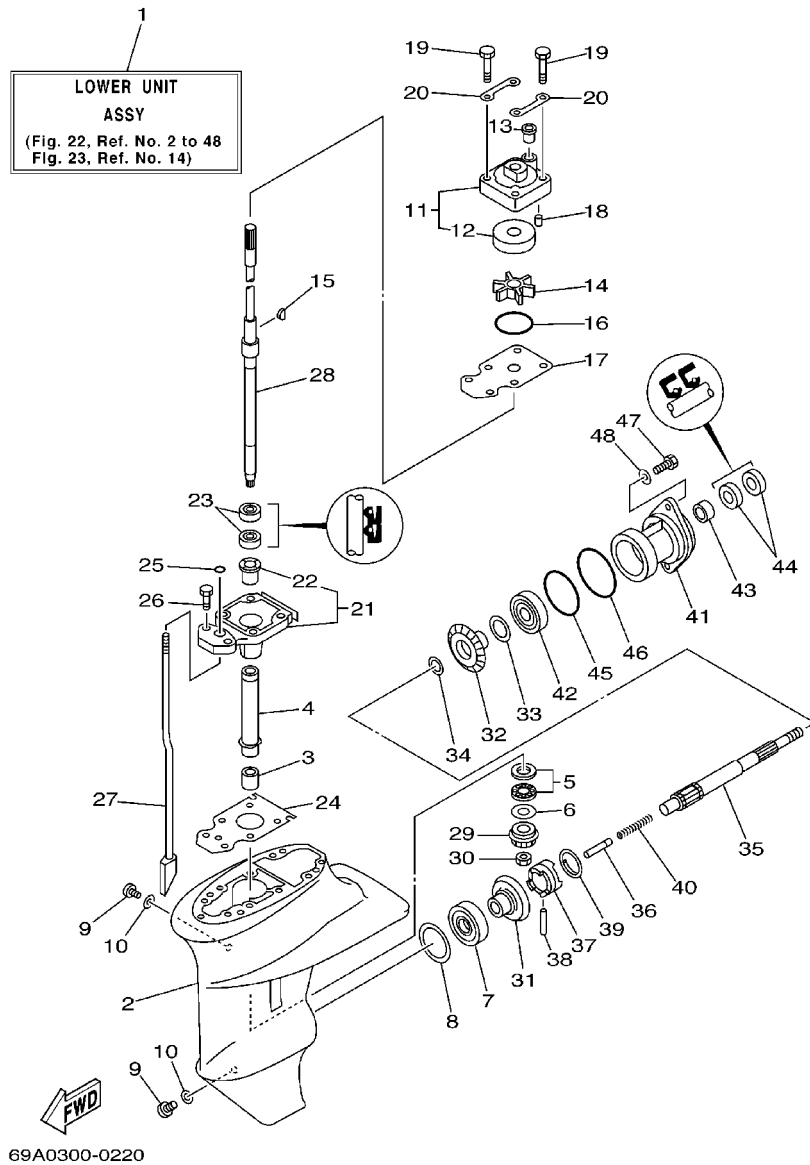


FIG. 22 LOWER CASING. DRIVE 1

BOITIER D'HELICE, TRANSMISSION 1

REF. NO.	PART NO. NO. PIECES	DESCRIPTION DESCRIPTION	69A1			REMARKS REMARQUES
1	69A-45300-01-4D	LOWER UNIT ASSY UNITE INFERIEURE (ENS.)	1			S
	69A-45300-11-4D	LOWER UNIT ASSY UNITE INFERIEURE (ENS.)	1			L
2	66M-45311-00-4D	CASING, LOWER BOITIER D'HELICE	1			S
	63V-45311-01-4D	CASING, LOWER BOITIER D'HELICE	1			L
3	93315-314V8	BEARING ROULEMENT	1			
4	63V-45536-00	SLEEVE, DRIVE SHAFT MANCHON, ARBRE MOTEUR	1			
5	93341-41414	BEARING ROULEMENT	1			
6	6E8-45587-10-13	SHIM (T:1.13MM) CALE (T:1.13MM)	1			UR
	6E8-45587-10-20	SHIM (T:1.20MM) CALE (T:1.20MM)	1			UR
7	93332-00005	BEARING ROULEMENT	1			
8	664-45567-01-10	SHIM (T:0.10MM) CALE (T:0.10MM)	1			UR
	664-45567-01-12	SHIM (T:0.12MM) CALE (T:0.12MM)	1			UR
	664-45567-01-15	SHIM (T:0.15MM) CALE (T:0.15MM)	1			UR
	664-45567-01-18	SHIM (T:0.18MM) CALE (T:0.18MM)	1			UR
	664-45567-01-30	SHIM (T:0.30MM) CALE (T:0.30MM)	1			UR
	664-45567-01-40	SHIM (T:0.40MM) CALE (T:0.40MM)	1			UR
	664-45567-01-50	SHIM (T:0.50MM) CALE (T:0.50MM)	1			UR
9	90340-08002	PLUG, STRAIGHT SCREW PLOT, FILETE DROIT	2			
10	90430-08020	GASKET JOINT	2			
11	63V-44301-00	WATER PUMP HOUSING COMP. CARTER, POMPE A EAU (ENS)	1			
12	63V-44322-00	INSERT, CARTRIDGE .CUVETTE	1			
13	647-44366-00	DAMPER, WATER SEAL JOINT, TUBE D'EAU	1			
14	63V-44352-01	IMPELLER TURBINE	1			
15	664-44338-00	KEY, WOODRUFF CLAVETTE, VOLANT	1			
16	93210-44398	O-RING JOINT TORIQUE	1			
17	63V-44323-00	OUTER PLATE, CARTRIDGE PLAQUE EXTERIEURE	1			
18	93604-12M07	PIN, DOWEL GOUJON	2			

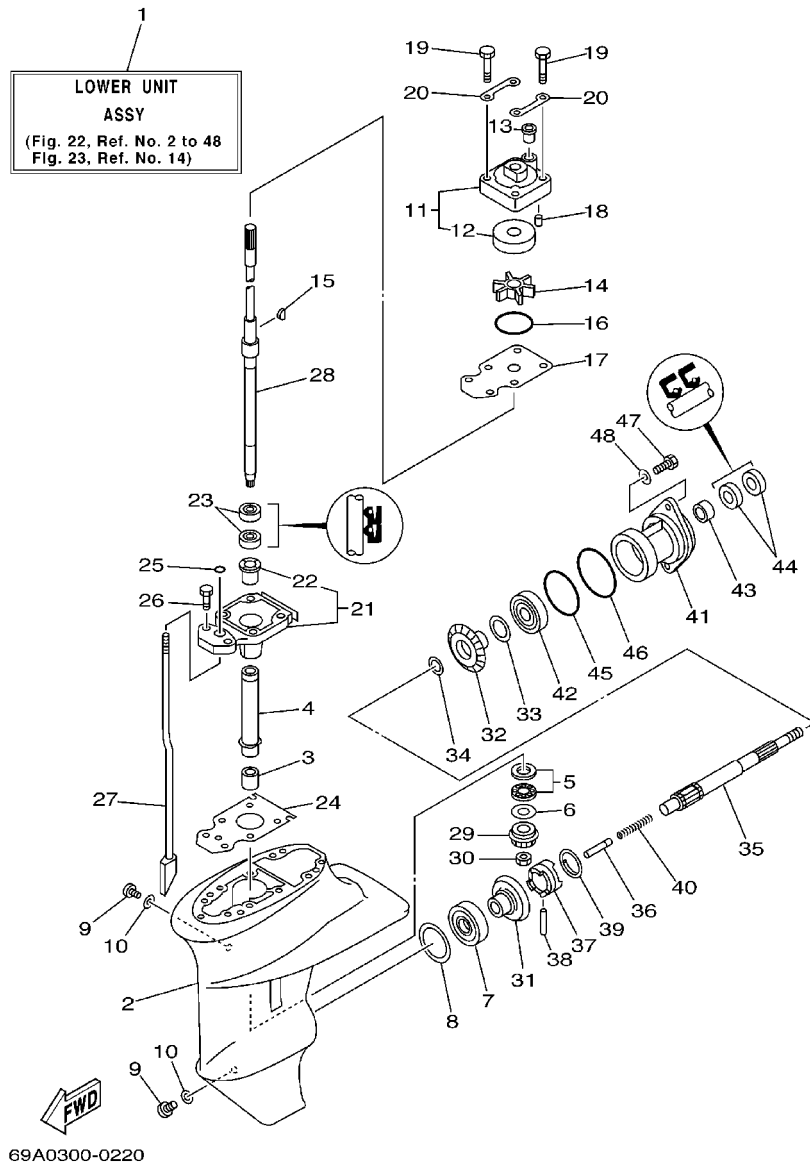
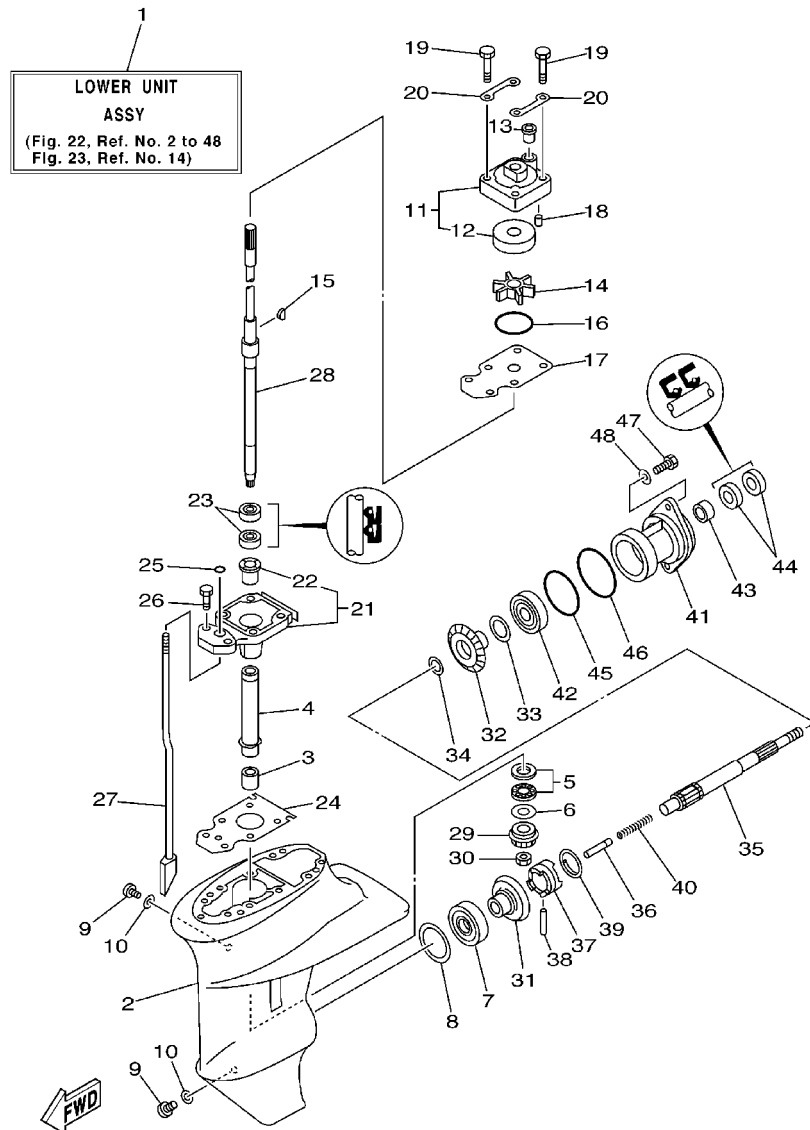


FIG. 22 LOWER CASING. DRIVE 1

BOITIER D'HELICE, TRANSMISSION 1

REF. NO.	PART NO. NO. PIECES	DESCRIPTION DESCRIPTION	69A1				REMARKS REMARQUES
19	97080-08045	BOLT BOULON	4				
20	63V-44328-00	PLATE PLAQUETTE	2				
21	63V-45331-00-5B	HOUSING, BEARING FLASQUE, ROULEMENT	1				
22	90381-14020	.BUSH, SOLID .DOUILLE, SOLIDE	1				
23	93101-20048	OIL SEAL JOINT SPY	2				
24	63V-45315-A0	PACKING, LOWER CASING JOINT, BOITIER D'HELICE	1				
25	93210-06ME6	O-RING JOINT TORIQUE	1				
26	97080-08025	BOLT BOULON	2				
27	63V-44150-00	SHIFT CAM ASSY CAME D'INVERSION	1				S
	66M-44150-10	SHIFT CAM ASSY CAME D'INVERSION	1				L
28	69A-45510-00	DRIVE SHAFT ASSY ARBRE MOTEUR (ENS.)	1				S
	69A-45510-10	DRIVE SHAFT ASSY ARBRE MOTEUR (ENS.)	1				L
29	63V-45551-00	PINION PIGNON D'ATTAQUE	1				
30	90179-08M06	NUT ECROU	1				
31	6E7-45560-01	GEAR PIGNON	1				
32	6E7-45571-00	GEAR PIGNON	1				
33	626-45577-00-01	SHIM (T:0.10MM) CALE (T:0.10MM)	1				UR
	626-45577-00-03	SHIM (T:0.30MM) CALE (T:0.30MM)	1				UR
	626-45577-00-05	SHIM (T:0.50MM) CALE (T:0.50MM)	1				UR
34	90201-17682	WASHER, PLATE RONDELLE, PLATE	1				
35	683-45611-00	SHAFT, PROPELLER ARBRE, HELICE	1				
36	650-45635-00	PLUNGER, SHIFT POUSSOIR D'EMBAYAGE	1				
37	682-45631-00	CLUTCH, DOG CRABOT	1				
38	90250-05010	PIN, STRAIGHT GOUPILLE, DROITE	1				
39	648-45633-00	RING, CROSS PIN JONC, GOUPILLE CRABOT	1				
40	90501-14M06	SPRING, COMPRESSION RESSORT, COMPRESSION	1				
41	683-45361-02-4D	CAP, LOWER CASING COUVERCLE, BOITIER D'HELICE	1				



69A0300-0220

FIG. 22 LOWER CASING. DRIVE 1

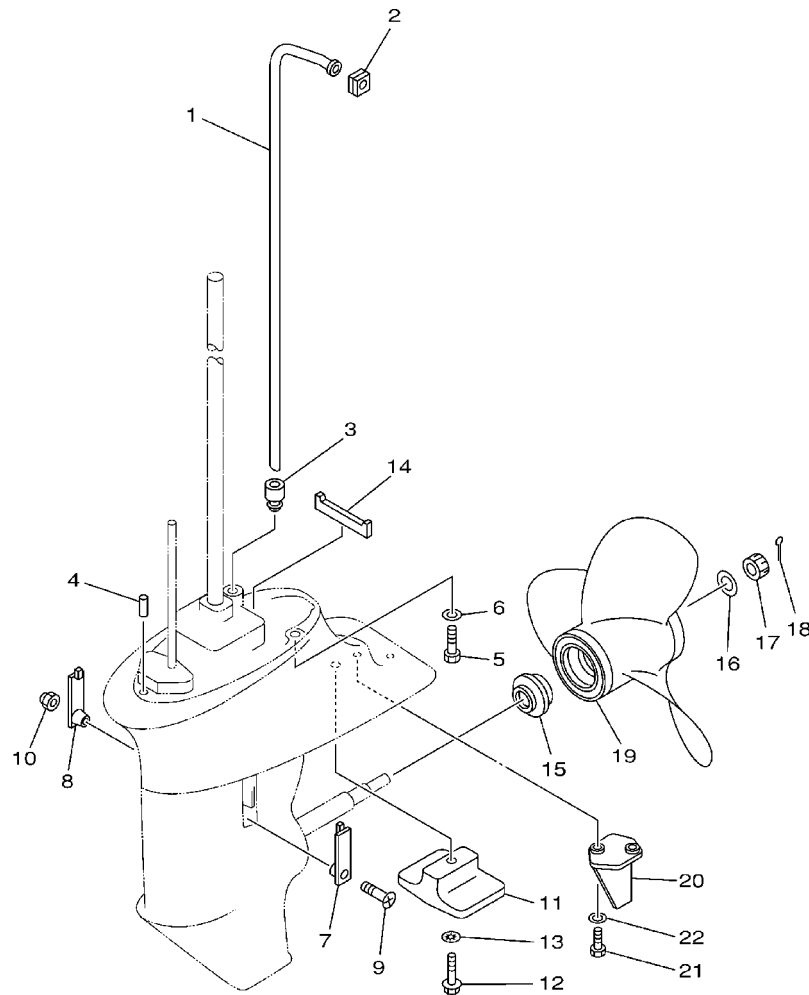
BOITIER D'HELICE, TRANSMISSION 1

REF. NO.	PART NO. NO. PIECES	DESCRIPTION DESCRIPTION	69A1				REMARKS REMARQUES
42	93306-00501	BEARING (B6005) ROULEMENT (B6005)	1				
43	93315-317U2	BEARING ROULEMENT	1				
44	93101-17054	OIL SEAL JOINT SPY	2				
45	93210-57M09	O-RING JOINT TORIQUE	1				
46	93210-56M80	O-RING JOINT TORIQUE	1				
47	97095-06020	BOLT BOULON	2				
48	92995-06600	WASHER RONDELLE	2				
<hr/>							
<hr/>							
<hr/>							
<hr/>							
<hr/>							
<hr/>							
<hr/>							

F3

FIG. 23 LOWER CASING. DRIVE 2

BOITIER D'HELICE, TRANSMISSION 2

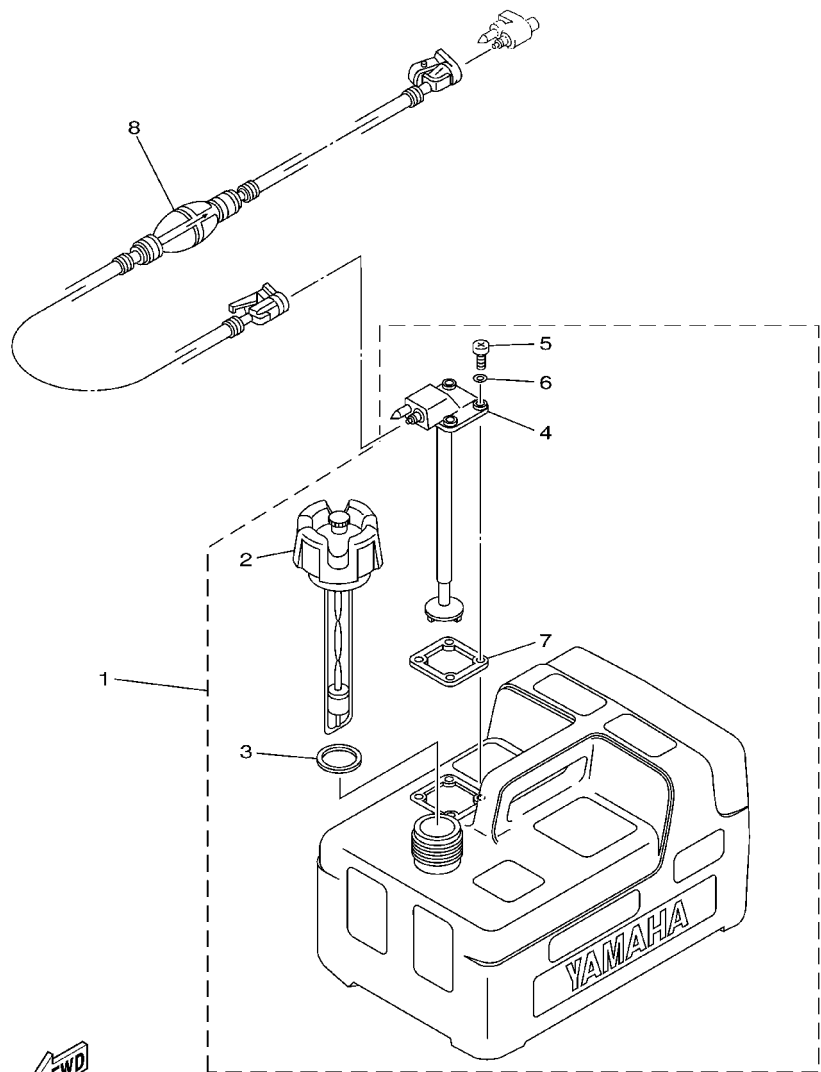


69A0300-0230

REF. NO.	PART NO. NO. PIECES	DESCRIPTION DESCRIPTION	69A1				REMARKS REMARQUES
1	66M-44361-00	TUBE, WATER TUBE D'EAU	1				S
	66M-44361-10	TUBE, WATER TUBE D'EAU	1				L
2	63V-44365-10	DAMPER, WATER SEAL JOINT, TUBE D'EAU	1				
3	63V-44368-00	RUBBER, WATER SEAL 4 CAOUTCHOUC EAU JUNTA 4	1				
4	93604-12M07	PIN, DOWEL GOUJON	2				
5	97075-08030	BOLT BOULON	4				
6	92995-08600	WASHER RONDELLE	4				
7	6G1-45214-00	COVER, WATER INLET GRILLE, ENTREE D'EAU	1				
8	63V-45215-00	COVER, WATER INLET GRILLE, ENTREE D'EAU	1				
9	90152-05M04	SCREW, COUNTERSUNK VIS, TETE NOYEE	1				
10	90185-05002	NUT, SELF-LOCKING ECROU, AUTO-BLOCANT	1				
11	61N-45251-01	ANODE ANODE	1				
12	95895-06030	BOLT, FLANGE BOULON, A COLLERETTE	1				
13	92990-06300	WASHER, INTERNAL TOOTH RONDELLE, DENTURE INTERNE	1				
14	63V-45375-00	DAMPER, SEAL BOURRELET, CAOUTCHOUC	1				
15	6E7-45987-01	SPACER ENTRETOISE	1				
16	90201-10M01	WASHER, PLATE RONDELLE, PLATE	1				
17	90171-10M01	NUT, CASTLE ECROU, CRENELE	1				
18	91490-30020	PIN, COTTER GOUJON, FENDUE	1				
19	683-45941-00-EL	PROPELLER (3X9-1/4"X12"-J) HELICE (3X9-1/4"X12"-J)	1				UR
	683-45943-00-EL	PROPELLER (3X9-1/4"X10-1/2"-J) HELICE (3X9-1/4"X10-1/2"-J)	1				UR
	683-45945-00-EL	PROPELLER (3X9-1/4"X9"-J) HELICE (3X9-1/4"X9"-J)	1				UR
	683-45952-00-EL	PROPELLER (3X9-1/4"X9-3/4"-J) HELICE (3X9-1/4"X9-3/4"-J)	1				UR
	63V-45947-00-EL	PROPELLER (3X9-1/4"X8"-J) HELICE (3X9-1/4"X8"-J)	1				UR
20	66M-45371-00	TAB-TRIM ANODE DERIVE	1				S
21	97095-06016	BOLT BOULON	2				S
22	92995-06600	WASHER RONDELLE	2				S

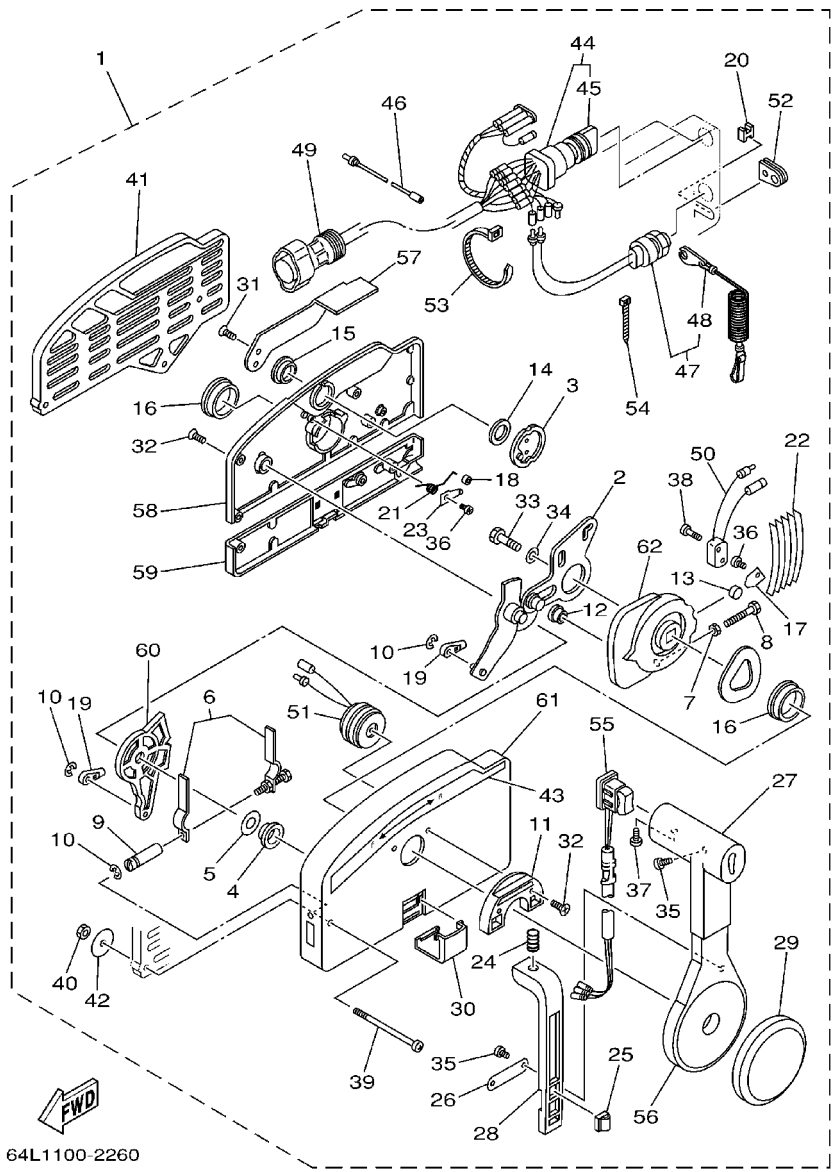
FIG. 24 FUEL TANK

RESERVOIR A CARBURANT



66R0700-9260

REF. NO.	PART NO. NO. PIECES	DESCRIPTION DESCRIPTION	69A1			REMARKS REMARQUES
1	6YL-24201-02	FUEL TANK ASSY RESERVOIR A ESSENCE (ENS.)	1			AP
2	6YL-24610-00	.CAP ASSY .BOUCHON	1			
3	6YL-24641-00	.GASKET, CAP 1 .JOINT 1, BOUCHON	1			
4	6YL-24260-01	.FUEL METER ASSY .INDICATEUR DE CARBURANT	1			
5	90157-05M16	.SCREW, PAN HEAD .VIS, TETE TRONCONIQUE	4			
6	6YL-24329-00	.SEAL .JOINT	4			
7	6YL-24268-01	.GASKET, FUEL METER .JOINT, JAUGE A CARBURANT	1			
8	6YL-24306-52	FUEL PIPE COMP. 1 DURITE A ESSENCE 1	1			AP



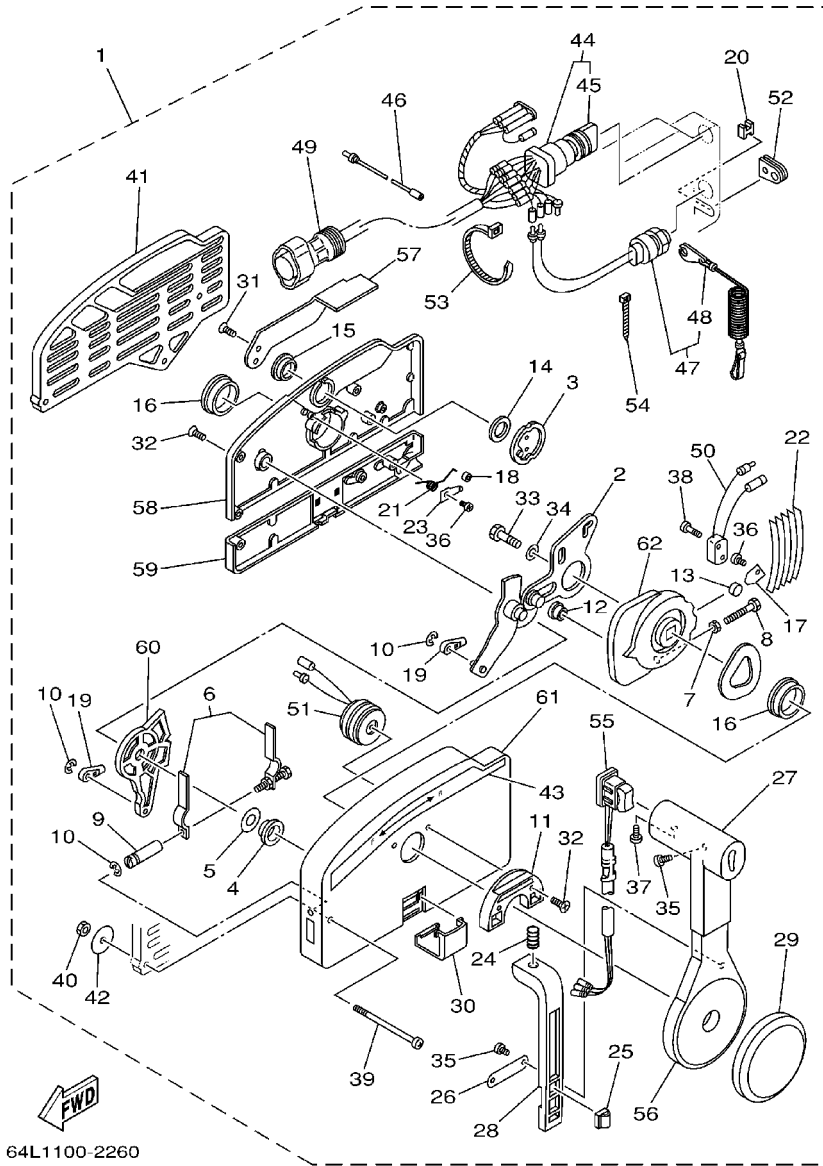
64L1100-2260

FIG. 27 REMOTE CONTROL ASSY BOITIER DE COMMANDE A DISTANCE

REF. NO.	PART NO. NO. PIECES	DESCRIPTION DESCRIPTION	69A1		REMARKS REMARQUES
1	703-48205-17	REMOTE CONTROL ASSY BOITIER DE COMMANDE A DISTANCE	1		AP WITH PT/T SW.
2	703-48261-01	.ARM, THROTTLE .BRAS, ACCELERATION	1		
3	703-48153-00	.SHAFT, FREE ACCEL. .AXE	1		
4	703-48235-00	.BUSHING .COUSSINET	1		
5	703-48268-00	.SPACER .ENTRETOISE	1		
6	703-48264-00	.THROTTLE, FRICTION ACCELERATION	1		
7	95380-05600	.NUT .ECROU	1		
8	97380-05025	.BOLT .BOULON	1		
9	703-48265-00	.SHAFT, FRICTION .AXE, COPILOTE	1		
10	93430-06024	.CIRCLIP .CIRCLIP, TYPE S	3		
11	703-48245-00	.PLATE, LOCK .PLAQUE, VERROU	1		
12	703-48252-00	.ROLLER, CAM .POULIE	1		
13	701-48248-00	.ROLLER, FREE ACCEL. .POULIE	1		
14	703-48198-00	.WASHER, WAVE .RONDELLE, ELASTIQUE ONDULEE	1		
15	703-48243-00	BUSHING COUSSINET	1		
16	703-48236-00	BUSHING 1 POULIE	2		
17	703-48189-00	.RETAINER .FLASQUE	1		
18	703-48234-00	.ROLLER, DETENT .POULIE	1		
19	703-48345-01	.CABLE END, REMOTE CONTROL 2 .CHAPE CABLE	2		
20	703-48358-00	.ANCHOR, CABLE .COLLIER	1		
21	703-48244-00	.SPRING, FREE ACCEL. .RESSORT	1		
22	703-48238-00	.SPRING, DETENT .RESSORT	5		
23	703-48246-00	.SPACER .ENTRETOISE	1		
24	703-48227-00	.SPRING, NEUTRAL LOCK .RESSORT	1		
25	703-82594-00	.CLAMP .BRIDE	1		WITH PT/T SW.
26	703-48226-00	.PLATE, STOPPER .PLAQUETTE	1		
27	703-48222-00	.GRIP, CONTROL LEVER .POIGNEE, COMMANDE LEVIER	1		SINGLE

FIG. 27 REMOTE CONTROL ASSY

BOITIER DE COMMANDE A DISTANCE

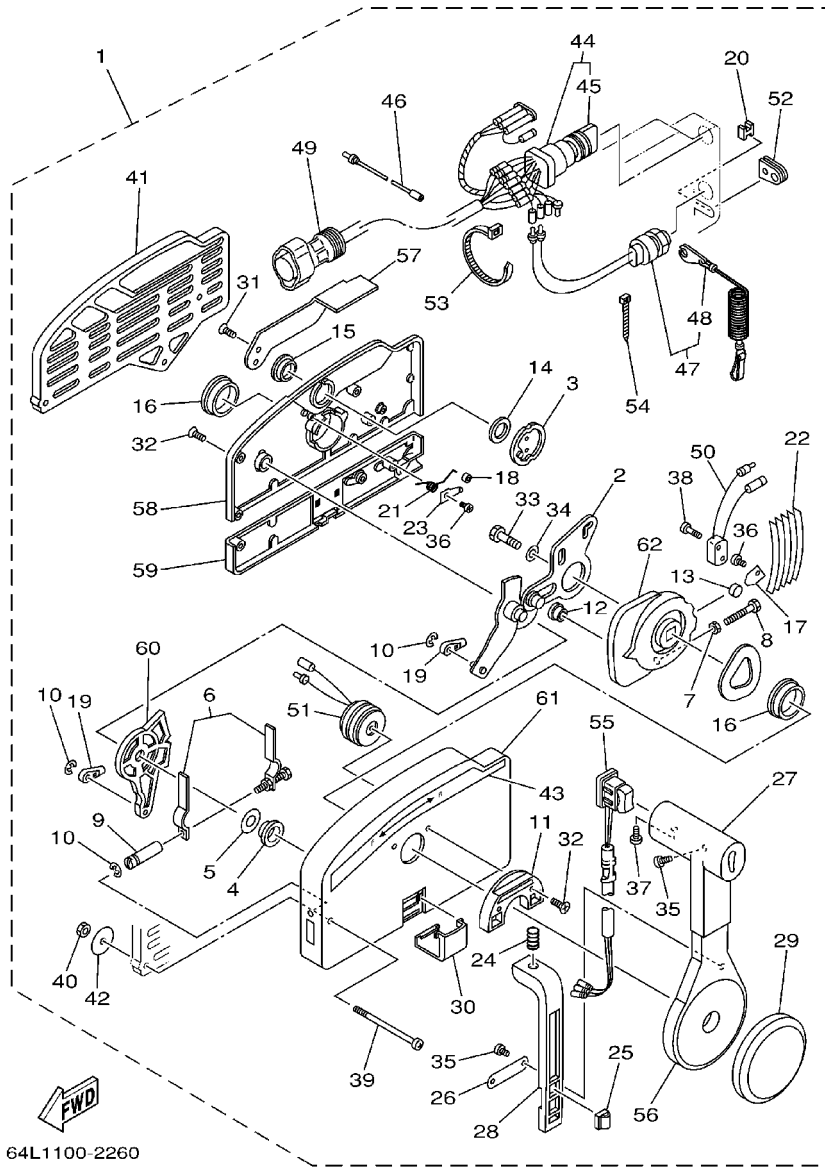


64L1100-2260

REF. NO.	PART NO. NO. PIECES	DESCRIPTION DESCRIPTION	69A1			REMARKS REMARQUES
28	703-48223-00	.LOCK, NEUTRAL .VERROU, NEUTRAL	1			
29	703-48225-00	.COVER .COUVERCLE	1			
30	703-48219-00	.COVER, LEAD .COUVERCLE	1			
31	703-48281-00	.SCREW .VIS	2			
32	703-48282-00	.SCREW .VIS	7			
33	97380-08030	.BOLT .BOULON	1			
34	92990-08600	.WASHER, PLATE .RONDELLE, PLATE	1			
35	98580-04010	.SCREW, PAN HEAD .VIS, TETE TRONCONIQUE	3			
36	98580-04006	.SCREW, PAN HEAD .VIS, TETE TRONCONIQUE	2			
37	98580-05010	.SCREW, PAN HEAD .VIS, TETE TRONCONIQUE	1			
38	98580-03015	.SCREW, PAN HEAD .VIS, TETE TRONCONIQUE	2			
39	703-48291-10	.SCREW (M6) .VIS (M6)	3			
40	95380-06600	.NUT, HEXAGON .ECROU	3			
41	703-48293-10	.SPACER, REMOTE CONTROL .ENTRETOISE	1			SINGLE
42	701-48287-00	.WASHER .RONDELLE	3			
43	703-48215-00	.GRAPHIC .ADHESIF	1			
44	703-82510-43	.MAIN SWITCH ASSY .CONTACTEUR A CLEF COMPLET	1			
45	703-82577-00	.CAP, KEY .CABOCHON	1			
46	703-82531-00	.WIRE, LEAD .FIL	1			
47	688-82575-01	.ENGINE STOP SWITCH ASSY .COUPE CIRCUIT CPLT	1			
48	682-82556-00	.STOPPER .PLAQUETTE	1			
49	688-8258A-20	.EXTENSION, WIRE HARNESS .EXTENSION, FAISCEAU DE FILS	1			L:5M (10P)
50	703-82540-00	.NEUTRAL SWITCH ASSY .CONTACTEUR DE POINT-MORT	1			
51	703-83383-02	.BUZZER .RONFLEUR	1			
52	703-48284-00	.GROMMET .PASSE-FIL	1			
53	703-82591-00	.BAND .COLLIER	1			
54	703-82592-00	.BAND .COLLIER	1			

FIG. 27 REMOTE CONTROL ASSY

BOITIER DE COMMANDE A DISTANCE

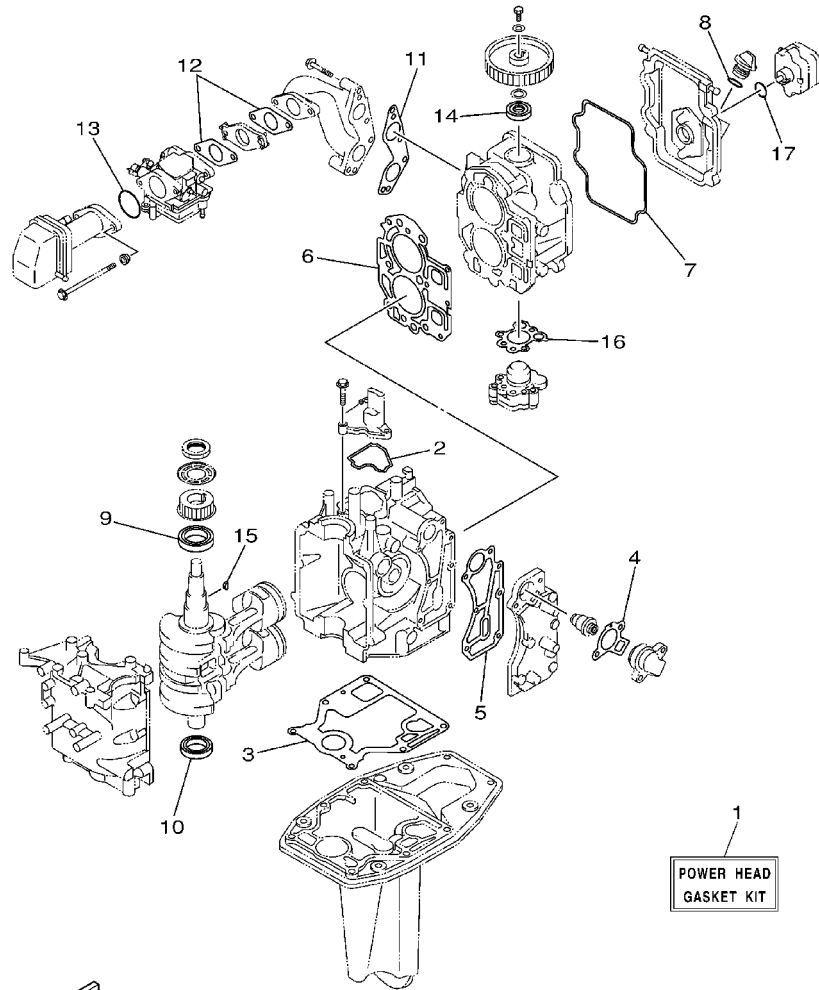


64L1100-2260

REF. NO.	PART NO. NO. PIECES	DESCRIPTION DESCRIPTION	69A1	REMARKS REMARQUES
55	703-82563-02	.TRIM & TILT SWITCH ASSY .INCLINER ET PAYER COMMUTATEUR	1	
56	703-48221-00	.LEVER, CONTROL .LEVIER, COMMANDE	1	
57	703-48152-00	.KNOB, FREE ACCEL. .BOUTON	1	
58	703-48212-00	.BACK PLATE 1 .PLAQUETTE 1	1	
59	703-48213-00	.BACK PLATE 2 .PLAQUETTE 2	1	
60	703-48271-00	.ARM, SHIFT .BRAS	1	
61	703-48211-01	.HOUSING,1 .CORPS	1	
62	703-48232-00	.GEAR .PIGNON	1	

FIG. 28 REPAIR KIT 1

KITS DE REPARATION 1

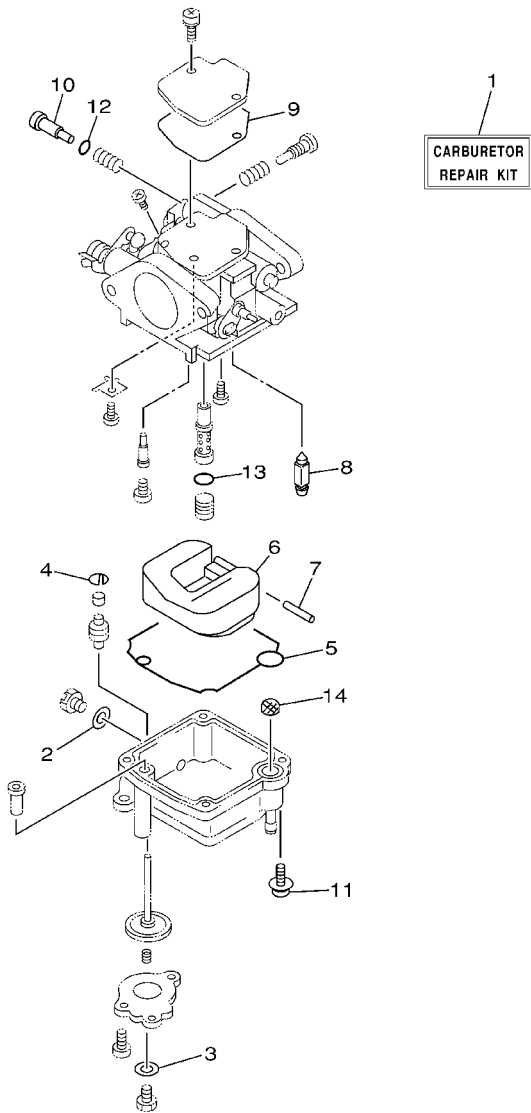


REF. NO.	PART NO. NO. PIECES	DESCRIPTION DESCRIPTION	69A1	REMARKS REMARQUES
1	66M-W0001-01	POWER HEAD GASKET KIT POCHETTE DE JINTS TETE MOTRICE	1	
2	66M-11357-00	.SEAL, CYLINDER 3 .JOINT, SPY CYLINDRE	1	
3	66M-11351-00	.GASKET, CYLINDER .JOINT, D'EMBASE	1	
4	62Y-12414-00	.GASKET, COVER .JOINT, COUVERCLE	1	
5	66M-41114-00	.GASKET, EXHAUST OUTER COVER .JOINT, COUVERCLE D'ECHAPPEMEN	1	
6	66M-11181-00	.GASKET, CYLINDER HEAD 1 .JOINT, DE CULASSE 1	1	
7	66M-11356-00	.SEAL, CYLINDER 2 .JOINT, SPY CYLINDRE	1	
8	93210-24M79	.O-RING .JOINT TORIQUE	1	
9	93102-35M51	.OIL SEAL .JOINT SPY	1	
10	93102-25M52	.OIL SEAL .JOINT SPY	1	
11	66M-13645-00	.GASKET, MANIFOLD 1 .JOINT, TUBULURE 1	1	
12	66M-13646-00	.GASKET, MANIFOLD 2 .JOINT, TUBULURE 2	2	
13	93210-35M86	.O-RING .JOINT TORIQUE	1	
14	93102-18M21	.OIL SEAL .JOINT SPY	1	
15	90280-03M01	KEY, WOODRUFF CLAVETTE, DEMI-LUNE	1	
16	66M-13329-10	.GASKET, PUMP COVER .JOINT, COUVERCLE DE POMPE	1	
17	93210-20M65	.O-RING .JOINT TORIQUE	1	

66M0100-1280

FIG. 29 REPAIR KIT 2

KITS DE REPARATION 2



REF. NO.	PART NO. NO. PIECES	DESCRIPTION DESCRIPTION	69A1	REMARKS REMARQUES
1	66M-W0093-01	CARBURETOR REPAIR KIT KIT DE REPARATION CARBURATEUR	1	
2	66M-14398-00	.GASKET .JOINT	1	
3	6L2-14398-00	.GASKET .JOINT	1	
4	66M-14377-00	.STOPPER .BUTEE	1	
5	66M-14384-00	.GASKET, FLOAT CHAMBER .JOINT, CUVE DE FLOTTEUR	1	
6	6L2-14385-00	.FLOAT .FLOTTEUR	1	
7	6E5-14386-01	.PIN, FLOAT .AXE, FLOTTEUR	1	
8	6L2-14392-00	.VALVE, NEEDLE .POINTEAU	1	
9	62Y-14399-00	.GASKET .JOINT	1	
10	5H0-14323-00	.SCREW, AIR ADJUSTING .VIS DE DOSEUR D'AIR	1	
11	97980-04112	.SCREW, WITH WASHER .VIS, AVEC RONDELLE	4	
12	62Y-14397-00	.O-RING .JOINT TORIQUE	1	
13	6F5-14397-00	.O-RING .JOINT TORIQUE	1	
14	66M-14827-00	.FILTER .FILTRE	1	

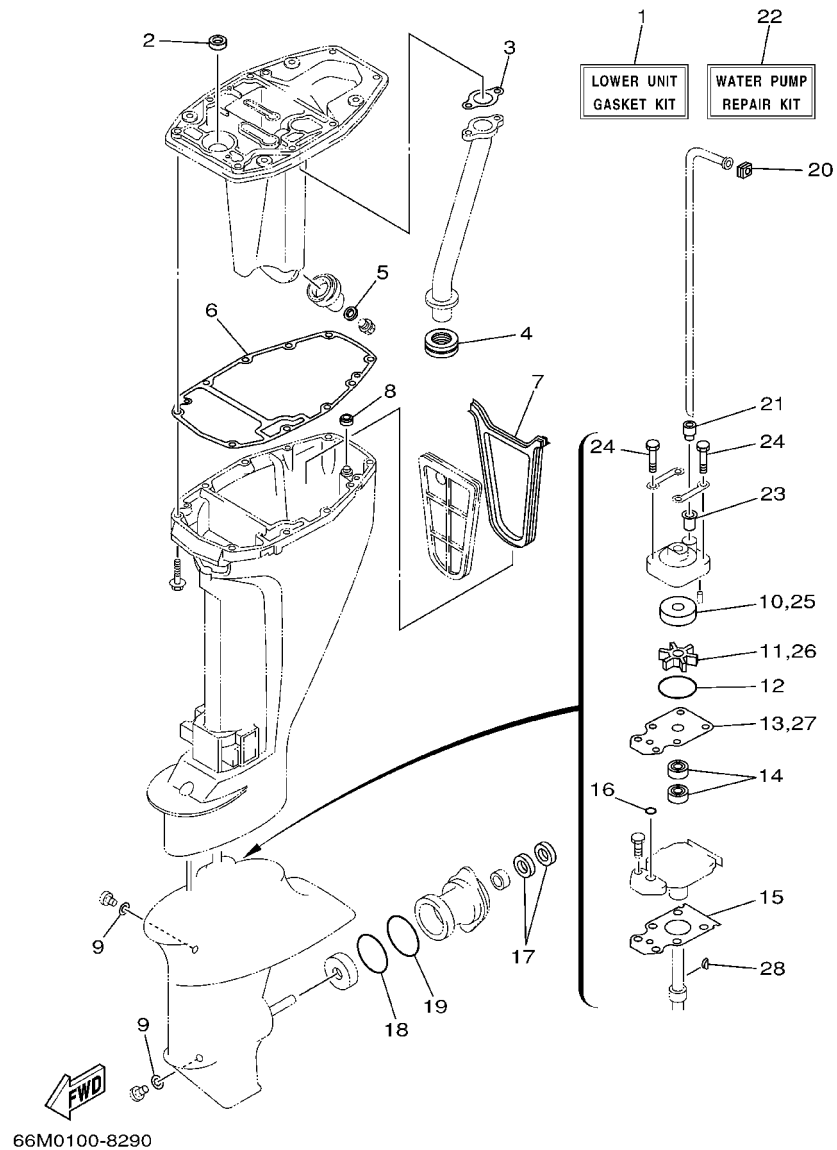


66M0100-8280

B1

FIG. 30 REPAIR KIT 3

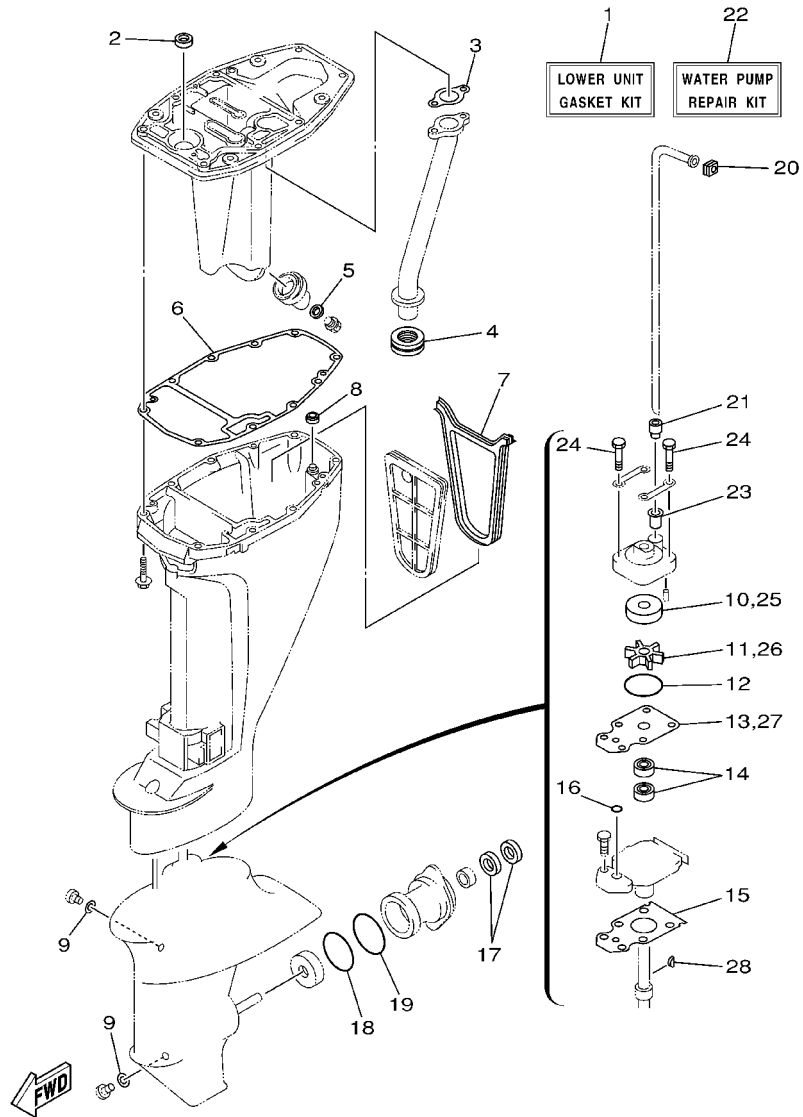
KITS DE PEPARATION 3



REF. NO.	PART NO. NO. PIECES	DESCRIPTION DESCRIPTION	69A1			REMARKS REMARQUES
1	66M-W0001-20	LOWER UNIT GASKET KIT POCHETTE DE JOINTS EMBASE	1			
2	93101-12M63	.OIL SEAL .JOINT SPY	1			
3	66M-41133-00	.GASKET, EXHAUST MANIFOLD 1 .JOINT, PIPE D'ECHAPPEMENT	1			
4	66M-41138-00	.SEAL, EXT. 1 .JOINT DE GROUPE 1	1			
5	90430-14M09	.GASKET .JOINT	1			
6	66M-45113-00	.GASKET, UPPER CASING .JOINT, TUBE D'ARBRE	1			
7	66M-45115-00	.GASKET, UPPER CASING .JOINT, TUBE D'ARBRE	1			
8	66M-45128-00	.SEAL 2 .JOINT 2	1			
9	90430-08020	.GASKET .JOINT	2			
10	63V-44322-00	.INSERT, CARTRIDGE .CUVETTE	1			
11	63V-44352-01	.IMPELLER .TURBINE	1			
12	93210-44398	.O-RING .JOINT TORIQUE	1			
13	63V-44323-00	.OUTER PLATE, CARTRIDGE .PLAQUE EXTERIEURE	1			
14	93101-20048	.OIL SEAL .JOINT SPY	2			
15	63V-45315-A0	.PACKING, LOWER CASING .JOINT, BOITIER D'HELICE	1			
16	93210-06ME6	.O-RING .JOINT TORIQUE	1			
17	93101-17054	.OIL SEAL .JOINT SPY	2			
18	93210-57M09	.O-RING .JOINT TORIQUE	1			
19	93210-56M80	.O-RING .JOINT TORIQUE	1			
20	63V-44365-10	.DAMPER, WATER SEAL .JOINT, TUBE D'EAU	1			
21	63V-44368-00	.RUBBER, WATER SEAL 4 .CAOUTCHOUC EAU JUNTA 4	1			
22	63V-W0078-00	WATER PUMP REPAIR KIT KIT DE REPARATION DE LA POMPE	1			
23	647-44366-00	.DAMPER, WATER SEAL .JOINT, TUBE D'EAU	1			
24	97080-08045	.BOLT .BOULON	4			
25	63V-44322-00	.INSERT, CARTRIDGE .CUVETTE	1			
26	63V-44352-01	.IMPELLER .TURBINE	1			
27	63V-44323-00	.OUTER PLATE, CARTRIDGE .PLAQUE EXTERIEURE	1			

FIG. 30 REPAIR KIT 3

KITS DE PEPARATION 3



66M0100-8290

REF. NO.	PART NO. NO. PIECES	DESCRIPTION DESCRIPTION	69A1		REMARKS REMARQUES
28	664-44338-00	.KEY, WOODRUFF .CLAVETTE, VOLANT	1		

NUMERICAL INDEX
INDEX NUMERIQUE

PART NO. NO. PIECES	REF. NO.	PART NO. NO. PIECES	REF. NO.	PART NO. NO. PIECES	REF. NO.	PART NO. NO. PIECES	REF. NO.	PART NO. NO. PIECES	REF. NO.	PART NO. NO. PIECES	REF. NO.
66M-W0001-01	28 - 1	66M-12138-60	4 - 15	66M-14377-00	7 - 8	6E5-24377-00	2 - 6	66M-42678-20	1 - 9	69G-43818-00	17 - 25
66M-W0001-20	30 - 1	66M-12146-00	5 - 8		29 - 4		2 - 17	69A-42710-11-4D	15 - 1	69A-4382G-00	19 - 32
66M-W0070-20	1 - 10	66M-12151-10	5 - 14	66M-14381-02	7 - 2	688-24378-00	2 - 30	66M-42716-00	15 - 8	69A-43824-00	19 - 43
63V-W0078-00	30 - 22	62Y-12158-00	5 - 16	62Y-14383-00	7 - 3	66M-24410-10	9 - 9	682-42724-00	15 - 24	69A-43830-00	19 - 24
66M-W009A-01-1S	4 - 1	62Y-12159-00	5 - 15	677-14383-01	7 - 5	66M-24411-10	9 - 12	6G1-42725-00	10 - 5	69A-4384F-00	19 - 29
66M-W009B-02-1S	2 - 1	66M-12171-10	8 - 2	66M-14384-00	7 - 14	66M-24413-01	9 - 10	66M-42725-20	15 - 11	6H1-4384G-11	19 - 37
66M-W0093-01	29 - 1	66M-12411-00	2 - 22		29 - 5	6A0-24421-01	9 - 11	65W-42726-10	15 - 25	69A-4384H-00	19 - 51
66M-11111-01-1S	4 - 2	6H3-12413-00-1S	2 - 23	6L2-14385-00	7 - 15	66M-24423-00	9 - 13	688-42726-10	15 - 30	69A-4384M-00	19 - 27
66M-11133-10	4 - 3	62Y-12414-00	2 - 24		29 - 6	66M-24444-00	9 - 16	62Y-42727-00	15 - 12	69A-43840-00-4D	19 - 1
66M-11168-00-1S	2 - 16		28 - 4	6E5-14386-01	7 - 16	66M-24454-00	9 - 15	682-42727-00	15 - 23	69A-43841-00	19 - 26
66M-11181-00	4 - 5	66M-12535-00	2 - 15		29 - 7	66M-24471-00	9 - 17	66M-42738-00-4D	15 - 9	6H1-43844-10	19 - 38
	28 - 6	66M-13131-10	9 - 14	6L2-14392-00	7 - 17	6YL-24610-00	24 - 2	66M-42743-00	15 - 26	69A-43848-00	19 - 44
66M-11191-00-1S	4 - 9	66M-13300-10	8 - 15		29 - 8	6YL-24641-00	24 - 3	66M-42766-00	15 - 19	6T4-43853-00	19 - 35
66M-11325-00	2 - 8	66M-13329-10	8 - 16	6F5-14397-00	7 - 32	65W-26326-10	15 - 22	66M-42815-00-4D	15 - 13	69A-43854-00	19 - 47
66M-11327-00-94	2 - 9		28 - 16		29 - 13	62Y-28100-00	9 - 29	6L2-42816-00	15 - 17	69A-43855-00	19 - 39
66M-11328-00	2 - 10	66M-13416-00	21 - 14	62Y-14397-00	7 - 29	6A1-28176-00	15 - 32	69A-43111-00-4D	17 - 1	6H1-43856-10	19 - 40
66M-11351-00	2 - 21	66M-13417-00	21 - 13		29 - 12	66M-41113-02-1S	2 - 25	69A-43112-00-4D	17 - 6	69A-43857-00	19 - 17
	28 - 3	66M-13421-00	21 - 12	6L2-14398-00	7 - 6	66M-41114-00	2 - 27	69A-43113-00	17 - 20	65W-4386A-00	19 - 15
66M-11355-00	21 - 4	67F-13434-02	1 - 14		29 - 3		28 - 5	648-43114-01	17 - 5	69A-4386A-00	19 - 42
66M-11356-00	4 - 10	6G8-13437-63	10 - 16	66M-14398-00	7 - 4	66M-41131-01-94	21 - 7		17 - 10	65W-4386K-00	19 - 62
	28 - 7	5GH-13440-00	2 - 33		29 - 2	66M-41133-00	21 - 8	6E7-43116-00	17 - 4	N35-43862-10	19 - 55
66M-11357-00	2 - 18	6G8-13444-51	15 - 34	62Y-14399-00	7 - 20		30 - 3		17 - 9	6H1-43866-00	19 - 20
	28 - 2	66M-13641-00-94	6 - 1		29 - 9	66M-41137-00-5B	21 - 1	6E0-43118-01	17 - 2	65W-43869-00	19 - 61
676-11372-00	2 - 26	66M-13645-00	6 - 2	66M-14427-60	10 - 15	66M-41138-00	21 - 11		17 - 7	69A-43869-00	19 - 23
66M-11411-00	3 - 3		28 - 11	66M-14440-00	6 - 8		30 - 4	69A-43131-00	17 - 18	69A-43871-00	19 - 21
66M-11416-00	3 - 4	66M-13646-00	6 - 6	66M-14477-00	6 - 12	66M-41211-00	16 - 31	6E5-43145-01	25 - 8	69A-43872-00	19 - 9
66M-11416-10	3 - 4		28 - 12	65W-14497-01	16 - 32	6R5-41237-00	6 - 23	6G5-43145-01	17 - 22		19 - 13
66M-11416-20	3 - 4	6L2-14157-00	7 - 19	66M-14827-00	7 - 34	66M-41252-00	6 - 18	69A-43155-00	17 - 44	69A-43878-00	19 - 57
66M-11536-10	8 - 7	66M-14157-00	7 - 9		29 - 14	66M-41256-00	6 - 24	65W-43191-00	17 - 12	65W-43879-00	19 - 69
66M-11537-00-94	8 - 3		7 - 36	66M-15100-01-1S	2 - 2	661-41262-02	16 - 29	65W-43192-00	17 - 11	6H1-4388E-11	19 - 5
66M-11557-00	8 - 8	646-14212-01	7 - 31	66M-15316-00	21 - 19	66M-41271-00	6 - 13	69A-43311-00-4D	17 - 16	65W-4388E-00	19 - 70
6G8-11575-00	21 - 16	66M-14225-00	7 - 13	66M-15362-00	21 - 20	689-41273-00	6 - 14	69A-43311-10-4D	17 - 16	69A-43880-00	19 - 58
66M-11603-00	3 - 9	66M-14239-00	7 - 12	6G8-15363-00	4 - 13	65W-41283-00	16 - 28	689-43373-01	18 - 3	69A-43881-00	19 - 64
66M-11604-00	3 - 9	66M-14271-00	6 - 7	66M-15373-00	6 - 25	66M-41292-00	6 - 15	69A-4380C-00	19 - 25	65W-43882-00	19 - 63
66M-11605-00	3 - 9	66M-14272-00	7 - 33	66M-15711-10	10 - 1	66M-41298-00	6 - 16	69A-4380D-00	19 - 11	6H1-43883-00	19 - 30
66M-11631-00-96	3 - 8	6G8-14275-02	7 - 11	66M-15758-10	10 - 4	65W-41638-00	16 - 27	65W-4380F-00	19 - 68		19 - 50
634-11633-00	3 - 10	66M-14301-00	7 - 1	66M-15762-00	10 - 11	6F5-41662-00	16 - 7	69A-4380K-00	19 - 2	65W-43887-00	19 - 65
66M-11635-00	3 - 8	62Y-14321-00	7 - 27	69A-22471-00	19 - 3	66M-42511-01-4D	18 - 6	69A-4380L-00	19 - 18	65W-43891-00	19 - 67
66M-11636-00	3 - 8	5H0-14323-00	7 - 25	69A-23129-00	19 - 56	66M-42511-11-4D	18 - 6	65W-43804-00	19 - 59	65W-43892-00	19 - 66
66M-11650-00	3 - 5		29 - 10	6YL-24201-02	24 - 1	63V-42528-00	18 - 2	65W-43805-00	19 - 60	62Y-43894-00	19 - 28
66M-11654-00	3 - 6	6E7-14325-00	9 - 18	65W-24251-00	9 - 5	63V-42537-00	18 - 7	6T4-43808-00	19 - 34	66R-44114-00	16 - 10
66M-12111-00	5 - 1	66M-14325-00	7 - 7	6YL-24260-01	24 - 4	69A-42610-10-4D	1 - 1	69A-4381G-00	19 - 48	65W-44116-00	16 - 9
66M-12113-00	5 - 4	30X-14334-00	7 - 26	6YL-24268-01	24 - 7	66M-42613-00	1 - 2	69A-43810-00	19 - 10	65W-44121-00	16 - 4
66M-12116-00	5 - 3	66M-14341-00	7 - 21	6G1-24304-02	9 - 1	66M-42615-00	1 - 8	69A-43811-00	19 - 19	66M-44122-00	16 - 5
30X-12117-00	5 - 5	66M-14342-23	7 - 23	6YL-24306-52	24 - 8	6E0-42651-02	1 - 4	69A-43812-00	19 - 22	65W-44125-00	16 - 18
30X-12118-00	5 - 6	66M-14343-52	7 - 22	6YL-24329-00	24 - 6	6E7-42652-00	1 - 6	69A-43814-00	19 - 7	65W-44142-00	16 - 16
51Y-12119-00	5 - 7	66M-14355-00	7 - 24	66M-24351-00	21 - 15	69A-42675-00	1 - 11	6H1-43816-00	19 - 36	66M-44143-00	16 - 12
66M-12121-00	5 - 2	66M-14368-01	7 - 10	66M-24374-00	9 - 20	66M-42677-00	1 - 12	69A-43816-00	19 - 54	66M-44143-10	16 - 12

NUMERICAL INDEX
INDEX NUMERIQUE

PART NO. NO. PIECES	REF. NO.	PART NO. NO. PIECES	REF. NO.	PART NO. NO. PIECES	REF. NO.	PART NO. NO. PIECES	REF. NO.	PART NO. NO. PIECES	REF. NO.	PART NO. NO. PIECES	REF. NO.
63V-44150-00	22 - 27	66M-45311-00-4D	22 - 2	703-48221-00	27 - 56	65W-81857-01	14 - 3	66M-85580-00	11 - 3	90201-06M31	16 - 33
66M-44150-10	22 - 27	63V-45315-A0	22 - 24	703-48222-00	27 - 27	6H5-81920-00	13 - 23	66M-86111-00	13 - 8	90201-06M94	8 - 6
66M-44192-00	16 - 23		30 - 15	703-48223-00	27 - 28	69A-81929-00	13 - 24	66M-86112-00	13 - 10	90201-06416	13 - 21
63V-44301-00	22 - 11	63V-45331-00-5B	22 - 21	703-48225-00	27 - 29	6G1-81941-10	13 - 1	66M-86116-00	13 - 9	90201-07M01	3 - 7
63V-44322-00	22 - 12	683-45361-02-4D	22 - 41	703-48226-00	27 - 26	69A-81950-00	13 - 18	66M-86117-00	13 - 16	90201-08M00	17 - 29
	30 - 10	66M-45371-00	23 - 20	703-48227-00	27 - 24	6G1-81952-00	13 - 2	90101-06020	17 - 40	90201-08M06	18 - 16
	30 - 25	63V-45375-00	23 - 14	703-48232-00	27 - 62	6G8-81960-A1	12 - 19	90105-06M07	18 - 4	90201-10M01	23 - 16
63V-44323-00	22 - 17	69A-45510-00	22 - 28	703-48234-00	27 - 18	66M-82105-00	13 - 5	90105-08M78	4 - 7	90201-10M20	25 - 2
	30 - 13	69A-45510-10	22 - 28	703-48235-00	27 - 4	66M-82117-00	13 - 3	90109-06MA2	13 - 22	90201-10M63	25 - 7
	30 - 27	63V-45536-00	22 - 4	703-48236-00	27 - 16	6G5-82119-00	13 - 27	90109-06M04	17 - 15	90201-13201	8 - 5
63V-44328-00	22 - 20	63V-45551-00	22 - 29	703-48238-00	27 - 22	63V-82127-00	17 - 41	90109-06M81	16 - 8	90201-16M44	11 - 14
664-44338-00	22 - 15	6E7-45560-01	22 - 31	703-48243-00	27 - 15	66M-82127-00	18 - 5	90109-06M82	15 - 10	90201-17682	22 - 34
	30 - 28	664-45567-01-10	22 - 8	703-48244-00	27 - 21	66M-82127-10	12 - 10	90109-06M86	13 - 32	90201-45M28	18 - 8
63V-44352-01	22 - 14	664-45567-01-12	22 - 8	703-48245-00	27 - 11	69A-82127-00	18 - 5		15 - 20	90202-05M38	1 - 13
	30 - 11	664-45567-01-15	22 - 8	703-48246-00	27 - 23	6G8-82150-00	12 - 22		15 - 27	90202-05088	6 - 22
	30 - 26	664-45567-01-18	22 - 8	701-48248-00	27 - 13	663-82151-00	12 - 23		16 - 11	90206-05005	6 - 20
66M-44361-00	23 - 1	664-45567-01-30	22 - 8	703-48252-00	27 - 12	6G5-82152-00	12 - 24	90109-08M78	14 - 12	90206-12052	15 - 16
66M-44361-10	23 - 1	664-45567-01-40	22 - 8	703-48261-01	27 - 2	6G8-82370-30	12 - 8	90109-08M85	14 - 13	90202-05M20	6 - 19
63V-44365-10	23 - 2	664-45567-01-50	22 - 8	703-48264-00	27 - 6	62Y-82377-00	15 - 31	90110-08M05	17 - 35	90243-04M01	17 - 3
	30 - 20	6E7-45571-00	22 - 32	703-48265-00	27 - 9	62Y-82504-10	12 - 9	90116-08M54	18 - 15		17 - 8
647-44366-00	22 - 13	626-45577-00-01	22 - 33	703-48268-00	27 - 5	703-82510-43	27 - 44	90119-06MA3	4 - 8	90249-12M36	17 - 31
	30 - 23	626-45577-00-03	22 - 33	703-48271-00	27 - 60	703-82531-00	27 - 46	90119-06MA4	2 - 28	90250-05010	22 - 38
66M-44366-00	18 - 19	626-45577-00-05	22 - 33	703-48281-00	27 - 31	703-82540-00	27 - 50	90119-06M14	2 - 5	90254-03M05	16 - 6
63V-44368-00	23 - 3	6E8-45587-10-13	22 - 6	703-48282-00	27 - 32	682-82556-00	27 - 48	90119-06M59	10 - 6		16 - 17
	30 - 21	6E8-45587-10-20	22 - 6	703-48284-00	27 - 52	63D-82563-10	13 - 29	90119-06M76	6 - 10	90266-04M04	1 - 5
6H3-44391-01	15 - 21	683-45611-00	22 - 35	701-48287-00	27 - 42	703-82563-02	27 - 55	90119-08M39	14 - 11		1 - 7
66M-44514-00-4D	18 - 12	682-45631-00	22 - 37	703-48291-10	27 - 39	6E3-8257H-00	15 - 33	90119-08M45	18 - 23	90280-03M01	8 - 10
66M-44526-00	18 - 18	648-45633-00	22 - 39	703-48293-10	27 - 41	688-82575-01	27 - 47	90119-08M46	18 - 24		28 - 15
66M-44551-00-4D	18 - 20	650-45635-00	22 - 36	701-48310-80	26 - 2	703-82577-00	27 - 45	90119-08M66	2 - 4	90280-05013	11 - 12
682-44555-30	18 - 21	683-45941-00-EL	23 - 19	701-48310-90	26 - 2	688-8258A-20	27 - 49	90152-05M04	23 - 9	90338-08M19	17 - 38
66M-44557-00	18 - 22	683-45943-00-EL	23 - 19	701-48320-00	26 - 2	6E5-82587-00	13 - 30	90157-05M16	24 - 5	90340-08002	22 - 9
66M-45111-00-4D	20 - 1	683-45945-00-EL	23 - 19	663-48344-00	16 - 2	69A-82590-00	13 - 28	90157-06M06	20 - 9	90340-14M06	21 - 17
66M-45111-10-4D	20 - 1	63V-45947-00-EL	23 - 19	703-48345-01	27 - 19	703-82591-00	27 - 53	90170-06015	16 - 13	90381-12M10	17 - 32
66M-45113-00	20 - 2	683-45952-00-EL	23 - 19	703-48358-00	27 - 20	703-82592-00	27 - 54	90170-09M03	25 - 4	90381-12M11	17 - 33
	30 - 6	6E7-45987-01	23 - 15	63V-48511-01	18 - 26	703-82594-00	27 - 25	90170-28M37	8 - 9	90381-14020	22 - 22
66M-45115-00	20 - 6	66M-46241-00	8 - 11	6H3-48538-00	16 - 1	703-83383-02	27 - 51	90171-10M01	23 - 17	90386-12MA2	15 - 15
	30 - 7	66M-46297-00	8 - 12	63V-61350-00	25 - 1	6H1-83557-00	12 - 26	90179-08M06	22 - 30	90386-12M37	15 - 14
66M-45126-00	20 - 5	703-48152-00	27 - 57	6E5-61355-00	25 - 6	69A-83614-00	13 - 31	90179-08M34	18 - 25	90386-14MA1	17 - 14
66M-45128-00	20 - 8	703-48153-00	27 - 3	66M-81800-01	14 - 1	6A1-83625-41	10 - 13	90179-16M05	11 - 13	90386-16MA7	17 - 26
	30 - 8	703-48189-00	27 - 17	65W-81801-00	14 - 8	6A1-83625-51	10 - 14	90185-05002	23 - 10	90386-16MA8	17 - 27
66M-45136-00	20 - 7	703-48198-00	27 - 14	65W-81807-00	14 - 5	66M-84342-00	10 - 12	90185-08057	17 - 36	90386-22MA4	17 - 19
6G1-45214-00	23 - 7	703-48205-17	26 - 1	65W-8182B-00	13 - 4	65W-85410-01	12 - 25		18 - 29	90386-30M60	18 - 11
63V-45215-00	23 - 8		27 - 1	65W-8182S-00	14 - 10	66M-85520-00	11 - 2	90185-09M01	25 - 3	90386-30048	18 - 9
61N-45251-01	23 - 11	703-48211-01	27 - 61	66M-81820-00	14 - 7	66M-85533-10	11 - 4	90185-22043	17 - 21	90387-06M03	13 - 20
65W-45251-00	17 - 39	703-48212-00	27 - 58	65W-81826-00	14 - 2	66M-85540-10	12 - 1	90201-05M06	16 - 24	90387-06M05	12 - 12
69A-45300-01-4D	22 - 1	703-48213-00	27 - 59	66M-81830-00	14 - 4	69A-85542-10	12 - 11	90201-06M05	10 - 9	90387-06M08	16 - 30
69A-45300-11-4D	22 - 1	703-48215-00	27 - 43	65W-81840-00	14 - 9	66M-85550-10	11 - 1		12 - 15	90387-06M29	16 - 19
63V-45311-01-4D	22 - 2	703-48219-00	27 - 30	65W-81850-01	14 - 6	66M-85570-00	12 - 4	90201-06M31	16 - 20	90387-06M52	15 - 7

NUMERICAL INDEX
INDEX NUMERIQUE

PART NO. NO. PIECES	REF. NO.	PART NO. NO. PIECES	REF. NO.	PART NO. NO. PIECES	REF. NO.	PART NO. NO. PIECES	REF. NO.	PART NO. NO. PIECES	REF. NO.	PART NO. NO. PIECES	REF. NO.
90387-06M79	6 - 11	91690-30018	17 - 13	93102-25M52	3 - 2	94701-00375	4 - 16	97380-05025	27 - 8		
90387-10M42	25 - 5	92990-05600	13 - 12		28 - 10	95380-05600	9 - 19	97380-08030	27 - 33		
90387-13M56	5 - 9	92990-06100	9 - 22	93102-35M51	3 - 1		27 - 7	97575-08545	20 - 3		
90387-13001	5 - 10	92990-06300	23 - 13		28 - 9	95380-06600	27 - 40	97780-50510	6 - 17		
90387-13002	5 - 11	92990-06600	9 - 23	93210-03261	13 - 17	95380-06700	10 - 10	97780-60520	1 - 3		
90387-16M02	17 - 28	92990-08600	13 - 7	93210-06ME6	22 - 25		16 - 14	97880-05008	13 - 11		
90401-20M00	2 - 34		17 - 37		30 - 16	95380-08600	18 - 17	97880-06030	9 - 21		
90430-08020	22 - 10		27 - 34	93210-06001	19 - 46	95380-08700	13 - 6	97885-08010	17 - 17		
	30 - 9	92995-05600	2 - 14	93210-07003	19 - 6	95895-06020	12 - 14	97890-04005	7 - 35		
90430-14M09	21 - 18	92995-06100	10 - 8	93210-12N52	19 - 33	95895-06030	23 - 12	97980-04110	7 - 18		
	30 - 5		11 - 6	93210-16275	25 - 9	97013-06016	8 - 4	97980-04112	7 - 28		
90445-09061	2 - 29	92995-06600	2 - 12	93210-20M65	9 - 24	97075-06025	18 - 13		29 - 11		
90445-09086	2 - 31		2 - 20		28 - 17	97075-08030	23 - 5	98580-03005	7 - 37		
90445-09105	2 - 32		4 - 12	93210-21276	19 - 8	97075-08035	18 - 27	98580-03015	27 - 38		
90445-10M20	9 - 6		6 - 4		19 - 12	97080-08016	17 - 30	98580-04006	27 - 36		
90445-10M40	9 - 4		8 - 18	93210-24M79	4 - 14	97080-08025	22 - 26	98580-04010	27 - 35		
90445-10M46	2 - 7		9 - 3		28 - 8	97080-08045	22 - 19	98580-05010	27 - 37		
90445-10M93	9 - 25		10 - 3	93210-27666	19 - 4		30 - 24	98980-04006	7 - 30		
90446-14MH7	17 - 23		11 - 7	93210-29M94	18 - 10	97095-05012	2 - 13	99001-03600	19 - 31		
90464-09M13	12 - 18		11 - 9	93210-35M86	6 - 9	97095-06010	16 - 36	99510-10114	2 - 3		
	15 - 29		11 - 11		28 - 13		17 - 42		4 - 6		
90464-09M31	9 - 28		12 - 3	93210-44398	22 - 16	97095-06012	13 - 25				
90465-06M86	9 - 27		12 - 7		30 - 12		15 - 18				
90465-06M88	13 - 33		12 - 17	93210-56M80	22 - 46	97095-06016	11 - 8				
90465-08M82	6 - 26		12 - 21		30 - 19		12 - 20				
90465-08M83	6 - 27		12 - 28	93210-57M09	22 - 45		12 - 27				
90465-11M10	9 - 8		13 - 14		30 - 18		13 - 13				
90465-13M97	17 - 24		13 - 26	93306-00501	22 - 42		21 - 9				
90465-25M95	15 - 28		15 - 3	93315-314V8	22 - 3		23 - 21				
90467-09M03	9 - 7		15 - 5	93315-317U2	22 - 43	97095-06020	2 - 11				
	9 - 26		16 - 22	93332-00005	22 - 7		2 - 19				
90468-10005	16 - 25		16 - 35	93341-41414	22 - 5		4 - 11				
90468-18008	16 - 3		17 - 43	93430-06024	27 - 10		9 - 2				
	16 - 15		18 - 14	93430-10M00	17 - 34		10 - 2				
	16 - 26		21 - 6	93450-09M01	4 - 4		12 - 2				
90480-09M12	13 - 19		21 - 10	93450-15023	3 - 11		12 - 6				
90480-10M13	13 - 15		22 - 48	93501-08001	19 - 41		21 - 5				
90480-10M16	8 - 13		23 - 22		19 - 49		22 - 47				
90480-12072	8 - 14	92995-08600	18 - 28	93505-32038	19 - 14	97095-06025	11 - 5				
90480-13M24	12 - 13		23 - 6	93602-15250	19 - 45		12 - 16				
90480-15M31	15 - 6	93101-12M63	21 - 2	93604-06136	19 - 16		15 - 4				
90480-25161	12 - 5		30 - 2	93604-12M07	22 - 18		16 - 21				
90501-12M40	5 - 12		22 - 44		23 - 4	97095-06035	8 - 17				
90501-12M41	5 - 13	93101-17054	30 - 17	93606-12019	6 - 5		15 - 2				
90501-14M06	22 - 40	93101-20048	22 - 23		20 - 4	97095-06040	6 - 3				
91317-05025	19 - 53		30 - 14		21 - 3		11 - 10				
91490-30020	23 - 18	93102-18M21	8 - 1	93606-14081	19 - 52	97095-06055	16 - 34				
91690-20016	6 - 21		28 - 14	93700-06M03	18 - 1	97095-06090	10 - 7				

F15AEP
PARTS CATALOGUE
E2001 by Yamaha Motor Co., Ltd.
1st Edition, Nov. 2001
All rights reserved.
Any reprinting or unauthorized use
without the written permission of
Yamaha Motor Co., Ltd.
is expressly prohibited.

F15AEP
CATALOGUE DE PIECES DETACHEES
E2001 Yamaha Motor Co., Ltd.
1ère Edition, Nov. 2001
Tous droits réservés.
Toute réimpression ou utilisation
sans la permission écrite de la
Yamaha Motor Co., Ltd.
est formellement interdite.