

PARTS CATALOGUE

DUAL STATION SYSTEM_(6X10)

YAMAHA
GENUINE
Parts & Accessories

1A6X1-110E1

FOREWORD

This Parts Catalogue is related to the parts for the model(s) in the below frame. When you are ordering replacement parts, please refer to this Parts Catalogue and quote both part numbers and part names correctly.

DUAL STATION SYSTEM(6X10)

1. Modifications or additions which have been made after issue of the Parts Catalogue will be announced in the Yamaha Parts News.
It is advisable that you make necessary corrections to the Parts Catalogue according to the Yamaha Parts News.

2. Abbreviations

The Following abbreviations are used in this Parts Catalogue.

“UR” Use specified parts number.

“UN” Use as many as needed.

“AP” Alternate Parts

“LM” Local Made

(Parts need to be ordered locally)

“O/S” Over Size

3. Parts, which are to be supplied in an assembly, are listed with a dot(.) in front of the part name as shown below.

EXAMPLE

CARBURETOR ASSY

.JET, PILOT

.NOZZLE, MAIN

4. Number of component for assembly

The numeral appearing to the right of each component part indicates the quantity of parts for each assembly unit.

EXAMPLE

PART NO.	DESCRIPTION	Ⓜ	Ⓢ	Ⓛ		REMARKS
6E0-85500-70	C.D.I. MAGNETO ASSY	1				
6E0-85550-70	.ROTOR ASSY	1				
6E0-15723-00-94.	.PULLY, STARTER	1				

5. Quantity Column Information

NAME for Q'TY COLUMN	APPLICABLE MODEL
6X10	DUAL STATION SYSTEM

6. Note that the illustrations for reference in finding parts numbers, not to be used for assembling. When assembling, please use the applicable service manual.

7. The asterisk (*) before a reference number indicates modification items after the first edition.

CONTENTS

DUAL STATION KIT (SINGLE)	1
DUAL STATION KIT (TWIN)	2
REMOTE CONTROL ASSY1 (ACTUATER)	4
REMOTE CONTROL ASSY2 (JUNCTION)	6
REMOTE CONTROL ASSY 3	8
REMOTE CONTROL ASSY 4	11

INDEX

NUMERICAL INDEX	14
-----------------------	----

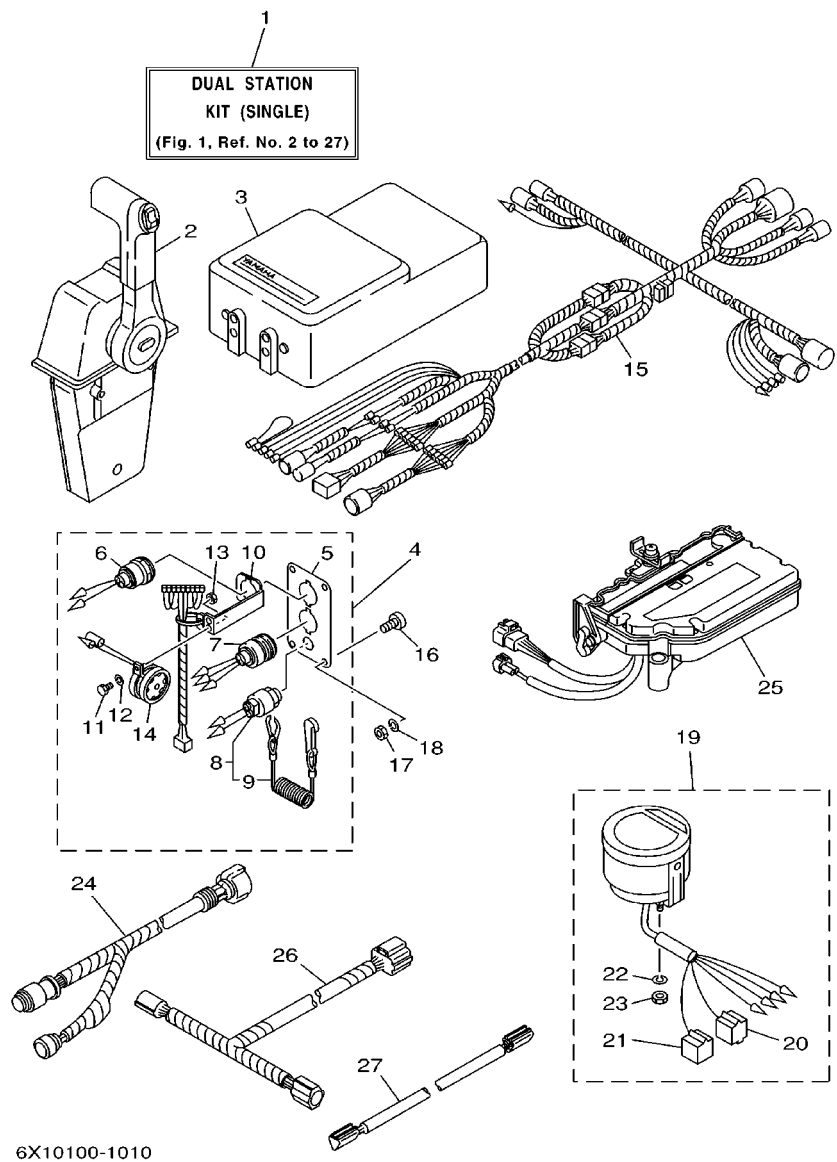
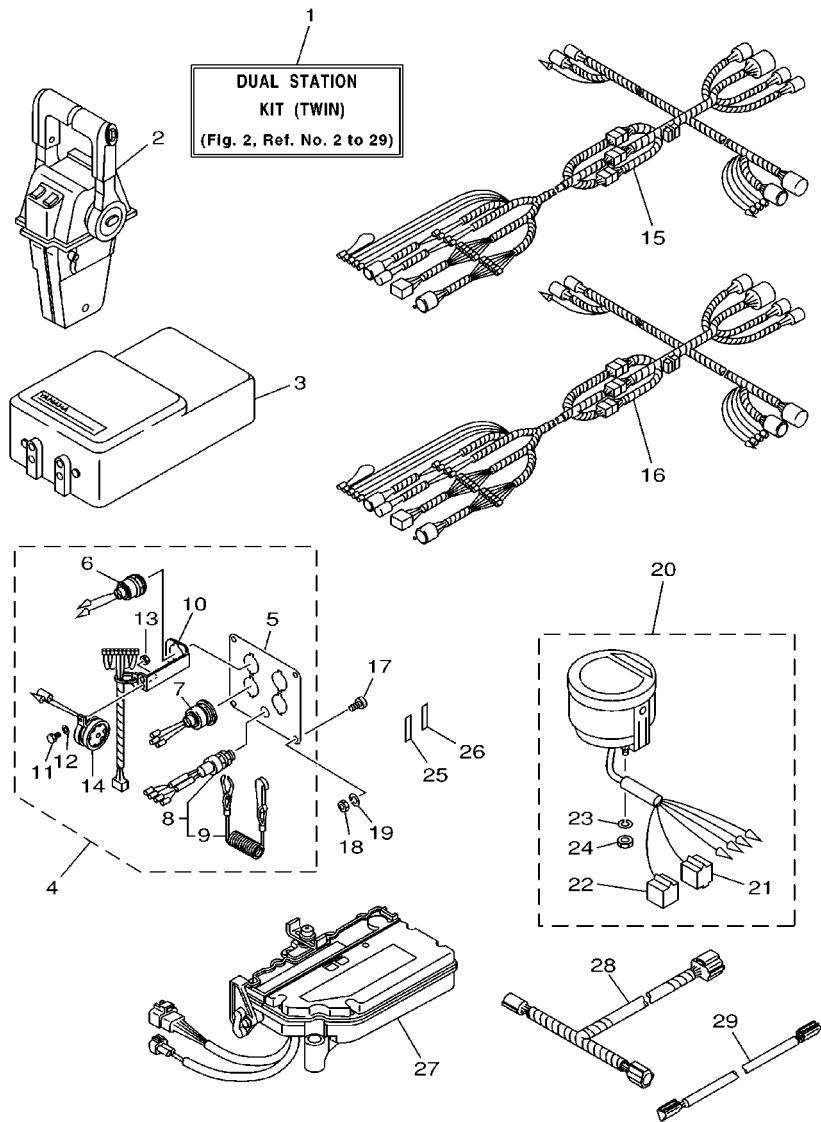


FIG. 1 DUAL STATION KIT (SINGLE)

REF. NO.	PART NO.	DESCRIPTION	6X10				REMARKS
1	6X1-W0006-06	DUAL STATION KIT (SINGLE)	1				
2	704-48205-14	REMOTE CONTROL ASSY	1				SEE FIG.5 WITH PT/T SW. SEE FIG.4
3	6X1-48208-02	JUNCTION BOX (DUAL STATION)	1				
4	6X1-82570-00	PANEL SWITCH ASSY	1				
5	6X1-82571-00	.PANEL, SWITCH	1				
6	6X1-81870-00	.STARTING SWITCH ASSY	1				
7	6X1-82550-00	.ENGINE STOP SWITCH ASSY	1				
8	688-82575-01	.ENGINE STOP SWITCH ASSY	1				
9	682-82556-00	..STOPPER	1				
10	6X1-82581-00	.STAY, CORD CLAMP	1				
11	97303-05012	.BOLT	1				
12	92903-05100	.WASHER, SPRING	1				
13	95303-05700	.NUT	1				
14	688-83383-11	.BUZZER	1				
15	6X1-8258A-20	EXTENSION, WIRE HARNESS	1				
16	90149-05M05	SCREW	4				
17	95380-05600	NUT	4				
18	92990-05100	WASHER, SPRING	4				
19	6Y5-8350T-80	DIGITAL TACHOMETER ASSY	1				
20	9E450-04433	.CONNECTOR	1				M-4-W
21	9E450-04533	.CONNECTOR	1				F-4-W
22	92990-04100	.WASHER, SPRING	2				
23	95380-04600	.NUT	2				
24	6K1-8258A-40	EXTENSION, WIRE HARNESS	1				
25	6X1-48208-20	ACTUATER (DUAL STATION)	1				SEE FIG.3
26	6X1-83553-00	WIRE, LEAD	1				
27	6X1-82531-00	WIRE, LEAD	1				

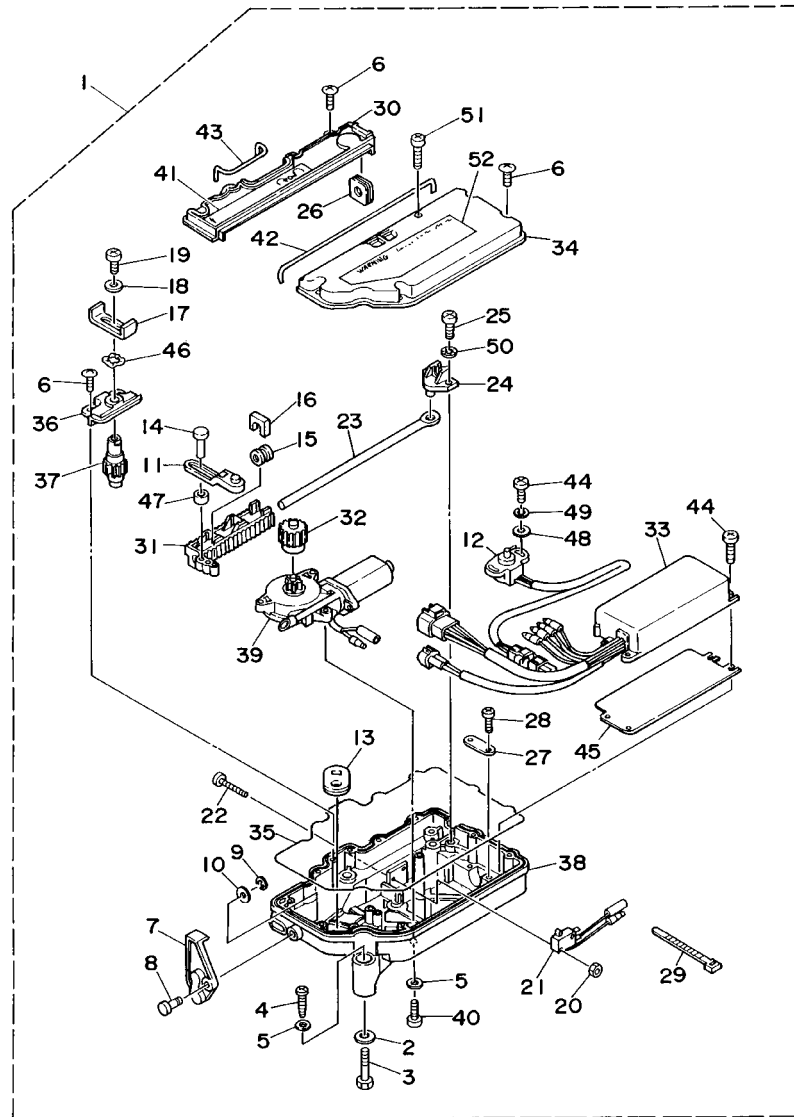


6X10100-1020

FIG. 2 DUAL STATION KIT (TWIN)

REF. NO.	PART NO.	DESCRIPTION	6X10				REMARKS
1	6X1-W0006-16	DUAL STATION KIT (TWIN)	1				
2	704-48207-23	REMOTE CONTROL ASSY	1				SEE FIG.6 WITH PT/T SW. SEE FIG.4
3	6X1-48208-02	JUNCTION BOX (DUAL STATION)	2				
4	6X1-82570-10	PANEL SWITCH ASSY	1				
5	6X1-82571-10	.PANEL, SWITCH	1				
6	6X1-81870-00	.STARTING SWITCH ASSY	2				
7	6X1-82550-00	.ENGINE STOP SWITCH ASSY	2				
8	6K1-82575-00	.ENGINE STOP SWITCH ASSY	1				
9	682-82556-00	..STOPPER	1				
10	6X1-82581-00	.STAY, CORD CLAMP	2				
11	97303-05012	.BOLT	2				
12	92903-05100	.WASHER, SPRING	2				
13	95303-05700	.NUT	2				
14	688-83383-11	.BUZZER	2				
15	6X1-8258A-20	EXTENSION, WIRE HARNESS	1				
16	6X1-8258A-30	EXTENSION, WIRE HARNESS	1				
17	90149-05M05	SCREW	4				
18	95380-05600	NUT	4				
19	92990-05100	WASHER, SPRING	4				
20	6Y5-8350T-80	DIGITAL TACHOMETER ASSY	2				
21	9E450-04433	.CONNECTOR	1				M-4-W
22	9E450-04533	.CONNECTOR	1				F-4-W
23	92990-04100	.WASHER, SPRING	2				
24	95380-04600	.NUT	2				
25	6X1-83621-00	MARK 1	1				
26	6X1-83622-00	MARK 2	1				
27	6X1-48208-20	ACTUATER (DUAL STATION)	2				SEE FIG.3

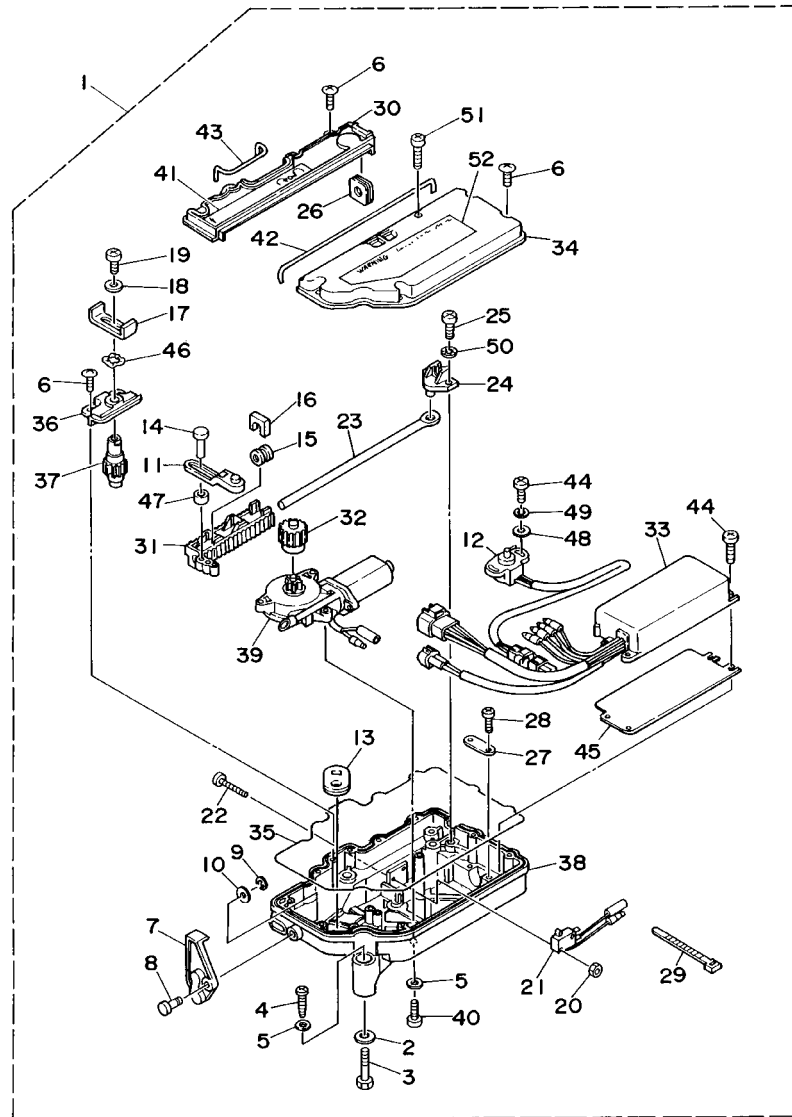
FIG. 3 REMOTE CONTROL ASSY1 (ACTUATOR)



6X10110-2030

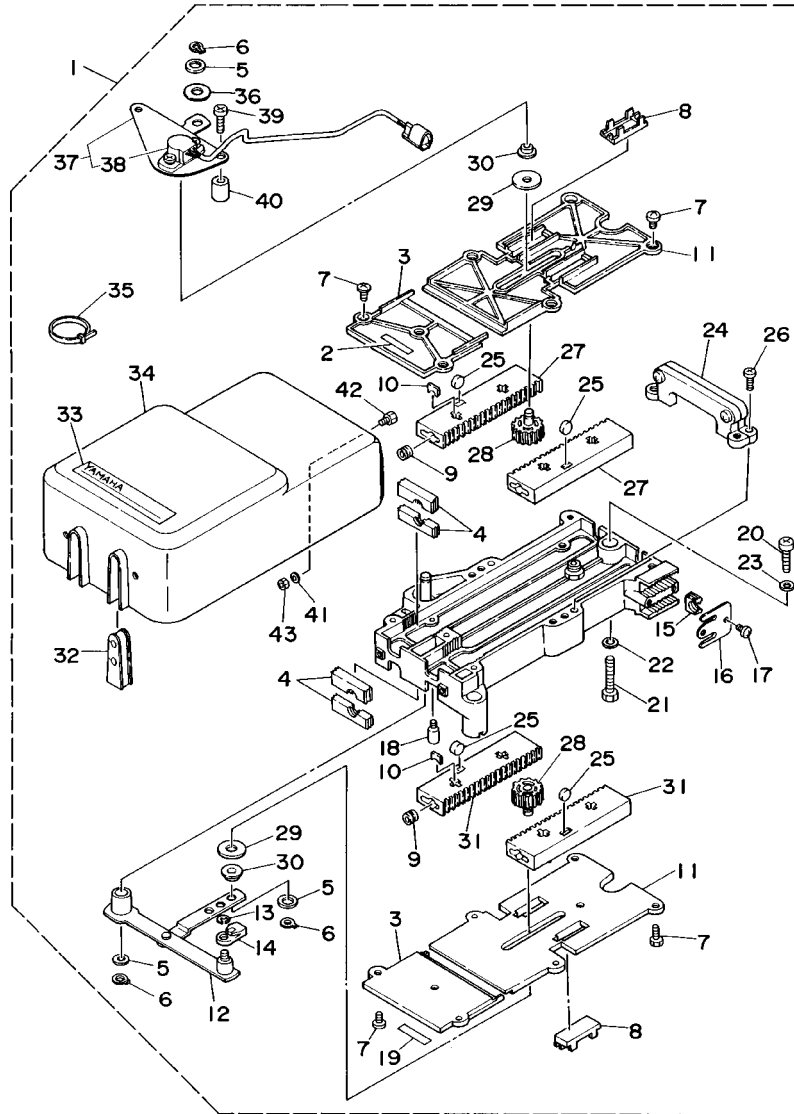
REF. NO.	PART NO.	DESCRIPTION	6X10				REMARKS
1	6X1-48208-20	ACTUATOR (DUAL STATION)	1				
2	92990-08600	.WASHER, PLATE	3				
3	6X1-48171-00	.BOLT (M8X1.25X40)	3				
4	6X0-48128-00	.SCREW (M6X30)	3				
5	702-48288-00	.WASHER, PLAIN	6				
6	6X1-48127-00	.SCREW (M5X12)	10				
7	6X1-48136-00	.LEVER, SHIFT	1				
8	6X1-48173-00	.PIN	1				
9	93430-06024	.CIRCLIP	1				
10	701-48246-00	.SPACER	1				
11	6X1-14573-00	.LEVER	1				
12	6X2-85885-10	.THROTTLE SENSOR ASSY	1				
13	6X1-48284-00	.GROMMET	1				
14	6X1-48174-00	.PIN	1				
15	6X1-48333-00	.CABLE END (#10-32UNF)	1				
16	6X1-48354-00	.SET-PLATE, CABLE	1				
17	6X1-48148-00	.LEVER, SHIFT 2	1				
18	704-48287-00	.WASHER	1				
19	6X1-48281-00	.SCREW (M5X0.8X12)	1				
20	95380-03600	.NUT	2				
21	703-82540-00	.NEUTRAL SWITCH ASSY	1				
22	6X1-48282-00	.SCREW (M3X0.5X20)	2				
23	6X1-48294-00	.SHAFT 1	1				
24	6X1-48178-00	.PLATE, SHIFT	1				
25	6X1-48282-A0	.SCREW (M6X1.0X25)	2				
26	6X1-48285-00	.GROMMET 2	1				
27	6X1-48143-00	.PLATE, STOPPER	1				

FIG. 3 REMOTE CONTROL ASSY1 (ACTUATOR)



6X10110-2030

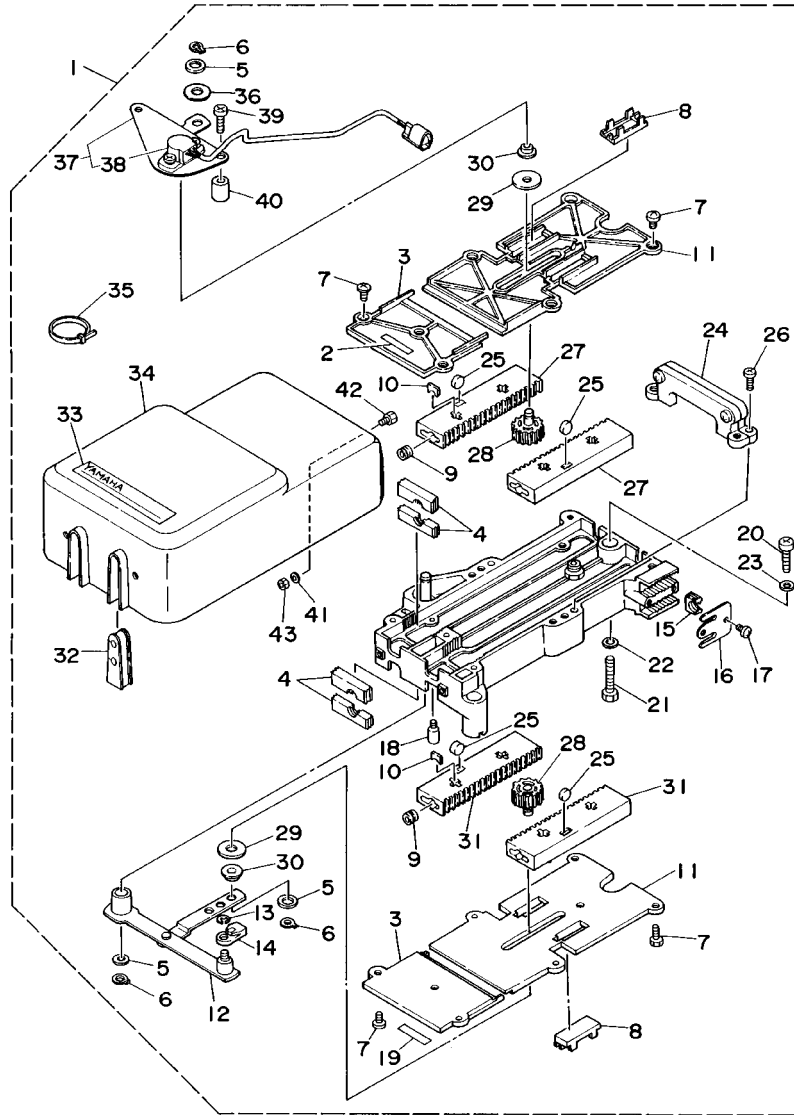
REF. NO.	PART NO.	DESCRIPTION	6X10				REMARKS
28	6X1-48289-00	.SCREW (M5X10)	2				
29	703-82591-00	.BAND	2				
30	6X1-48224-00	.COVER, CONTROL LEVER	1				
31	6X1-48232-A0	.GEAR	1				
32	6X1-48233-A0	.GEAR 2	1				
33	6X1-85590-20	.CONTROL UNIT ASSY	1				
34	6X1-48119-A0	.COVER	1				
35	6X1-48353-00	.BUSH, RUBBER	1				
36	6X1-48517-00	.CAP	1				
37	6X1-48122-00	.GEAR 2	1				
38	6X1-48211-A0	.HOUSING,1	1				
39	6X1-86210-00	.MOTOR ASSY	1				
40	6X1-48281-A0	.SCREW (M6X1.0X35)	3				
41	6X1-14488-00	.LABEL, CAUTION	1				
42	6X1-48353-10	.BUSH, RUBBER	1				
43	6X1-48353-20	.BUSH, RUBBER	1				
44	6X1-48129-00	.SCREW (M5X16)	6				
45	6X1-48213-00	.BACK PLATE 2	1				
46	6X1-48555-00	.WASHER, WAVE	1				
47	6X1-48246-00	.SPACER	1				
48	92990-05200	.WASHER, PLAIN	2				
49	92990-05100	.WASHER, SPRING	2				
50	92990-05300	.WASHER, INTERNAL TOOTH	2				
51	6X1-48128-00	.SCREW (M5X30)	1				
52	6X1-13437-00	.MARK, CAUTION	1				



6X10110-2040

FIG. 4 REMOTE CONTROL ASSY2 (JUNCTION)

REF. NO.	PART NO.	DESCRIPTION	6X10				REMARKS
1	6X1-48208-02	JUNCTION BOX (DUAL STATION)	2				
2	6X1-48125-00	.MARK	1				
3	6X1-48229-00	.COVER	2				
4	6X1-48331-00	.HOOK, CABLE	8				
5	6X1-48288-00	.WASHER, PLAIN	3				
6	EL8-48259-00	.CIRCLIP 1	5				
7	EL8-48127-00	.SCREW 1	14				
8	6X1-48138-00	.CAP, LOCK ARM	4				
9	6X1-48333-00	.CABLE END (#10-32UNF)	4				
10	6X1-48354-00	.SET-PLATE, CABLE	4				
11	6X1-48235-00	.COVER 1	2				
12	6X1-48261-00	.ARM, THROTTLE	1				
13	93430-06024	.CIRCLIP	3				
14	703-48345-01	.CABLE END,REMOTE CONTROL 2	1				
15	6X1-48361-00	.HOOK, CABLE	1				
16	6X1-48147-00	.PLATE	1				
17	98580-05010	.SCREW, PAN HEAD	2				
18	6X1-48163-00	.PIN 1	2				
19	6X1-48126-00	.GRAPHIC	1				
20	6X0-48128-00	.SCREW (M6X30)	3				
21	6X1-48171-00	.BOLT (M8X1.25X40)	3				
22	92990-08600	.WASHER, PLATE	3				
23	702-48288-00	.WASHER, PLAIN	3				
24	6X1-48274-01	.SHIFT HOUSING COMP.	1				
25	6X1-48236-00	.ROLLER, DETENT	4				
26	6X1-48281-00	.SCREW (M5X0.8X12)	4				
27	6X1-48232-00	.GEAR	2				

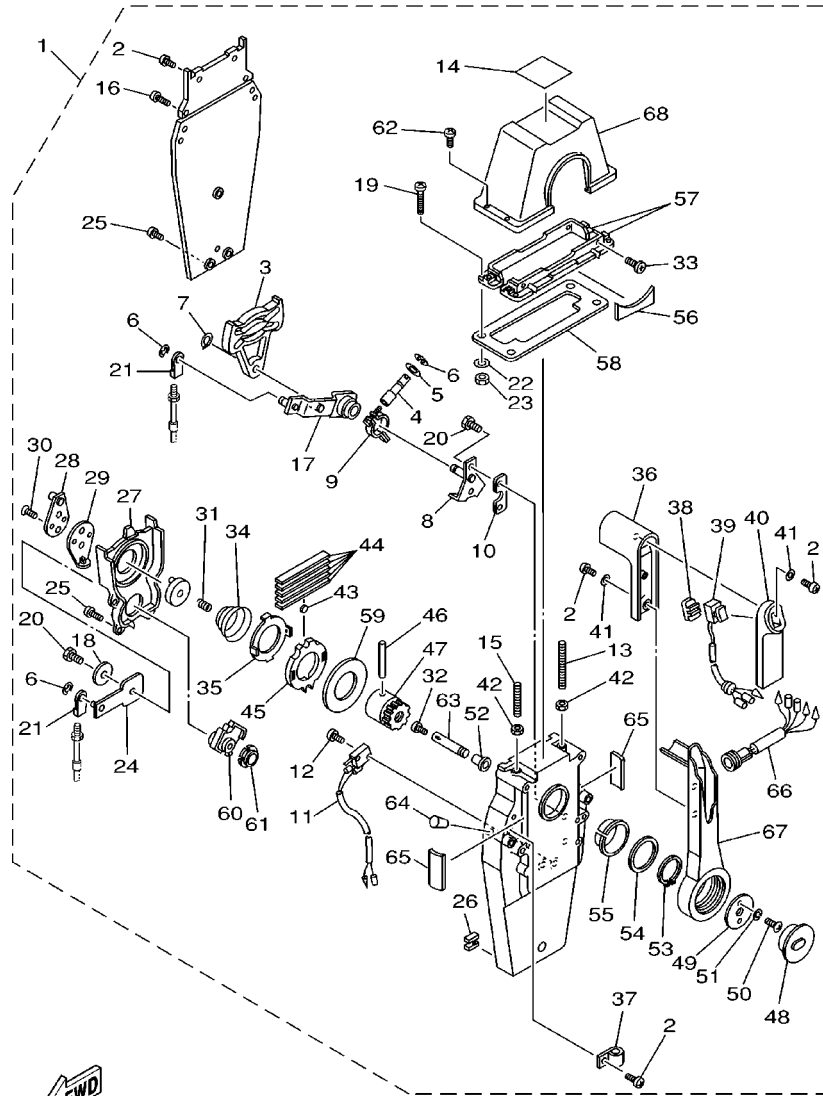


6X10110-2040

FIG. 4 REMOTE CONTROL ASSY2 (JUNCTION)

REF. NO.	PART NO.	DESCRIPTION	6X10				REMARKS
28	6X1-48233-00	.GEAR 2	2				
29	6X1-48287-00	.WASHER	2				
30	6X1-48234-00	.BUSHING 1	2				
31	6X1-48121-00	.GEAR 1	2				
32	6X1-48166-00	.PLUG	3				
33	6X1-48225-00	.GRAPHIC	1				
34	6X1-48119-00	.COVER	1				
35	703-82591-00	.BAND	1				
36	701-48266-00	.SPACER	1				
37	6X1-48271-02	.ARM, SHIFT	1				
38	6X2-85885-10	..THROTTLE SENSOR ASSY	1				
39	6X1-48283-00	.SCREW (M5X0.8X25)	2				
40	6X1-48293-00	.SPACER, REMOTE CONTROL	2				
41	92990-05200	.WASHER, PLAIN	3				
42	6X1-48165-00	.BUSHING	1				
43	95380-05600	.NUT	1				

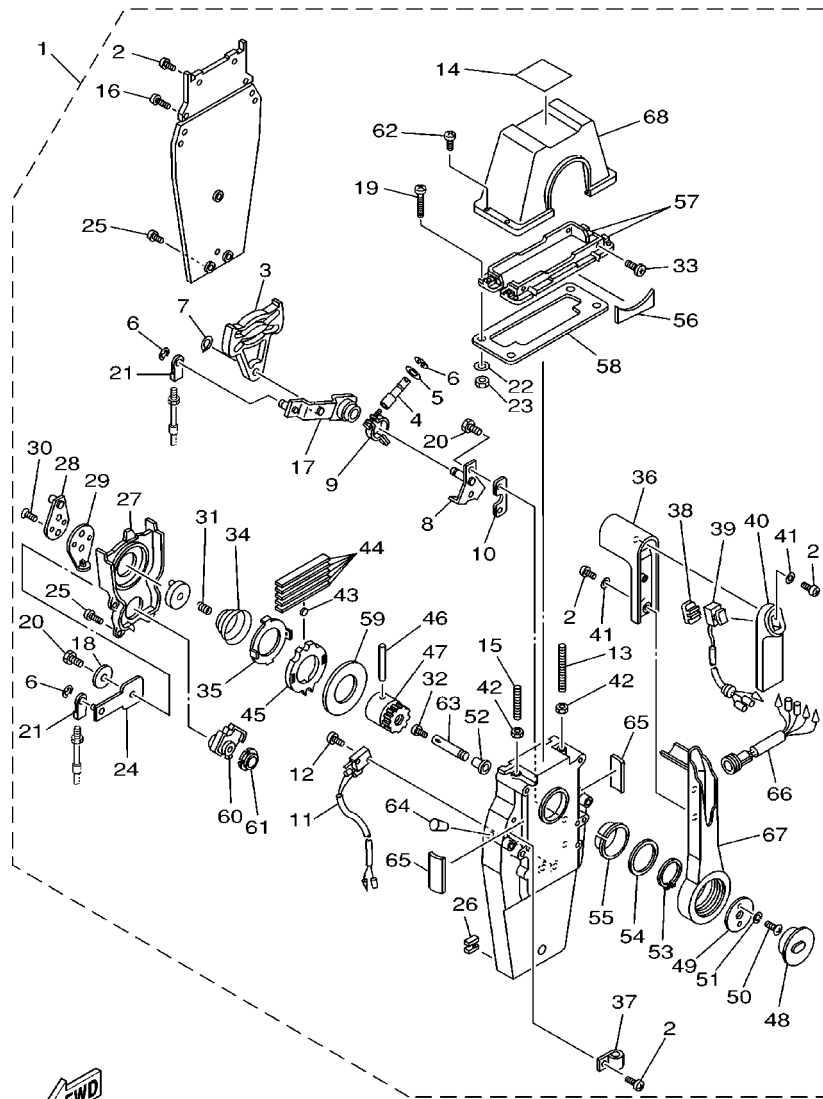
FIG. 5 REMOTE CONTROL ASSY 3



6X10100-1050

REF. NO.	PART NO.	DESCRIPTION	6X10				REMARKS
1	704-48205-14	REMOTE CONTROL ASSY	1				WITH PT/T SW.
2	97890-05016	.SCREW, PAN HEAD	6				
3	EL8-48251-00	.PLATE, CAM	1				
4	704-48265-00	.SHAFT, FRICTION	1				
5	701-48246-00	.SPACER	1				
6	93430-06024	.CIRCLIP	4				
7	EL8-48259-00	.CIRCLIP 1	1				
8	704-48262-00	.SHAFT, THROTTLE	1				
9	704-48264-00	.THROTTLE, FRICTION	1				
10	704-48266-00	.SPACER	1				
11	704-82540-00	.NEUTRAL SWITCH ASSY	1				
12	6A5-48129-10	.SCREW 3	2				
13	EL8-48281-00	.SCREW	1				
14	704-48215-00	.GRAPHIC	1				
15	704-48281-00	.SCREW	1				
16	97890-05025	.SCREW, PAN HEAD	2				
17	704-48261-00	.ARM, THROTTLE	1				
18	EL8-48191-00	.WASHER 1	1				
19	704-48283-00	.SCREW	4				
20	97380-06018	.BOLT	3				
21	703-48345-01	.CABLE END, REMOTE CONTROL 2	2				
22	704-48287-00	.WASHER	4				
23	95380-05600	.NUT	4				
24	EL8-48271-00	.ARM, SHIFT	1				
25	EL8-48127-00	.SCREW 1	9				
26	703-48358-00	.ANCHOR, CABLE	1				
27	EL8-48231-00	.HOUSING, GEAR	1				

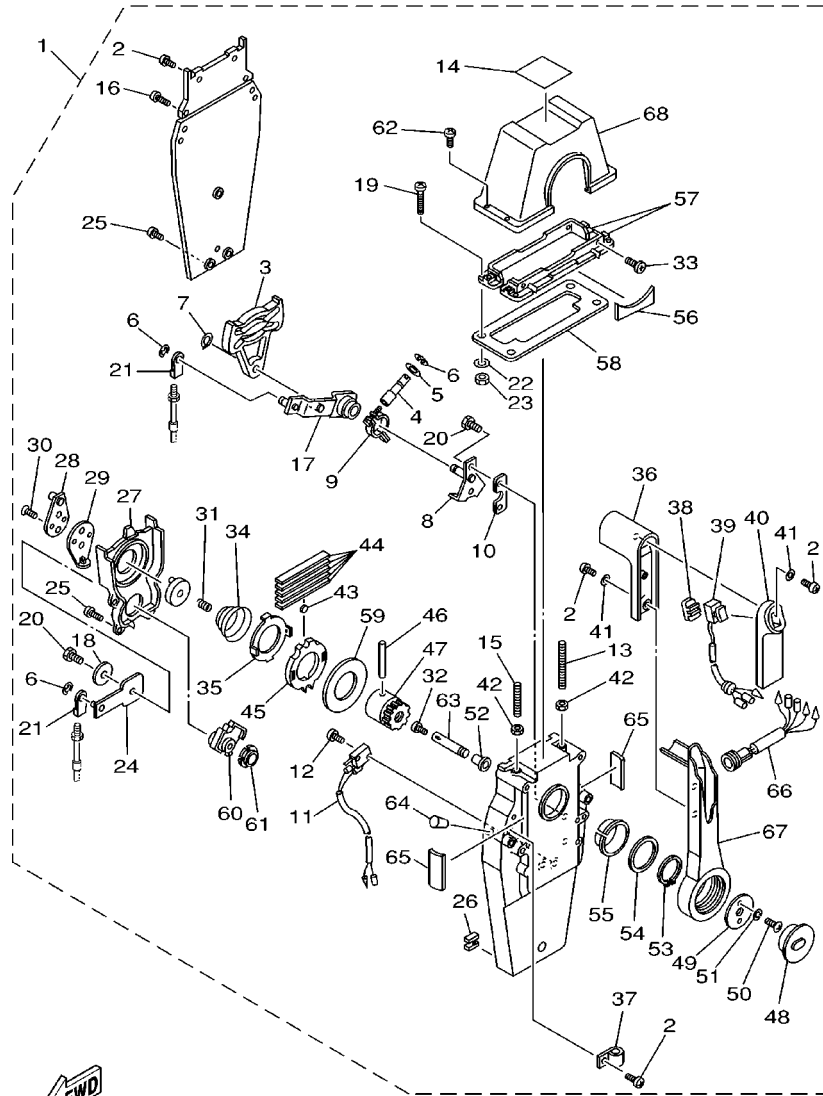
FIG. 5 REMOTE CONTROL ASSY 3



6X10100-1050

REF. NO.	PART NO.	DESCRIPTION	6X10				REMARKS
28	EL8-48241-00	.ARM, DRIVE	1				
29	EL8-48254-00	.STOPPER, THROTTLE ADJUSTING	1				
30	92780-06020	.SCREW, FLAT HEAD	2				
31	EL8-48158-00	.SPRING 1	1				
32	98580-04006	.SCREW, PAN HEAD	1				
33	98780-05018	.SCREW, FLAT HEAD	4				
34	EL8-48244-00	.SPRING, FREE ACCEL.	1				
35	EL8-48245-00	.PLATE, LOCK	1				
36	704-48222-00	.GRIP, CONTROL LEVER	1				
37	704-82594-00	.CLAMP	1				
38	704-48228-00	.HOLDER, SWITCH	1				
39	704-82563-01	.TRIM & TILT SWITCH ASSY	1				
40	704-48229-00	.GRIP, CONTROL LEVER	1				
41	92990-05300	.WASHER, INTERNAL TOOTH	3				
42	95380-06600	.NUT, HEXAGON	2				
43	701-48248-00	.ROLLER, FREE ACCEL.	1				
44	703-48238-00	.SPRING, DETENT	5				
45	EL8-48232-00	.GEAR 1	1				
46	EL8-48164-00	.PIN 2	1				
47	704-48242-00	.SHAFT, DRIVE	1				
48	704-48225-00	.COVER	1				
49	704-48192-00	.WASHER 2	1				
50	97890-06018	.SCREW, PAN HEAD	2				
51	92990-06300	.WASHER, INTERNAL TOOTH	2				
52	702-48263-00	.BUSHING	1				
53	EL8-48279-00	.CLIP 2	1				
54	704-48193-00	.WASHER 3	1				

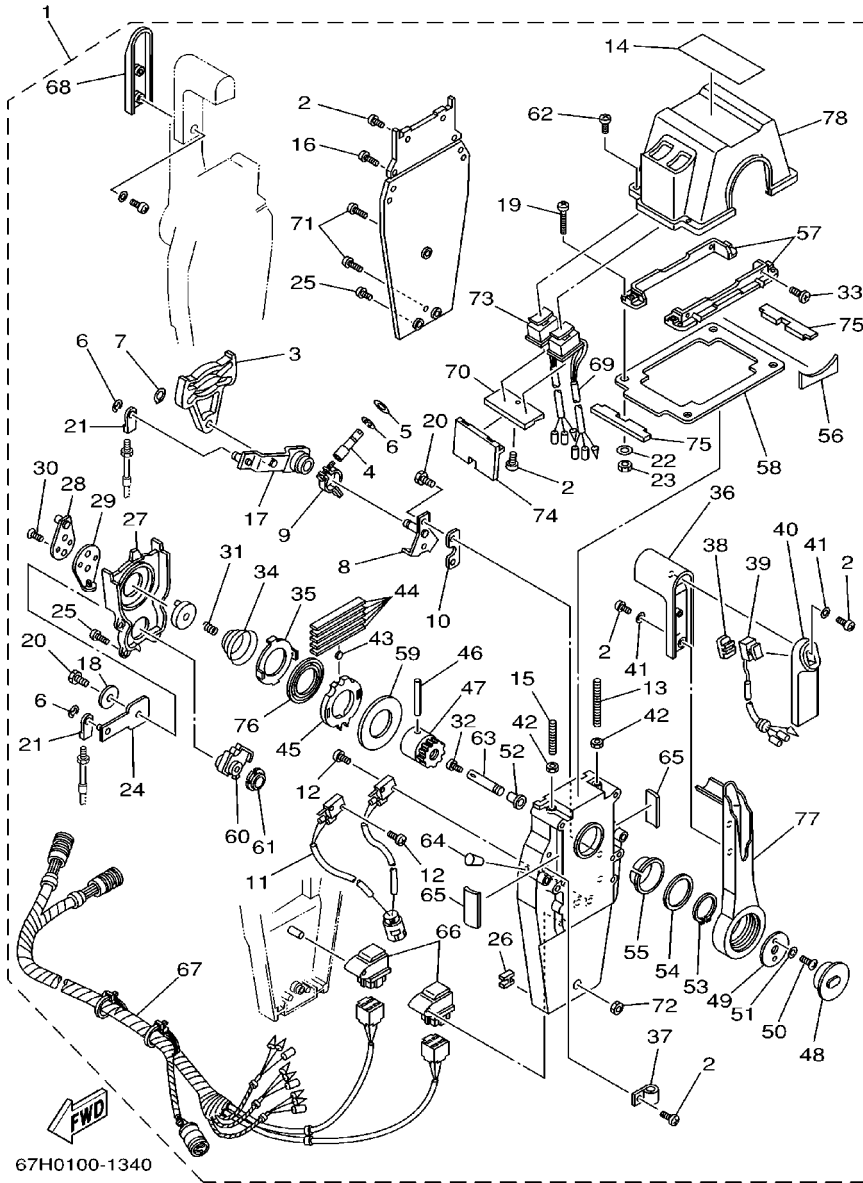
FIG. 5 REMOTE CONTROL ASSY 3



6X10100-1050

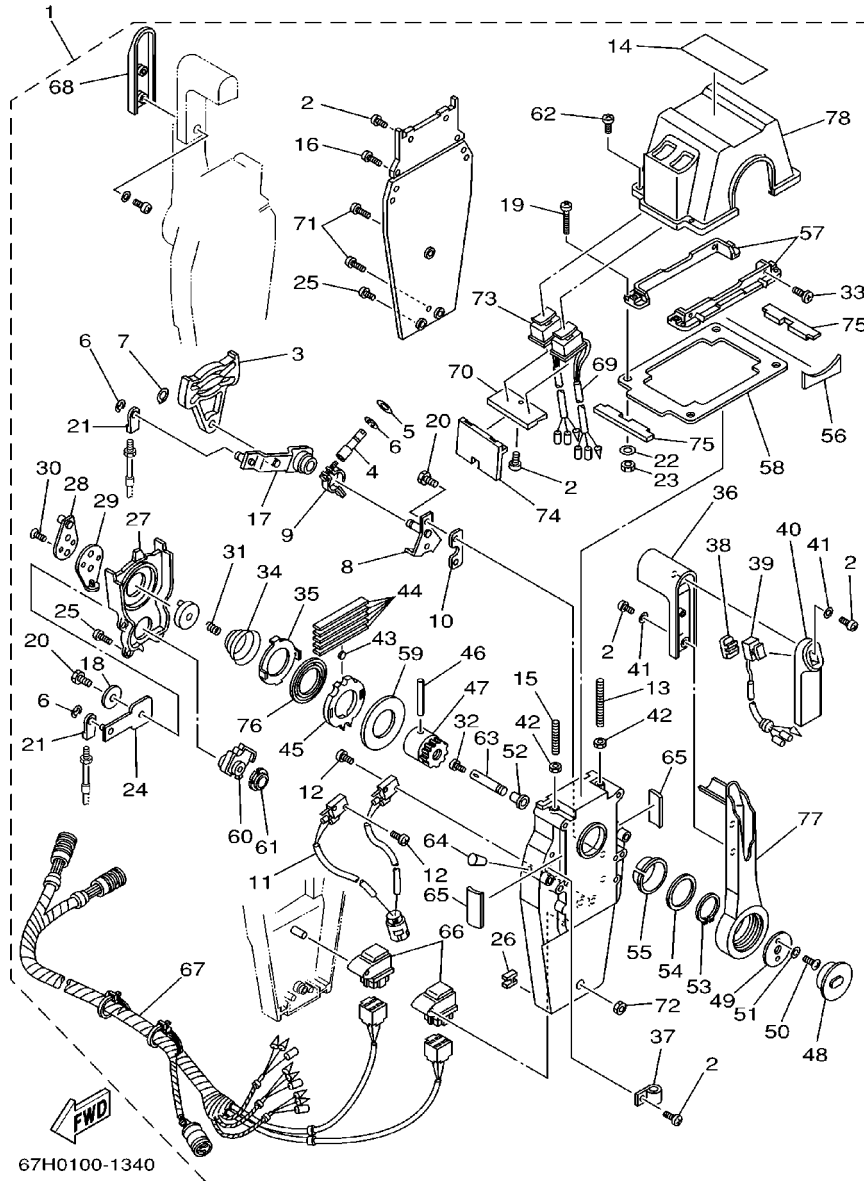
REF. NO.	PART NO.	DESCRIPTION	6X10				REMARKS
55	EL8-48234-00	.BUSHING 1	1				
56	704-48219-00	.COVER, LEAD	1				
57	704-48144-00	.PLATE, STOPPER 2	2				
58	704-48176-00	.GROMMET	1				
59	703-48192-00	.WASHER 2	1				
60	EL8-48233-00	.GEAR 2	1				
61	702-48235-00	.BUSHING	1				
62	704-48282-00	.SCREW	4				
63	EL8-48153-10	.SHAFT, FREE ACCEL.	1				
64	704-48166-00	.PLUG	1				
65	704-48284-00	.GROMMET	2				
66	704-82541-10	.WIRE, LEAD	1				
67	704-48221-00	.LEVER, CONTROL	1				
68	704-48119-00	.COVER	1				

FIG. 6 REMOTE CONTROL ASSY 4



67H0100-1340

REF. NO.	PART NO.	DESCRIPTION	6X10	REMARKS
1	704-48207-23	REMOTE CONTROL ASSY	1	WITH PT/T SW.
2	97890-05016	.SCREW, PAN HEAD	12	
3	EL8-48251-00	.PLATE, CAM	2	
4	704-48265-00	.SHAFT, FRICTION	2	
5	701-48246-00	.SPACER	2	
6	93430-06024	.CIRCLIP	8	
7	EL8-48259-00	.CIRCLIP 1	2	
8	704-48262-00	.SHAFT, THROTTLE	2	
9	704-48264-00	.THROTTLE, FRICTION	2	
10	704-48266-00	.SPACER	2	
11	704-82540-10	.NEUTRAL SWITCH ASSY	1	
12	6A5-48129-10	.SCREW 3	4	
13	EL8-48281-00	.SCREW	2	
14	704-48215-10	.GRAPHIC	1	
15	704-48281-00	.SCREW	2	
16	97890-05025	.SCREW, PAN HEAD	4	
17	704-48261-00	.ARM, THROTTLE	2	
18	EL8-48191-00	.WASHER 1	2	
19	704-48283-00	.SCREW	4	
20	97380-06018	.BOLT	6	
21	703-48345-01	.CABLE END, REMOTE CONTROL 2	4	
22	704-48287-00	.WASHER	4	
23	95380-05600	.NUT	4	
24	EL8-48271-00	.ARM, SHIFT	2	
25	EL8-48127-00	.SCREW 1	16	
26	703-48358-00	.ANCHOR, CABLE	2	
27	EL8-48231-00	.HOUSING, GEAR	2	



67H0100-1340

FIG. 6 REMOTE CONTROL ASSY 4

REF. NO.	PART NO.	DESCRIPTION	6X10				REMARKS
28	EL8-48241-00	.ARM, DRIVE	2				
29	EL8-48254-00	.STOPPER, THROTTLE ADJUSTING	2				
30	92780-06020	.SCREW, FLAT HEAD	4				
31	EL8-48158-00	.SPRING 1	2				
32	98580-04006	.SCREW, PAN HEAD	2				
33	98780-05018	.SCREW, FLAT HEAD	4				
34	EL8-48244-00	.SPRING, FREE ACCEL.	2				
35	EL8-48245-00	.PLATE, LOCK	2				
36	704-48222-00	.GRIP, CONTROL LEVER	2				
37	704-82594-00	.CLAMP	1				
38	704-48228-00	.HOLDER, SWITCH	1				
39	704-82563-31	.TRIM & TILT SWITCH ASSY	1				
40	704-48229-00	.GRIP, CONTROL LEVER	1				
41	92990-05300	.WASHER, INTERNAL TOOTH	6				
42	95380-06600	.NUT, HEXAGON	4				
43	701-48248-00	.ROLLER, FREE ACCEL.	2				
44	703-48238-00	.SPRING, DETENT	10				
45	EL8-48232-00	.GEAR 1	2				
46	EL8-48164-00	.PIN 2	2				
47	704-48242-00	.SHAFT, DRIVE	2				
48	704-48225-00	.COVER	2				
49	704-48192-00	.WASHER 2	2				
50	97890-06018	.SCREW, PAN HEAD	4				
51	92990-06300	.WASHER, INTERNAL TOOTH	4				
52	702-48263-00	.BUSHING	2				
53	EL8-48279-00	.CLIP 2	2				
54	704-48193-00	.WASHER 3	2				

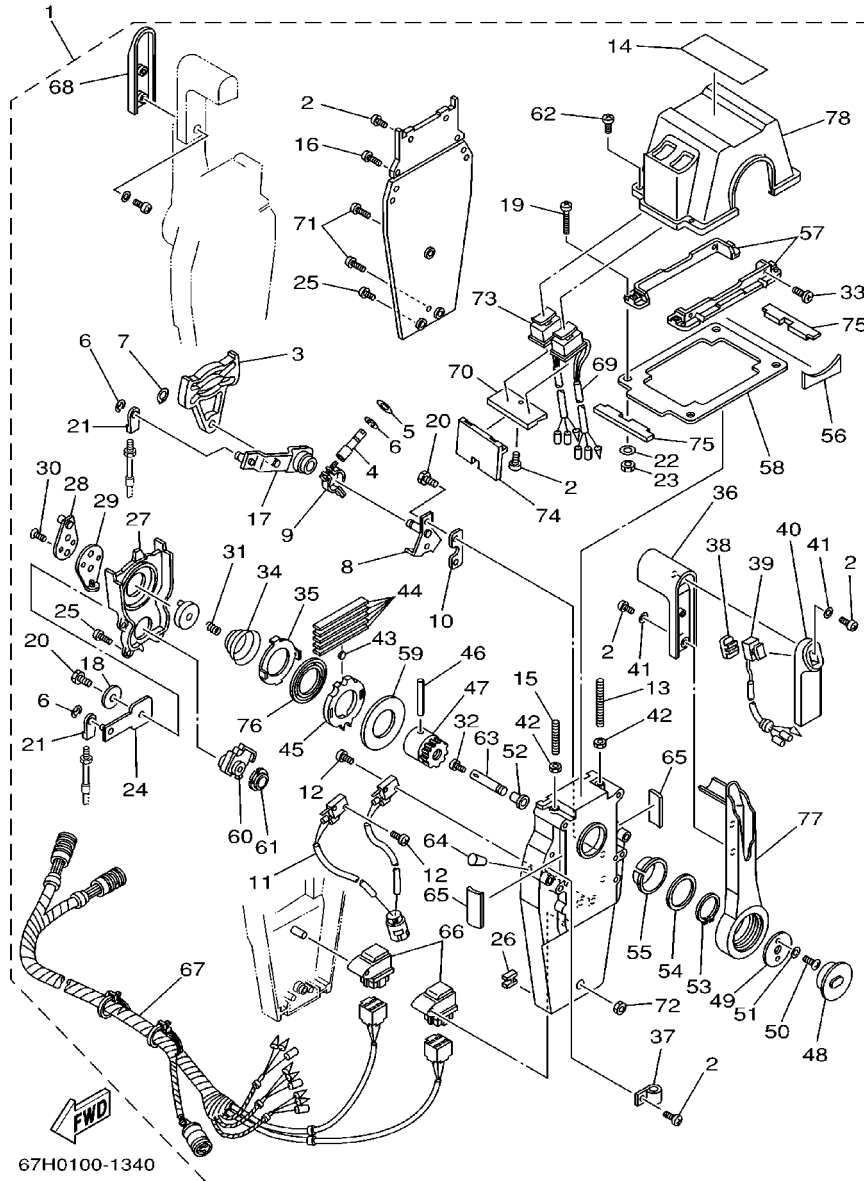


FIG. 6 REMOTE CONTROL ASSY 4

REF. NO.	PART NO.	DESCRIPTION	6X10				REMARKS
55	EL8-48234-00	.BUSHING 1	2				
56	704-48219-00	.COVER, LEAD	2				
57	704-48144-00	.PLATE, STOPPER 2	2				
58	704-48176-10	.GROMMET	1				
59	703-48192-00	.WASHER 2	2				
60	EL8-48233-00	.GEAR 2	2				
61	703-48235-00	.BUSHING	2				
62	704-48282-00	.SCREW	4				
63	EL8-48153-10	.SHAFT, FREE ACCEL.	2				
64	704-48166-00	.PLUG	2				
65	704-48284-00	.GROMMET	4				
66	704-81950-00	.RELAY ASSY	2				
67	704-82590-10	.WIRE HARNESS ASSY	1				
68	704-48229-10	.GRIP, CONTROL LEVER	1				
69	704-82563-E0	.TRIM & TILT SWITCH ASSY	1				
70	704-48228-10	.HOLDER, SWITCH	1				
71	704-48128-00	.SCREW 2	3				
72	704-48156-00	.NUT 1	1				
73	704-82563-F0	.TRIM & TILT SWITCH ASSY	1				
74	704-48285-00	.GROMMET 2	1				
75	704-48286-00	.GROMMET 3	2				
76	704-48178-00	.PLATE, SHIFT	2				
77	704-48221-00	.LEVER, CONTROL	2				
78	704-48119-20	.COVER	1				

NUMERICAL INDEX

PARTNO.	REF. NO.	PARTNO.	REF. NO.	PARTNO.	REF. NO.	PARTNO.	REF. NO.	PARTNO.	REF. NO.	PARTNO.	REF. NO.
6X1-W0006-06	1 - 1	704-48176-10	6 - 58	EL8-48233-00	5 - 60	EL8-48271-00	5 - 24	703-48358-00	6 - 26	6X2-85885-10	4 - 38
6X1-W0006-16	2 - 1	6X1-48178-00	3 - 24		6 - 60		6 - 24	6X1-48361-00	4 - 15	6X1-86210-00	3 - 39
6X1-13437-00	3 - 52	704-48178-00	6 - 76	6X1-48233-A0	3 - 32	6X1-48271-02	4 - 37	6X1-48517-00	3 - 36	9E450-04433	1 - 20
6X1-14488-00	3 - 41	EL8-48191-00	5 - 18	6X1-48233-00	4 - 28	6X1-48274-01	4 - 24	6X1-48555-00	3 - 46		2 - 21
6X1-14573-00	3 - 11		6 - 18	EL8-48234-00	5 - 55	EL8-48279-00	5 - 53	6X1-81870-00	1 - 6	9E450-04533	1 - 21
6X1-48119-A0	3 - 34	703-48192-00	5 - 59		6 - 55		6 - 53		2 - 6		2 - 22
6X1-48119-00	4 - 34		6 - 59	6X1-48234-00	4 - 30	EL8-48281-00	5 - 13	704-81950-00	6 - 66	90149-05M05	1 - 16
704-48119-00	5 - 68	704-48192-00	5 - 49	6X1-48235-00	4 - 11		6 - 13	6X1-82531-00	1 - 27		2 - 17
704-48119-20	6 - 78		6 - 49	702-48235-00	5 - 61	6X1-48281-A0	3 - 40		2 - 29	92780-06020	5 - 30
6X1-48121-00	4 - 31	704-48193-00	5 - 54	703-48235-00	6 - 61	6X1-48281-00	3 - 19	703-82540-00	3 - 21		6 - 30
6X1-48122-00	3 - 37		6 - 54	6X1-48236-00	4 - 25		4 - 26	704-82540-00	5 - 11	92903-05100	1 - 12
6X1-48125-00	4 - 2	704-48205-14	1 - 2	703-48238-00	5 - 44	704-48281-00	5 - 15	704-82540-10	6 - 11		2 - 12
6X1-48126-00	4 - 19		5 - 1		6 - 44		6 - 15	704-82541-10	5 - 66	92990-04100	1 - 22
EL8-48127-00	4 - 7	704-48207-23	2 - 2	EL8-48241-00	5 - 28	6X1-48282-A0	3 - 25	6X1-82550-00	1 - 7		2 - 23
	5 - 25		6 - 1		6 - 28	6X1-48282-00	3 - 22		2 - 7	92990-05100	1 - 18
	6 - 25	6X1-48208-02	1 - 3	704-48242-00	5 - 47	704-48282-00	5 - 62	682-82556-00	1 - 9		2 - 19
6X1-48127-00	3 - 6		2 - 3		6 - 47		6 - 62		2 - 9		3 - 49
6X0-48128-00	3 - 4		4 - 1	EL8-48244-00	5 - 34	6X1-48283-00	4 - 39	704-82563-E0	6 - 69	92990-05200	3 - 48
	4 - 20	6X1-48208-20	1 - 25		6 - 34	704-48283-00	5 - 19	704-82563-F0	6 - 73		4 - 41
6X1-48128-00	3 - 51		2 - 27	EL8-48245-00	5 - 35		6 - 19	704-82563-01	5 - 39	92990-05300	3 - 50
704-48128-00	6 - 71		3 - 1		6 - 35	6X1-48284-00	3 - 13	704-82563-31	6 - 39		5 - 41
6A5-48129-10	5 - 12	6X1-48211-A0	3 - 38	6X1-48246-00	3 - 47	704-48284-00	5 - 65	6X1-82570-00	1 - 4		6 - 41
	6 - 12	6X1-48213-00	3 - 45	701-48246-00	3 - 10		6 - 65	6X1-82570-10	2 - 4	92990-06300	5 - 51
6X1-48129-00	3 - 44	704-48215-00	5 - 14		5 - 5	6X1-48285-00	3 - 26	6X1-82571-00	1 - 5		6 - 51
6X1-48136-00	3 - 7	704-48215-10	6 - 14		6 - 5	704-48285-00	6 - 74	6X1-82571-10	2 - 5	92990-08600	3 - 2
6X1-48138-00	4 - 8	704-48219-00	5 - 56	701-48248-00	5 - 43	704-48286-00	6 - 75	6K1-82575-00	2 - 8		4 - 22
6X1-48143-00	3 - 27		6 - 56		6 - 43	6X1-48287-00	4 - 29	688-82575-01	1 - 8	93430-06024	3 - 9
704-48144-00	5 - 57	704-48221-00	5 - 67	EL8-48251-00	5 - 3	704-48287-00	3 - 18	6K1-8258A-40	1 - 24		4 - 13
	6 - 57		6 - 77		6 - 3		5 - 22	6X1-8258A-20	1 - 15		5 - 6
6X1-48147-00	4 - 16	704-48222-00	5 - 36	EL8-48254-00	5 - 29		6 - 22		2 - 15		6 - 6
6X1-48148-00	3 - 17		6 - 36		6 - 29	6X1-48288-00	4 - 5	6X1-8258A-30	2 - 16	95303-05700	1 - 13
EL8-48153-10	5 - 63	6X1-48224-00	3 - 30	EL8-48259-00	4 - 6	702-48288-00	3 - 5	6X1-82581-00	1 - 10		2 - 13
	6 - 63	6X1-48225-00	4 - 33		5 - 7		4 - 23		2 - 10	95380-03600	3 - 20
704-48156-00	6 - 72	704-48225-00	5 - 48		6 - 7	6X1-48289-00	3 - 28	704-82590-10	6 - 67	95380-04600	1 - 23
EL8-48158-00	5 - 31		6 - 48	6X1-48261-00	4 - 12	6X1-48293-00	4 - 40	703-82591-00	3 - 29		2 - 24
	6 - 31	704-48228-00	5 - 38	704-48261-00	5 - 17	6X1-48294-00	3 - 23		4 - 35	95380-05600	1 - 17
6X1-48163-00	4 - 18		6 - 38		6 - 17	6X1-48331-00	4 - 4	704-82594-00	5 - 37		2 - 18
EL8-48164-00	5 - 46	704-48228-10	6 - 70	704-48262-00	5 - 8	6X1-48333-00	3 - 15		6 - 37		4 - 43
	6 - 46	6X1-48229-00	4 - 3		6 - 8		4 - 9	688-83383-11	1 - 14		5 - 23
6X1-48165-00	4 - 42	704-48229-00	5 - 40	702-48263-00	5 - 52		4 - 14		2 - 14		6 - 23
6X1-48166-00	4 - 32		6 - 40		6 - 52		5 - 21	6Y5-8350T-80	1 - 19	95380-06600	5 - 42
704-48166-00	5 - 64	704-48229-10	6 - 68	704-48264-00	5 - 9		6 - 21		2 - 20		6 - 42
	6 - 64	EL8-48231-00	5 - 27		6 - 9	6X1-48353-00	3 - 35	6X1-83553-00	1 - 26	97303-05012	1 - 11
6X1-48171-00	3 - 3		6 - 27	704-48265-00	5 - 4	6X1-48353-10	3 - 42		2 - 28		2 - 11
	4 - 21	EL8-48232-00	5 - 45		6 - 4	6X1-48353-20	3 - 43	6X1-83621-00	2 - 25	97380-06018	5 - 20
6X1-48173-00	3 - 8		6 - 45	701-48266-00	4 - 36	6X1-48354-00	3 - 16	6X1-83622-00	2 - 26		6 - 20
6X1-48174-00	3 - 14	6X1-48232-A0	3 - 31	704-48266-00	5 - 10		4 - 10	6X1-85590-20	3 - 33	97890-05016	5 - 2
704-48176-00	5 - 58	6X1-48232-00	4 - 27		6 - 10		5 - 26	6X2-85885-10	3 - 12		6 - 2

NUMERICAL INDEX

PART NO.	REF. NO.	PART NO.	REF. NO.	PART NO.	REF. NO.	PART NO.	REF. NO.	PART NO.	REF. NO.	PART NO.	REF. NO.
97890-05025	5 - 16										
	6 - 16										
97890-06018	5 - 50										
	6 - 50										
98580-04006	5 - 32										
	6 - 32										
98580-05010	4 - 17										
98780-05018	5 - 33										
	6 - 33										

DUAL STATION SYSTEM
PARTS CATALOGUE

©2001 by Yamaha Motor Co., Ltd.
1st Edition, Jun. 2001

All rights reserved.

Any reprinting or unauthorized use
without the written permission of
Yamaha Motor Co., Ltd.
is expressly prohibited.

Printed in Japan