

PARTS CATALOGUE

DBW REMO-CON (6X61)



2009/10/1

1G6X6-100E1

()

NEWS NO.	DATE	COMMENT
PE0-OM-090042	Oct., 1, 2009	MOD:FIG.14 EXTENSION, WIRE HARNESS ADDITION

DBW REMO-CON
PARTS CATALOGUE
©2007 by Yamaha Motor Co., Ltd.
1st edition, November 2007
All rights reserved.
Any reprinting or unauthorized use
without the written permission of
Yamaha Motor Co., Ltd.
is expressly prohibited.
Printed in Japan.

FOREWORD

This Parts Catalogue is related to the parts for the model(s) on the cover page. When you are ordering replacement parts, please refer to this Parts Catalogue and quote both part numbers and part names correctly.

1. Modifications or additions which have been made after the issue of the Parts Catalogue will be announced in the Parts News.
It is advisable that you make the necessary corrections to the Parts Catalogue according to the Parts News.

2. Abbreviations

The following abbreviations are used in this Parts Catalogue.

“UR” Use specified parts number.

“UN” Use as many as needed.

“AP” Alternate Parts

“LM” Locally Made (Parts need to be ordered locally)

“F#” Frame No. (Applicable machine No.)

“O/S” Over Size

3. The number of components for assembly

- Parts, which are to be supplied in an assembly, are listed with a dot (.) in front of the part name as shown below.
- The numeral appearing to the right of each component part indicates the quantity of parts for each assembly unit.

PART NO.	DESCRIPTION	Q'TY	REMARKS
2F5-83310-60	FRONT FLASHER LIGHT ASSY	2	
115-83311-60	.BULB (6V-18W)	1	

4. Applicable colours of graphics are represented in the “REMARKS” as shown below.

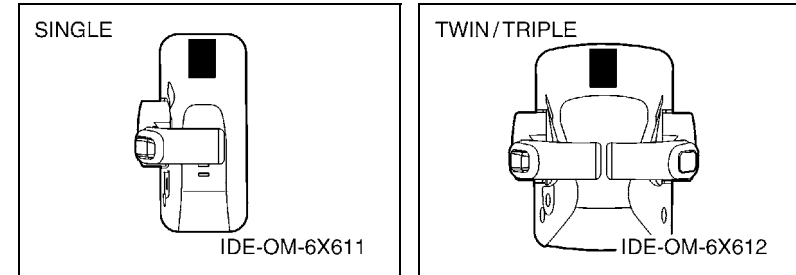
PART NO.	DESCRIPTION	Q'TY	REMARKS
2N4-24110-00-X5	FUEL TANK COMP.	2	MXR
3J1-24240-10	.GRAPHIC, FUEL TANK	1	FOR MXR

5. Note that the illustrations for reference in finding parts numbers are not to be used for assembling. When assembling, please use the applicable service manual.

6. The asterisk (*) before a reference number indicates modified items after the first edition.

7. Applicable Serial No.

Engine Serial No.



8. Applicable Engine Starting Serial No.

Model	Serial No.	Model	Serial No.
6X6	A:0000001-	6X6	B:0500001-
6X6	C:1000001-	6X6	D:1500001-
6X6	F:2500001-	6X6	G:3000001-
6X6	H:3500001-	6X6	K:5000001-

9. Applicable Colour Code

Abbreviation	Colour Name	Colour Code

10. Quantity Column Information

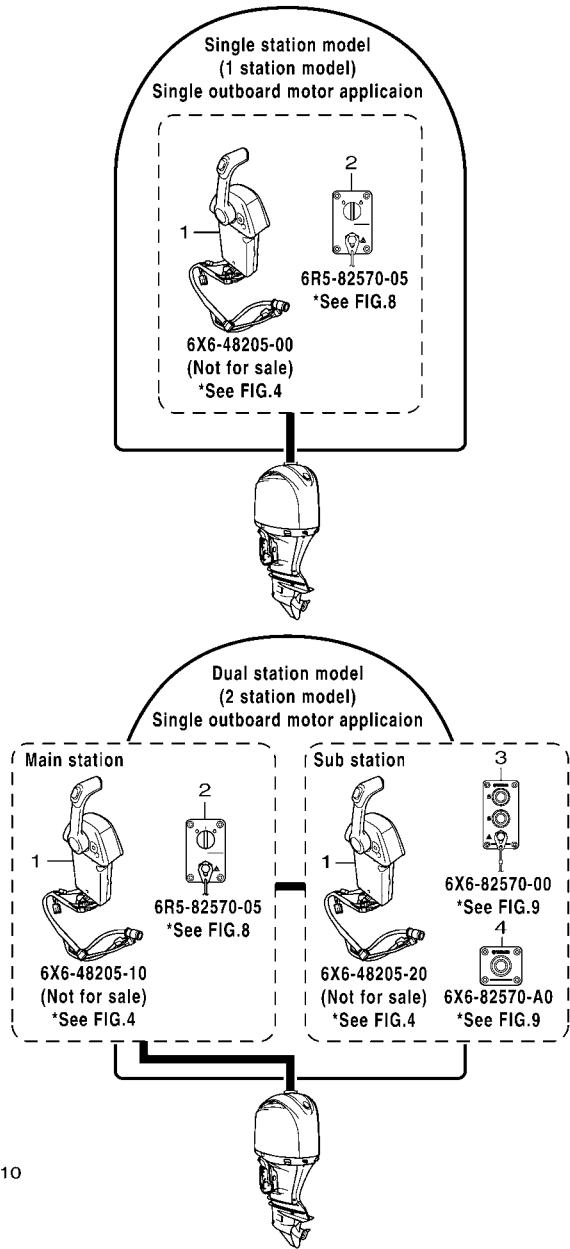
Column No.	Name Of Q'ty Column	Applicable Model
1	6X61	DBW REMOTE CONTROL

CONTENTS

LAYOUT CHART 1 (SINGLE)	1
LAYOUT CHART 2 (TWIN)	2
LAYOUT CHART 3 (TRIPLE)	3
DBW REMOTE CONTROL 1 (SINGLE)	4
DBW REMOTE CONTROL 2 (TWIN)	7
DBW REMOTE CONTROL 3 (TRIPLE)	11
ELECTRICAL DBW REMOTE CONTROL	15
SWITCH & PANEL 1 (SINGLE)	16
SWITCH & PANEL 2 (SINGLE)	17
SWITCH & PANEL 3 (TWIN)	18
SWITCH & PANEL 4 (TWIN)	19
SWITCH & PANEL 5 (TRIPLE)	20
SWITCH & PANEL 6 (TRIPLE)	21
ELECTRICAL WIRE HARNESS	22

INDEX

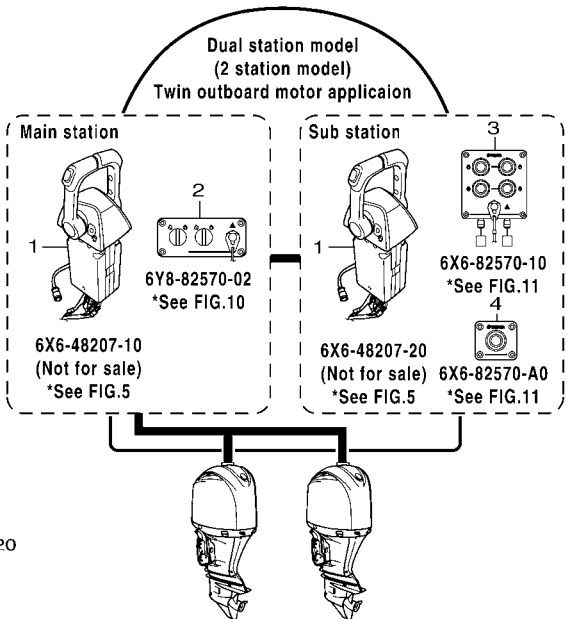
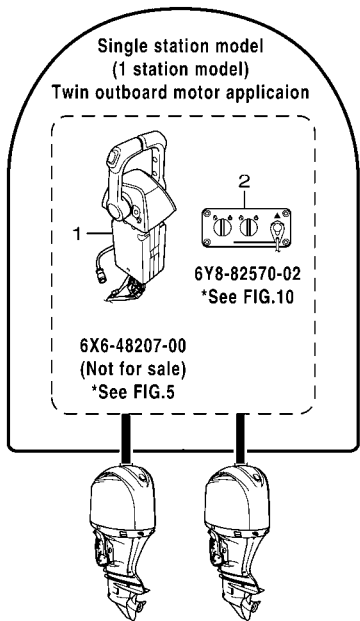
NUMERICAL INDEX	23
-----------------------	----



6X61100-G010

FIG. 1 LAYOUT CHART 1 (SINGLE)

REF. NO.	PART NO.	DESCRIPTION	6X61				REMARKS
1	6X6-48205-00	REMOTE CONTROL ASSY (SINGLE)	1				NOT FOR SALE
	6X6-48205-10	REMOTE CONTROL ASSY	1				NOT FOR SALE
	6X6-48205-20	REMOTE CONTROL ASSY	1				NOT FOR SALE
2	6R5-82570-05	PANEL SWITCH ASSY	1				1 & 2 STATION MAIN
3	6X6-82570-00	PANEL SWITCH ASSY (SINGLE)	1				2 STATION SUB
4	6X6-82570-A0	PANEL SWITCH ASSY	2				2 STATION SUB
<hr/>							
<hr/>							
<hr/>							
<hr/>							
<hr/>							
<hr/>							
<hr/>							
<hr/>							
<hr/>							
<hr/>							
<hr/>							



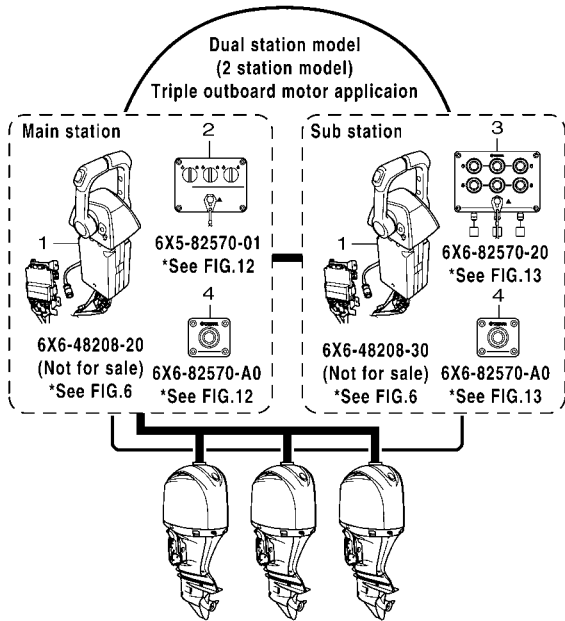
6X61100-G020

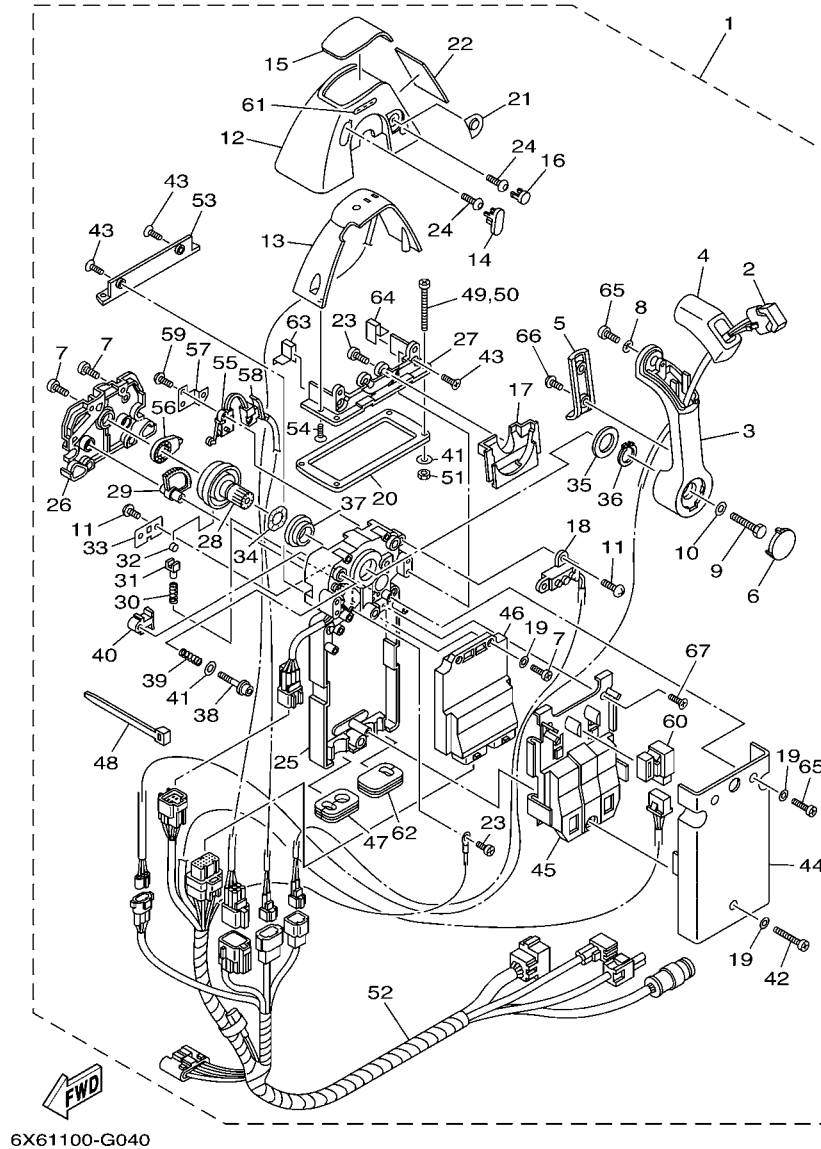
FIG. 2 LAYOUT CHART 2 (TWIN)

REF. NO.	PART NO.	DESCRIPTION	6X61	REMARKS
1	6X6-48207-00	REMOTE CONTROL ASSY (TWIN)	1	NOT FOR SALE
	6X6-48207-10	REMOTE CONTROL ASSY	1	NOT FOR SALE
	6X6-48207-20	REMOTE CONTROL ASSY	1	NOT FOR SALE
2	6Y8-82570-02	PANEL SW., TWIN	1	1 & 2 STATION MAIN
3	6X6-82570-10	PANEL SWITCH ASSY (TWIN)	1	2 STATION SUB
4	6X6-82570-A0	PANEL SWITCH ASSY	2	2 STATION SUB

FIG. 3 LAYOUT CHART 3 (TRIPLE)

REF. NO.	PART NO.	DESCRIPTION	6X61				REMARKS
1	6X6-48208-20	REMOTE CONTROL ASSY	1				NOT FOR SALE
	6X6-48208-30	REMOTE CONTROL ASSY	1				NOT FOR SALE
2	6X5-82570-01	PANEL SWITCH ASSY	1				2 STATION MAIN
3	6X6-82570-20	PANEL SWITCH ASSY	1				2 STATION SUB
4	6X6-82570-A0	PANEL SWITCH ASSY	2				

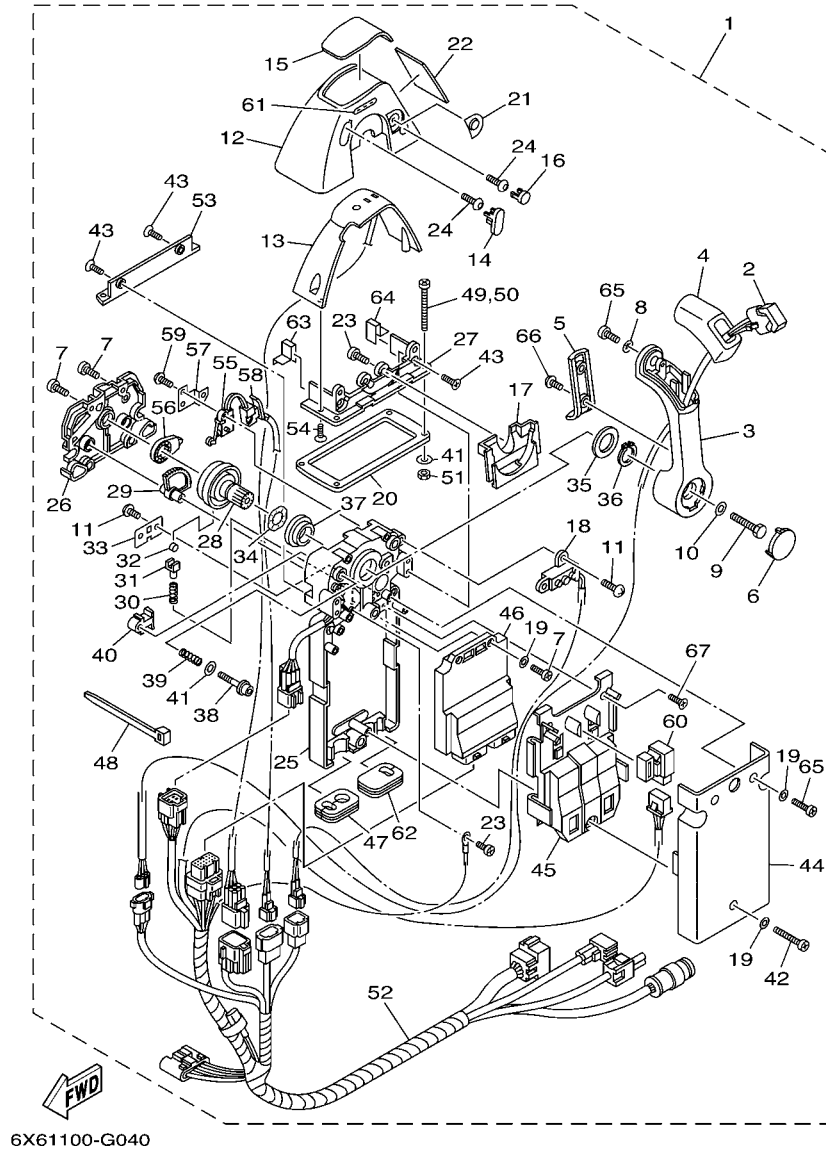




6X61100-G040

FIG. 4 DBW REMOTE CONTROL 1 (SINGLE)

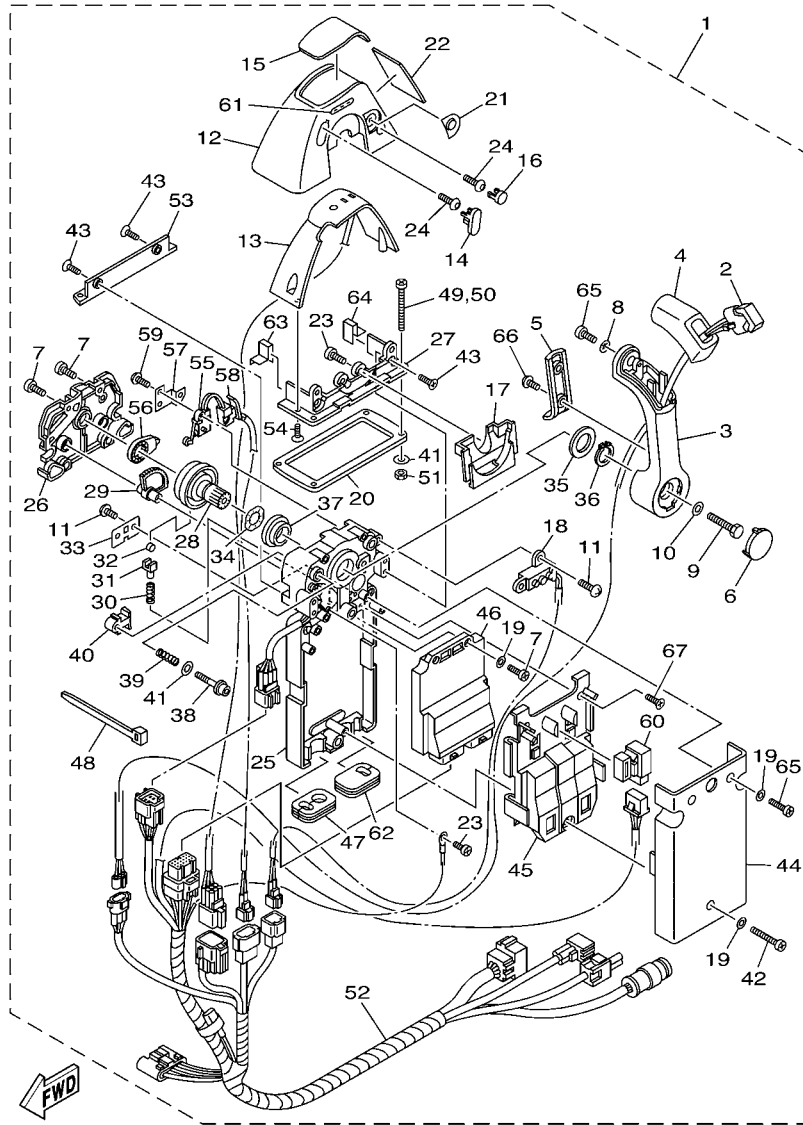
REF. NO.	PART NO.	DESCRIPTION	6X61			REMARKS
1	6X6-48205-00	REMOTE CONTROL ASSY (SINGLE)	1			NOT FOR SALE
	6X6-48205-10	REMOTE CONTROL ASSY	1			NOT FOR SALE
	6X6-48205-20	REMOTE CONTROL ASSY	1			NOT FOR SALE
2	6X6-82563-00	.TRIM & TILT SWITCH ASSY	1			
3	6X6-48221-00	.LEVER, CONTROL	1			
4	6X6-48222-00	.GRIP, CONTROL LEVER	1			
5	6X6-48224-00	.COVER, CONTROL LEVER	1			
6	6X6-48224-10	.COVER, CONTROL LEVER	1			
7	98580-05014	.SCREW, PAN HEAD	6			
8	92990-05300	.WASHER, INTERNAL TOOTH	1			
9	6X6-48171-00	.BOLT	1			
10	92990-08600	.WASHER, PLATE	1			
11	EL8-48127-00	.SCREW 1	4			
12	6X6-48119-00	.COVER	1			
13	6X6-84301-00	.PILOT LIGHT ASSY 1	1			
14	6X6-48167-00	.PLUG	1			
15	6X6-48215-00	.GRAPHIC	1			
16	6X6-48167-50	.PLUG	1			
17	6X6-48219-00	.COVER, LEAD	1			
18	6X6-8259E-00	.SWITCH ASSY	1			
19	92990-05200	.WASHER, PLAIN	5			
20	6X6-48176-00	.GROMMET	1			
21	6X6-48225-00	.COVER	1			
22	6X6-48216-00	.GRAPHIC	1			
23	98580-04010	.SCREW, PAN HEAD	3			
24	92D80-05016	.BOLT, SOCKET HEAD	2			
25	6X6-481A0-01	.REMO-CON. CASE ASSY	1			



6X61100-G040

FIG. 4 DBW REMOTE CONTROL 1 (SINGLE)

REF. NO.	PART NO.	DESCRIPTION	6X61			REMARKS
26	6X6-48212-00	.BACK PLATE 1	1			
27	6X6-48144-10	.PLATE, STOPPER 2	1			
28	6X6-48242-01	.SHAFT, DRIVE	1			
29	6X6-48233-00	.GEAR 2	1			
30	6X6-48238-00	.SPRING, DETENT	1			
31	6X6-48237-00	.ADAPTOR	1			
32	6X6-48236-00	.ROLLER, DETENT	1			
33	6X6-48189-00	.RETAINER	1			
34	703-48198-00	.WASHER, WAVE	1			
35	6X6-48193-00	.WASHER 3	1			
36	6X6-48118-00	.CLIP, SHIFT LEVER	1			
37	6X6-48234-00	.BUSHING 1	1			
38	6X6-48267-00	.BOLT SET	1			
39	6X6-48158-00	.SPRING 1	1			
40	6X6-48264-00	.FRICTION, THROTTLE	1			
41	704-48287-00	.WASHER	5			
42	6X6-81145-00	.SCREW 1	1			
43	98780-05014	.SCREW, FLAT HEAD	4			
44	6X6-48213-00	.BACK PLATE 2	1			
45	6X6-48228-00	.HOLDER, SWITCH	1			
46	6X6-85590-10	.CONTROL UNIT ASSY	1			1 STATION
	6X6-85590-00	.CONTROL UNIT ASSY	1			2 STATION
47	6X6-48175-00	.BOOT	1			1 STATION
	6X6-48175-00	.BOOT	2			2 STATION
48	703-82591-00	.BAND	3			1 STATION
	703-82591-00	.BAND	4			2 STATION
49	97780-50145	.SCREW, TAPPING	4			



6X61100-G040

FIG. 4 DBW REMOTE CONTROL 1 (SINGLE)

REF. NO.	PART NO.	DESCRIPTION	6X61		REMARKS
50	98580-05060	.SCREW, PAN HEAD	4		
51	95380-05600	.NUT	4		
52	6X6-82590-00	.WIRE HARNESS ASSY	1		1 STATION
	6X6-82590-20	.WIRE HARNESS ASSY	1		2 STATION MAIN
	6X6-82590-50	.WIRE HARNESS ASSY	1		2 STATION SUB
53	6X6-48144-00	.PLATE, STOPPER 2	1		
54	6X6-48129-00	.SCREW 3	2		
55	6X6-82540-00	.NEUTRAL SWITCH ASSY	1		
56	6X6-48241-00	.ARM, DRIVE	1		
57	6X6-48245-01	.PLATE, LOCK	1		
58	6X6-82545-00	.GROMMET	1		
59	6X6-8252V-00	.SCREW, SPECIAL	2		
60	704-81950-10	.RELAY ASSY	1		
61	6X6-44191-00	.INDICATOR, SHIFT	1		
62	6X6-48175-10	.BOOT	1		1 STATION ONLY
63	6X6-48176-50	.GROMMET	1		
64	6X6-48176-60	.GROMMET	1		
65	6X6-48127-00	.SCREW 1	3		
66	6X6-48128-00	.SCREW 2	2		
67	6X6-81146-00	.SCREW 2	2		

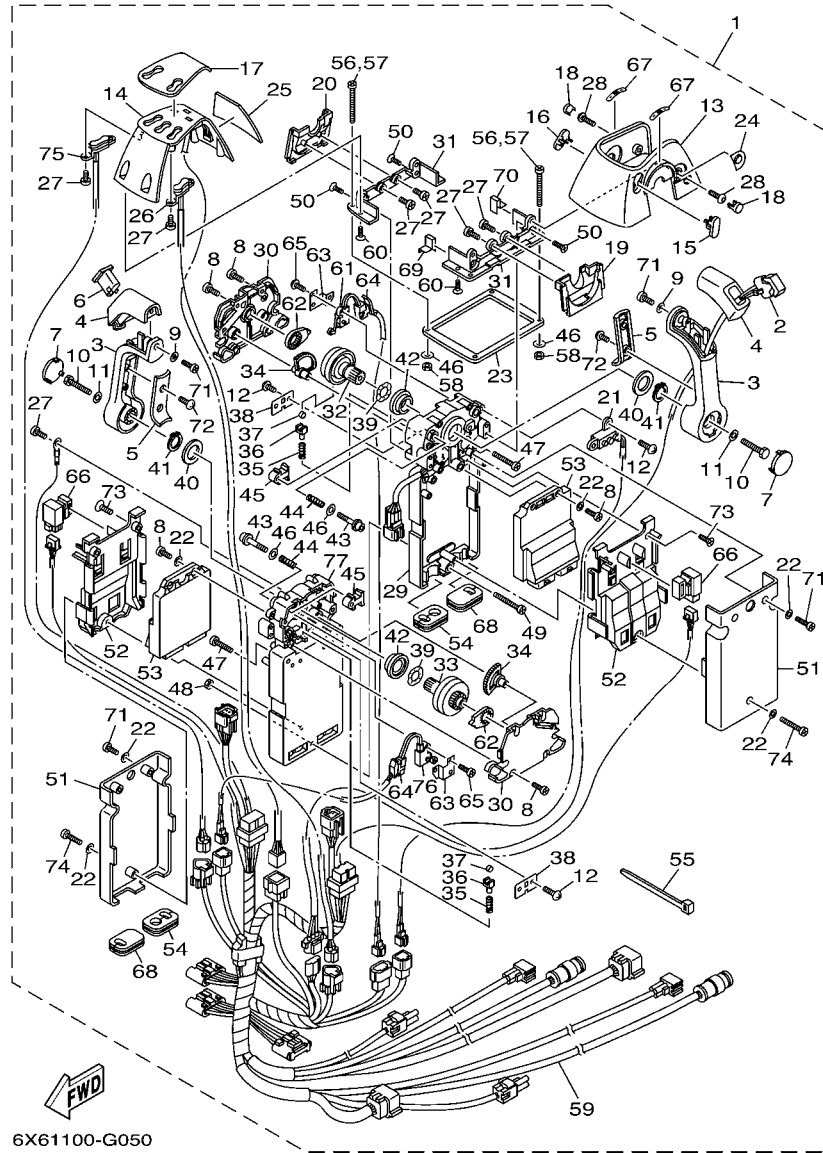


FIG. 5 DBW REMOTE CONTROL 2 (TWIN)

REF. NO.	PART NO.	DESCRIPTION	6X61		REMARKS
1	6X6-48207-00	REMOTE CONTROL ASSY (TWIN)	1		NOT FOR SALE
	6X6-48207-10	REMOTE CONTROL ASSY	1		NOT FOR SALE
	6X6-48207-20	REMOTE CONTROL ASSY	1		NOT FOR SALE
2	6X6-82563-00	.TRIM & TILT SWITCH ASSY	1		
3	6X6-48221-00	.LEVER, CONTROL	2		
4	6X6-48222-00	.GRIP, CONTROL LEVER	2		
5	6X6-48224-00	.COVER, CONTROL LEVER	2		
6	6X6-48222-10	.GRIP, CONTROL LEVER	1		
7	6X6-48224-10	.COVER, CONTROL LEVER	2		
8	98580-05014	.SCREW, PAN HEAD	12		
9	92990-05300	.WASHER, INTERNAL TOOTH	2		
10	6X6-48171-00	.BOLT	2		
11	92990-08600	.WASHER, PLATE	2		
12	EL8-48127-00	.SCREW 1	6		
13	6X6-48119-10	.COVER	1		
14	6X6-84301-10	.PILOT LIGHT ASSY 1	1		
15	6X6-48167-10	.PLUG	1		
16	6X6-48167-20	.PLUG	1		
17	6X6-48215-10	.GRAPHIC	1		
18	6X6-48167-60	.PLUG	2		
19	6X6-48219-10	.COVER, LEAD	1		
20	6X6-48219-20	.COVER, LEAD	1		
21	6X6-8259E-00	.SWITCH ASSY	1		
22	92990-05200	.WASHER, PLAIN	10		
23	6X6-48176-10	.GROMMET	1		
24	6X6-48225-00	.COVER	1		
25	6X6-48216-10	.GRAPHIC	1		

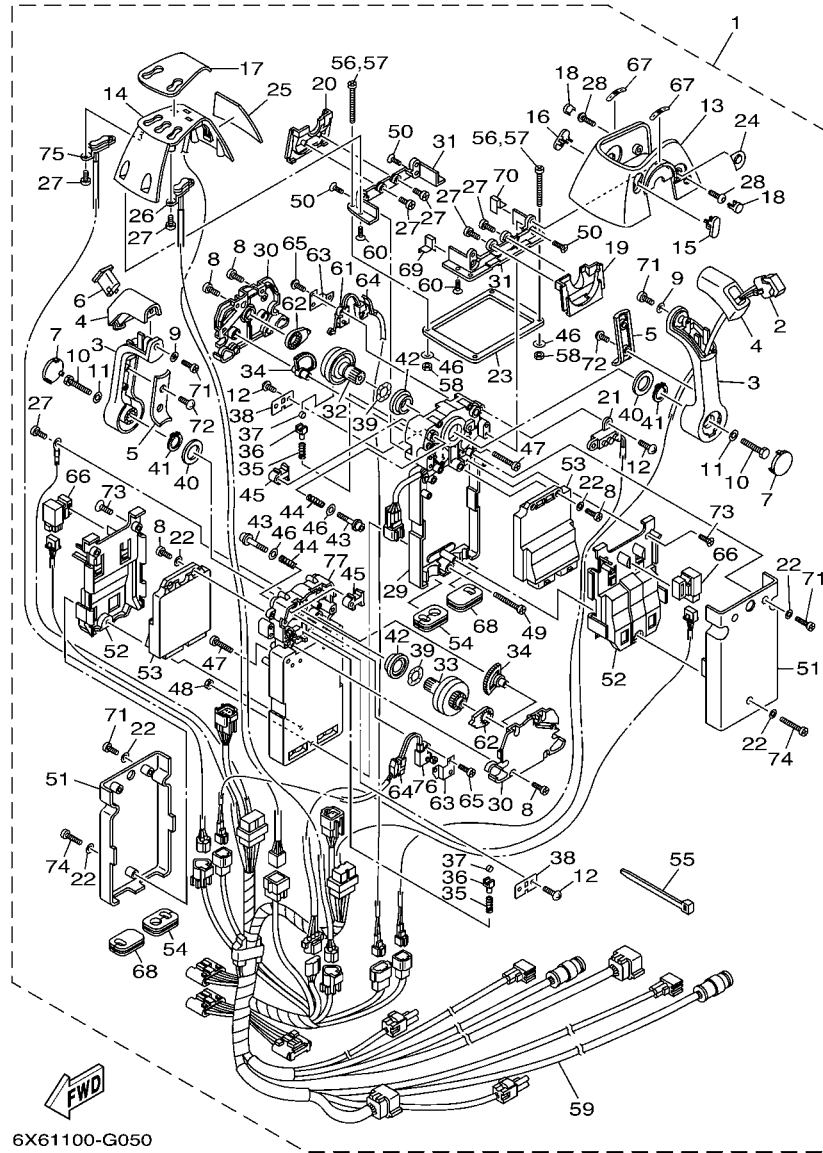


FIG. 5 DBW REMOTE CONTROL 2 (TWIN)

REF. NO.	PART NO.	DESCRIPTION	6X61			REMARKS
26	6X6-82563-10	.TRIM & TILT SWITCH ASSY	1			
27	98580-04010	.SCREW, PAN HEAD	9			
28	92D80-05016	.BOLT, SOCKET HEAD	2			
29	6X6-481A0-01	.REMO-CON. CASE ASSY	1			
30	6X6-48212-00	.BACK PLATE 1	2			
31	6X6-48144-10	.PLATE, STOPPER 2	2			
32	6X6-48242-01	.SHAFT, DRIVE	1			
33	6X6-48242-11	.SHAFT, DRIVE	1			
34	6X6-48233-00	.GEAR 2	2			
35	6X6-48238-00	.SPRING, DETENT	2			
36	6X6-48237-00	.ADAPTOR	2			
37	6X6-48236-00	.ROLLER, DETENT	2			
38	6X6-48189-00	.RETAINER	2			
39	703-48198-00	.WASHER, WAVE	2			
40	6X6-48193-00	.WASHER 3	2			
41	6X6-48118-00	.CLIP, SHIFT LEVER	2			
42	6X6-48234-00	.BUSHING 1	2			
43	6X6-48267-00	.BOLT SET	2			
44	6X6-48158-00	.SPRING 1	2			
45	6X6-48264-00	.FRICTION, THROTTLE	2			
46	704-48287-00	.WASHER	6			
47	98580-05025	.SCREW, PAN HEAD	2			
48	704-48156-00	.NUT 1	1			
49	704-48283-00	.SCREW	1			
50	98780-05014	.SCREW, FLAT HEAD	4			
51	6X6-48213-00	.BACK PLATE 2	2			
52	6X6-48228-00	.HOLDER, SWITCH	2			

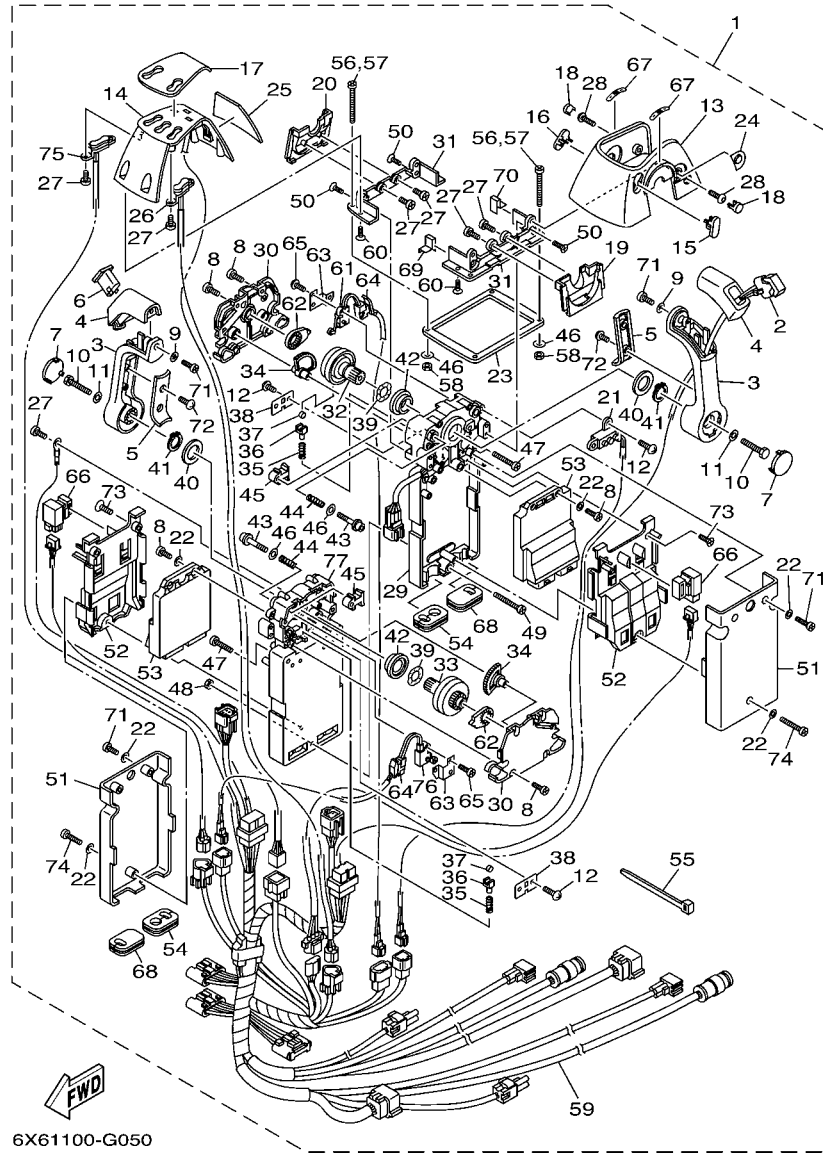
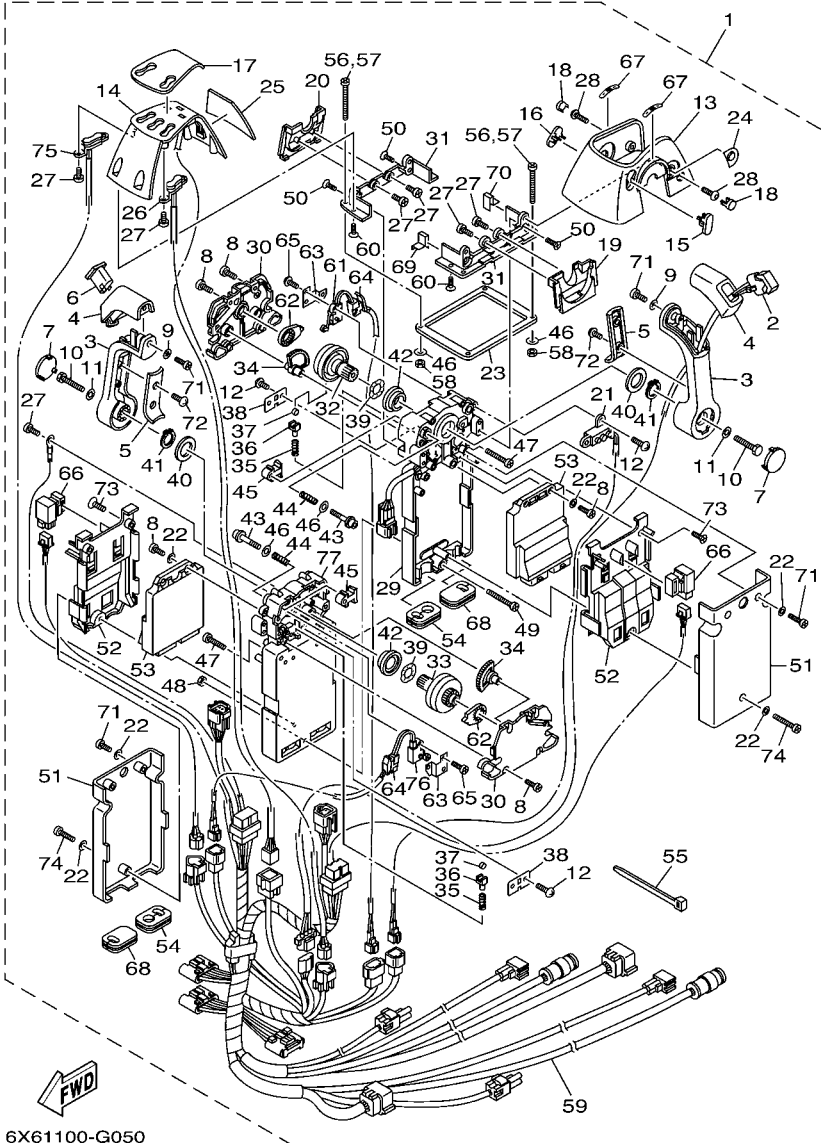


FIG. 5 DBW REMOTE CONTROL 2 (TWIN)

REF. NO.	PART NO.	DESCRIPTION	QTY	REMARKS
53	6X6-85590-10	.CONTROL UNIT ASSY	2	1 STATION
	6X6-85590-00	.CONTROL UNIT ASSY	2	2 STATION
54	6X6-48175-00	.BOOT	2	1 STATION
	6X6-48175-00	.BOOT	4	2 STATION
55	703-82591-00	.BAND	6	1 STATION
	703-82591-00	.BAND	8	2 STATION
56	97780-50145	.SCREW, TAPPING	4	
57	98580-05060	.SCREW, PAN HEAD	4	
58	95380-05600	.NUT	4	
59	6X6-82590-10	.WIRE HARNESS ASSY	1	1 STATION
	6X6-82590-30	.WIRE HARNESS ASSY	1	2 STATION MAIN
	6X6-82590-60	.WIRE HARNESS ASSY	1	2 STATION SUB
60	6X6-48129-00	.SCREW 3	4	
61	6X6-82540-00	.NEUTRAL SWITCH ASSY	1	
62	6X6-48241-00	.ARM, DRIVE	2	
63	6X6-48245-01	.PLATE, LOCK	2	
64	6X6-82545-00	.GROMMET	2	
65	6X6-8252V-00	.SCREW, SPECIAL	4	
66	704-81950-10	.RELAY ASSY	2	
67	6X6-44191-00	.INDICATOR, SHIFT	2	
68	6X6-48175-10	.BOOT	2	1 STATION ONLY
69	6X6-48176-50	.GROMMET	1	
70	6X6-48176-60	.GROMMET	1	
71	6X6-48127-00	.SCREW 1	6	
72	6X6-48128-00	.SCREW 2	4	
73	6X6-81146-00	.SCREW 2	4	
74	6X6-81145-00	.SCREW 1	2	

FIG. 5 DBW REMOTE CONTROL 2 (TWIN)



REF. NO.	PART NO.	DESCRIPTION	6X61				REMARKS
75	6X6-82563-20	.TRIM & TILT SWITCH ASSY	1				
76	6X6-82540-10	.NEUTRAL SWITCH ASSY	1				
77	6X6-481A0-21	.REMO-CON. CASE ASSY	1				

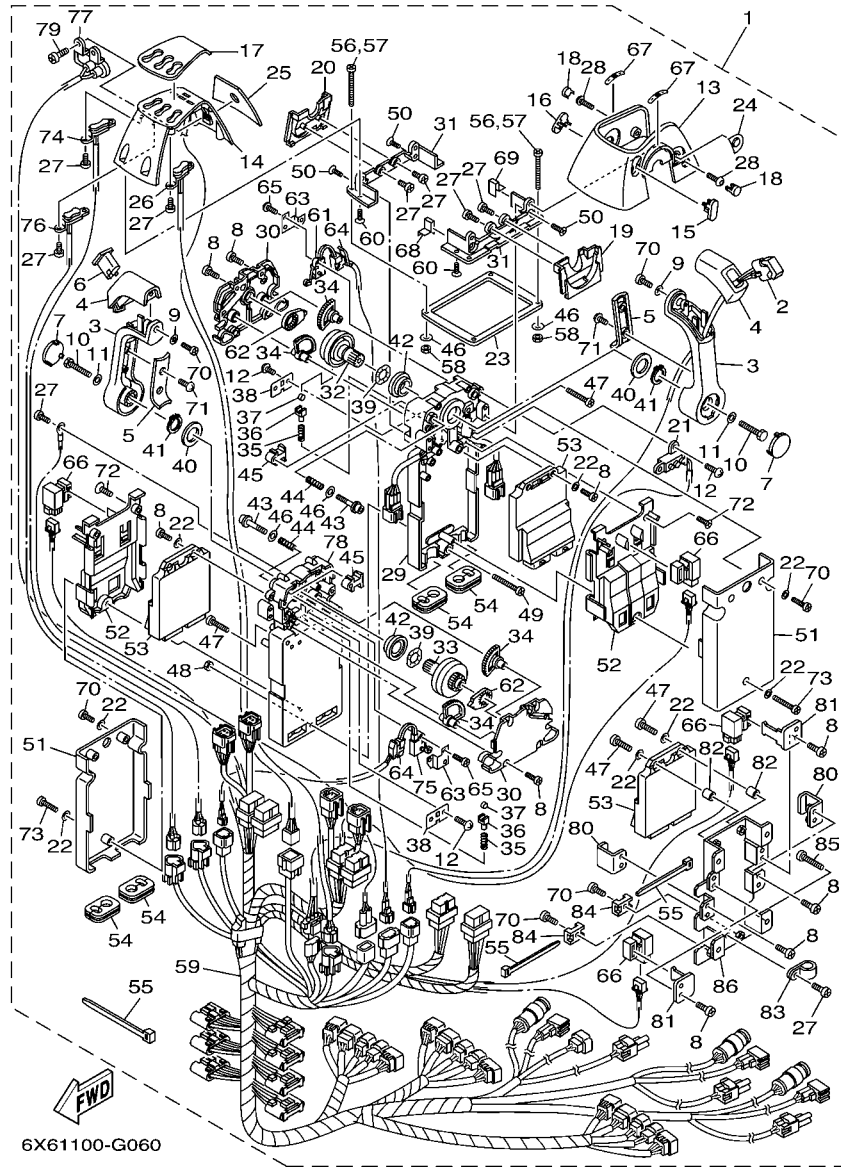


FIG. 6 DBW REMOTE CONTROL 3 (TRIPLE)

REF. NO.	PART NO.	DESCRIPTION	6X61		REMARKS
1	6X6-48208-20	REMOTE CONTROL ASSY	1		NOT FOR SALE
	6X6-48208-30	REMOTE CONTROL ASSY	1		NOT FOR SALE
2	6X6-82563-00	.TRIM & TILT SWITCH ASSY	1		
3	6X6-48221-00	.LEVER, CONTROL	2		
4	6X6-48222-00	.GRIP, CONTROL LEVER	2		
5	6X6-48224-00	.COVER, CONTROL LEVER	2		
6	6X6-48222-10	.GRIP, CONTROL LEVER	1		
7	6X6-48224-10	.COVER, CONTROL LEVER	2		
8	98580-05014	.SCREW, PAN HEAD	20		
9	92990-05300	.WASHER, INTERNAL TOOTH	2		
10	6X6-48171-00	.BOLT	2		
11	92990-08600	.WASHER, PLATE	2		
12	EL8-48127-00	.SCREW 1	6		
13	6X6-48119-10	.COVER	1		
14	6X6-84301-20	.PILOT LIGHT ASSY 1	1		
15	6X6-48167-10	.PLUG	1		
16	6X6-48167-20	.PLUG	1		
17	6X6-48215-20	.GRAPHIC	1		
18	6X6-48167-60	.PLUG	2		
19	6X6-48219-10	.COVER, LEAD	1		
20	6X6-48219-20	.COVER, LEAD	1		
21	6X6-8259E-00	.SWITCH ASSY	1		
22	92990-05200	.WASHER, PLAIN	12		
23	6X6-48176-10	.GROMMET	1		
24	6X6-48225-00	.COVER	1		
25	6X6-48216-20	.GRAPHIC	1		
26	6X6-82563-10	.TRIM & TILT SWITCH ASSY	1		

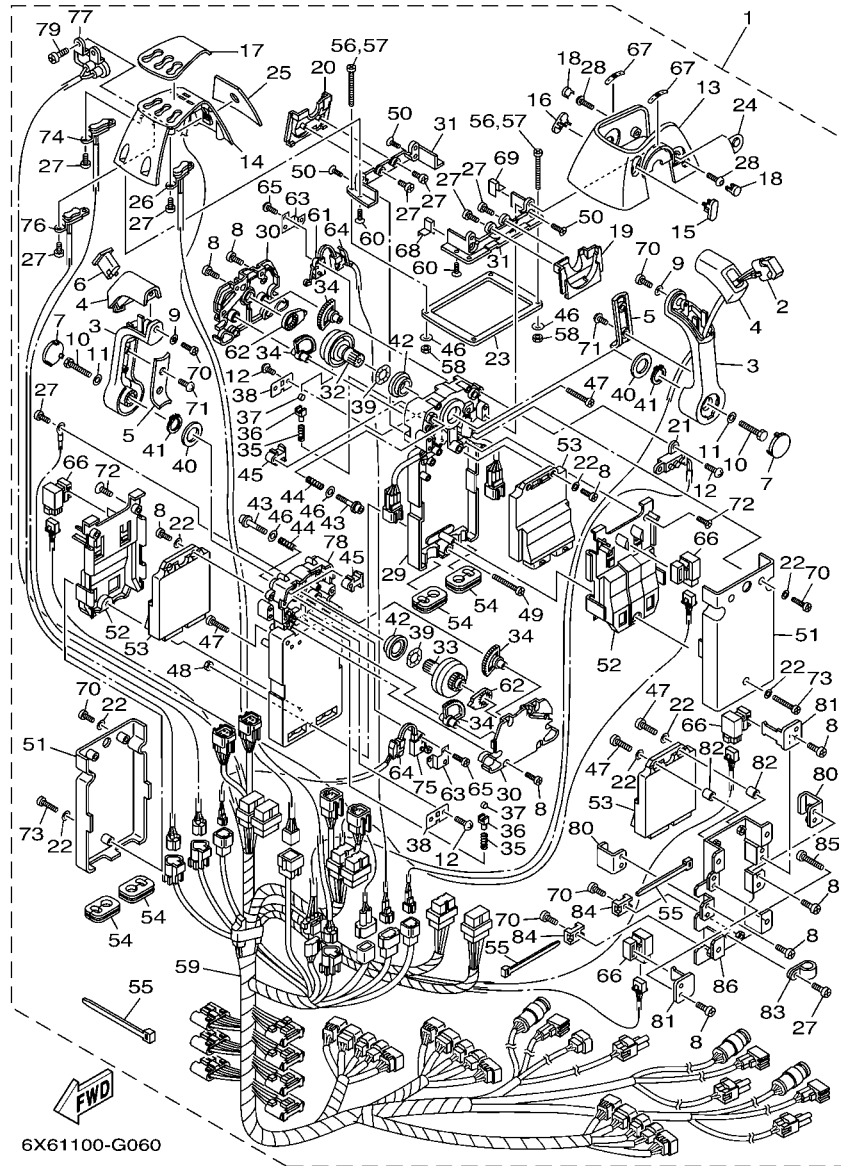
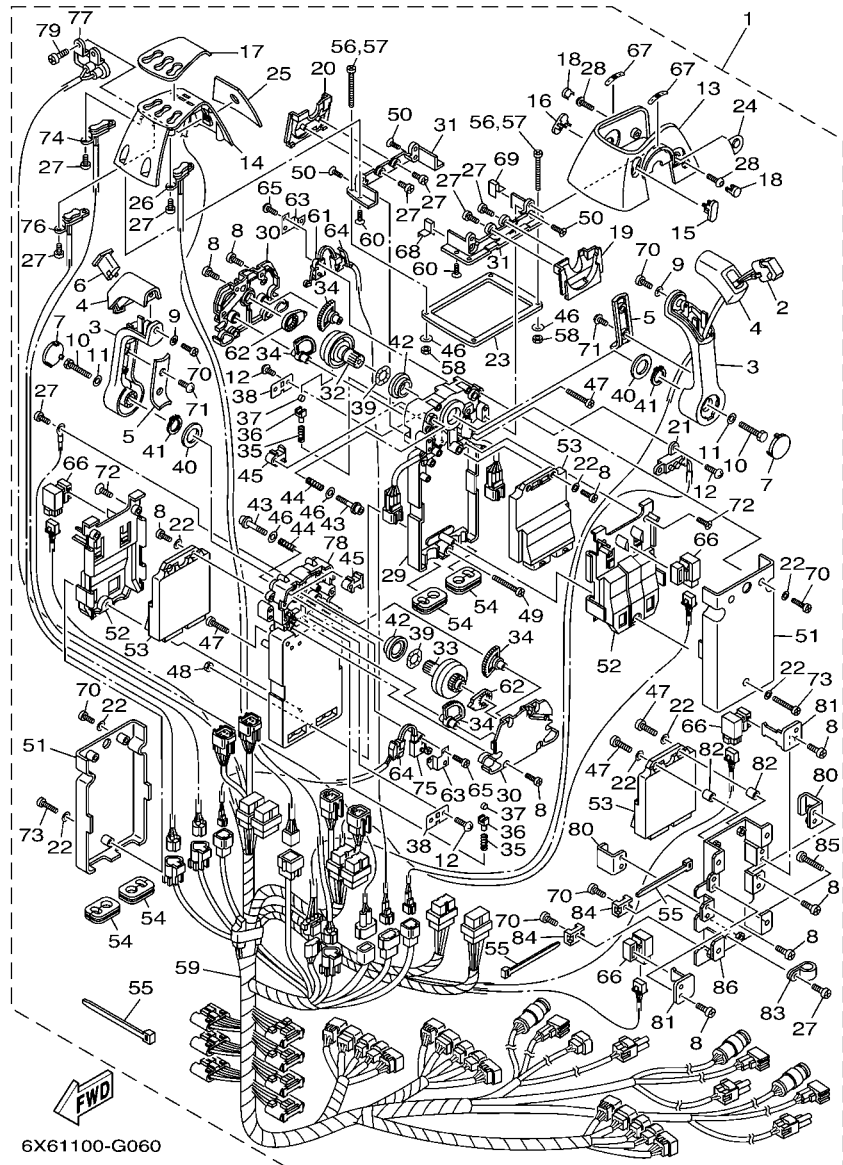


FIG. 6 DBW REMOTE CONTROL 3 (TRIPLE)

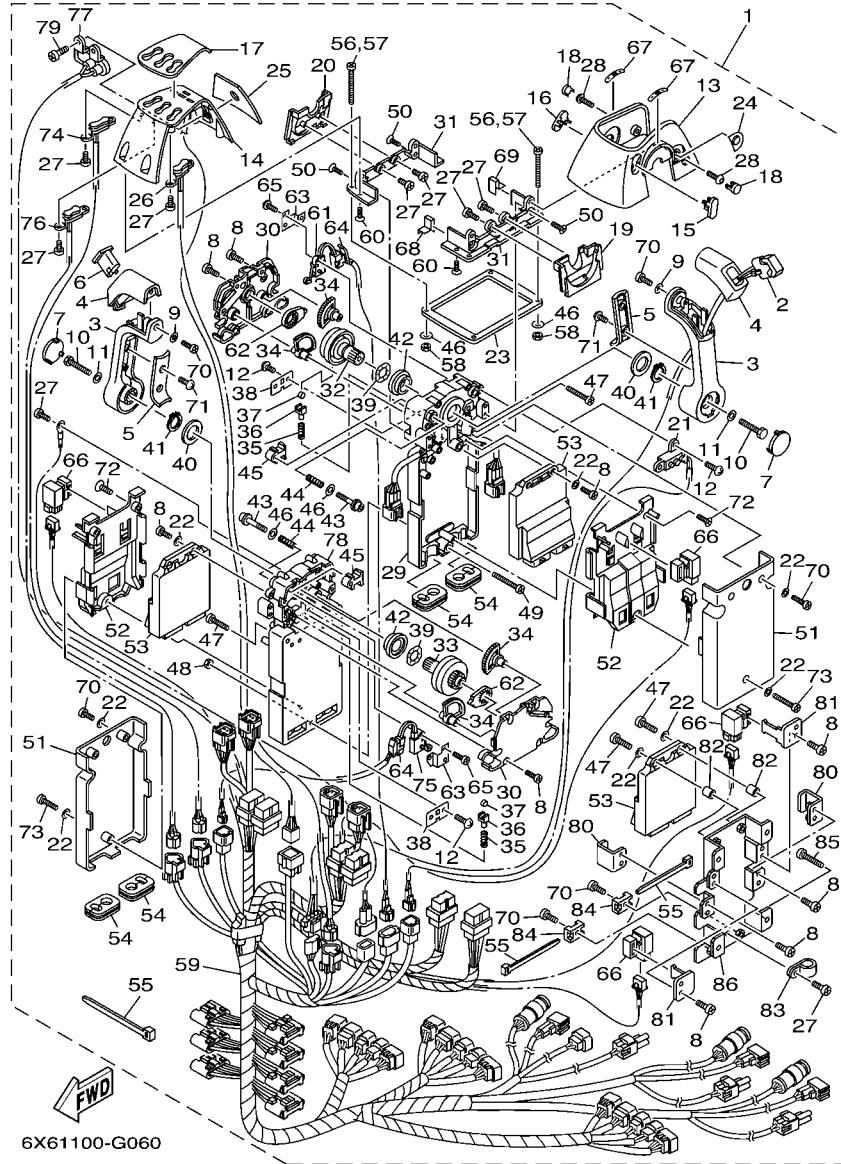
REF. NO.	PART NO.	DESCRIPTION	6X61			REMARKS
27	98580-04010	.SCREW, PAN HEAD	12			
28	92D80-05016	.BOLT, SOCKET HEAD	2			
29	6X6-481A0-11	.REMO-CON. CASE ASSY	1			
30	6X6-48212-00	.BACK PLATE 1	2			
31	6X6-48144-10	.PLATE, STOPPER 2	2			
32	6X6-48242-01	.SHAFT, DRIVE	1			
33	6X6-48242-11	.SHAFT, DRIVE	1			
34	6X6-48233-00	.GEAR 2	4			
35	6X6-48238-00	.SPRING, DETENT	2			
36	6X6-48237-00	.ADAPTOR	2			
37	6X6-48236-00	.ROLLER, DETENT	2			
38	6X6-48189-00	.RETAINER	2			
39	703-48198-00	.WASHER, WAVE	2			
40	6X6-48193-00	.WASHER 3	2			
41	6X6-48118-00	.CLIP, SHIFT LEVER	2			
42	6X6-48234-00	.BUSHING 1	2			
43	6X6-48267-00	.BOLT SET	2			
44	6X6-48158-00	.SPRING 1	2			
45	6X6-48264-00	.FRICTION, THROTTLE	2			
46	704-48287-00	.WASHER	6			
47	98580-05025	.SCREW, PAN HEAD	4			
48	704-48156-00	.NUT 1	1			
49	704-48283-00	.SCREW	1			
50	98780-05014	.SCREW, FLAT HEAD	4			
51	6X6-48213-00	.BACK PLATE 2	2			
52	6X6-48228-00	.HOLDER, SWITCH	2			
53	6X6-85590-00	.CONTROL UNIT ASSY	3			

FIG. 6 DBW REMOTE CONTROL 3 (TRIPLE)



REF. NO.	PART NO.	DESCRIPTION	6X61		REMARKS
54	6X6-48175-00	.BOOT	4		
55	703-82591-00	.BAND	10		
56	97780-50145	.SCREW, TAPPING	4		
57	98580-05060	.SCREW, PAN HEAD	4		
58	95380-05600	.NUT	4		
59	6X6-82590-80	.WIRE HARNESS ASSY	1		2 STATION MAIN
	6X6-82590-90	.WIRE HARNESS ASSY	1		2 STATION SUB
60	6X6-48129-00	.SCREW 3	4		
61	6X6-82540-00	.NEUTRAL SWITCH ASSY	1		
62	6X6-48241-00	.ARM, DRIVE	2		
63	6X6-48245-01	.PLATE, LOCK	2		
64	6X6-82545-00	.GROMMET	2		
65	6X6-8252V-00	.SCREW, SPECIAL	4		
66	704-81950-10	.RELAY ASSY	4		
67	6X6-44191-00	.INDICATOR, SHIFT	2		
68	6X6-48176-50	.GROMMET	1		
69	6X6-48176-60	.GROMMET	1		
70	6X6-48127-00	.SCREW 1	8		
71	6X6-48128-00	.SCREW 2	4		
72	6X6-81146-00	.SCREW 2	4		
73	6X6-81145-00	.SCREW 1	2		
74	6X6-82563-20	.TRIM & TILT SWITCH ASSY	1		
75	6X6-82540-10	.NEUTRAL SWITCH ASSY	1		
76	6X6-82563-30	.TRIM & TILT SWITCH ASSY	1		
77	6X6-8259F-00	.SWITCH ASSY	1		
78	6X6-481A0-31	.REMO-CON. CASE ASSY	1		
79	98780-05010	.SCREW, FLAT HEAD	2		

FIG. 6 DBW REMOTE CONTROL 3 (TRIPLE)



REF. NO.	PART NO.	DESCRIPTION	6X61		REMARKS
80	6X6-85557-00	.HOLDER	2		
81	6X6-82591-00	.BAND	2		
82	6X6-8252S-00	.SPACER, 1	2		
83	6X6-82584-00	.CAP, SWITCH	1		
84	6X6-82581-00	.STAY, CORD CLAMP	2		
85	6X0-48128-00	.SCREW(M6X30)	4		
86	6X6-48211-10	.HOUSING,1	1		

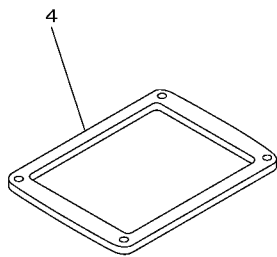
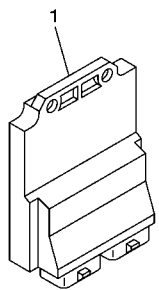
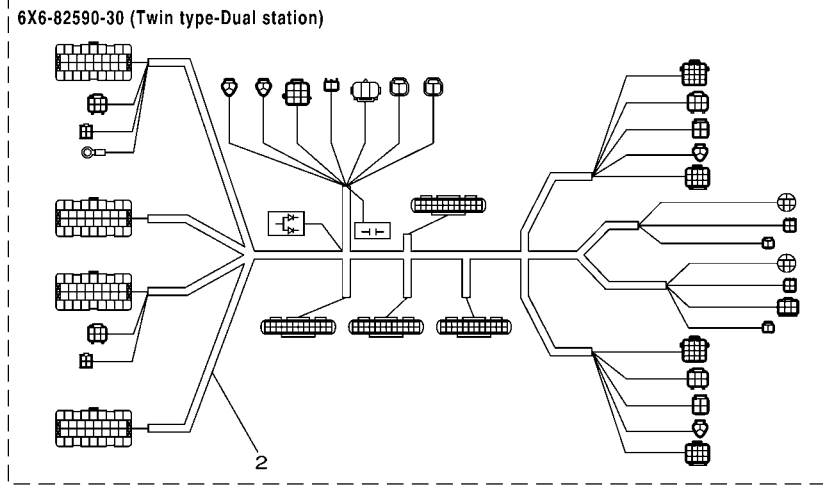
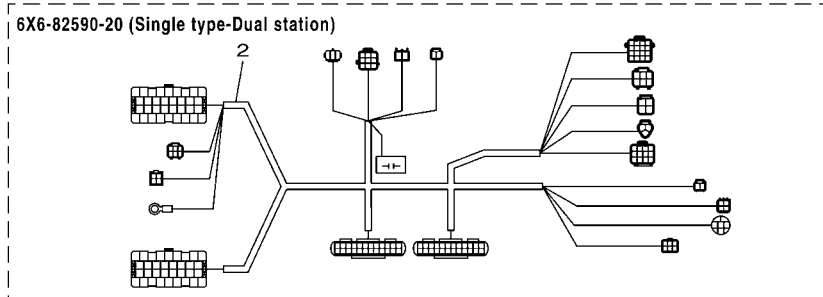
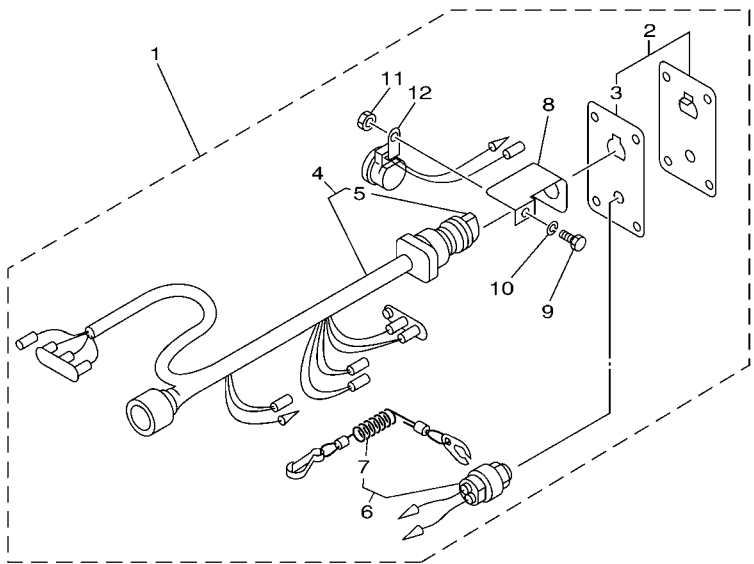


FIG. 7 ELECTRICAL DBW REMOTE CONTROL

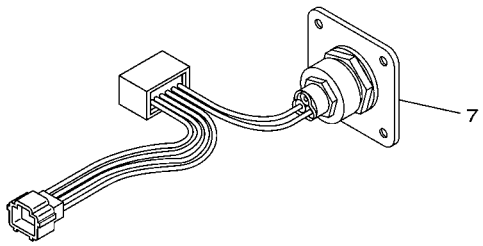
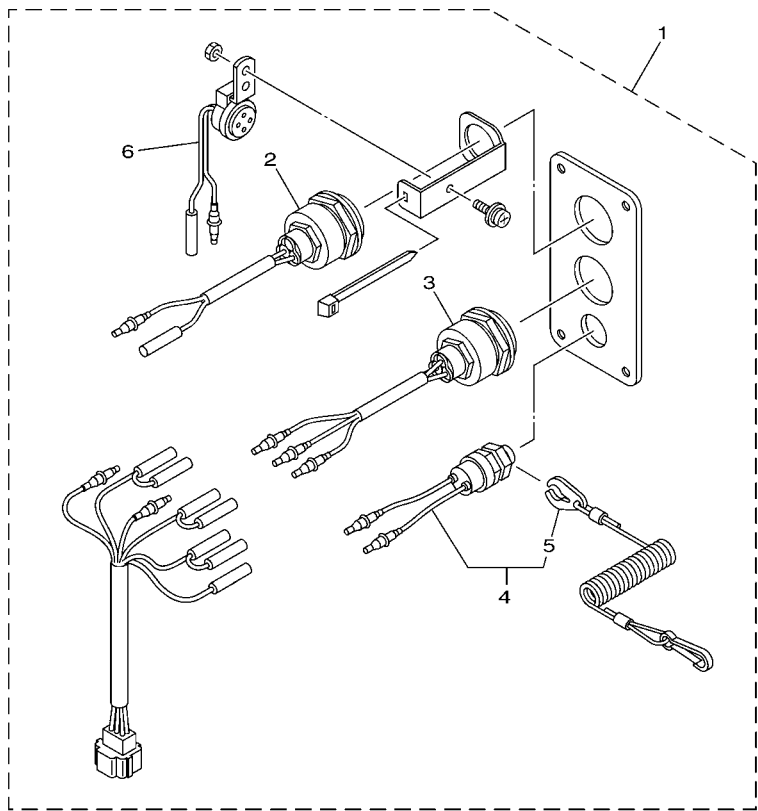
REF. NO.	PART NO.	DESCRIPTION	6X61		REMARKS
1	6X6-85590-00	CONTROL UNIT ASSY	1		SINGLE, 2 STATION
	6X6-85590-00	CONTROL UNIT ASSY	2		TWIN, 2 STATION
2	6X6-82590-20	WIRE HARNESS ASSY	1		SINGLE, 2 STATION
	6X6-82590-30	WIRE HARNESS ASSY	1		TWIN, 2 STATION
3	703-82591-00	BAND	4		SINGLE, 2 STATION
	703-82591-00	BAND	8		TWIN, 2 STATION
4	6X6-48176-10	GROMMET	1		TWIN, 2 STATION

FIG. 8 SWITCH & PANEL 1 (SINGLE)



REF. NO.	PART NO.	DESCRIPTION	6X61				REMARKS
1	6R5-82570-05	PANEL SWITCH ASSY	1				1 & 2 STATION MAIN
2	704-82571-02	.PANEL, SWITCH	1				
3	6R5-82588-01	..PLATE	1				
4	6R5-82510-02	.MAIN SWITCH ASSY	1				
5	676-82577-00	..CAP, KEY	1				
6	688-82575-01	..ENGINE STOP SWITCH ASSY	1				
7	682-82556-00	..LANYARD, STOP SWITCH	1				
8	64D-82581-00	.STAY, CORD CLAMP	1				
9	97303-05012	.BOLT	1				
10	92903-05100	.WASHER, SPRING	1				
11	95303-05700	.NUT	1				
12	6R5-83383-00	.BUZZER	1				

 6X61100-G080

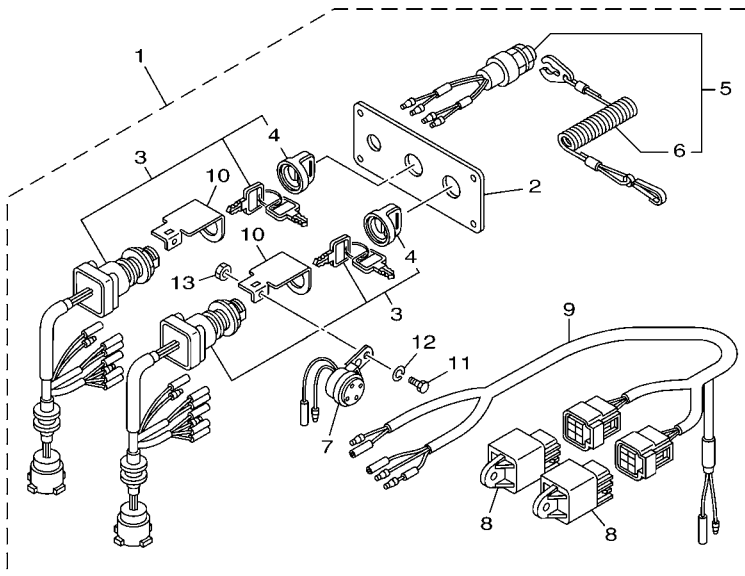



 6X61100-G090

FIG. 9 SWITCH & PANEL 2 (SINGLE)

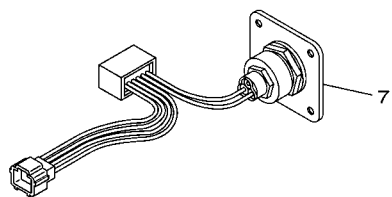
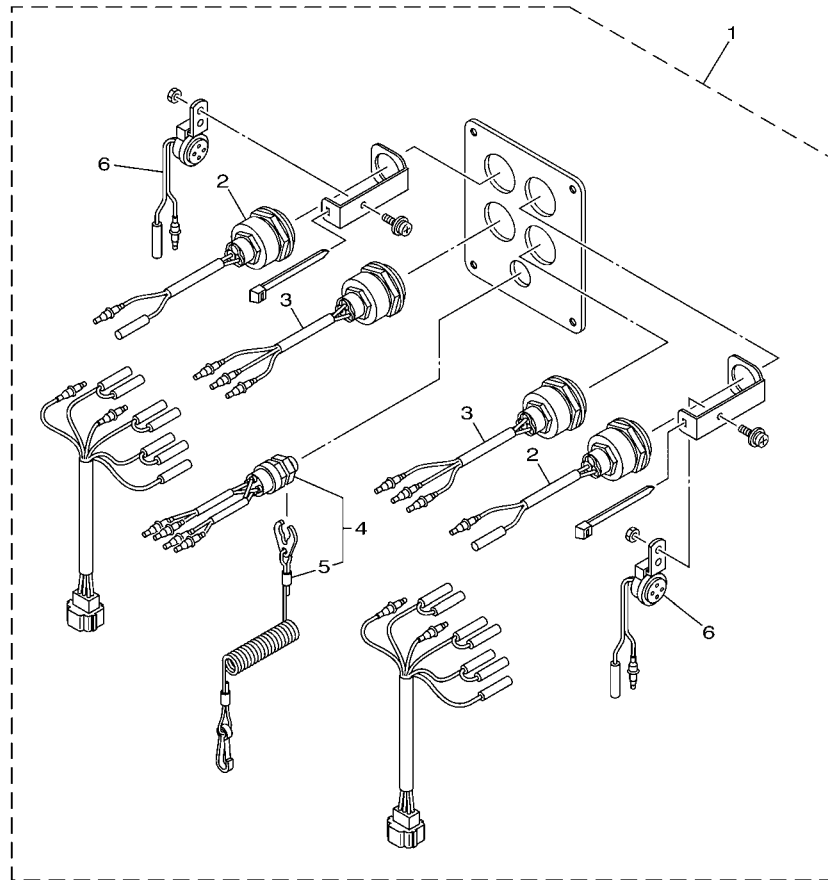
REF. NO.	PART NO.	DESCRIPTION	6X61		REMARKS
1	6X6-82570-00	PANEL SWITCH ASSY (SINGLE)	1		2 STATION SUB
2	6X1-81870-00	.STARTING SWITCH ASSY	1		
3	6X1-82550-00	.ENGINE STOP SWITCH ASSY	1		
4	688-82575-01	.ENGINE STOP SWITCH ASSY	1		
5	682-82556-00	..LANYARD, STOP SWITCH	1		
6	6R5-83383-00	.BUZZER	1		
7	6X6-82570-A0	PANEL SWITCH ASSY	2		2 STATION SUB

FIG. 10 SWITCH & PANEL 3 (TWIN)



REF. NO.	PART NO.	DESCRIPTION	6X61				REMARKS
1	6Y8-82570-02	PANEL SW., TWIN	1				1 & 2 STATION MAIN
2	6Y8-82571-01	.PLATE, PANEL SWITCH	1				
3	6Y8-82510-02	.MAIN SWITCH ASSY	2				
4	676-82577-00	..CAP, KEY	1				
5	6K1-82575-00	.ENGINE STOP SWITCH ASSY	1				
6	682-82556-00	..LANYARD, STOP SWITCH	1				
7	6R5-83383-00	.BUZZER	2				
8	68V-81950-00	.RELAY ASSY	2				
9	6Y8-82507-00	.LEAD, IGNITION SWITCH RELAY	1				
10	64D-82581-00	.STAY, CORD CLAMP	2				
11	97303-05012	.BOLT	2				
12	92903-05100	.WASHER, SPRING	2				
13	95303-05700	.NUT	2				

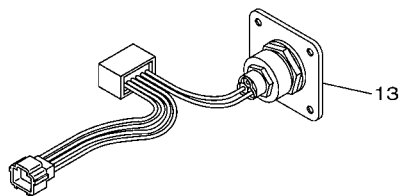
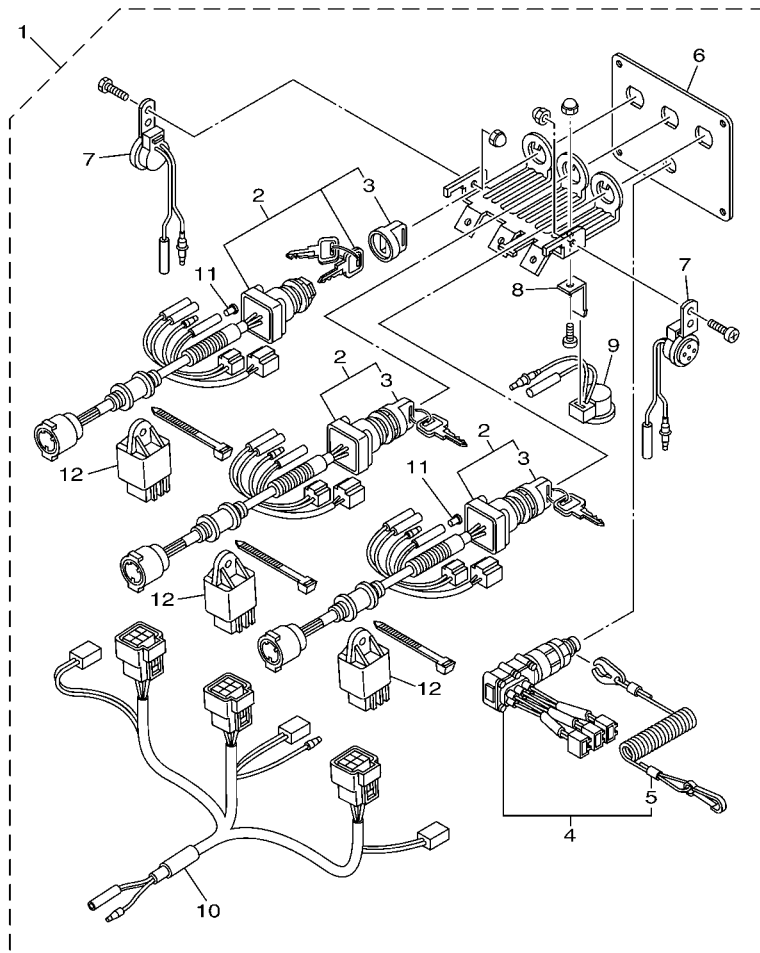
 6X61100-G100




 6X61100-G110

FIG. 11 SWITCH & PANEL 4 (TWIN)

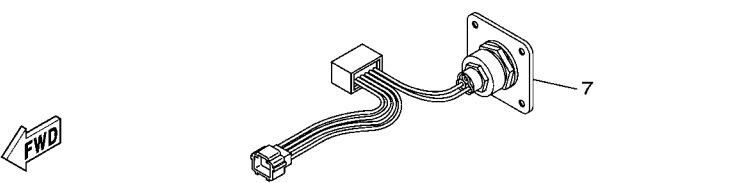
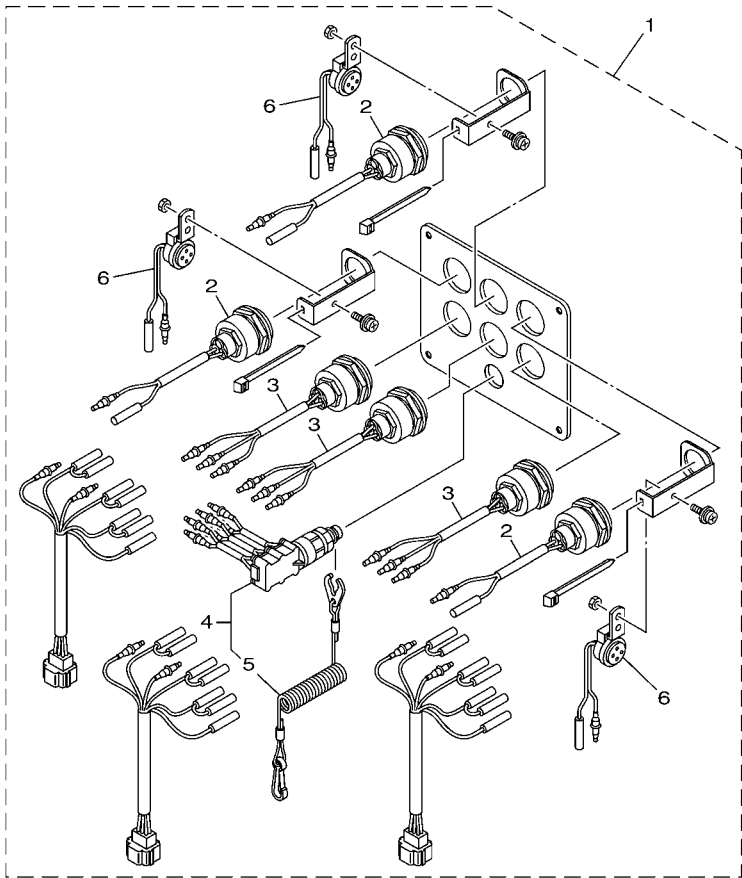
REF. NO.	PART NO.	DESCRIPTION	6X61		REMARKS
1	6X6-82570-10	PANEL SWITCH ASSY (TWIN)	1		2 STATION SUB
2	6X1-81870-00	.STARTING SWITCH ASSY	2		
3	6X1-82550-00	.ENGINE STOP SWITCH ASSY	2		
4	6K1-82575-00	.ENGINE STOP SWITCH ASSY	1		
5	682-82556-00	..LANYARD, STOP SWITCH	1		
6	6R5-83383-00	.BUZZER	2		
7	6X6-82570-A0	PANEL SWITCH ASSY	2		2 STATION SUB




 6X61100-G120

FIG. 12 SWITCH & PANEL 5 (TRIPLE)

REF. NO.	PART NO.	DESCRIPTION	6X61				REMARKS
1	6X5-82570-01	PANEL SWITCH ASSY	1				2 STATION MAIN
2	6X5-82510-01	.MAIN SWITCH ASSY	3				
3	676-82577-00	..CAP, KEY	1				
4	6X5-82575-00	.ENGINE STOP SWITCH ASSY	1				
5	682-82556-00	..LANYARD, STOP SWITCH	1				
6	6X5-82571-00	.PANEL, SWITCH	1				
7	6X5-83383-00	.BUZZER	2				
8	6X5-82581-00	.STAY, CORD CLAMP	1				
9	6X4-83383-00	.BUZZER	1				
10	6X5-82507-00	.WIRE, LEAD	1				
11	703-82119-00	.COVER, LEAD WIRE	5				
12	68V-81950-00	.RELAY ASSY	3				
13	6X6-82570-A0	PANEL SWITCH ASSY	1				2 STATION MAIN

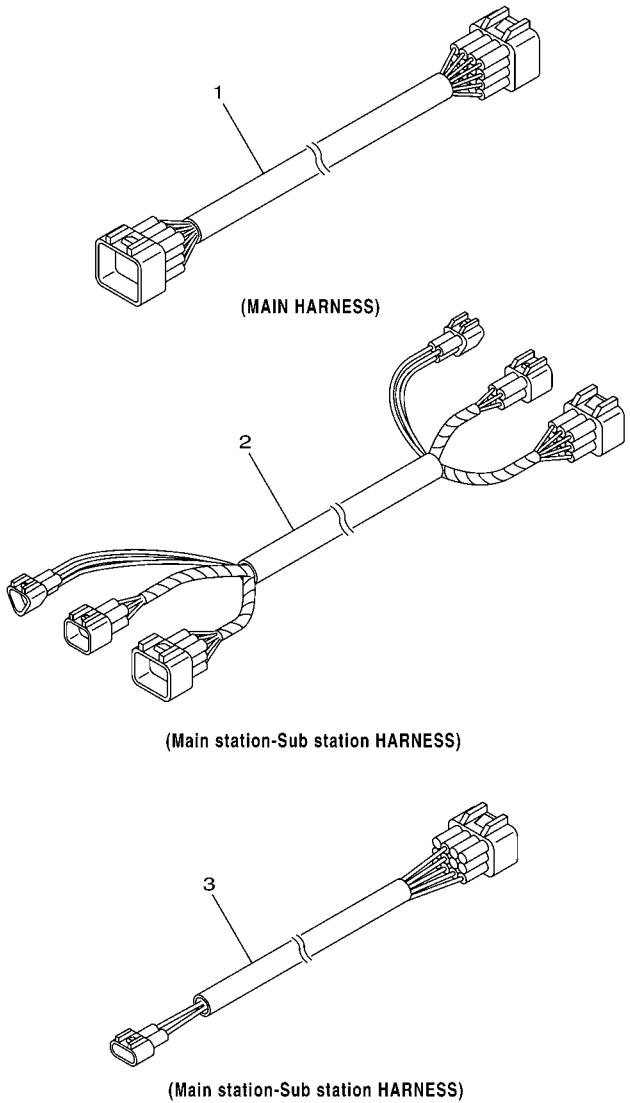




 6X61100-G130

FIG. 13 SWITCH & PANEL 6 (TRIPLE)

REF. NO.	PART NO.	DESCRIPTION	6X61			REMARKS
1	6X6-82570-20	PANEL SWITCH ASSY	1			2 STATION SUB
2	6X1-81870-00	.STARTING SWITCH ASSY	3			
3	6X1-82550-00	.ENGINE STOP SWITCH ASSY	3			
4	6X6-82575-00	.ENGINE STOP SWITCH ASSY	1			
5	682-82556-00	..LANYARD, STOP SWITCH	1			
6	6R5-83383-00	.BUZZER	3			
7	6X6-82570-A0	PANEL SWITCH ASSY	2			2 STATION SUB



6X61100-G140

FIG. 14 ELECTRICAL WIRE HARNESS

REF. NO.	PART NO.	DESCRIPTION	6X61				REMARKS
1	6X6-8258A-00	EXTENSION, WIRE HARNESS (6.1M)	1				UR
	6X6-8258A-10	EXTENSION, WIRE HARNESS (7M)	1				UR
	6X6-8258A-20	EXTENSION, WIRE HARNESS (8M)	1				UR
	6X6-8258A-30	EXTENSION, WIRE HARNESS (10M)	1				UR
	6X6-8258A-40	EXTENSION, WIRE HARNESS (12M)	1				UR
2	6X6-8258A-A0	EXTENSION, WIRE HARNESS (5M)	1				UR 2 STATION
	6X6-8258A-C0	EXTENSION, WIRE HARNESS (8M)	1				UR 2 STATION
	6X6-8258A-E0	EXTENSION, WIRE HARNESS (12.2M)	1				UR 2 STATION
3	6X6-8258A-B0	EXTENSION, WIRE HARNESS (5M)	1				UR 2 STATION
	6X6-8258A-D0	EXTENSION, WIRE HARNESS (8M)	1				UR 2 STATION
	6X6-8258A-F0	EXTENSION, WIRE HARNESS (12.2M)	1				UR 2 STATION

NUMERICAL INDEX

PART NO.	REF. NO.	PART NO.	REF. NO.	PART NO.	REF. NO.	PART NO.	REF. NO.	PART NO.	REF. NO.	PART NO.	REF. NO.
6X6-44191-00	4 - 61	6X6-48175-10	5 - 68	6X6-48215-00	4 - 15	6X6-48241-00	6 - 62	6X6-82540-10	6 - 75	688-82575-01	9 - 4
	5 - 67	6X6-48176-00	4 - 20	6X6-48215-10	5 - 17	6X6-48242-01	4 - 28	6X6-82545-00	4 - 58	676-82577-00	8 - 5
	6 - 67	6X6-48176-10	5 - 23	6X6-48215-20	6 - 17		5 - 32		5 - 64		10 - 4
6X6-48118-00	4 - 36		6 - 23	6X6-48216-00	4 - 22		6 - 32		6 - 64		12 - 3
	5 - 41		7 - 4	6X6-48216-10	5 - 25	6X6-48242-11	5 - 33	6X1-82550-00	9 - 3	64D-82581-00	8 - 8
	6 - 41	6X6-48176-50	4 - 63	6X6-48216-20	6 - 25		6 - 33		11 - 3		10 - 10
6X6-48119-00	4 - 12		5 - 69	6X6-48219-00	4 - 17	6X6-48245-01	4 - 57		13 - 3	6X5-82581-00	12 - 8
6X6-48119-10	5 - 13		6 - 68	6X6-48219-10	5 - 19		5 - 63	682-82556-00	8 - 7	6X6-82581-00	6 - 84
	6 - 13	6X6-48176-60	4 - 64		6 - 19		6 - 63		9 - 5	6X6-82584-00	6 - 83
6X6-48127-00	4 - 65		5 - 70	6X6-48219-20	5 - 20	6X6-48264-00	4 - 40		10 - 6	6R5-82588-01	8 - 3
	5 - 71		6 - 69		6 - 20		5 - 45		11 - 5	6X6-8258A-10	14 - 1
	6 - 70	6X6-48189-00	4 - 33	6X6-48221-00	4 - 3		6 - 45		12 - 5	6X6-8258A-20	14 - 1
EL8-48127-00	4 - 11		5 - 38		5 - 3	6X6-48267-00	4 - 38		13 - 5	6X6-8258A-30	14 - 1
	5 - 12		6 - 38		6 - 3		5 - 43	6X6-82563-00	4 - 2	6X6-8258A-40	14 - 1
	6 - 12	6X6-48193-00	4 - 35	6X6-48222-00	4 - 4		6 - 43		5 - 2	6X6-8258A-A0	14 - 2
6X0-48128-00	6 - 85		5 - 40		5 - 4	704-48283-00	5 - 49		6 - 2	6X6-8258A-B0	14 - 3
6X6-48128-00	4 - 66		6 - 40		6 - 4		6 - 49	6X6-82563-10	5 - 26	6X6-8258A-C0	14 - 2
	5 - 72	703-48198-00	4 - 34	6X6-48222-10	5 - 6	704-48287-00	4 - 41		6 - 26	6X6-8258A-D0	14 - 3
	6 - 71		5 - 39		6 - 6		5 - 46	6X6-82563-20	5 - 75	6X6-82590-00	4 - 52
6X6-48129-00	4 - 54		6 - 39	6X6-48224-00	4 - 5		6 - 46		6 - 74	6X6-82590-10	5 - 59
	5 - 60	6X6-481A0-01	4 - 25		5 - 5	6X6-81145-00	4 - 42		6 - 76	6X6-82590-20	4 - 52
	6 - 60		5 - 29		6 - 5		5 - 74	6X6-82570-00	1 - 3		7 - 2
6X6-48144-00	4 - 53	6X6-481A0-11	6 - 29	6X6-48224-10	4 - 6		6 - 73		9 - 1	6X6-82590-30	5 - 59
6X6-48144-10	4 - 27	6X6-481A0-21	5 - 77		5 - 7	6X6-81146-00	4 - 67	6X5-82570-01	3 - 2		7 - 2
	5 - 31	6X6-481A0-31	6 - 78		6 - 7		5 - 73		12 - 1	6X6-82590-50	4 - 52
	6 - 31	6X6-48205-00	1 - 1	6X6-48225-00	4 - 21		6 - 72	6Y8-82570-02	2 - 2	6X6-82590-60	5 - 59
704-48156-00	5 - 48		4 - 1		5 - 24	6X1-81870-00	9 - 2		10 - 1	6X6-82590-80	6 - 59
	6 - 48	6X6-48205-10	1 - 1		6 - 24		11 - 2	6R5-82570-05	1 - 2	6X6-82590-90	6 - 59
6X6-48158-00	4 - 39		4 - 1	6X6-48228-00	4 - 45		13 - 2		8 - 1	6X6-82591-00	6 - 81
	5 - 44	6X6-48205-20	1 - 1		5 - 52	68V-81950-00	10 - 8	6X6-82570-10	2 - 3	703-82591-00	4 - 48
	6 - 44		4 - 1		6 - 52		12 - 12		11 - 1		4 - 48
6X6-48167-00	4 - 14	6X6-48207-00	2 - 1	6X6-48233-00	4 - 29	704-81950-10	4 - 60	6X6-82570-20	3 - 3		5 - 55
6X6-48167-10	5 - 15		5 - 1		5 - 34		5 - 66		13 - 1		5 - 55
	6 - 15	6X6-48207-10	2 - 1		6 - 34		6 - 66	6X6-82570-A0	1 - 4		6 - 55
6X6-48167-20	5 - 16		5 - 1	6X6-48234-00	4 - 37	703-82119-00	12 - 11		2 - 4		7 - 3
	6 - 16	6X6-48207-20	2 - 1		5 - 42	6X5-82507-00	12 - 10		3 - 4		7 - 3
6X6-48167-50	4 - 16		5 - 1		6 - 42	6Y8-82507-00	10 - 9		9 - 7	6X6-8259E-00	4 - 18
6X6-48167-60	5 - 18	6X6-48208-20	3 - 1	6X6-48236-00	4 - 32	6X5-82510-01	12 - 2		11 - 7		5 - 21
	6 - 18		6 - 1		5 - 37	6R5-82510-02	8 - 4		12 - 13		6 - 21
6X6-48171-00	4 - 9	6X6-48208-30	3 - 1		6 - 37	6Y8-82510-02	10 - 3		13 - 7	6X6-8259F-00	6 - 77
	5 - 10		6 - 1	6X6-48237-00	4 - 31	6X6-8252S-00	6 - 82	6X5-82571-00	12 - 6	6R5-83383-00	8 - 12
	6 - 10	6X6-48211-10	6 - 86		5 - 36	6X6-8252V-00	4 - 59		10 - 2		9 - 6
6X6-48175-00	4 - 47	6X6-48212-00	4 - 26		6 - 36		5 - 65	704-82571-02	8 - 2		10 - 7
	4 - 47		5 - 30	6X6-48238-00	4 - 30		6 - 65	6K1-82575-00	10 - 5		11 - 6
	5 - 54		6 - 30		5 - 35	6X6-82540-00	4 - 55		11 - 4		13 - 6
	5 - 54	6X6-48213-00	4 - 44		6 - 35		5 - 61	6X5-82575-00	12 - 4	6X4-83383-00	12 - 9
	6 - 54		5 - 51	6X6-48241-00	4 - 56		6 - 61	6X6-82575-00	13 - 4	6X5-83383-00	12 - 7
6X6-48175-10	4 - 62		6 - 51		5 - 62	6X6-82540-10	5 - 76	688-82575-01	8 - 6	6X6-84301-00	4 - 13

NUMERICAL INDEX

PART NO.	REF. NO.	PART NO.	REF. NO.	PART NO.	REF. NO.	PART NO.	REF. NO.	PART NO.	REF. NO.	PART NO.	REF. NO.
6X6-84301-10	5 - 14	98780-05014	6 - 50								
6X6-84301-20	6 - 14										
6X6-85557-00	6 - 80										
6X6-85590-00	4 - 46										
	5 - 53										
	6 - 53										
	7 - 1										
	7 - 1										
6X6-85590-10	4 - 46										
	5 - 53										
92903-05100	8 - 10										
	10 - 12										
92990-05200	4 - 19										
	5 - 22										
	6 - 22										
92990-05300	4 - 8										
	5 - 9										
	6 - 9										
92990-08600	4 - 10										
	5 - 11										
	6 - 11										
92D80-05016	4 - 24										
	5 - 28										
	6 - 28										
95303-05700	8 - 11										
	10 - 13										
95380-05600	4 - 51										
	5 - 58										
	6 - 58										
97303-05012	8 - 9										
	10 - 11										
97780-50145	4 - 49										
	5 - 56										
	6 - 56										
98580-04010	4 - 23										
	5 - 27										
	6 - 27										
98580-05014	4 - 7										
	5 - 8										
	6 - 8										
98580-05025	5 - 47										
	6 - 47										
98580-05060	4 - 50										
	5 - 57										
	6 - 57										
98780-05010	6 - 79										
98780-05014	4 - 43										
	5 - 50										